

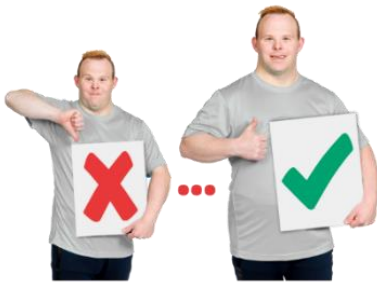


Autism Strategy 2023 - 2026

 <p data-bbox="319 705 742 772">NHS London Ambulance Service NHS Trust</p>  	<p>The London Ambulance service has written a plan to support autistic people</p>
	<p>This strategy will cover the next 3 years</p>
	<p>The strategy has 5 areas of work</p>



1. We will engage more with autistic people



The Public Patient council group will look at all education and training materials on autism

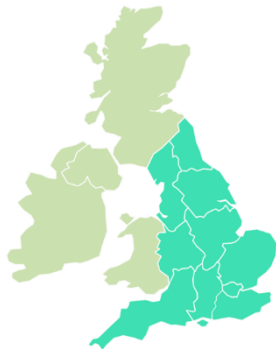
Public Patient Council



We will make sure there is an equal number of autistic people and people with a learning disability in the Public Patient Council



2. We will learn from the deaths of autistic people



We will do this by following national guidance

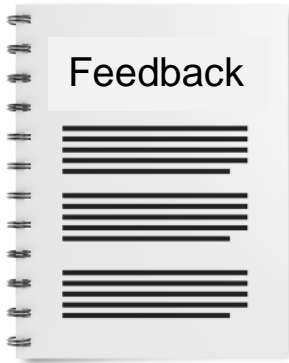
And



By reviewing the deaths of autistic people that we have cared for



3. Provide training on autism to Staff



We will also provide feedback to staff about autism from incidents or things going wrong



4. We will make our pathways that support autistic people are working and reviewed at least once every 2 years



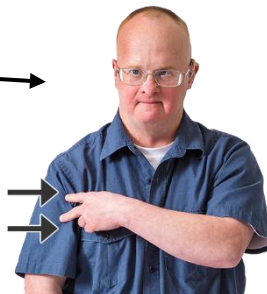
We will do this by checking Universal Care Plans and recommending that autistic people have them if they need.



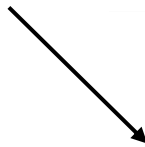
We will make sure our Advanced Paramedic Practitioners in Urgent Care are reducing hospital admissions for autistic patients where appropriate



5. We will look into the best way to support autistic people with mental health difficulties



Staff



We have made this plan by listening to our patients, staff and the public

This is to make sure the plan meets the needs of our autistic patients



Please email

safeguarding.las@nhs.net

if you have any questions about this strategy



Post Office

You can also send a letter to

London Ambulance Service NHS
Trust
Headquarters
220 Waterloo Road
London. SE1 8SD