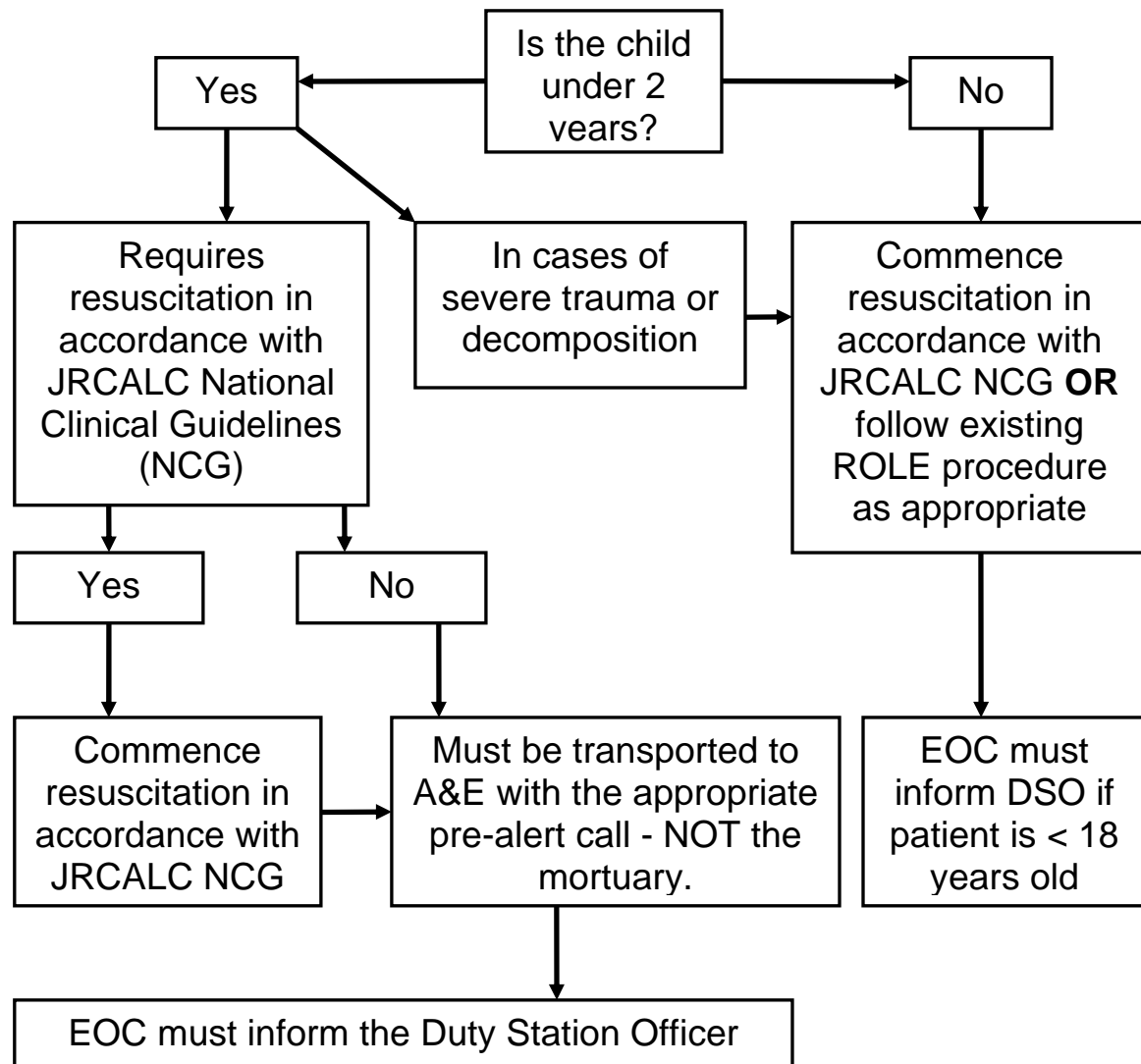




## Management of Sudden Unexplained Death in Infants, Children & Adolescents (SUDICA)



NB/ Clinical Support Desk available for advice and support

In all cases crews must:-

- Complete a PRF
- Complete form LA3 –(Recognition of Life Extinct) where appropriate
- Complete LA279
- Document the shoulder number of the lead Metropolitan Police officer on the PRF
- Support parents and keep them informed of actions