



Information pack for Trust Board

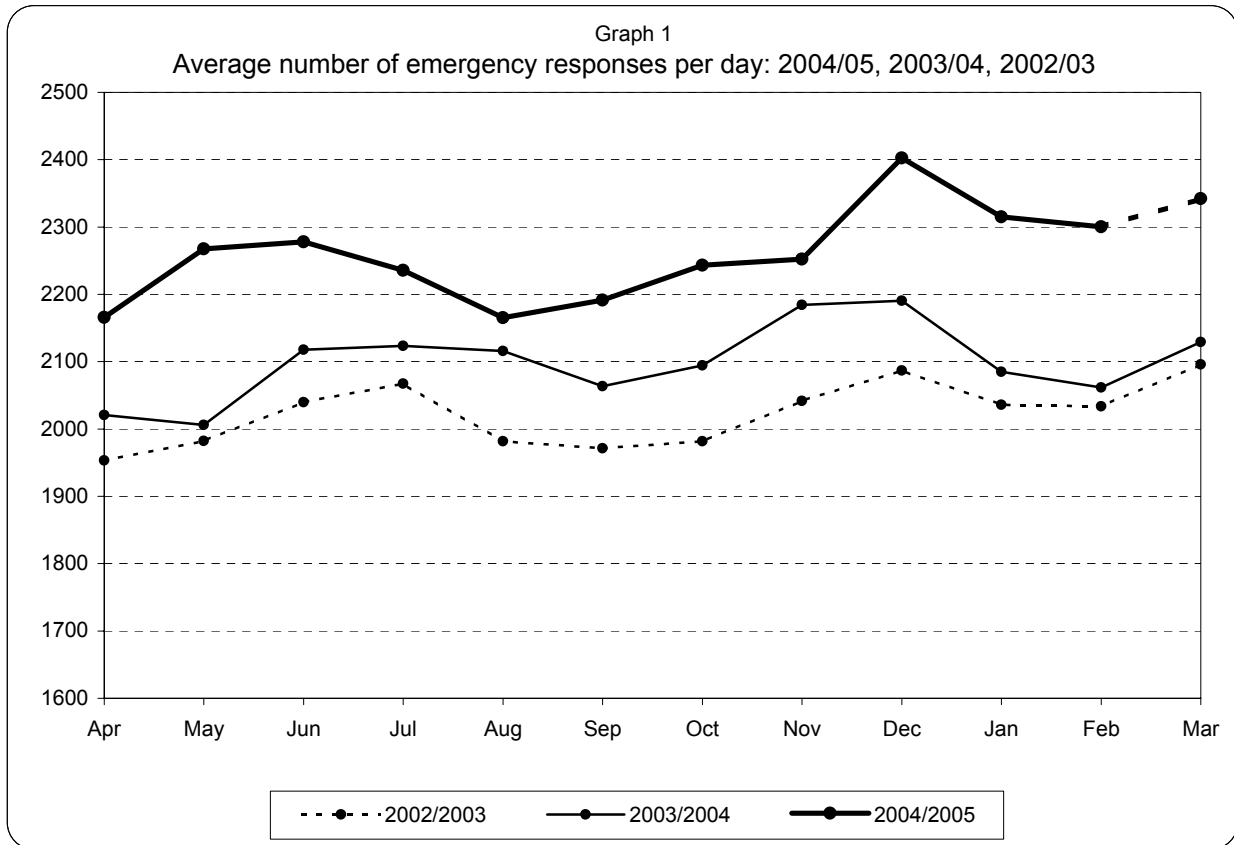
March 2005

(data to February 2005)

Note: PRF data entry up to 16th February only

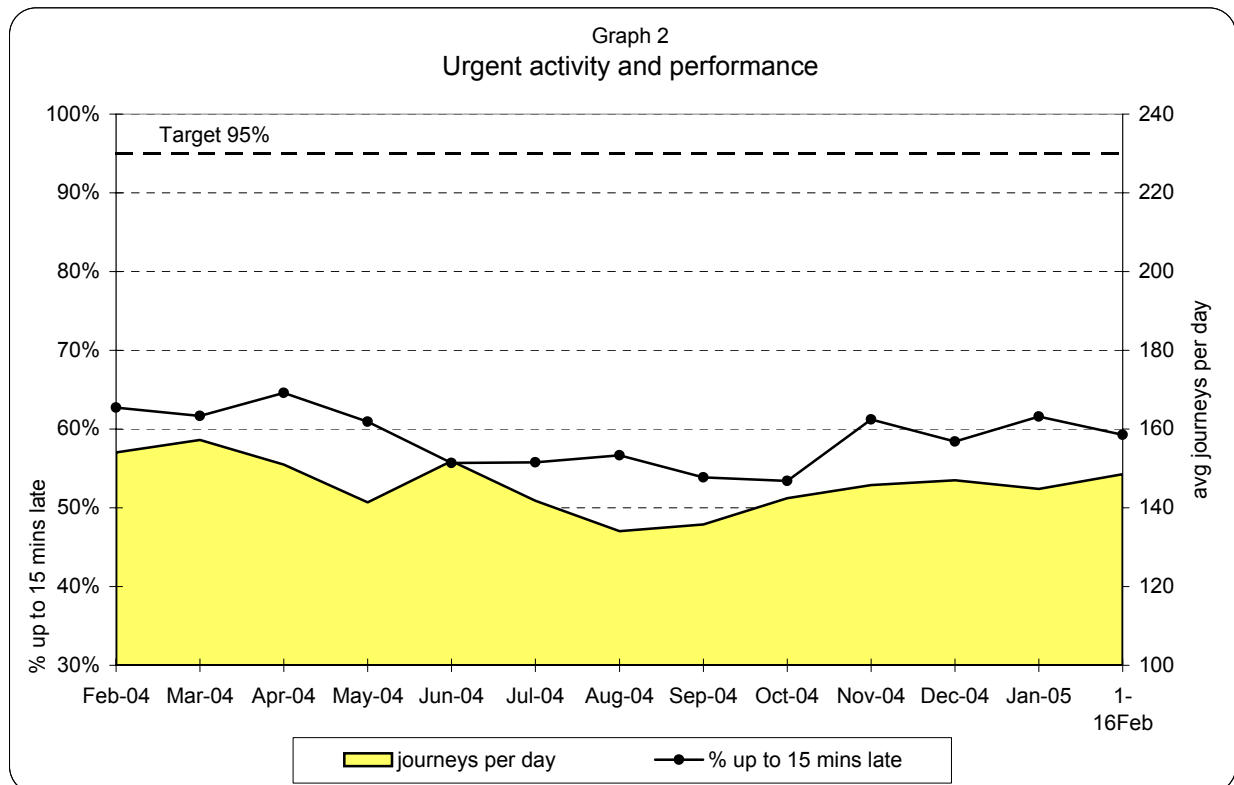
Helena Fogel
Management Information
Date: March 17, 2005

**London Ambulance Service NHS Trust
Accident and Emergency Service
Emergency activity and Urgent activity and performance**



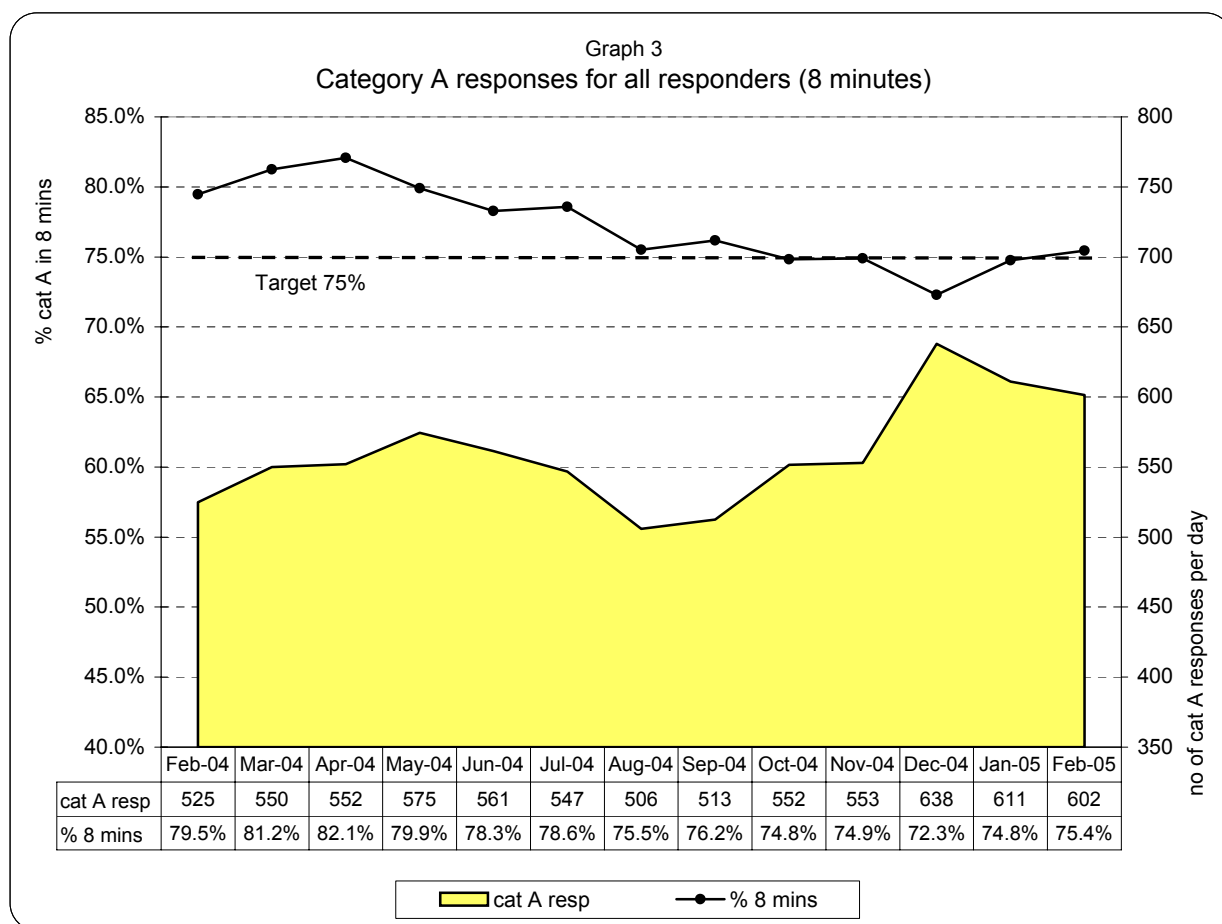
Emergency responses: monthly and year to date comparison

Feb 05 v Feb 04	Apr04-Feb05 v Apr03-Feb04
+11.6%	+7.6%



Note: Urgent performance measures the arrival at hospital time against requested arrival time (target=95% of patients to arrive no more than 15 mins after time requested)

**London Ambulance Service NHS Trust
Accident and Emergency Service
Emergency responses: 8 minute response activity and performance**

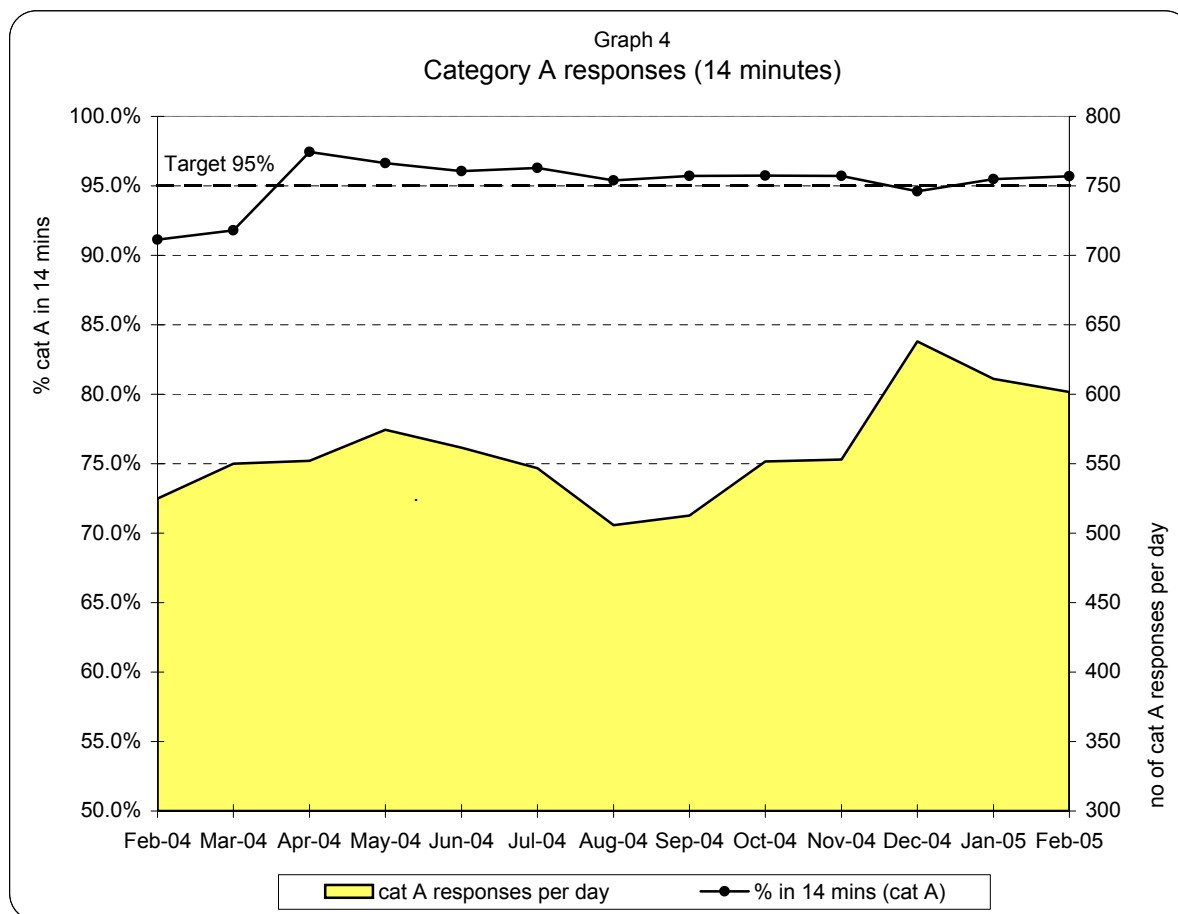


Note: performance for Feb 05 is estimated to take into account the uplift which occurs after including PRF times

**Table 1
8 minute response by Strategic Health Authority (cat A, for all responders)**

	North West London	North Central London	North East London	South East London	South West London	Total LAS
Apr-04	83%	83%	77%	86%	82%	82%
May-04	81%	80%	75%	84%	81%	80%
Jun-04	80%	80%	72%	81%	79%	78%
Jul-04	79%	81%	72%	82%	80%	79%
Aug-04	76%	79%	68%	79%	77%	76%
Sep-04	77%	77%	71%	81%	76%	76%
Oct-04	76%	76%	67%	78%	78%	75%
Nov-04	76%	77%	67%	80%	77%	75%
Dec-04	74%	74%	66%	75%	72%	72%
Jan-05	74%	78%	70%	78%	75%	75%
Feb-05	73%	76%	76%	77%	77%	75%
YTD	77%	78%	71%	80%	78%	77%

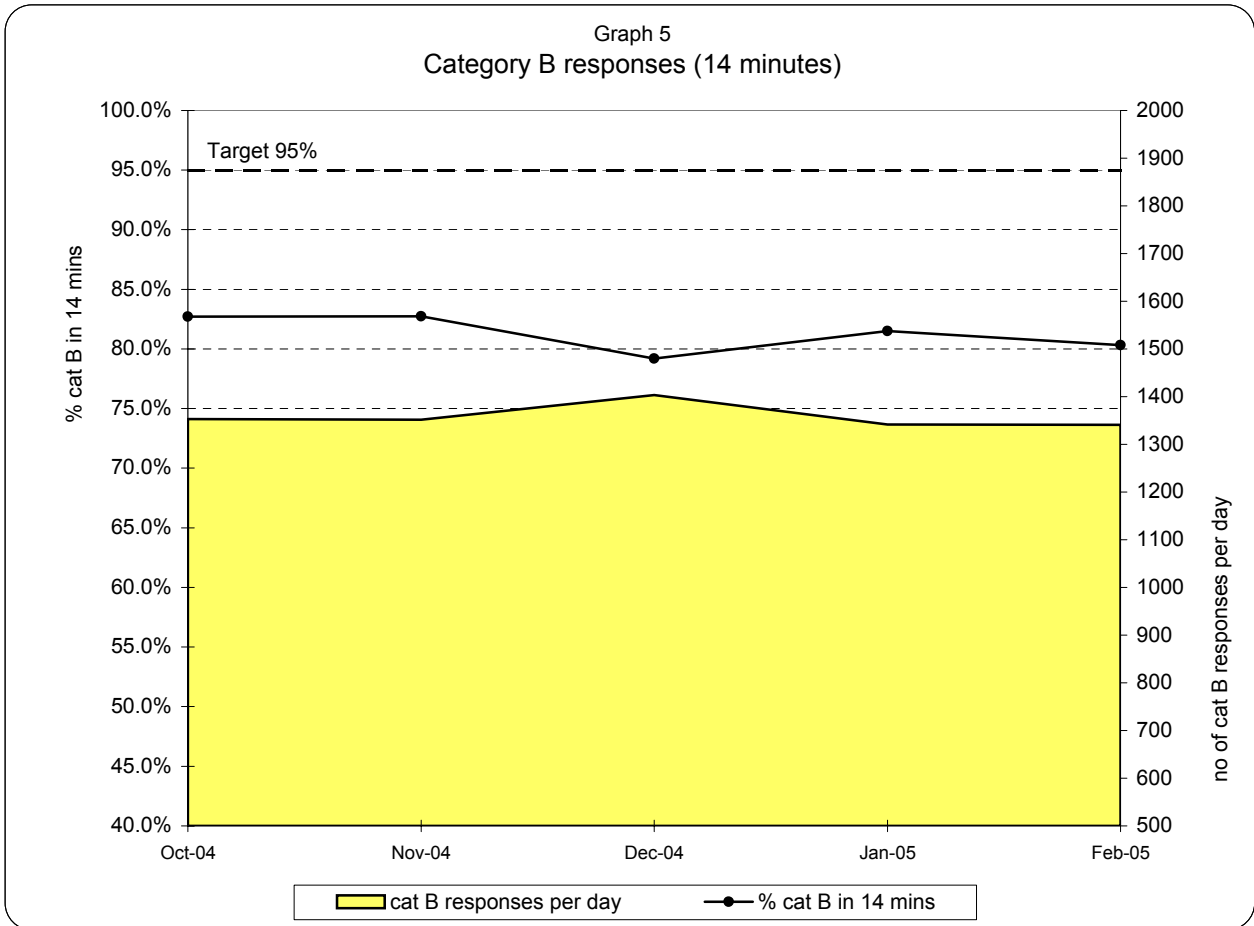
**London Ambulance Service NHS Trust
Accident and Emergency Service
Emergency responses: 14 minute response activity and performance (cat A)**



**Table 2
14 minute response by Strategic Health Authority (category A)**

	North West London	North Central London	North East London	South East London	South West London	Total LAS
Apr-04	98%	98%	95%	98%	98%	97%
May-04	97%	97%	94%	98%	97%	97%
Jun-04	97%	96%	93%	98%	97%	96%
Jul-04	97%	97%	94%	98%	97%	96%
Aug-04	97%	96%	92%	97%	96%	95%
Sep-04	97%	96%	93%	97%	97%	96%
Oct-04	97%	96%	92%	97%	97%	96%
Nov-04	97%	96%	93%	96%	97%	96%
Dec-04	96%	95%	92%	96%	95%	95%
Jan-05	96%	96%	94%	97%	96%	95%
Feb-05	95%	95%	95%	97%	97%	96%
YTD	97%	96%	93%	97%	97%	96%

**London Ambulance Service NHS Trust
Accident and Emergency Service
Emergency responses: 14 minute response activity and performance (cat B)**

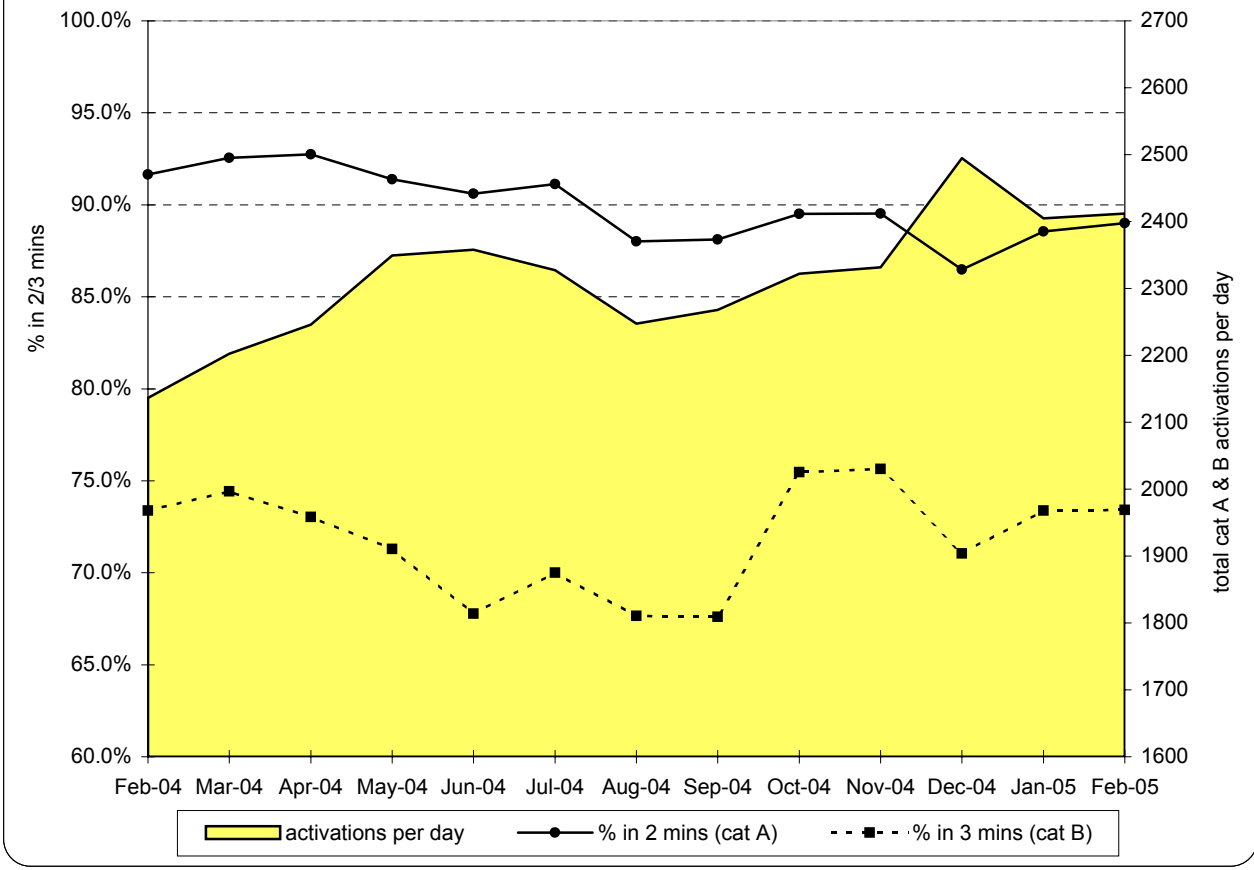


Notes:

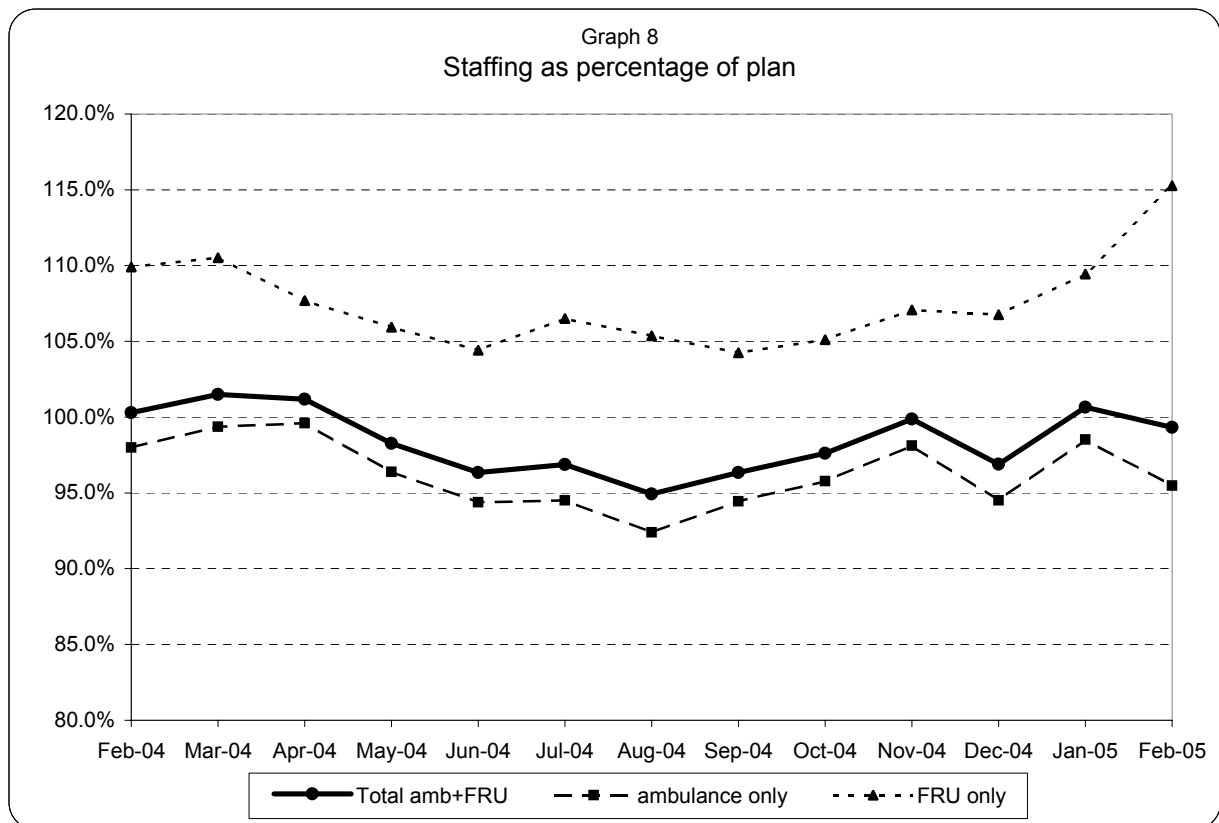
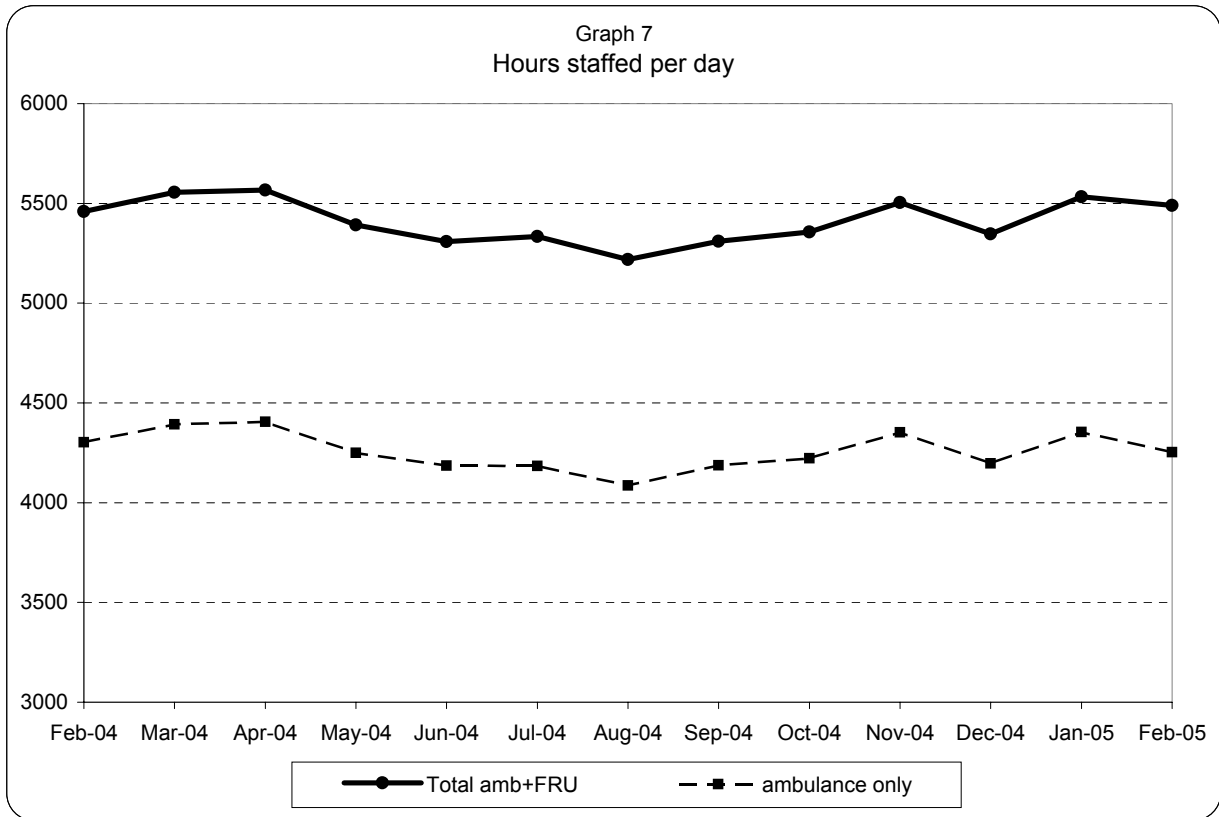
Prior to October 2004, cat B included what are now classified as cat C

**London Ambulance Service NHS Trust
Accident and Emergency Service
Emergency activations: activity and performance**

Graph 6
Category A and B activations



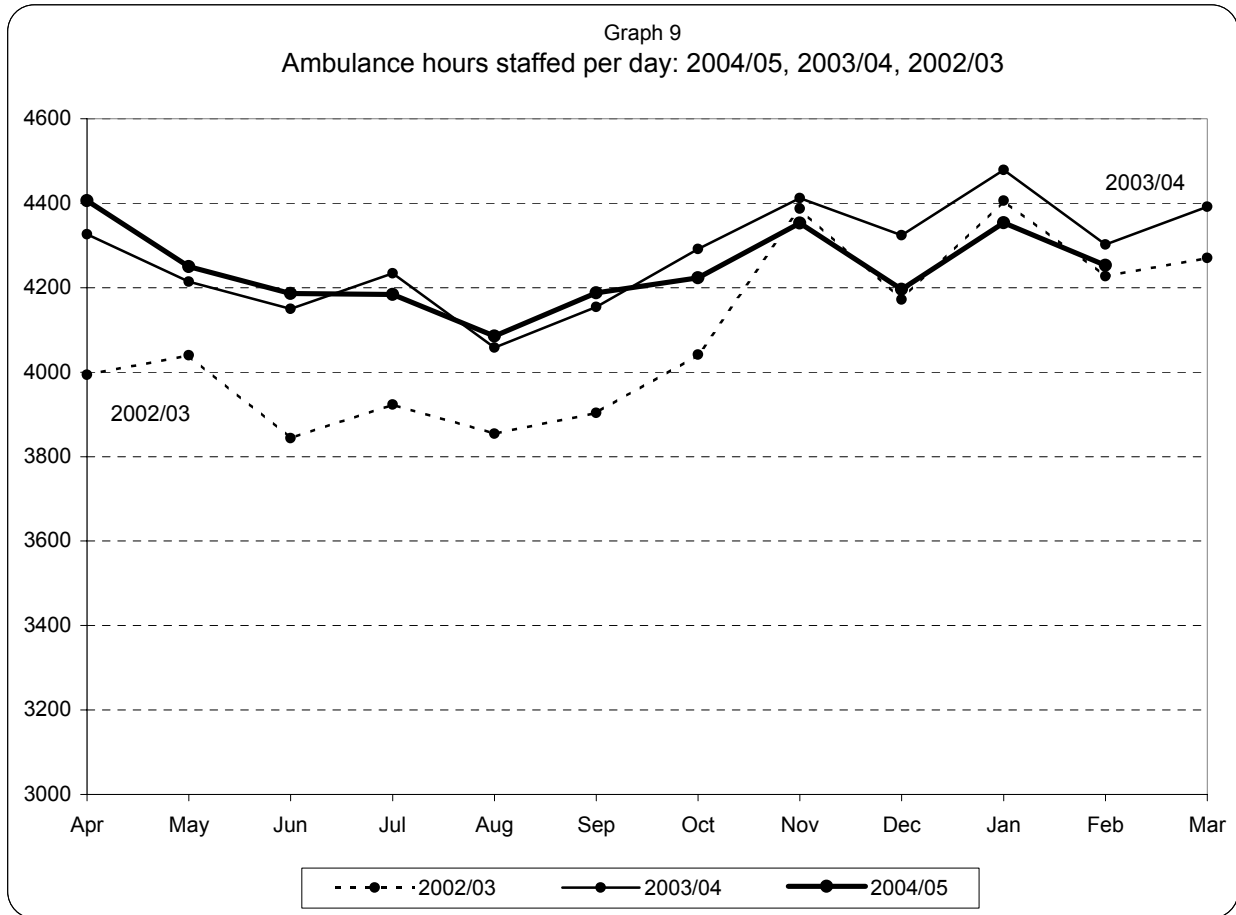
**London Ambulance Service NHS Trust
Accident and Emergency Service
Ambulance and FRU staffing**



Note:

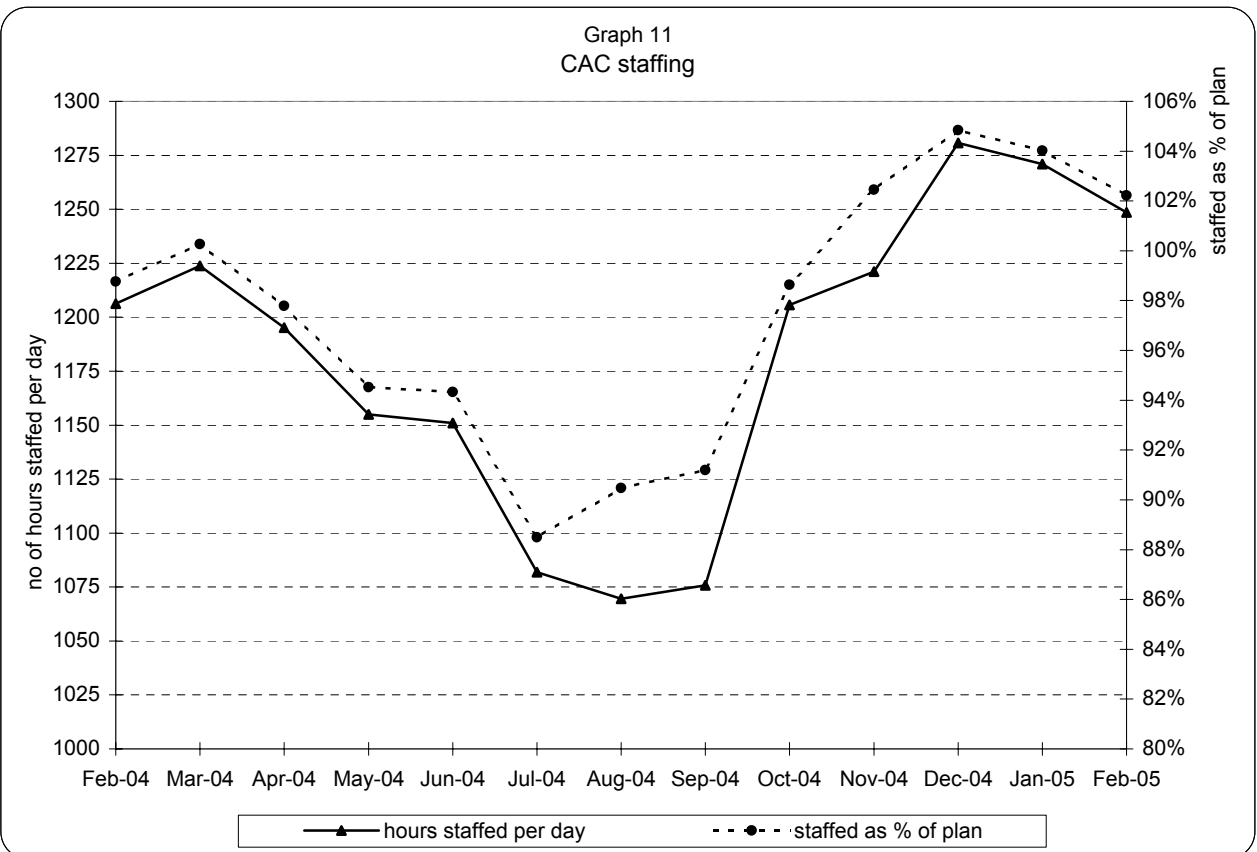
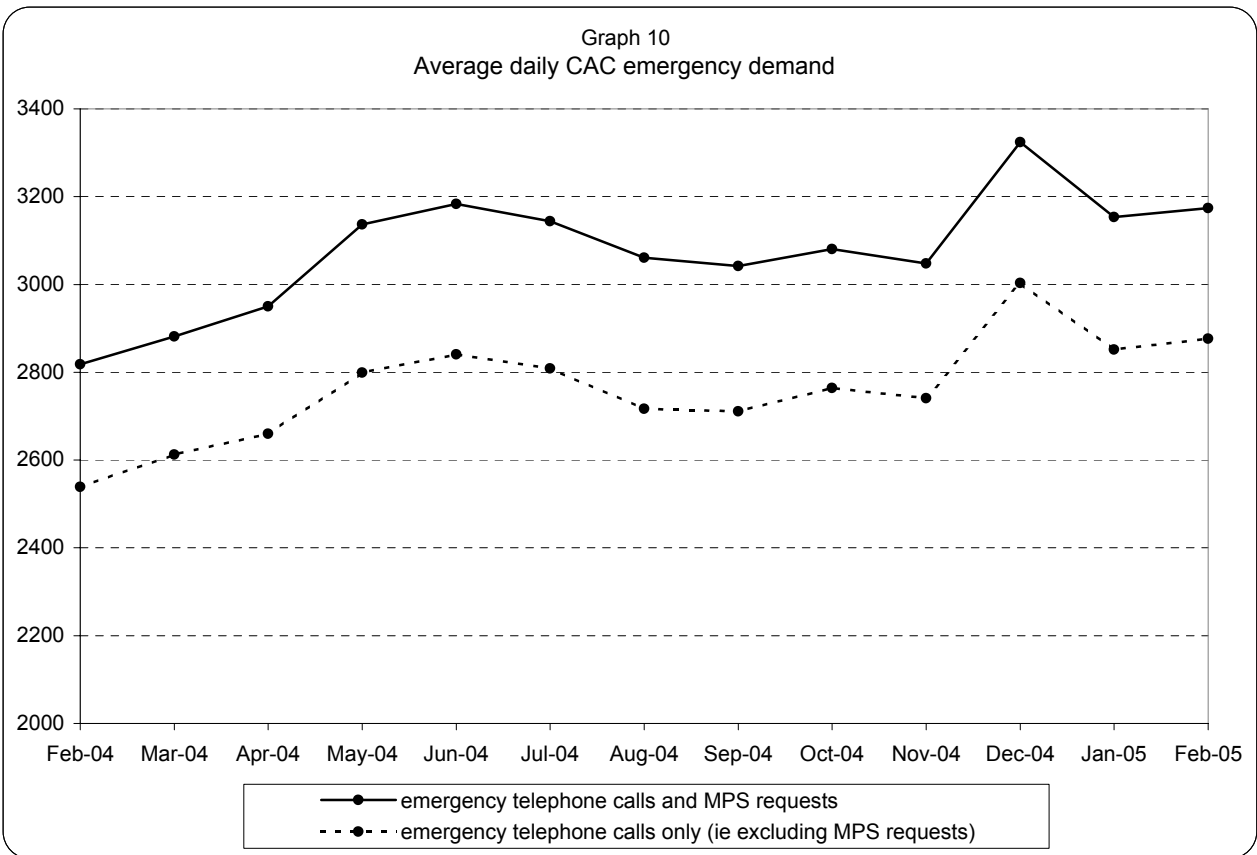
1) staffed = plan + additional - unmanned - single

**London Ambulance Service NHS Trust
Accident and Emergency Service
Yearly comparison of ambulance staffing**

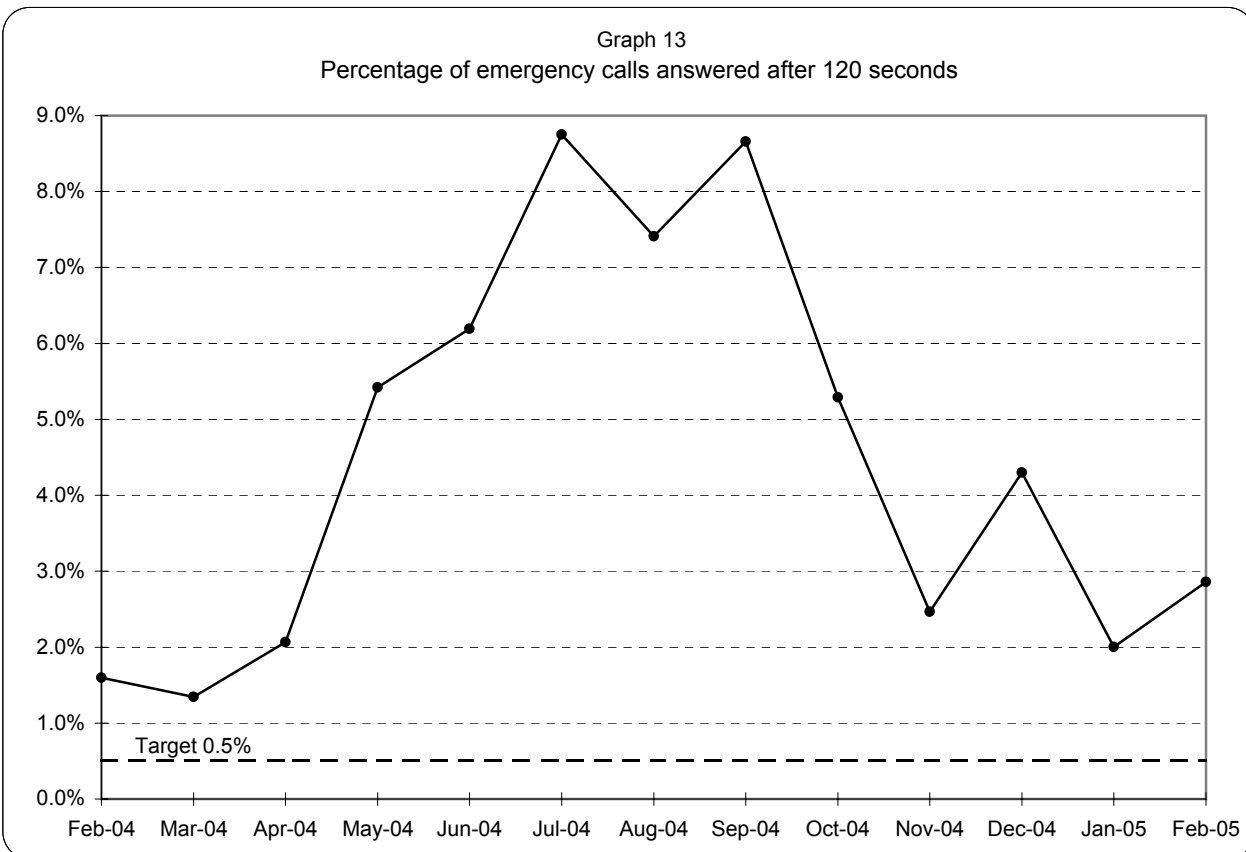
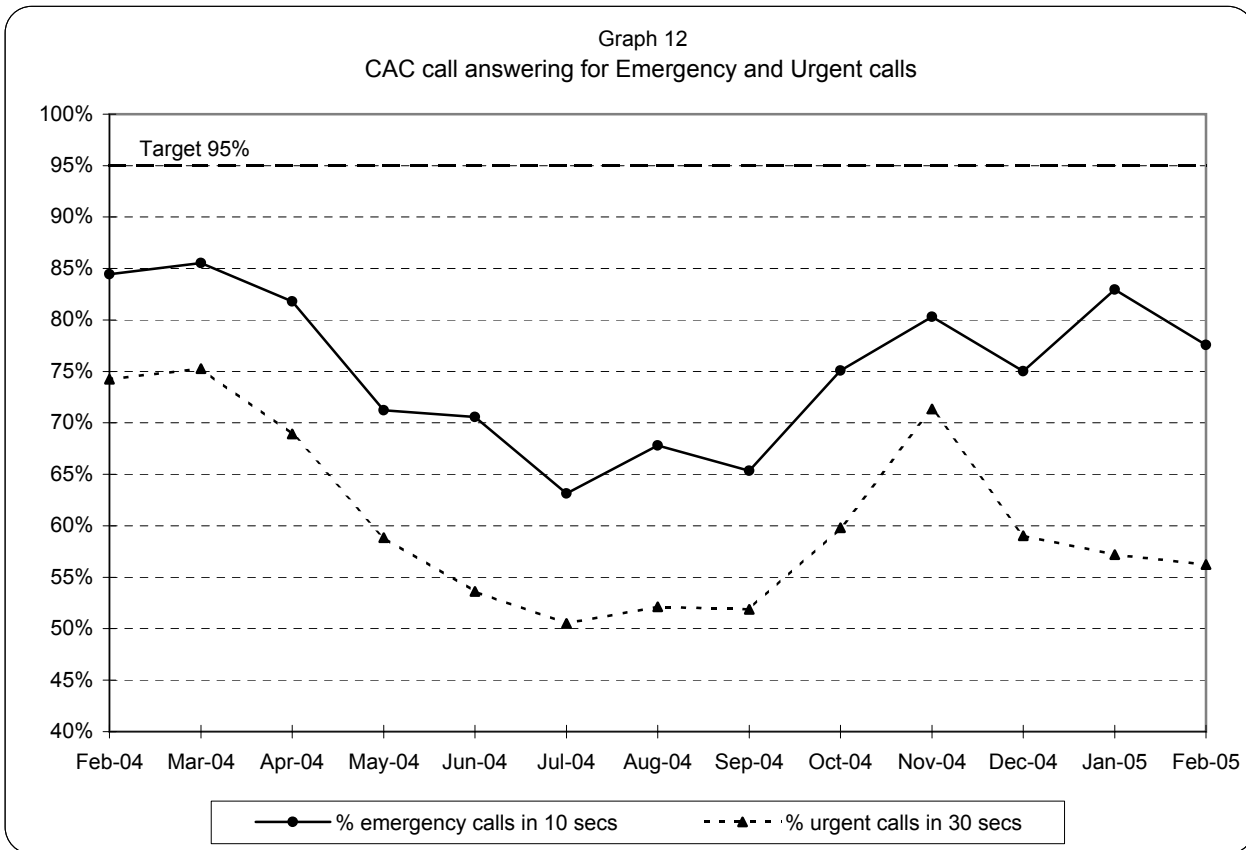


Note:staffed = plan + additional - unmanned - single

**London Ambulance Service NHS Trust
Accident and Emergency Service
CAC activity and staffing**



**London Ambulance Service NHS Trust
Accident and Emergency Service
CAC call answering performance**



Note: 95% target applies to both Emergency and Urgent call answering

London Ambulance Service NHS Trust
Accident and Emergency Service
Category A activity and performance by Primary Care Trust

Table 3
Latest 3 months, December 2004 to February 2005

		December 2004		January 2005		February 2005		Year to date	
		Cat A resp	% cat A resp in 8 mins	Cat A resp	% cat A resp in 8 mins	Cat A resp	% cat A resp in 8 mins	Cat A resp	% cat A resp in 8 mins
5K5	Brent PCT	787	72%	701	69%	650	69%	7,255	74%
5HX	Ealing PCT	852	66%	848	69%	668	67%	7,805	72%
5H1	Hammersmith & Fulham PCT	423	80%	449	82%	356	82%	4,392	84%
5K6	Harrow PCT	518	78%	488	79%	395	74%	4,578	81%
5AT	Hillingdon PCT	702	72%	675	69%	626	70%	6,736	74%
5HY	Hounslow PCT	628	72%	558	71%	552	75%	5,702	74%
5LA	Kensington & Chelsea PCT	326	81%	321	81%	279	80%	3,123	81%
5LC	Westminster PCT	729	82%	714	82%	636	78%	7,650	84%
North West London Strategic HA		4,965	74%	4,754	74%	4,162	73%	47,241	77%
5A9	Barnet PCT	704	62%	643	66%	575	66%	6,444	69%
5K7	Camden PCT	651	86%	617	88%	560	87%	6,379	88%
5C1	Enfield PCT	779	75%	716	76%	634	75%	6,984	79%
5C9	Haringey PCT	701	69%	681	74%	583	71%	6,618	73%
5K8	Islington PCT	582	79%	602	86%	536	83%	5,778	84%
North Central London Strategic HA		3,417	74%	3,259	78%	2,888	76%	32,203	78%
5C2	Barking & Dagenham PCT	591	68%	559	71%	544	74%	5,347	72%
5C3	City & Hackney PCT	748	70%	685	73%	633	76%	7,236	71%
5A4	Havering PCT	498	60%	502	63%	388	73%	4,474	69%
5C5	Newham PCT	823	62%	809	68%	741	80%	8,079	69%
5NA	Redbridge PCT	594	66%	572	73%	483	73%	5,382	72%
5C4	Tower Hamlets PCT	629	72%	619	75%	524	80%	6,354	73%
5NC	Waltham Forest PCT	638	65%	599	68%	547	71%	5,845	70%
North East London Strategic HA		4,521	66%	4,345	70%	3,860	76%	42,717	71%
5AX	Bexley PCT	498	81%	444	79%	439	79%	4,475	83%
5A7	Bromley PCT	561	60%	583	70%	490	76%	5,496	68%
5A8	Greenwich PCT	742	77%	632	74%	568	77%	6,383	80%
5LD	Lambeth PCT	803	74%	796	80%	699	75%	7,996	81%
5LF	Lewisham PCT	726	74%	680	78%	564	71%	6,829	79%
5LE	Southwark PCT	850	81%	800	83%	739	82%	8,229	86%
South East London Strategic HA		4,180	75%	3,935	78%	3,499	77%	39,408	80%
5K9	Croydon PCT	786	63%	770	70%	707	73%	8,037	71%
5A5	Kingston PCT	272	79%	249	77%	216	78%	2,629	81%
5M6	Richmond & Twickenham PCT	279	73%	287	69%	278	71%	2,940	74%
5M7	Sutton & Merton PCT	691	76%	660	78%	612	83%	6,686	81%
5LG	Wandsworth PCT	615	78%	629	80%	566	79%	6,009	83%
South West London Strategic HA		2,643	72%	2,595	75%	2,379	77%	26,301	78%
	Lowest (excl out of London)		60%		63%		66%		68%
	Highest (excl out of London)		86%		88%		87%		88%
	Range		26%		25%		21%		20%