



London Ambulance Service  
NHS Trust

# Information Pack for Trust Board

## August 2006

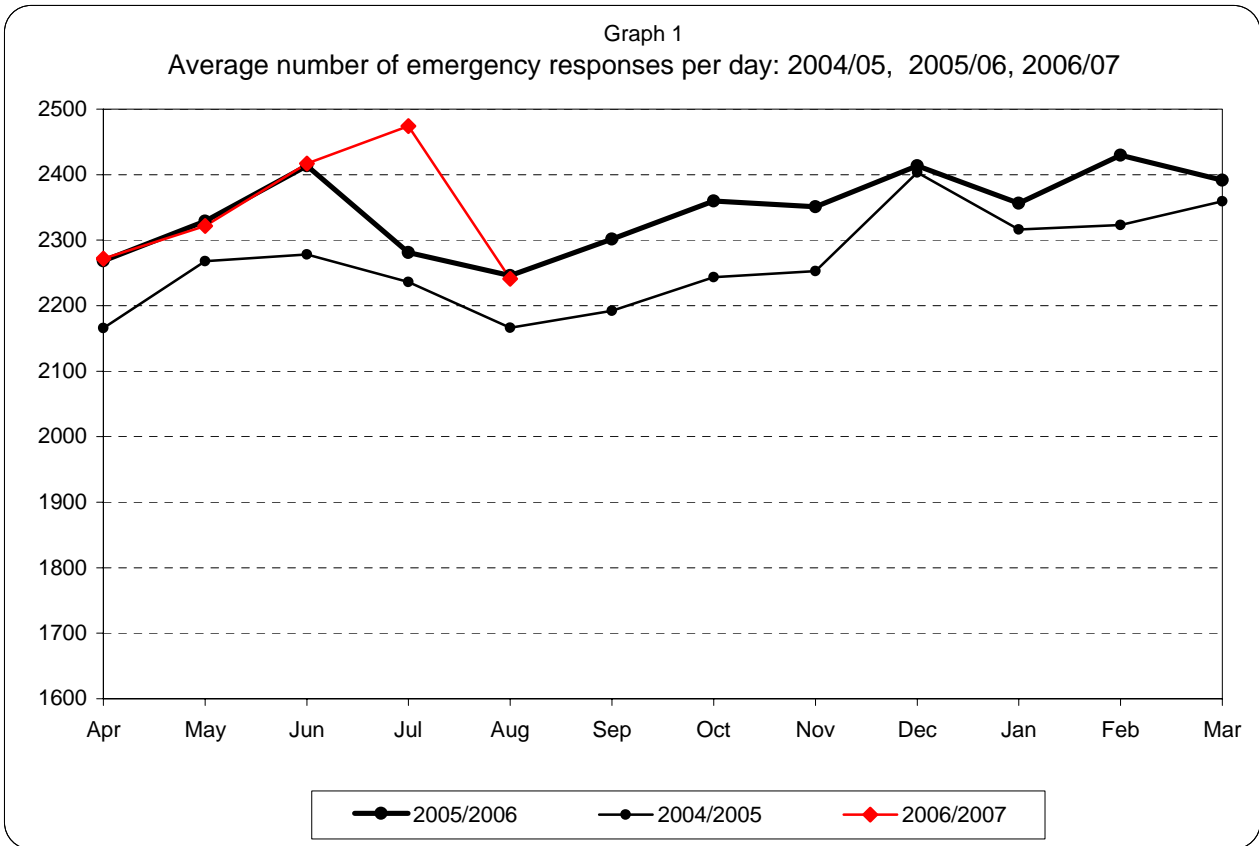
---

Please note:

PRF data entry is not yet complete for August 06

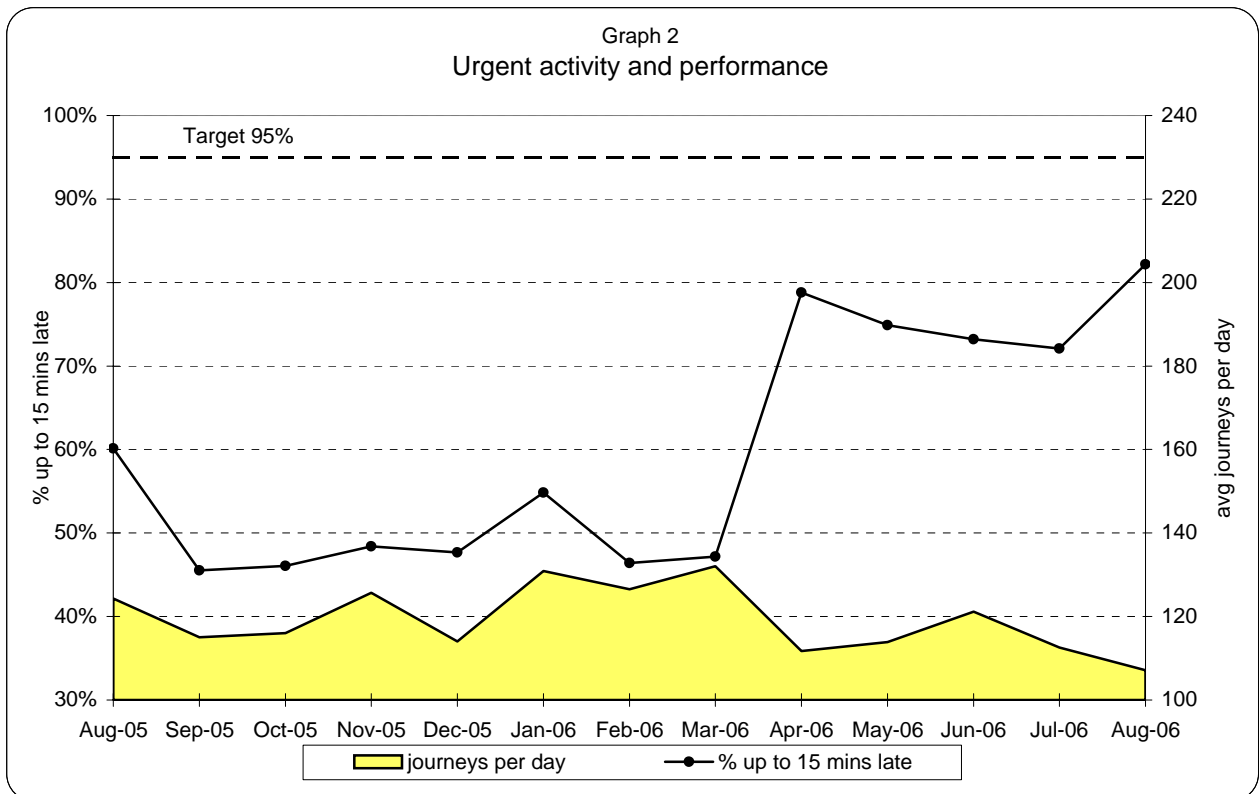
---

**London Ambulance Service NHS Trust  
Accident and Emergency Service  
Emergency activity and Urgent activity and performance**

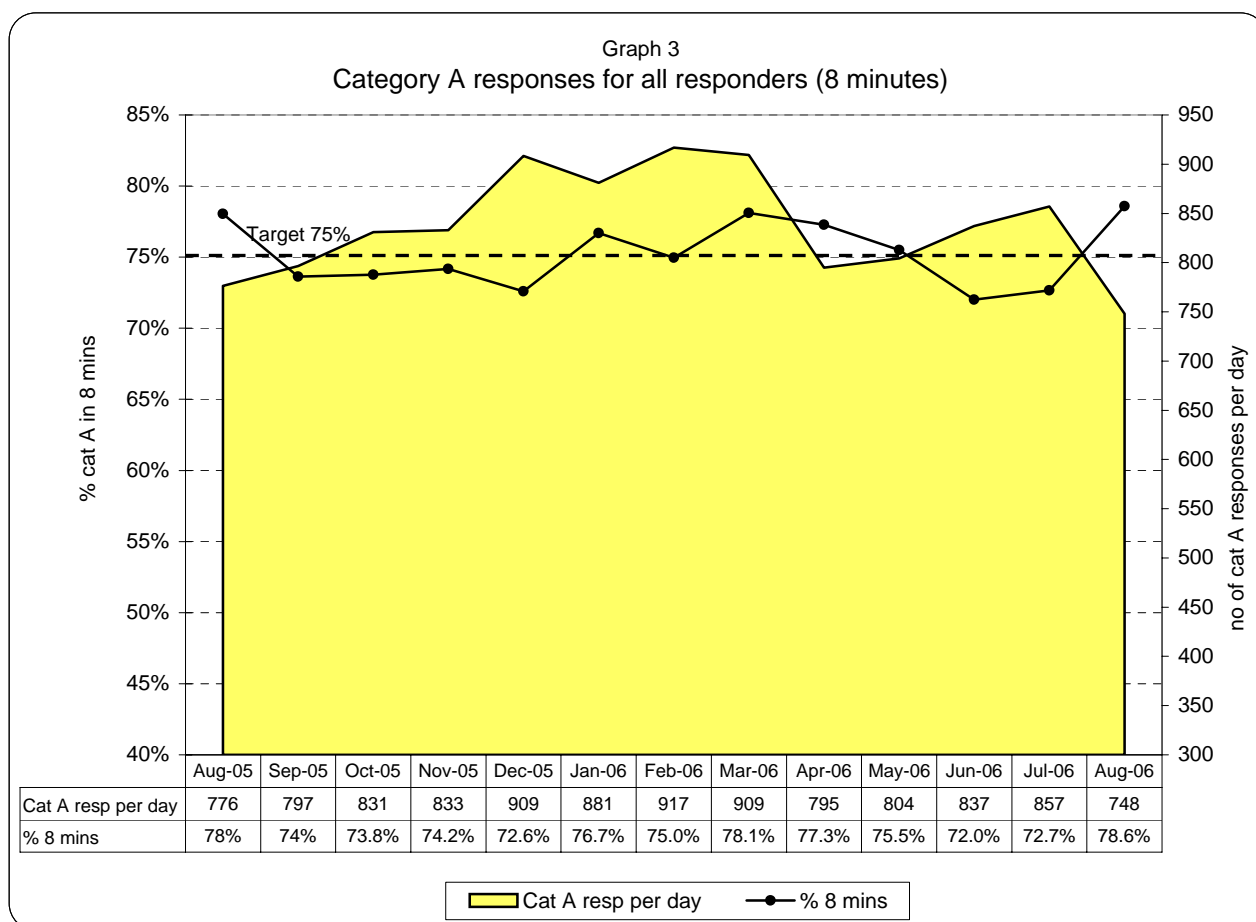


**Emergency responses: monthly and year to date comparison**

Aug 06 v Aug 05	Apr 06-Aug 06 v Apr 05-Aug 05
-0.2%	+1.6%



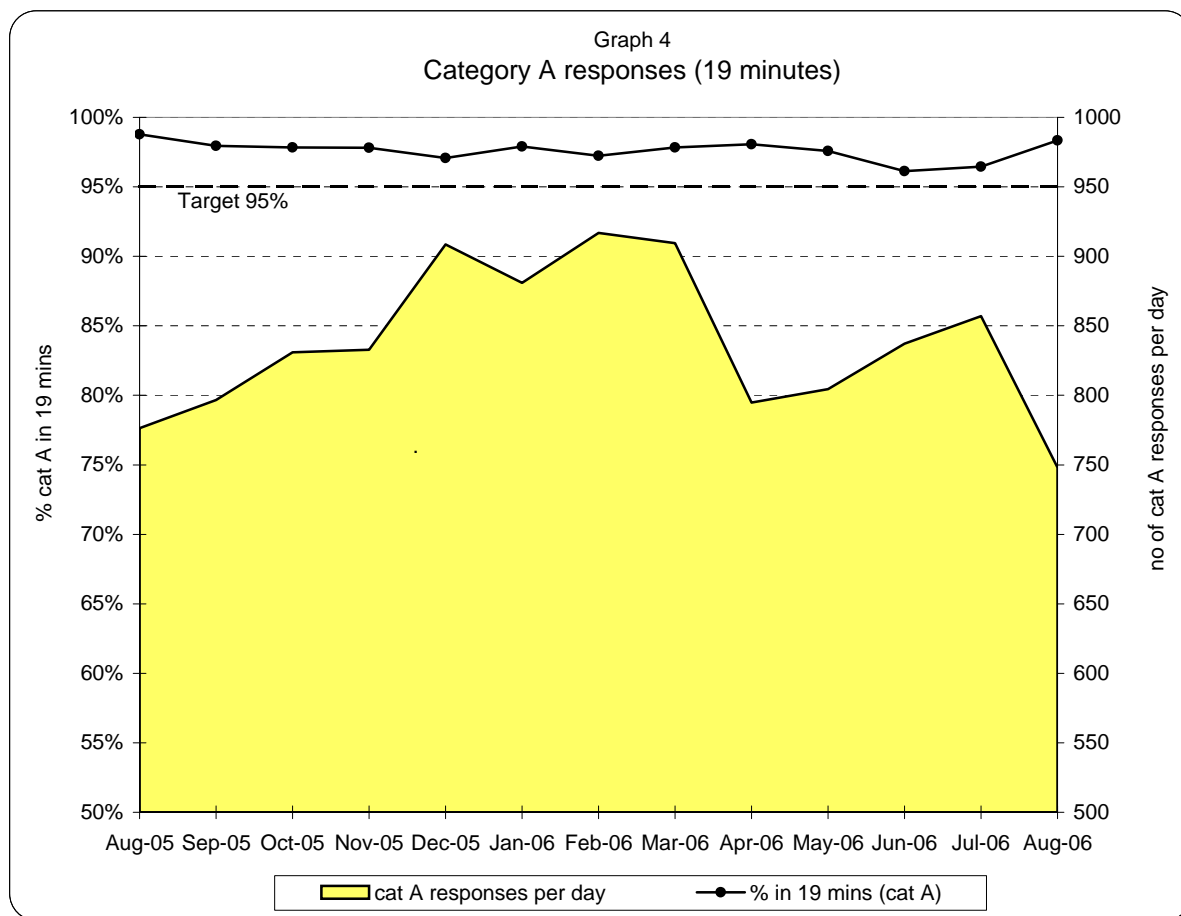
**London Ambulance Service NHS Trust  
Accident and Emergency Service  
Emergency responses: 8 minute response activity and performance**



**Table 1  
8 minute response by Strategic Health Authority (cat A, for all responders)**

	North West London Strategic HA	North Central London Strategic HA	North East London Strategic HA	South East London Strategic HA	South West London Strategic HA	Total LAS
<b>Apr-06</b>	79%	81%	74%	77%	76%	<b>77%</b>
<b>May-06</b>	77%	79%	71%	75%	76%	<b>76%</b>
<b>Jun-06</b>	72%	75%	69%	72%	72%	<b>72%</b>
<b>Jul-06</b>	73%	73%	70%	74%	74%	<b>73%</b>
<b>Aug-06</b>	79%	79%	76%	80%	80%	<b>79%</b>
<b>Sep-06</b>						
<b>Oct-06</b>						
<b>Nov-06</b>						
<b>Dec-06</b>						
<b>Jan-07</b>						
<b>Feb-07</b>						
<b>Mar-07</b>						
<b>YTD</b>	<b>76%</b>	<b>77%</b>	<b>72%</b>	<b>76%</b>	<b>76%</b>	<b>74%</b>

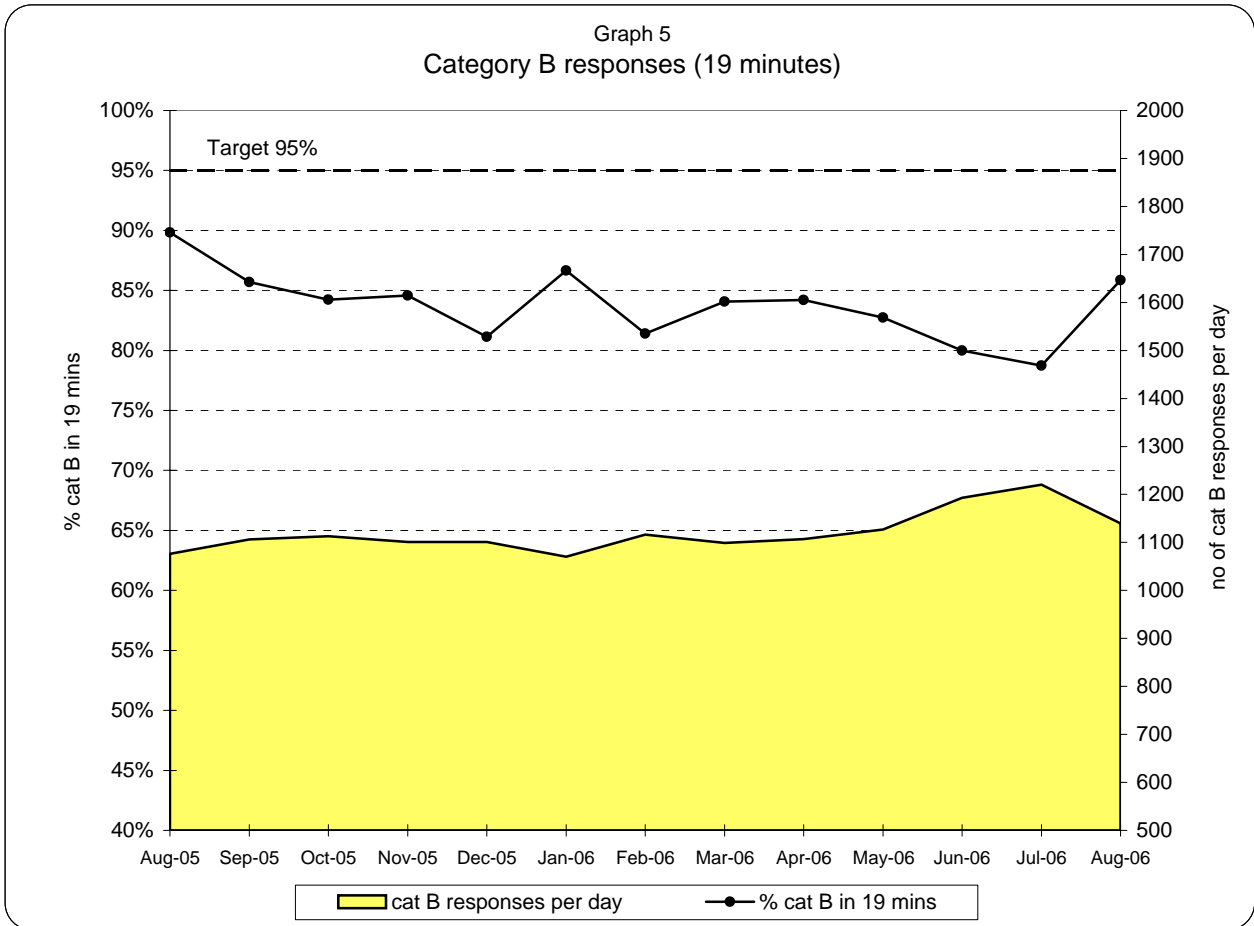
**London Ambulance Service NHS Trust  
Accident and Emergency Service  
Emergency responses: 19 minute response activity and performance (cat A)**



**Table 2  
19 minute response by Strategic Health Authority (category A)**

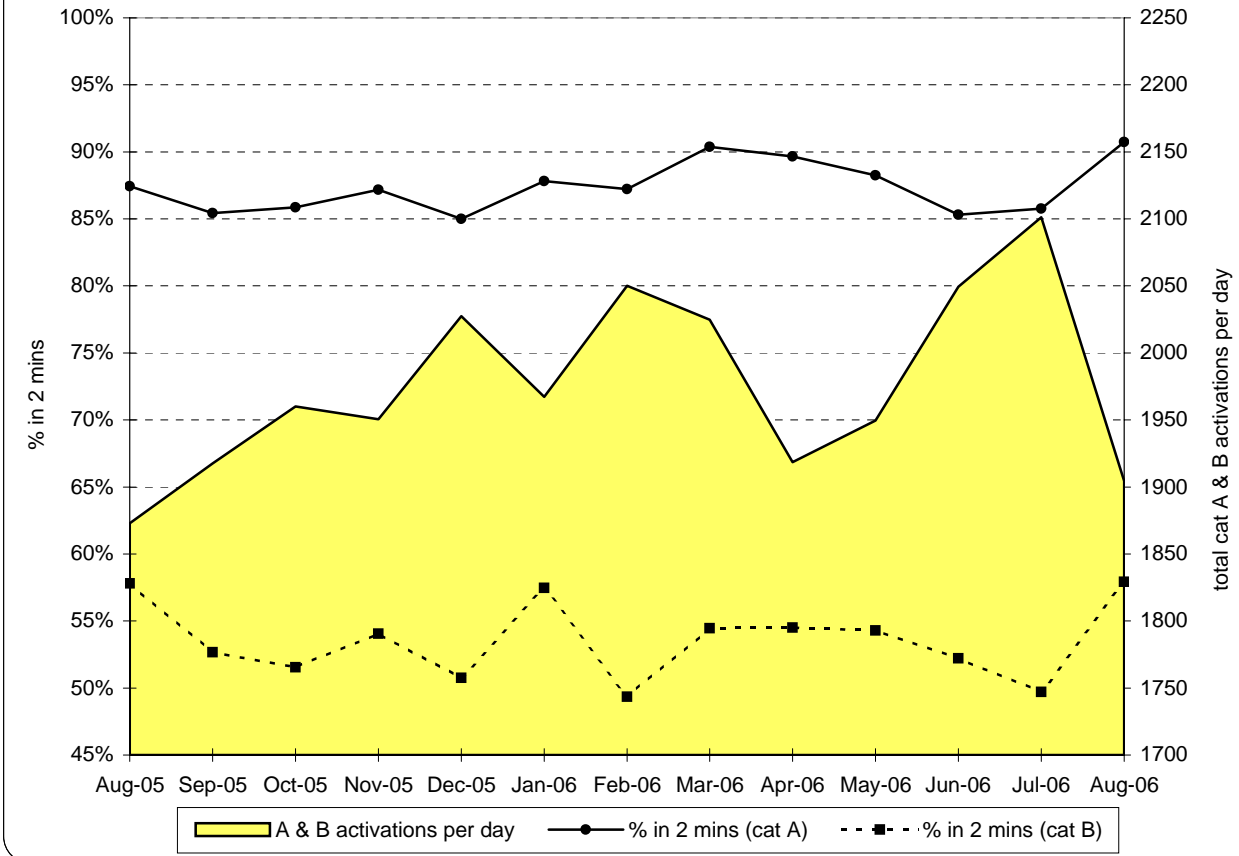
	North West London Strategic HA	North Central London Strategic HA	North East London Strategic HA	South East London Strategic HA	South West London Strategic HA	Total LAS
Apr-06	99%	99%	97%	98%	99%	98%
May-06	98%	98%	96%	98%	98%	98%
Jun-06	97%	97%	95%	96%	96%	96%
Jul-06	97%	96%	95%	97%	97%	97%
Aug-06						
Sep-06						
Oct-06						
Nov-06						
Dec-06						
Jan-07						
Feb-07						
Mar-07						
YTD	98%	97%	96%	97%	98%	97%

**London Ambulance Service NHS Trust  
Accident and Emergency Service  
Emergency responses: 19 minute response activity and performance (cat B)**



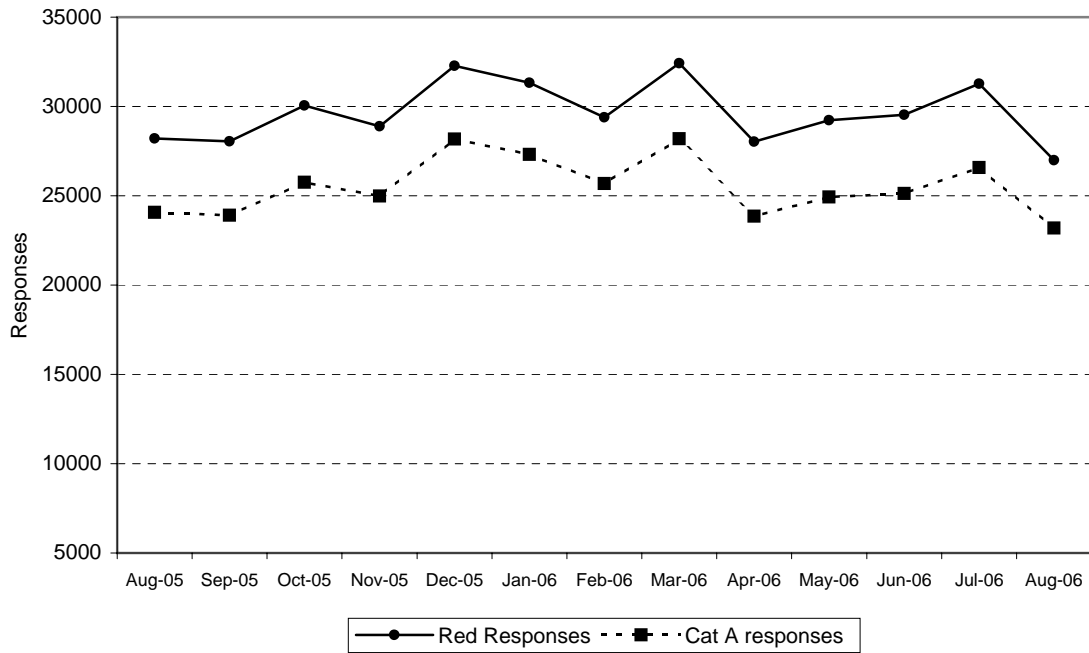
**London Ambulance Service NHS Trust  
Accident and Emergency Service  
Emergency activations: activity and performance**

Graph 6  
Category A and B activations

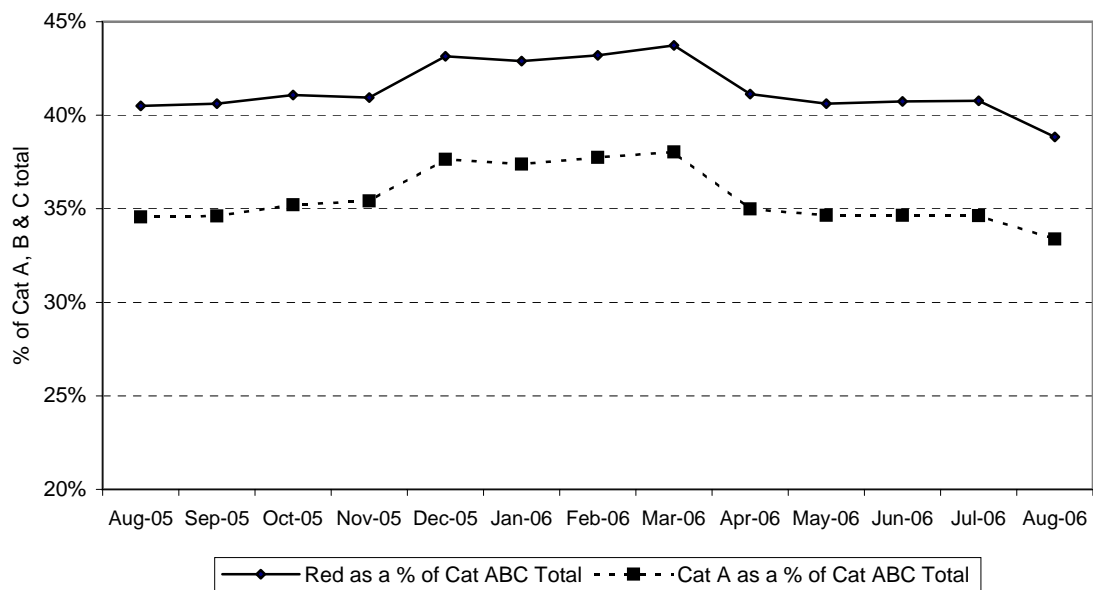


**London Ambulance Service NHS Trust  
Accident and Emergency Service  
Category A and Red Responses**

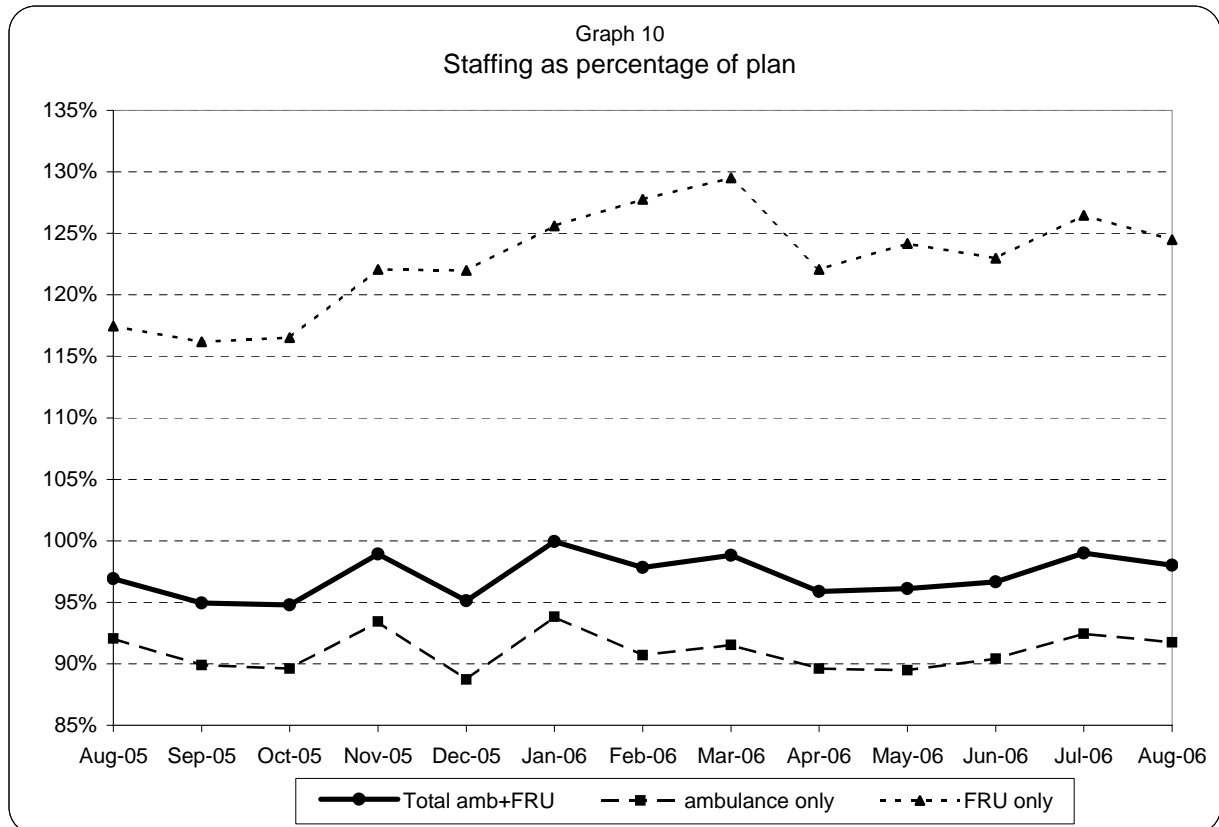
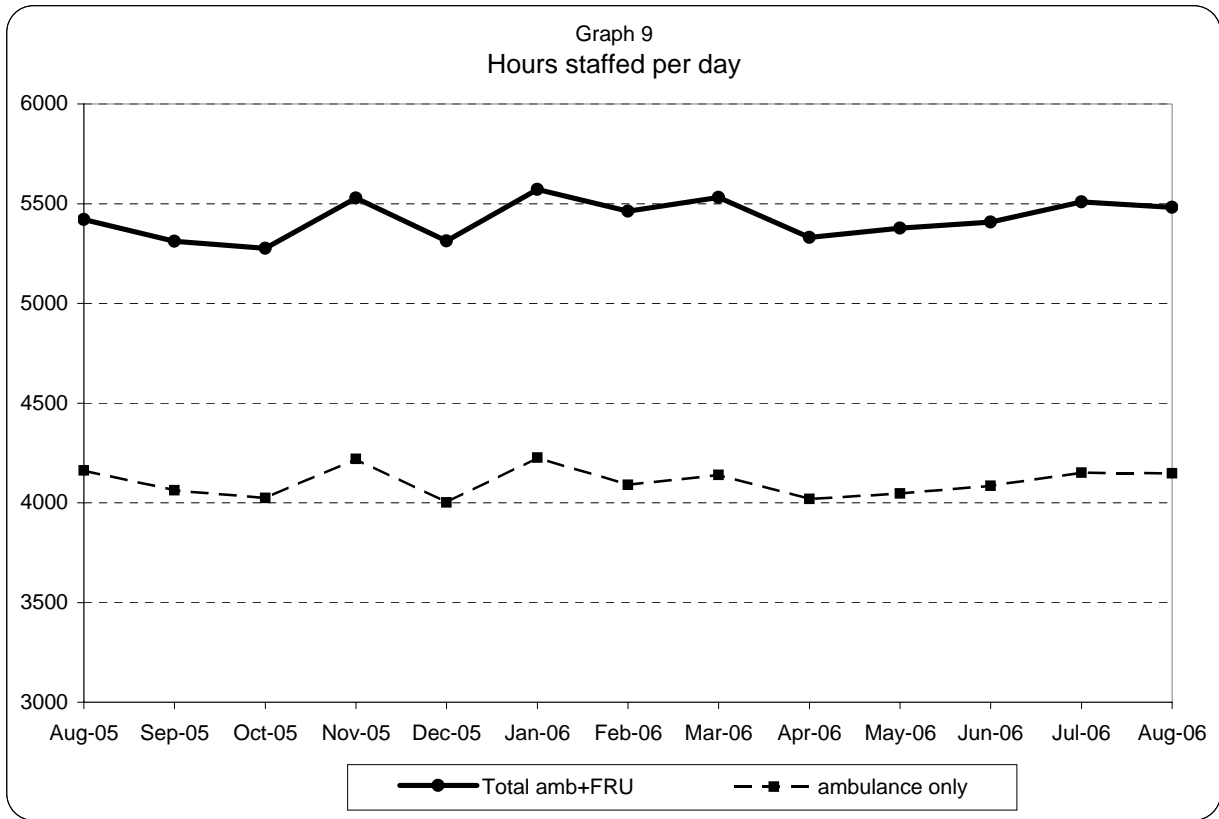
Graph 7  
Total Category A and Red Responses



Graph 8  
Category A and Red Responses as a percentage of the total Cat A, B & C demand



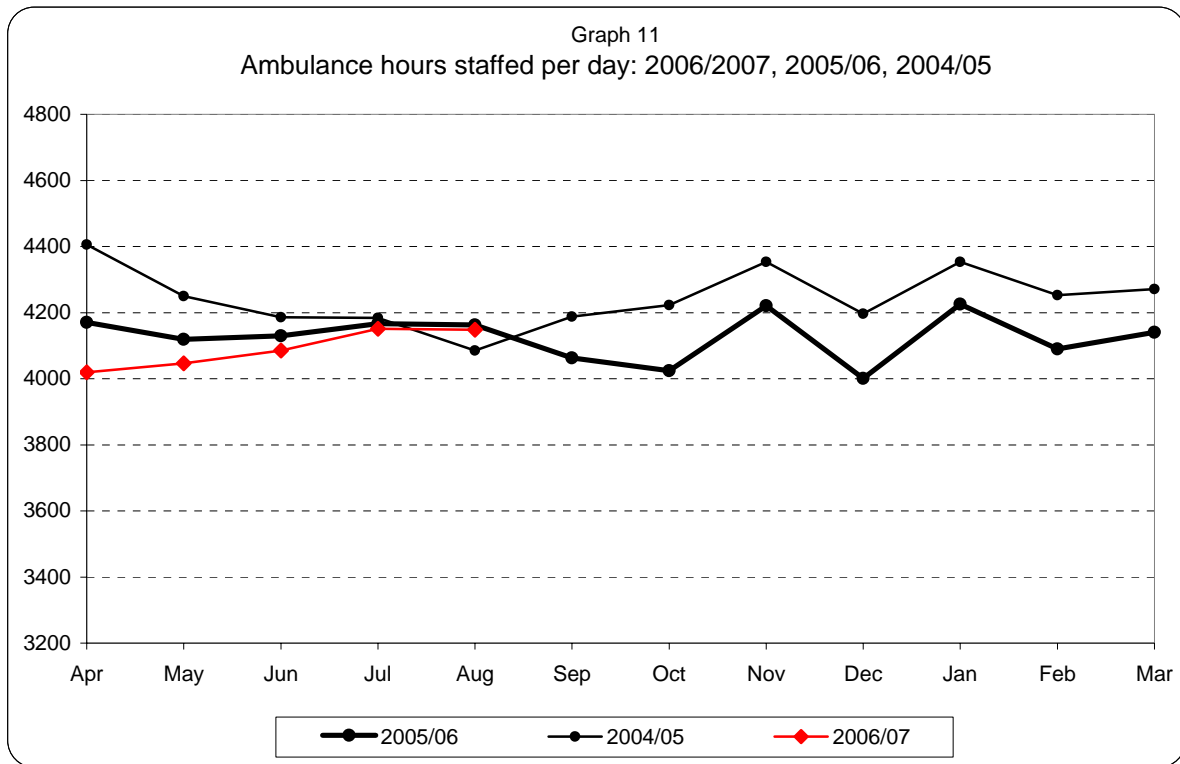
**London Ambulance Service NHS Trust  
Accident and Emergency Service  
Ambulance and FRU staffing**



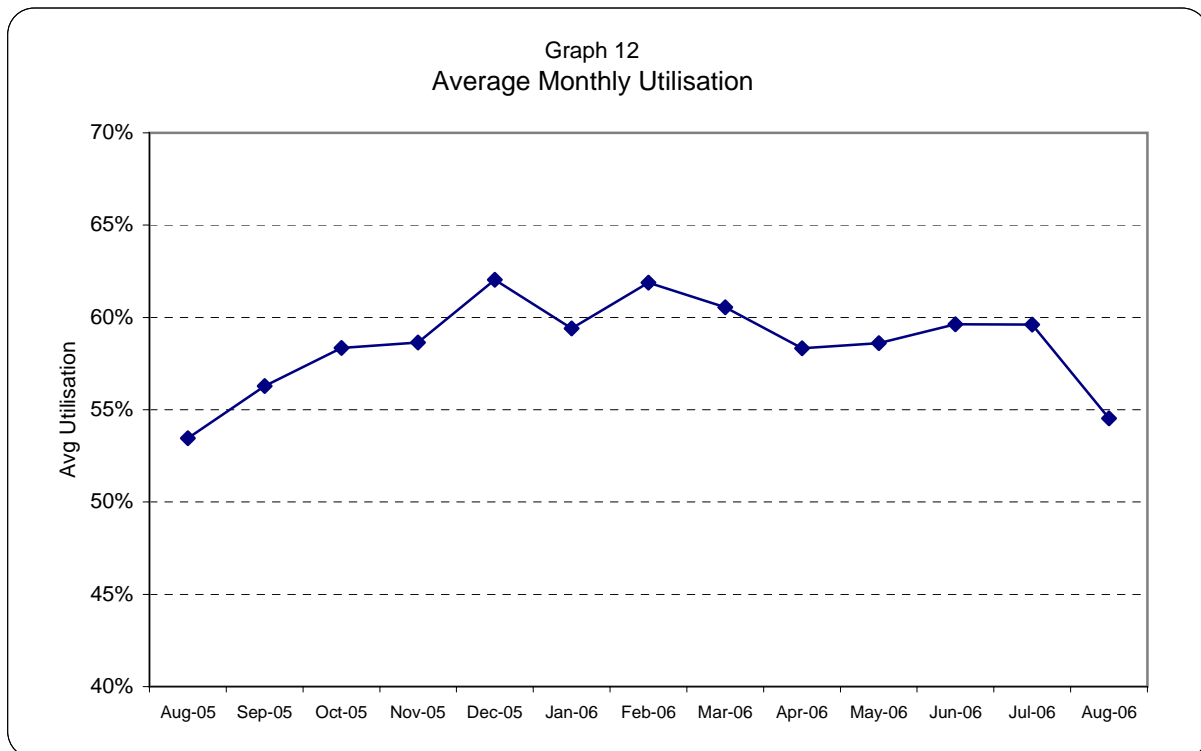
Note:  
1) staffed = plan + additional - unmanned - single



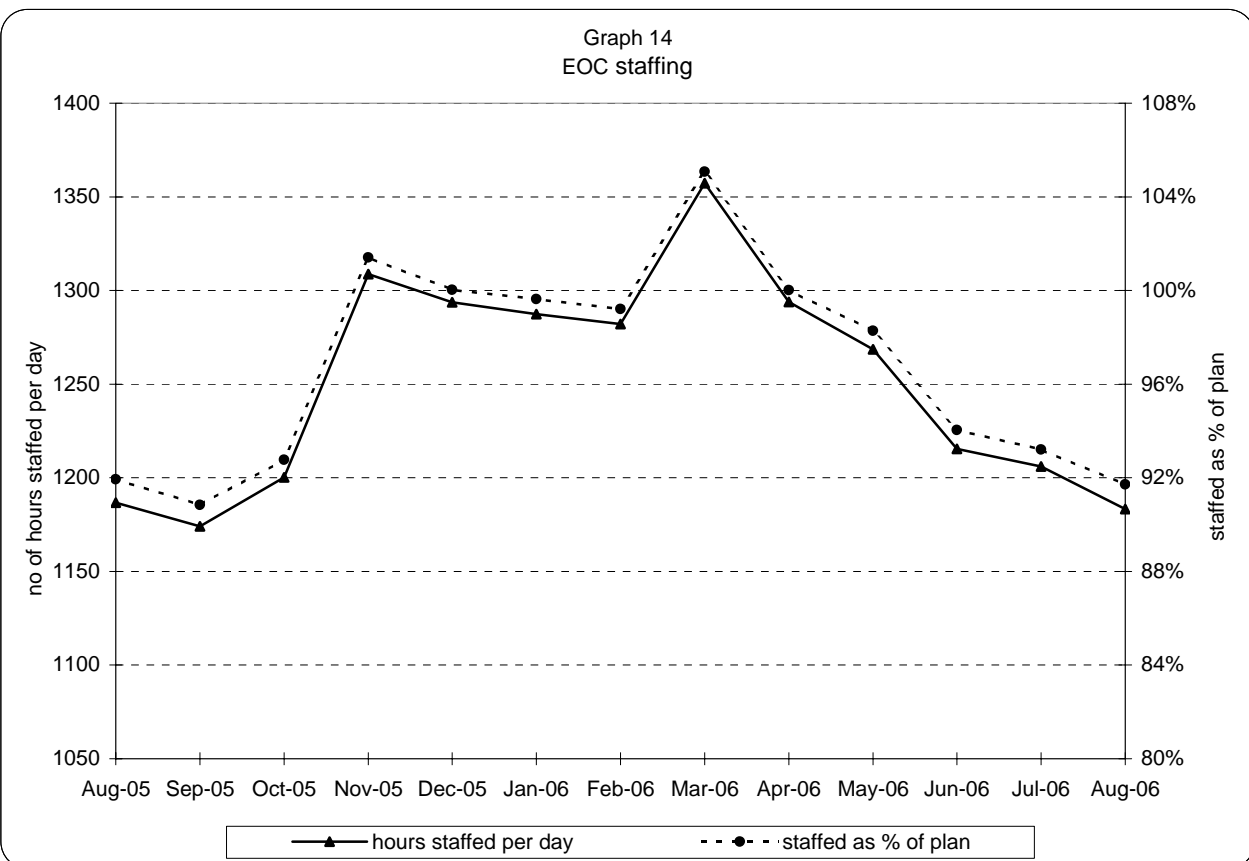
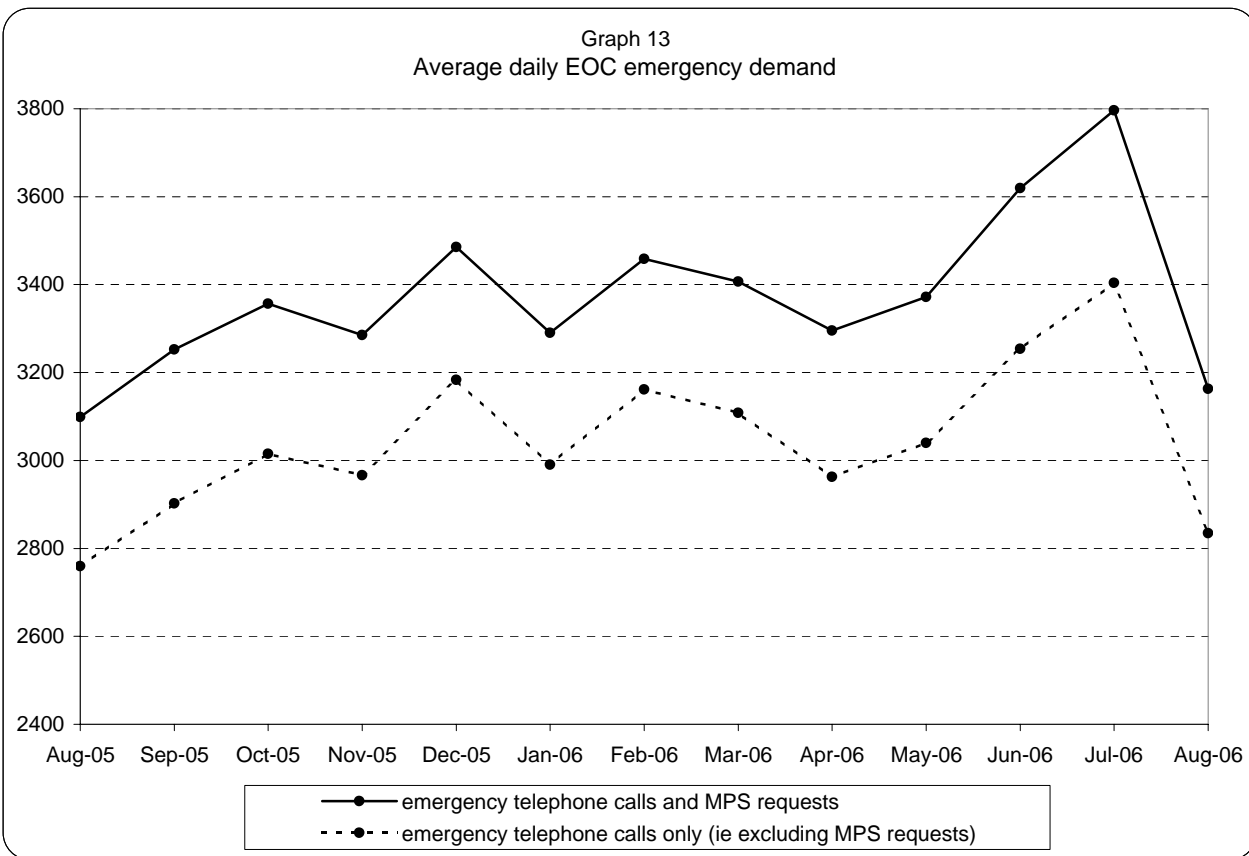
**London Ambulance Service NHS Trust  
Accident and Emergency Service  
Yearly comparison of ambulance staffing and Average Monthly Utilisation**



Note:staffed = plan + additional - unmanned - single

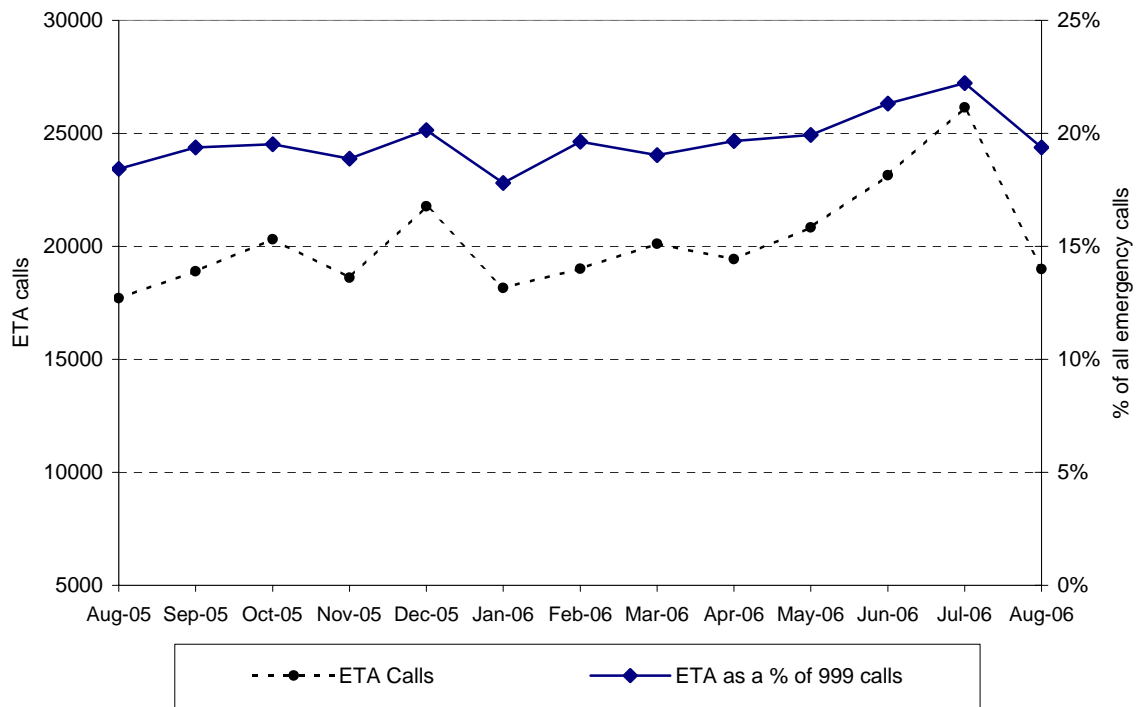


**London Ambulance Service NHS Trust  
Accident and Emergency Service  
EOC activity and staffing**

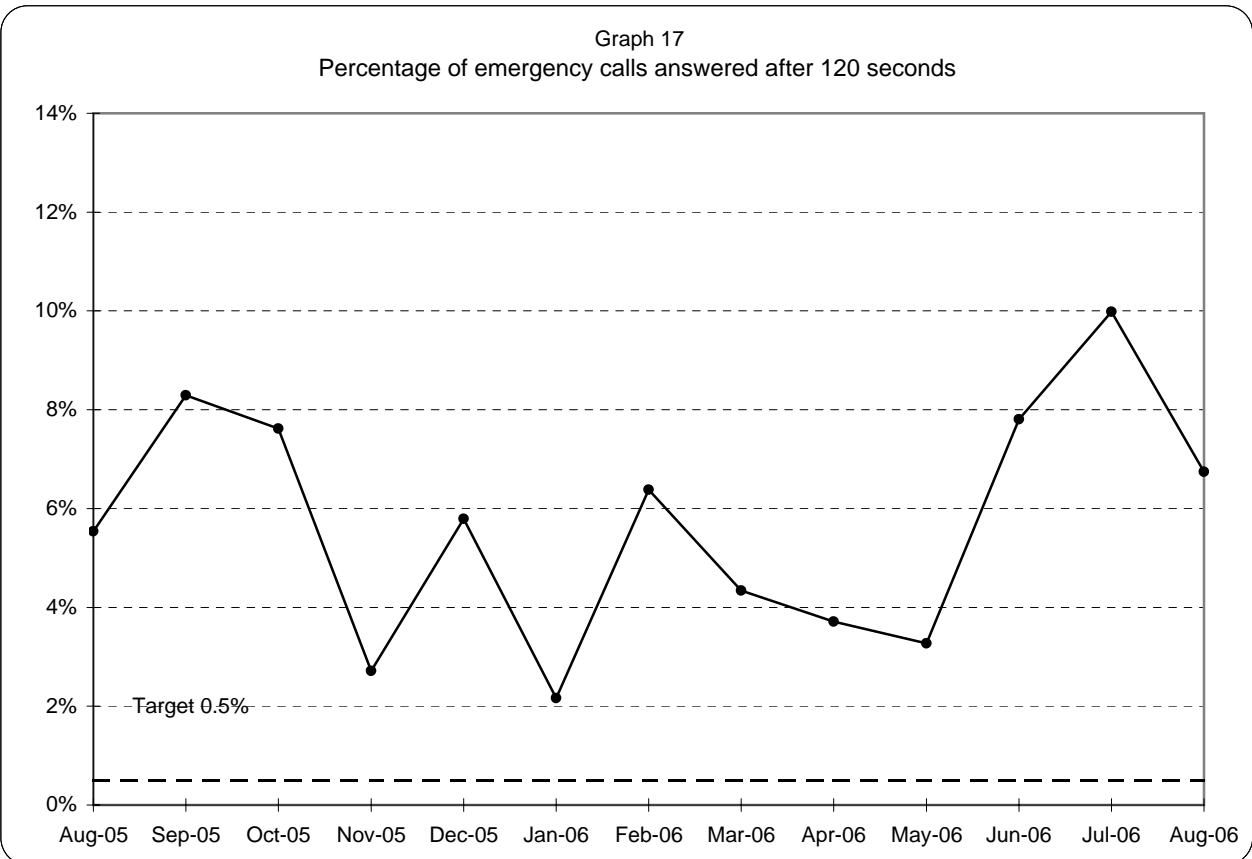
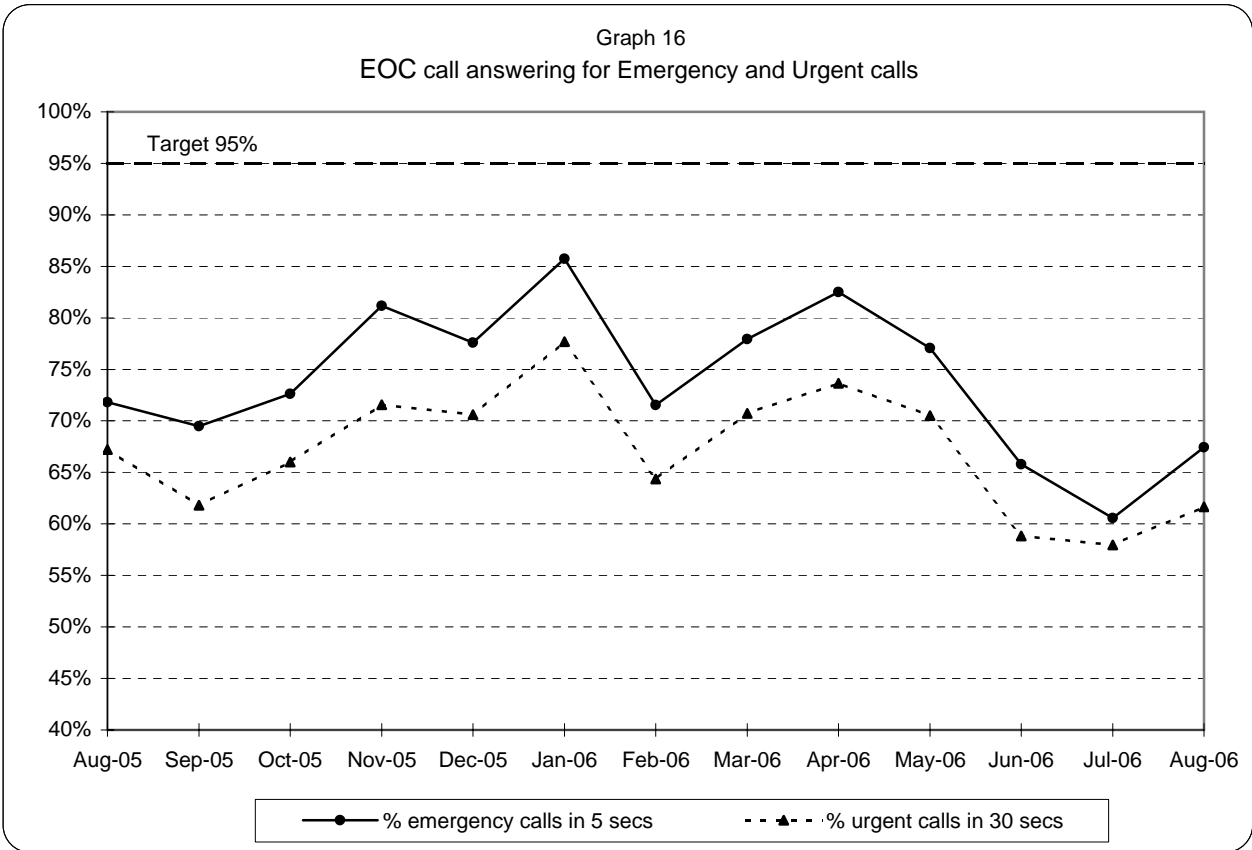


**London Ambulance Service NHS Trust  
Accident and Emergency Service  
ETA calls as a percentage of all emergency calls**

Graph 15  
ETA calls as a percentage of all emergency calls



**London Ambulance Service NHS Trust  
Accident and Emergency Service  
EOC call answering performance**



Note: 95% target applies to both Emergency and Urgent call answering

**London Ambulance Service NHS Trust**  
**Accident and Emergency Service**  
**Category A activity and performance by Primary Care Trust**

Table 3

		Jun-06			Jul-06			Aug-06			Year to date		
		Cat A resp	Cat A in 8	% cat A resp in 8 mins	Cat A resp	Cat A in 8	% cat A resp in 8 mins	Cat A resp	Cat A in 8	% cat A resp in 8 mins	Cat A resp	Cat A in 8	% cat A resp in 8 mins
5K5	Brent PCT	988	689	70%	965	657	68%	863	633	73%	4,546	3,266	72%
5HX	Ealing PCT	1,038	690	66%	1,048	760	73%	928	726	78%	5,014	3,680	73%
5H1	Hammersmith & Fulham PCT	618	499	81%	639	472	74%	566	485	86%	2,963	2,366	80%
5K6	Harrow PCT	600	469	78%	629	489	78%	563	464	82%	2,954	2,374	80%
5AT	Hillingdon PCT	938	683	73%	925	687	74%	832	633	76%	4,481	3,352	75%
5HY	Hounslow PCT	747	526	70%	762	565	74%	634	520	82%	3,570	2,721	76%
5LA	Kensington & Chelsea PCT	502	363	72%	419	300	72%	443	335	76%	2,229	1,684	76%
5LC	Westminster PCT	1,166	857	73%	1,237	937	76%	1,127	902	80%	5,672	4,452	78%
<b>North West London Strategic HA</b>		<b>6,597</b>	<b>4,776</b>	<b>72%</b>	<b>6,624</b>	<b>4,867</b>	<b>73%</b>	<b>5,956</b>	<b>4,698</b>	<b>79%</b>	<b>31,429</b>	<b>23,895</b>	<b>76%</b>
5A9	Barnet PCT	868	612	71%	1,043	680	65%	852	605	71%	4,606	3,212	70%
5K7	Camden PCT	875	722	83%	946	778	82%	791	673	85%	4,263	3,610	85%
5C1	Enfield PCT	908	653	72%	934	674	72%	792	616	78%	4,376	3,350	77%
5C9	Haringey PCT	868	614	71%	954	682	71%	723	560	77%	4,214	3,141	75%
5K8	Islington PCT	785	634	81%	851	618	73%	723	621	86%	3,857	3,128	81%
<b>North Central London Strategic HA</b>		<b>4,304</b>	<b>3,235</b>	<b>75%</b>	<b>4,728</b>	<b>3,432</b>	<b>73%</b>	<b>3,881</b>	<b>3,075</b>	<b>79%</b>	<b>21,316</b>	<b>16,441</b>	<b>77%</b>
5C2	Barking & Dagenham PCT	658	472	72%	701	506	72%	608	456	75%	3,267	2,393	73%
5C3	City & Hackney PCT	943	693	73%	1,047	718	69%	841	675	80%	4,738	3,483	74%
5A4	Havering PCT	617	423	69%	626	463	74%	593	425	72%	3,094	2,198	71%
5C5	Newham PCT	1,044	708	68%	1,053	726	69%	865	674	78%	4,848	3,420	71%
5NA	Redbridge PCT	765	517	68%	663	490	74%	683	513	75%	3,464	2,526	73%
5C4	Tower Hamlets PCT	828	553	67%	931	600	64%	809	588	73%	4,200	2,909	69%
5NC	Waltham Forest PCT	756	514	68%	862	639	74%	701	532	76%	3,867	2,863	74%
<b>North East London Strategic HA</b>		<b>5,611</b>	<b>3,880</b>	<b>69%</b>	<b>5,883</b>	<b>4,142</b>	<b>70%</b>	<b>5,100</b>	<b>3,863</b>	<b>76%</b>	<b>27,478</b>	<b>19,792</b>	<b>72%</b>
5AX	Bexley PCT	577	451	78%	615	475	77%	557	459	82%	2,920	2,298	79%
5A7	Bromley PCT	781	545	70%	875	610	70%	773	591	76%	3,992	2,899	73%
5A8	Greenwich PCT	811	616	76%	862	656	76%	712	555	78%	4,030	3,091	77%
5LD	Lambeth PCT	1,069	758	71%	1,146	825	72%	951	775	81%	5,209	3,941	76%
5LF	Lewisham PCT	818	546	67%	866	638	74%	816	672	82%	4,155	3,078	74%
5LE	Southwark PCT	1,067	775	73%	1,151	851	74%	1,029	832	81%	5,431	4,130	76%
<b>South East London Strategic HA</b>		<b>5,123</b>	<b>3,691</b>	<b>72%</b>	<b>5,515</b>	<b>4,055</b>	<b>74%</b>	<b>4,838</b>	<b>3,884</b>	<b>80%</b>	<b>25,737</b>	<b>19,437</b>	<b>76%</b>
5K9	Croydon PCT	999	742	74%	1,058	763	72%	975	770	79%	5,007	3,770	75%
5A5	Kingston PCT	357	263	74%	413	316	77%	383	295	77%	1,931	1,459	76%
5M6	Richmond & Twickenham PCT	377	232	62%	462	324	70%	441	335	76%	2,084	1,480	71%
5M7	Sutton & Merton PCT	915	673	74%	948	710	75%	814	668	82%	4,543	3,515	77%
5LG	Wandsworth PCT	777	568	73%	880	673	76%	745	603	81%	3,856	2,946	76%
<b>South West London Strategic HA</b>		<b>3,425</b>	<b>2,478</b>	<b>72%</b>	<b>3,761</b>	<b>2,786</b>	<b>74%</b>	<b>3,358</b>	<b>2,671</b>	<b>80%</b>	<b>17,421</b>	<b>13,170</b>	<b>76%</b>
	Lowest (excl out of London)			62%			64%			71%			69%
	Highest (excl out of London)			83%			82%			86%			85%
	Range			21%			18%			15%			15%