



London Ambulance Service
NHS Trust

Information Pack for Trust Board

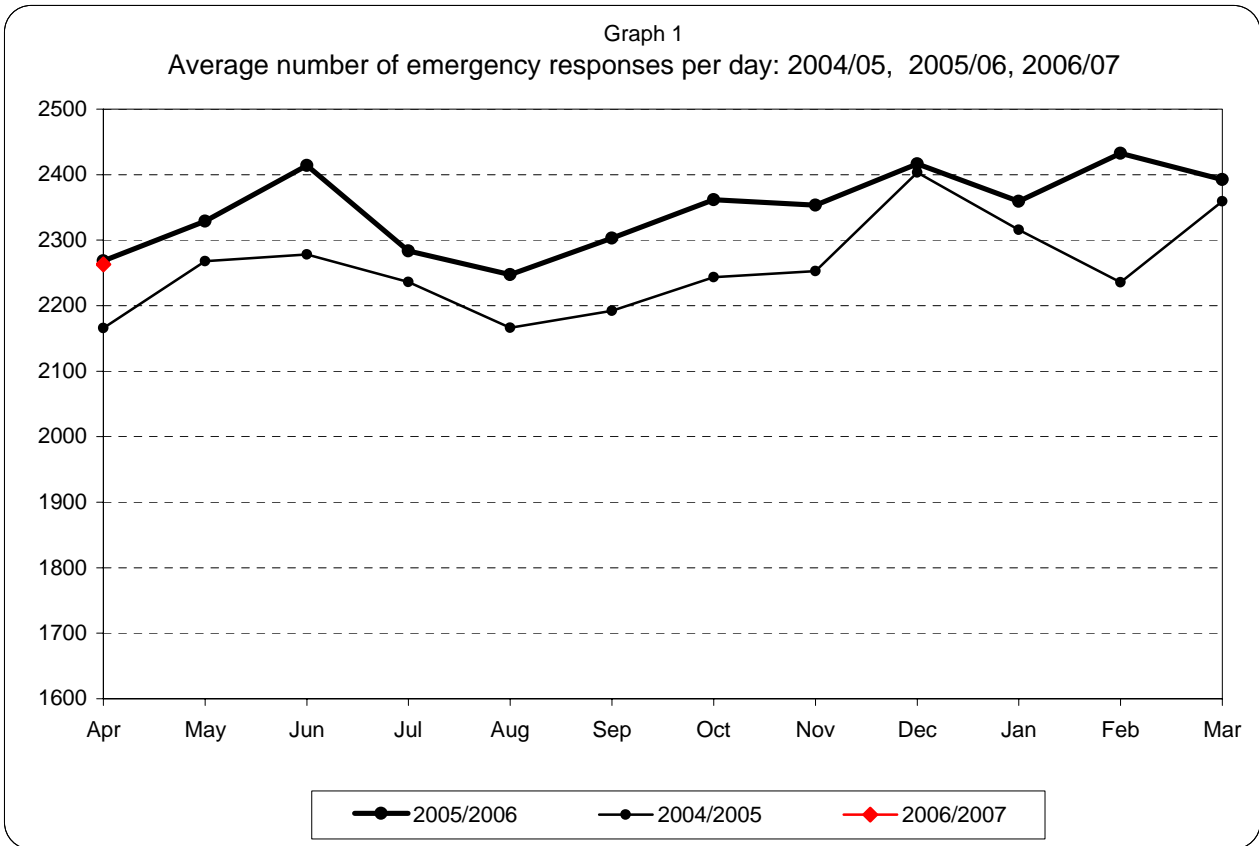
April 2006

Please note:

CAC staffing data entry is up to the 19th April 2006

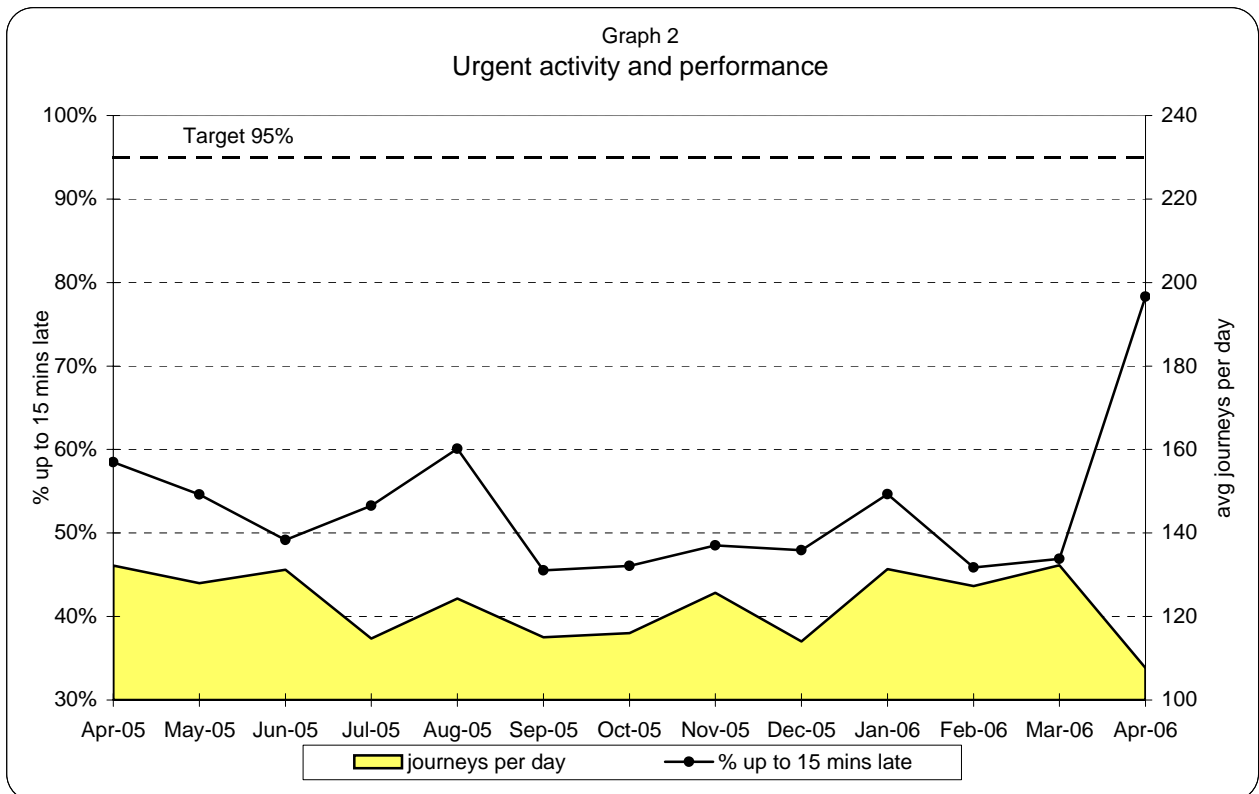
All other data entry is complete

**London Ambulance Service NHS Trust
Accident and Emergency Service
Emergency activity and Urgent activity and performance**

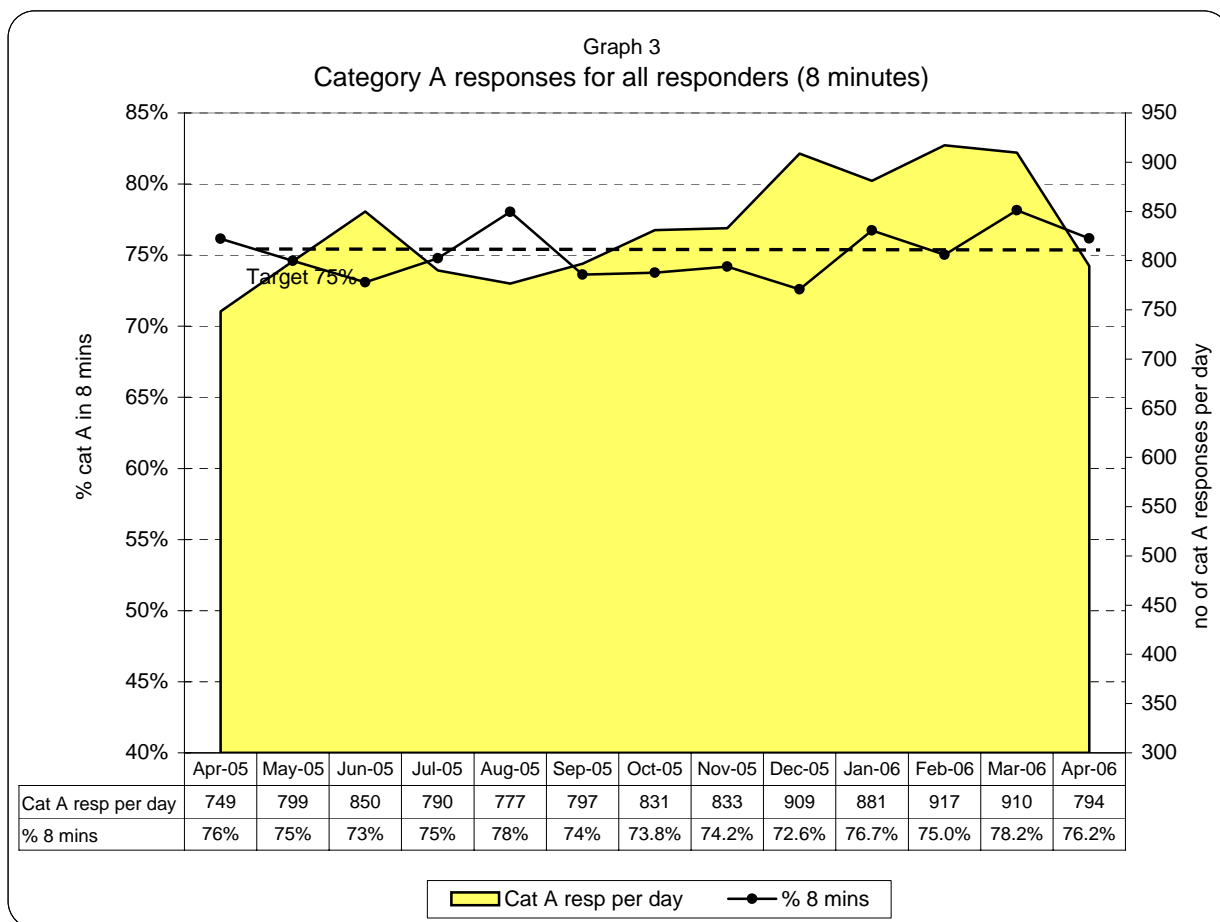


Emergency responses: monthly and year to date comparison

Apr 06 v Apr 05	Apr 06-Apr06 v Apr 05-Apr 05
-0.2%	-0.2%



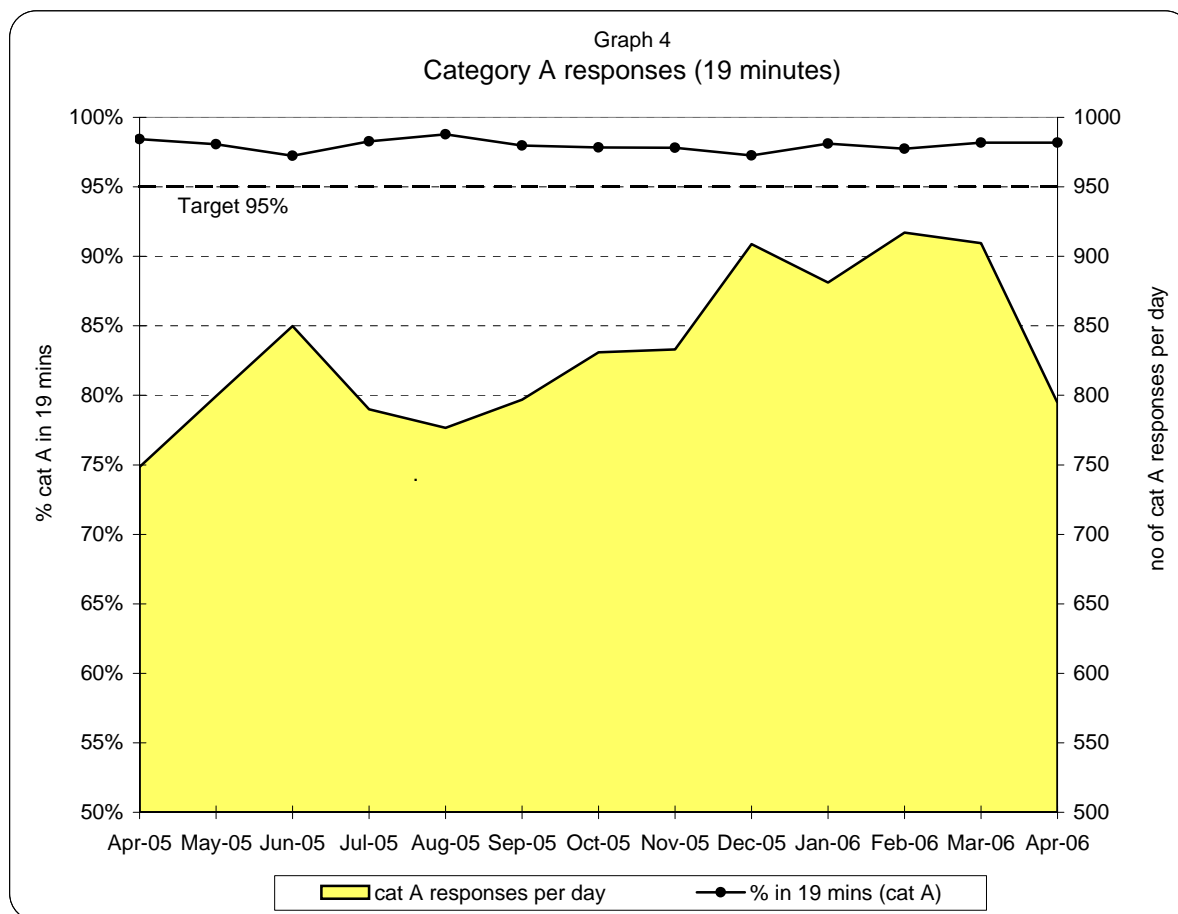
**London Ambulance Service NHS Trust
Accident and Emergency Service
Emergency responses: 8 minute response activity and performance**



**Table 1
8 minute response by Strategic Health Authority (cat A, for all responders)**

	North West London Strategic HA	North Central London Strategic HA	North East London Strategic HA	South East London Strategic HA	South West London Strategic HA	Total LAS
Apr-06	78%	80%	73%	76%	76%	76%
May-06						
Jun-06						
Jul-06						
Aug-06						
Sep-06						
Oct-06						
Nov-06						
Dec-06						
Jan-07						
Feb-07						
Mar-07						
YTD	78%	80%	73%	76%	76%	76%

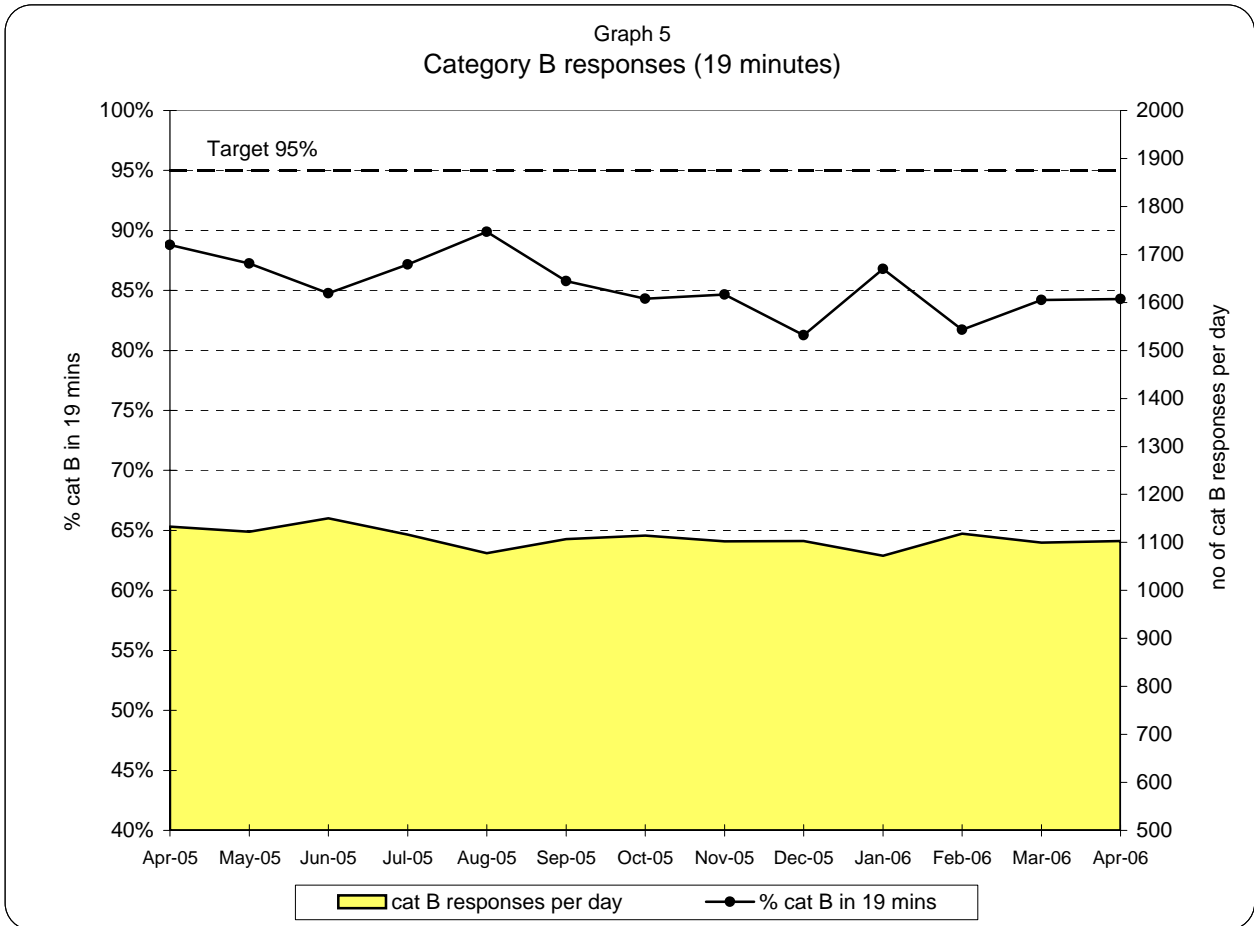
**London Ambulance Service NHS Trust
Accident and Emergency Service
Emergency responses: 19 minute response activity and performance (cat A)**



**Table 2
19 minute response by Strategic Health Authority (category A)**

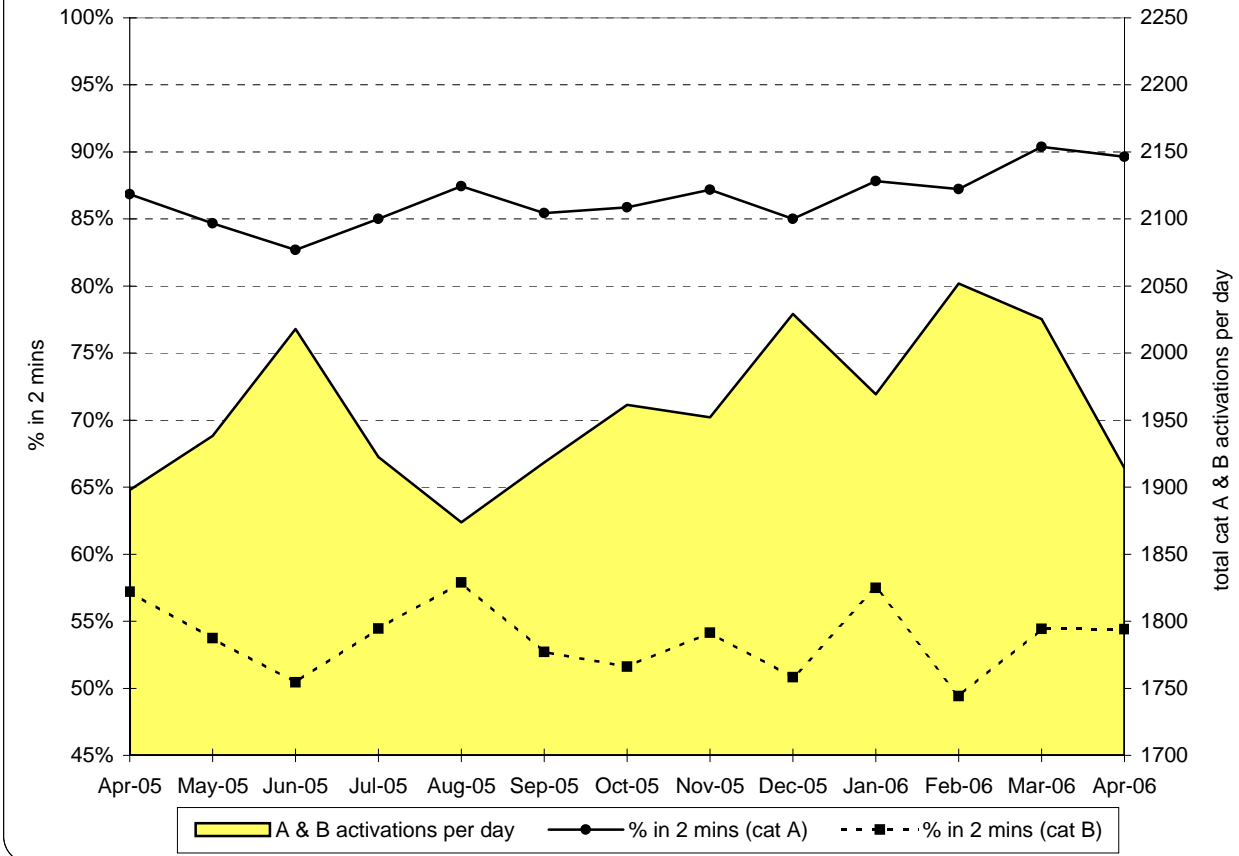
	North West London Strategic HA	North Central London Strategic HA	North East London Strategic HA	South East London Strategic HA	South West London Strategic HA	Total LAS
Apr-06	98.9%	98.6%	97.1%	98.2%	98.5%	98.2%
May-06						
Jun-06						
Jul-06						
Aug-06						
Sep-06						
Oct-06						
Nov-06						
Dec-06						
Jan-07						
Feb-07						
Mar-07						
YTD	98.9%	98.6%	97.1%	98.2%	98.5%	98.2%

**London Ambulance Service NHS Trust
Accident and Emergency Service
Emergency responses: 19 minute response activity and performance (cat B)**

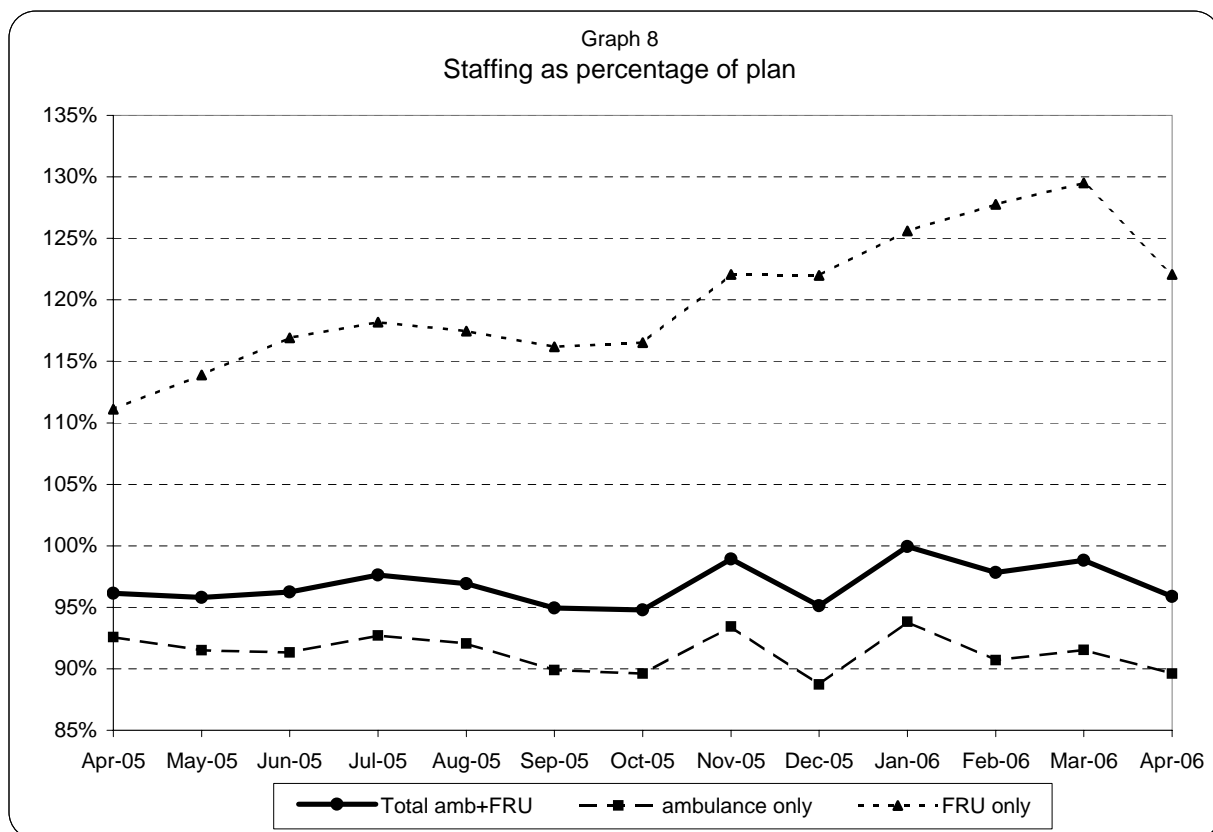
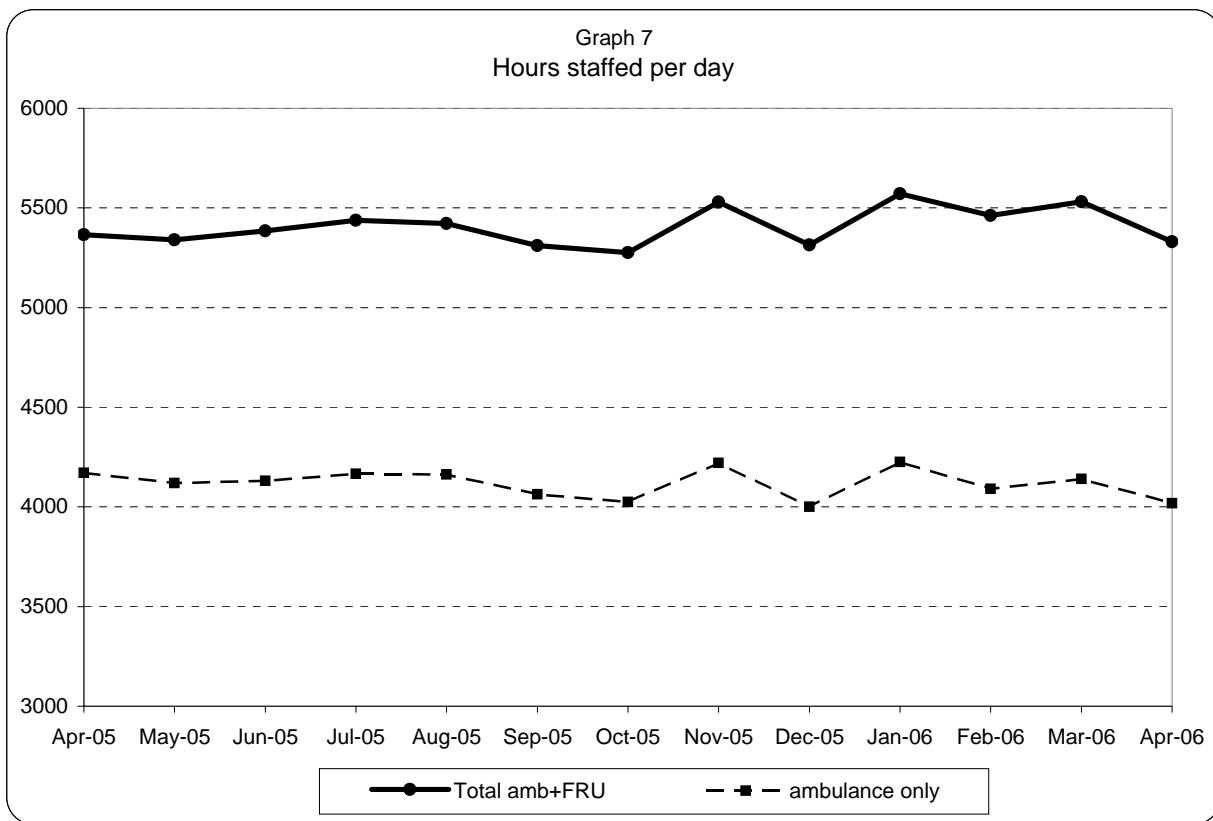


**London Ambulance Service NHS Trust
Accident and Emergency Service
Emergency activations: activity and performance**

Graph 6
Category A and B activations



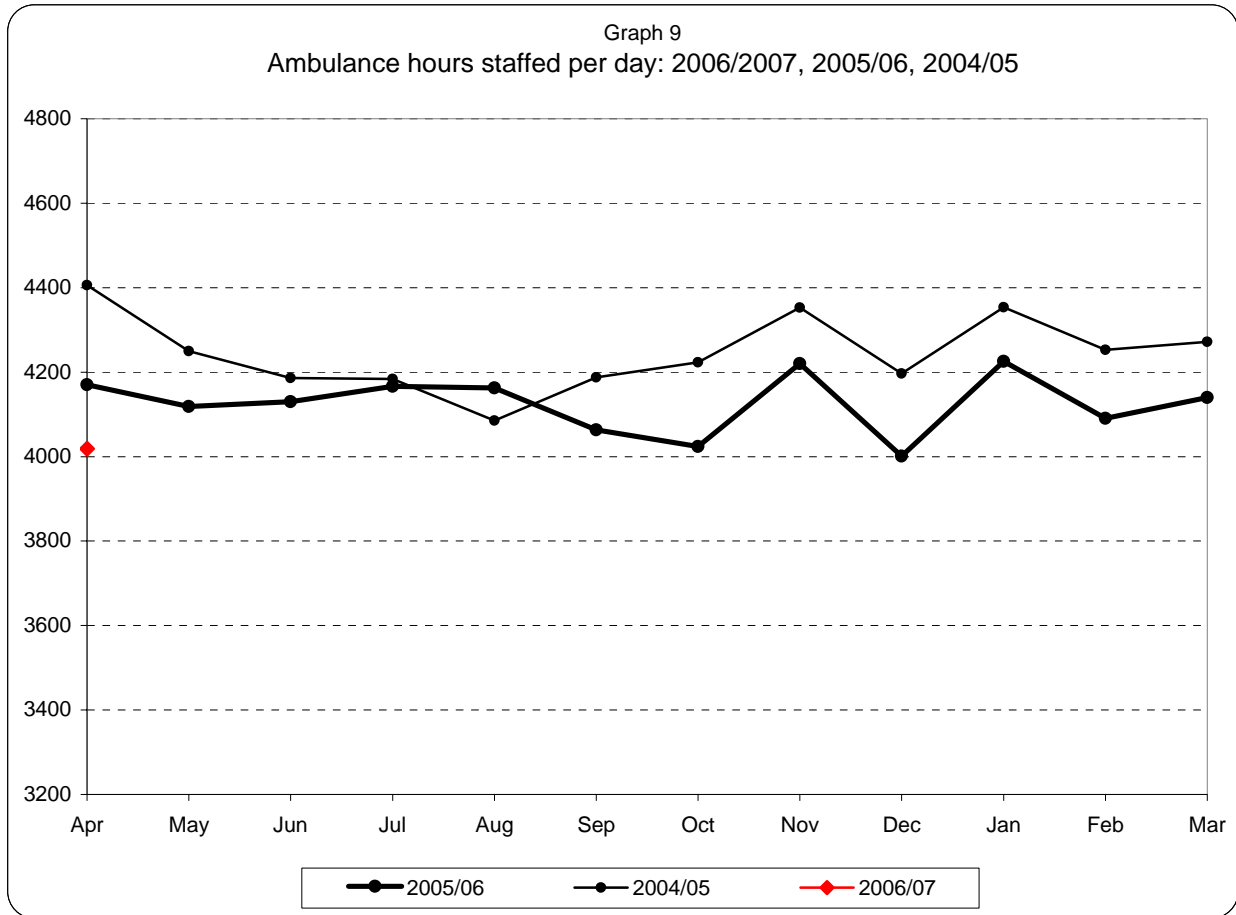
**London Ambulance Service NHS Trust
Accident and Emergency Service
Ambulance and FRU staffing**



Note:

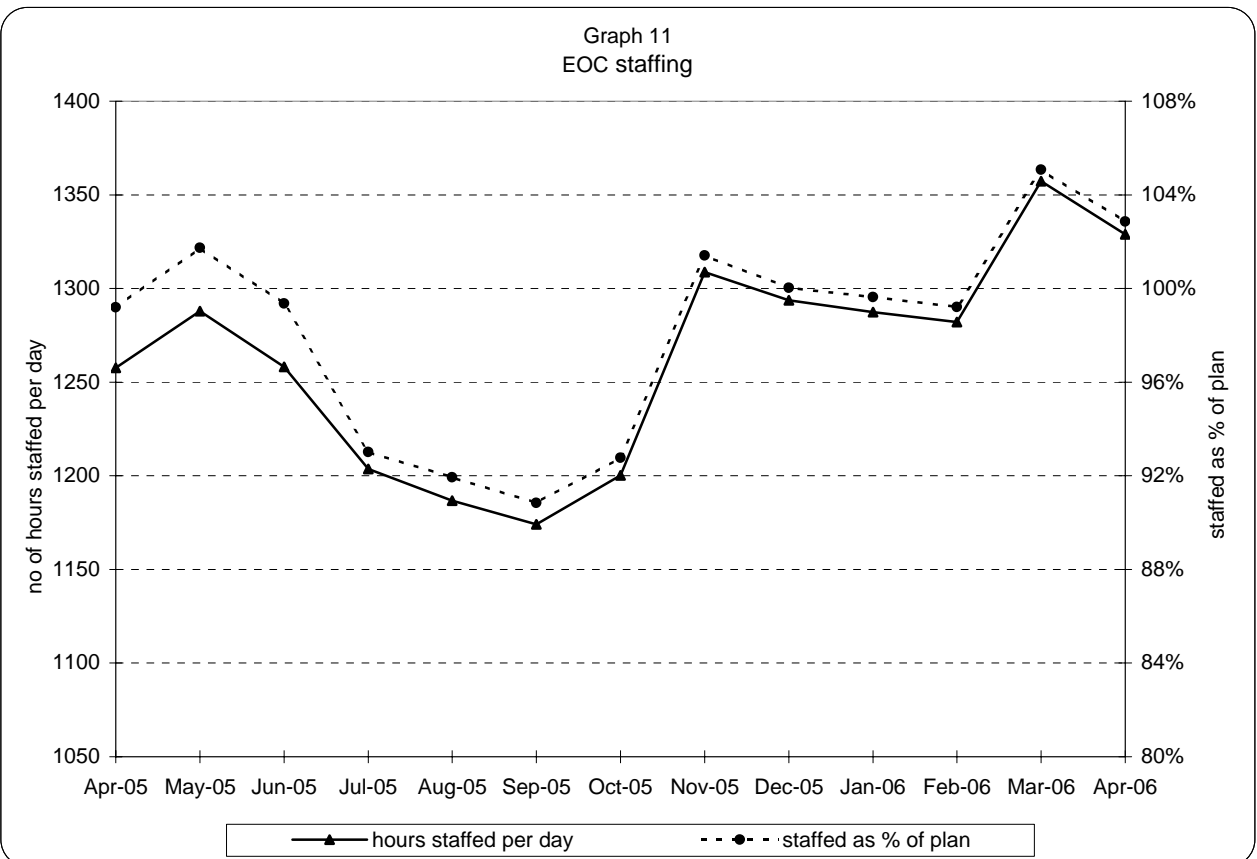
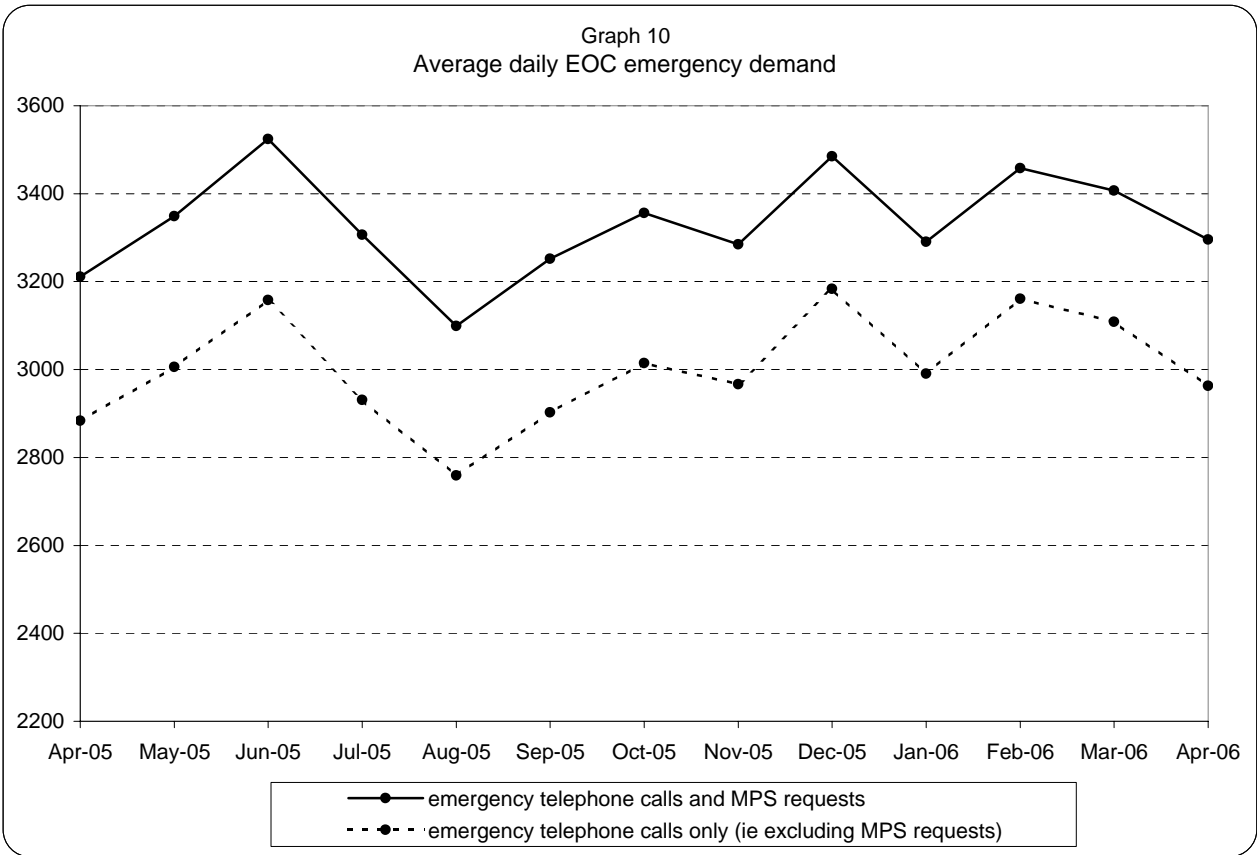
1) staffed = plan + additional - unmanned - single

**London Ambulance Service NHS Trust
Accident and Emergency Service
Yearly comparison of ambulance staffing**

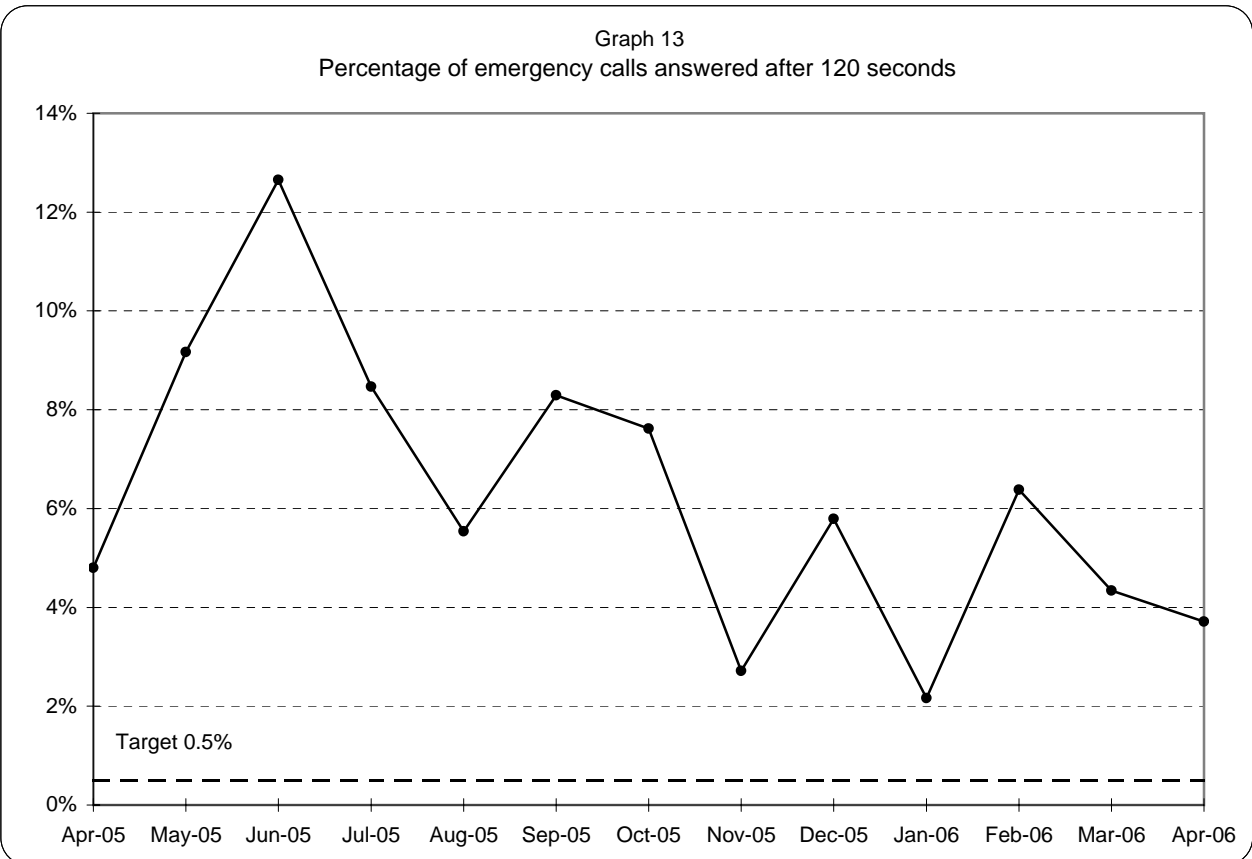
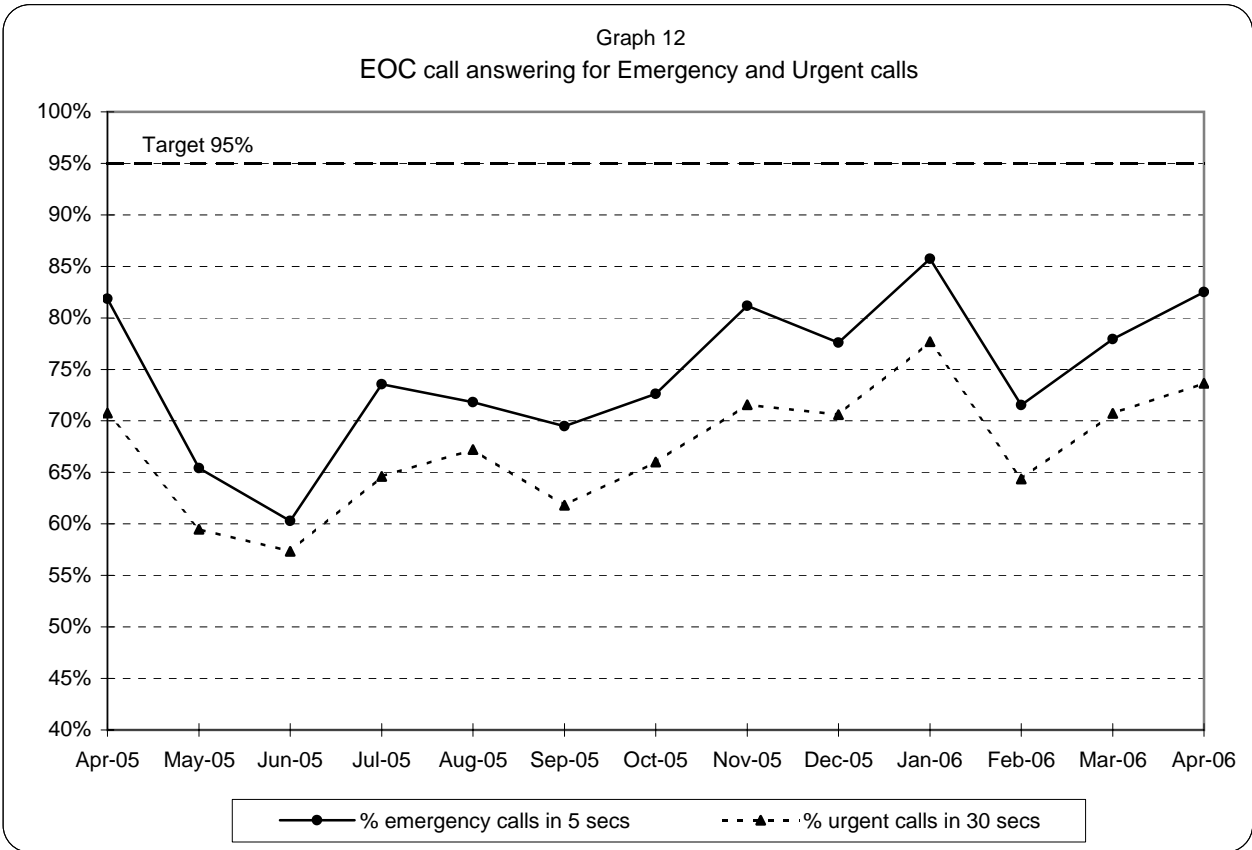


Note:staffed = plan + additional - unmanned - single

**London Ambulance Service NHS Trust
Accident and Emergency Service
EOC activity and staffing**



**London Ambulance Service NHS Trust
Accident and Emergency Service
EOC call answering performance**



Note: 95% target applies to both Emergency and Urgent call answering

London Ambulance Service NHS Trust
Accident and Emergency Service
Category A activity and performance by Primary Care Trust

Table 3

		Apr-06			Year to date		
		Cat A resp	Cat A in 8	% cat A resp in 8 mins	Cat A resp	Cat A in 8	% cat A resp in 8 mins
5K5	Brent PCT	814	616	76%	814	616	76%
5HX	Ealing PCT	953	724	76%	953	724	76%
5H1	Hammersmith & Fulham PCT	557	443	80%	557	443	80%
5K6	Harrow PCT	561	452	81%	561	452	81%
5AT	Hillingdon PCT	927	683	74%	927	683	74%
5HY	Hounslow PCT	690	537	78%	690	537	78%
5LA	Kensington & Chelsea PCT	394	306	78%	394	306	78%
5LC	Westminster PCT	1,040	841	81%	1,040	841	81%
North West London Strategic HA		5,936	4,602	78%	5,936	4,602	78%
5A9	Barnet PCT	911	631	69%	911	631	69%
5K7	Camden PCT	797	699	88%	797	699	88%
5C1	Enfield PCT	877	714	81%	877	714	81%
5C9	Haringey PCT	849	672	79%	849	672	79%
5K8	Islington PCT	736	618	84%	736	618	84%
North Central London Strategic HA		4,170	3,334	80%	4,170	3,334	80%
5C2	Barking & Dagenham PCT	664	492	74%	664	492	74%
5C3	City & Hackney PCT	908	669	74%	908	669	74%
5A4	Havering PCT	665	474	71%	665	474	71%
5C5	Newham PCT	879	588	67%	879	588	67%
5NA	Redbridge PCT	649	493	76%	649	493	76%
5C4	Tower Hamlets PCT	810	590	73%	810	590	73%
5NC	Waltham Forest PCT	782	606	77%	782	606	77%
North East London Strategic HA		5,357	3,912	73%	5,357	3,912	73%
5AX	Bexley PCT	588	450	77%	588	450	77%
5A7	Bromley PCT	755	543	72%	755	543	72%
5A8	Greenwich PCT	817	630	77%	817	630	77%
5LD	Lambeth PCT	943	741	79%	943	741	79%
5LF	Lewisham PCT	801	593	74%	801	593	74%
5LE	Southwark PCT	1,082	828	77%	1,082	828	77%
South East London Strategic HA		4,986	3,785	76%	4,986	3,785	76%
5K9	Croydon PCT	943	711	75%	943	711	75%
5A5	Kingston PCT	386	295	76%	386	295	76%
5M6	Richmond & Twickenham PCT	379	273	72%	379	273	72%
5M7	Sutton & Merton PCT	930	719	77%	930	719	77%
5LG	Wandsworth PCT	702	526	75%	702	526	75%
South West London Strategic HA		3,340	2,524	76%	3,340	2,524	76%
	Lowest (excl out of London)						67%
	Highest (excl out of London)						88%
	Range						21%