

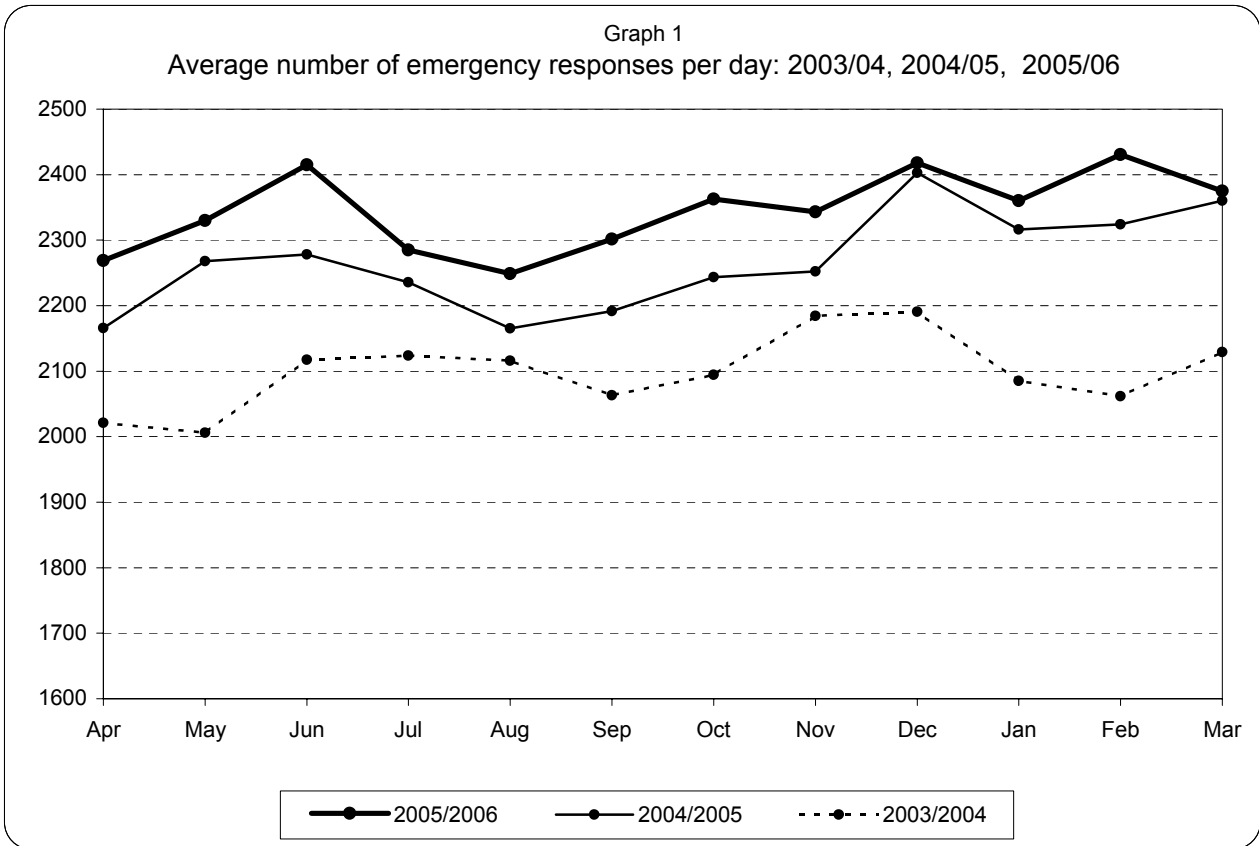


Information pack for Trust Board

March 2006

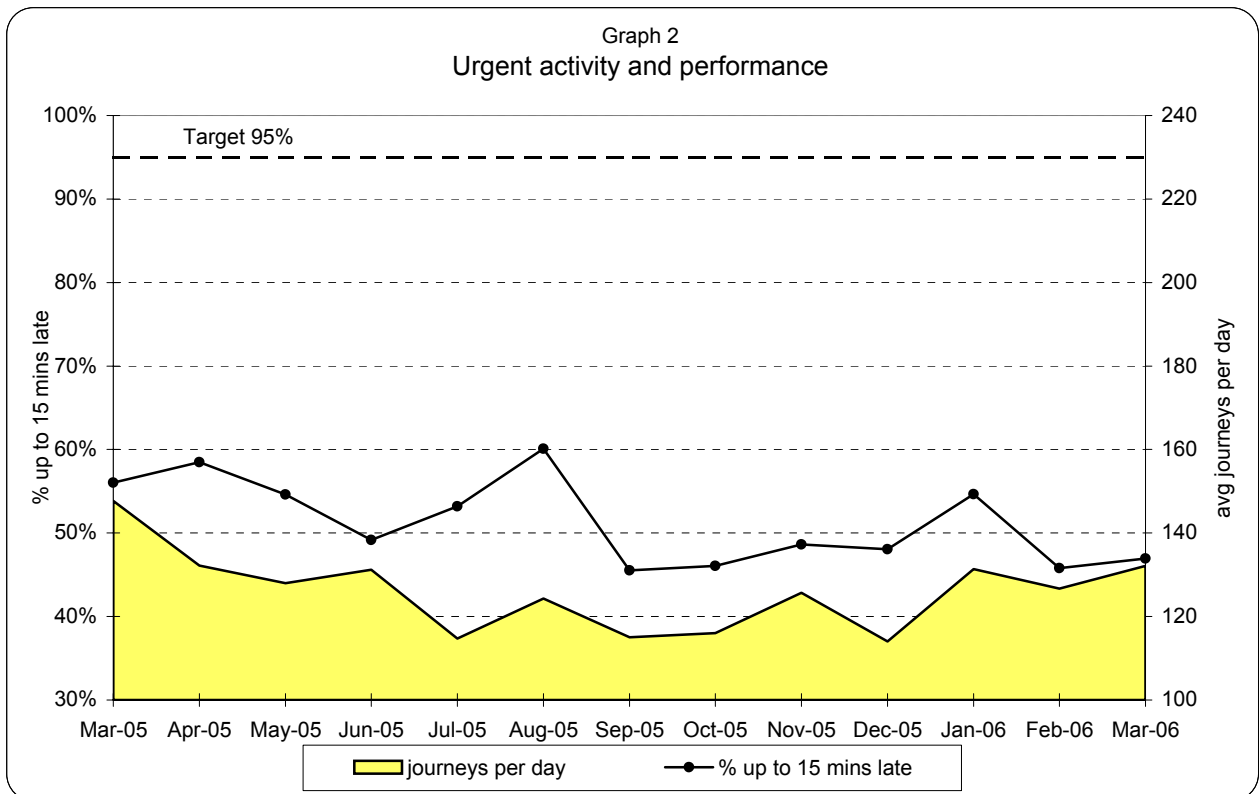
**Note: PRF data entry is up to the 8th March 2006
Staffing data entry is up to the 16th March 2006
MDT data is up to the 19th March 2006**

**London Ambulance Service NHS Trust
Accident and Emergency Service
Emergency activity and Urgent activity and performance**



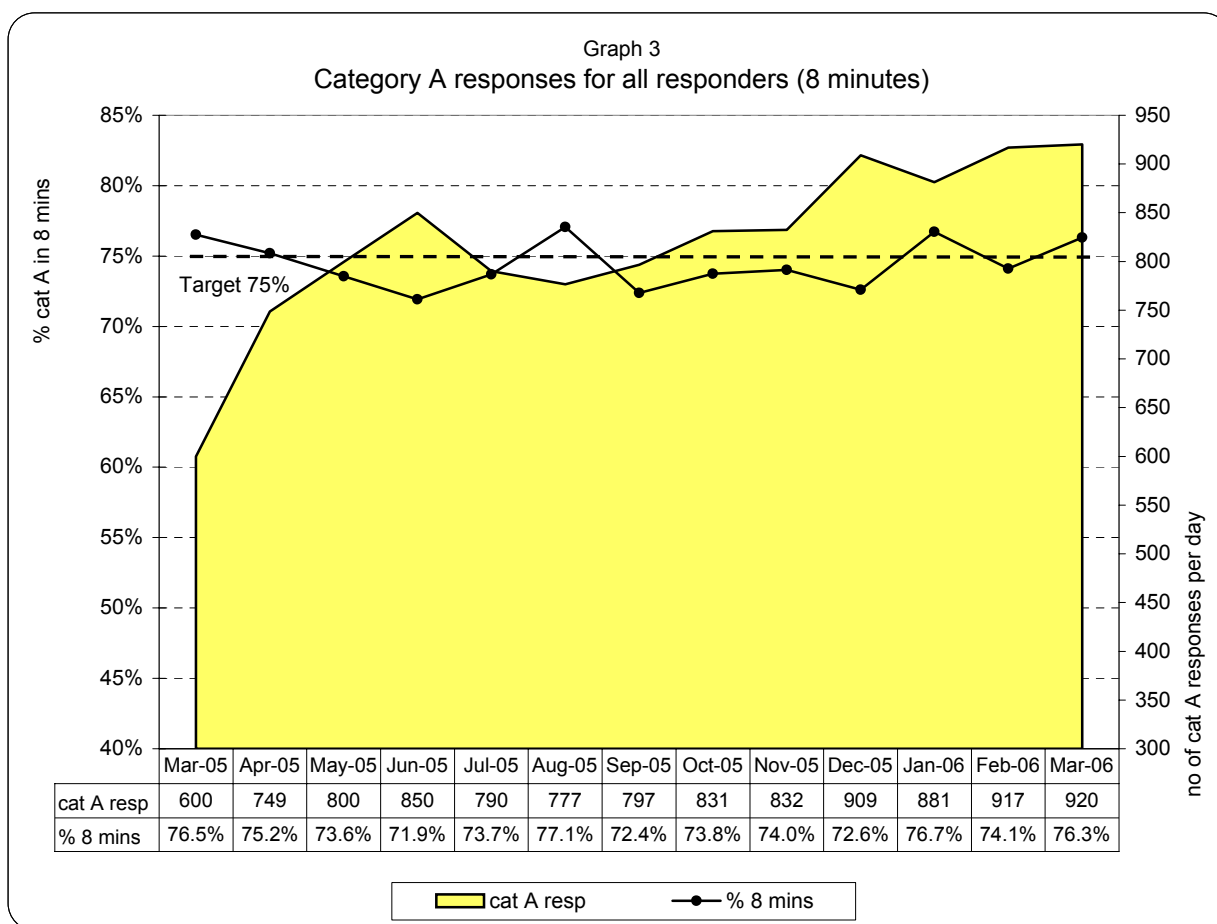
Emergency responses: monthly and year to date comparison

Feb 06 v Feb 05	Apr 05-Feb06 v Apr 04-Feb 05
+4.6%	+3.7%



Note: Urgent performance measures the arrival at hospital time against requested arrival time (target=95% of patients to arrive no more than 15 mins after time requested)

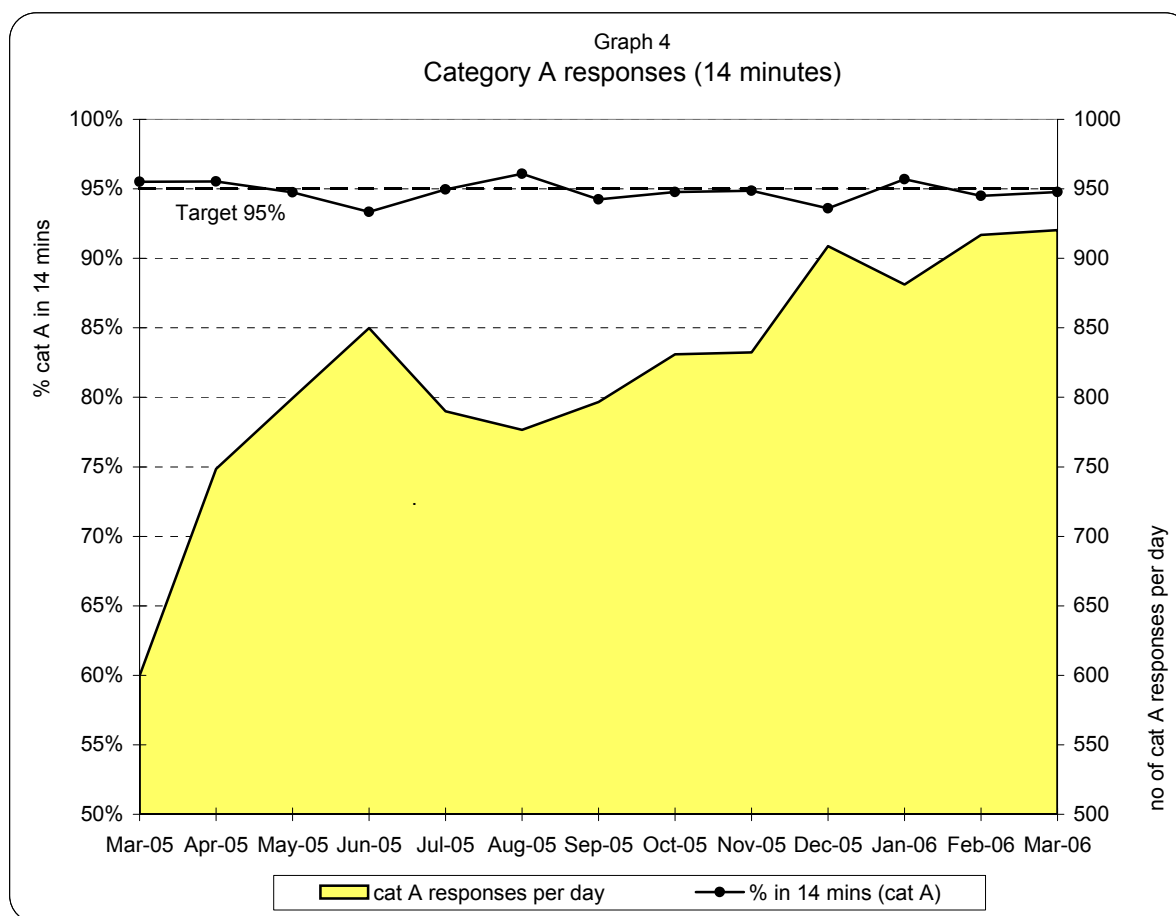
**London Ambulance Service NHS Trust
Accident and Emergency Service
Emergency responses: 8 minute response activity and performance**



**Table 1
8 minute response by Strategic Health Authority (cat A, for all responders)**

	North West London Strategic HA	North Central London Strategic HA	North East London Strategic HA	South East London Strategic HA	South West London Strategic HA	Total LAS
Apr-05	73%	75%	72%	75%	73%	75%
May-05	73%	75%	72%	75%	73%	74%
Jun-05	72%	75%	70%	75%	74%	72%
Jul-05	74%	77%	74%	76%	73%	74%
Aug-05	77%	81%	77%	80%	75%	77%
Sep-05	73%	76%	71%	75%	73%	72%
Oct-05	74%	75%	70%	77%	75%	74%
Nov-05	76%	75%	72%	75%	72%	74%
Dec-05	75%	74%	70%	73%	71%	73%
Jan-06	79%	78%	73%	78%	77%	77%
Feb-06	75%	76%	70%	75%	76%	74%
Mar-06	77%	78%	73%	77%	80%	76%
YTD	75%	76%	72%	76%	74%	75%

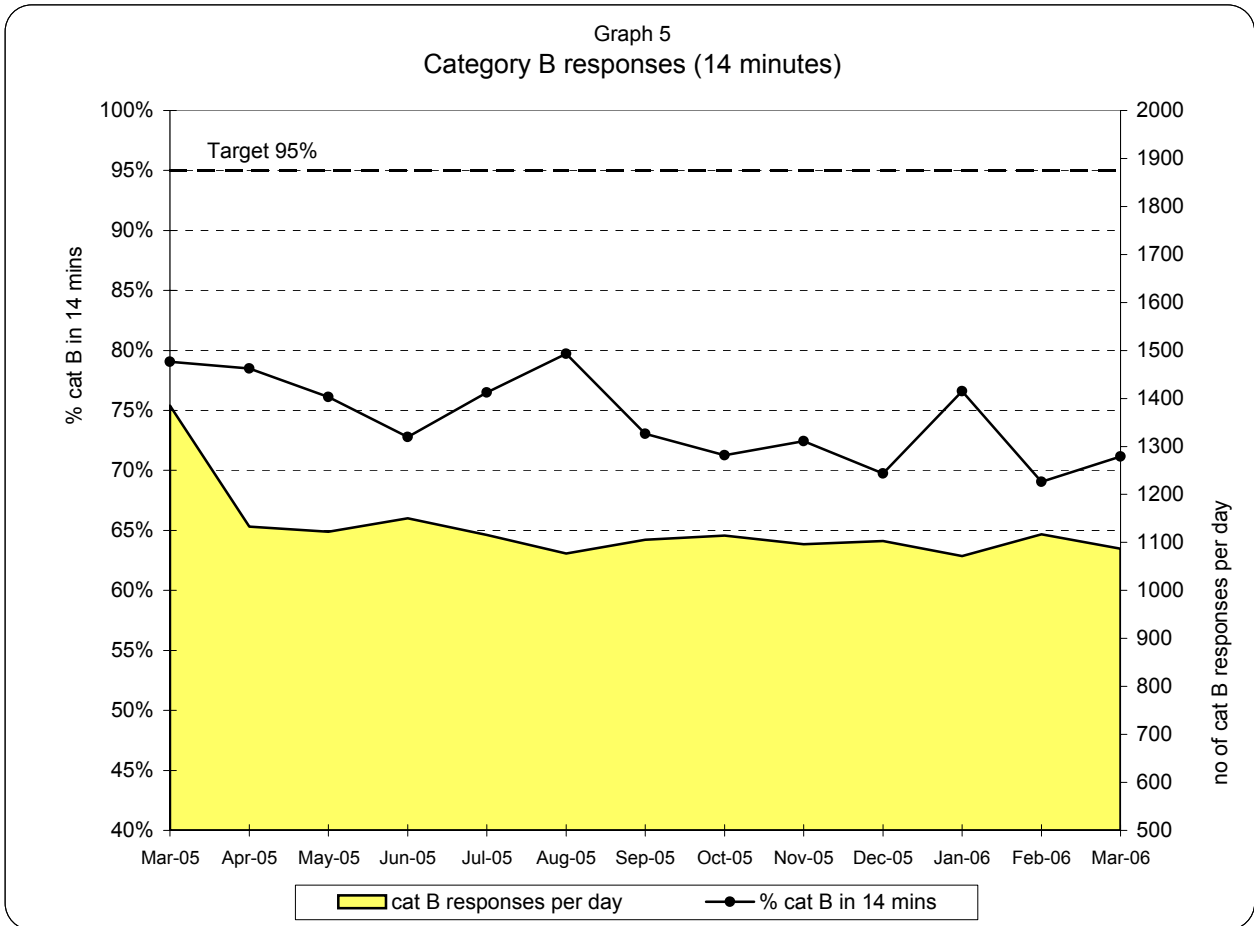
**London Ambulance Service NHS Trust
Accident and Emergency Service
Emergency responses: 14 minute response activity and performance (cat A)**



**Table 2
14 minute response by Strategic Health Authority (category A)**

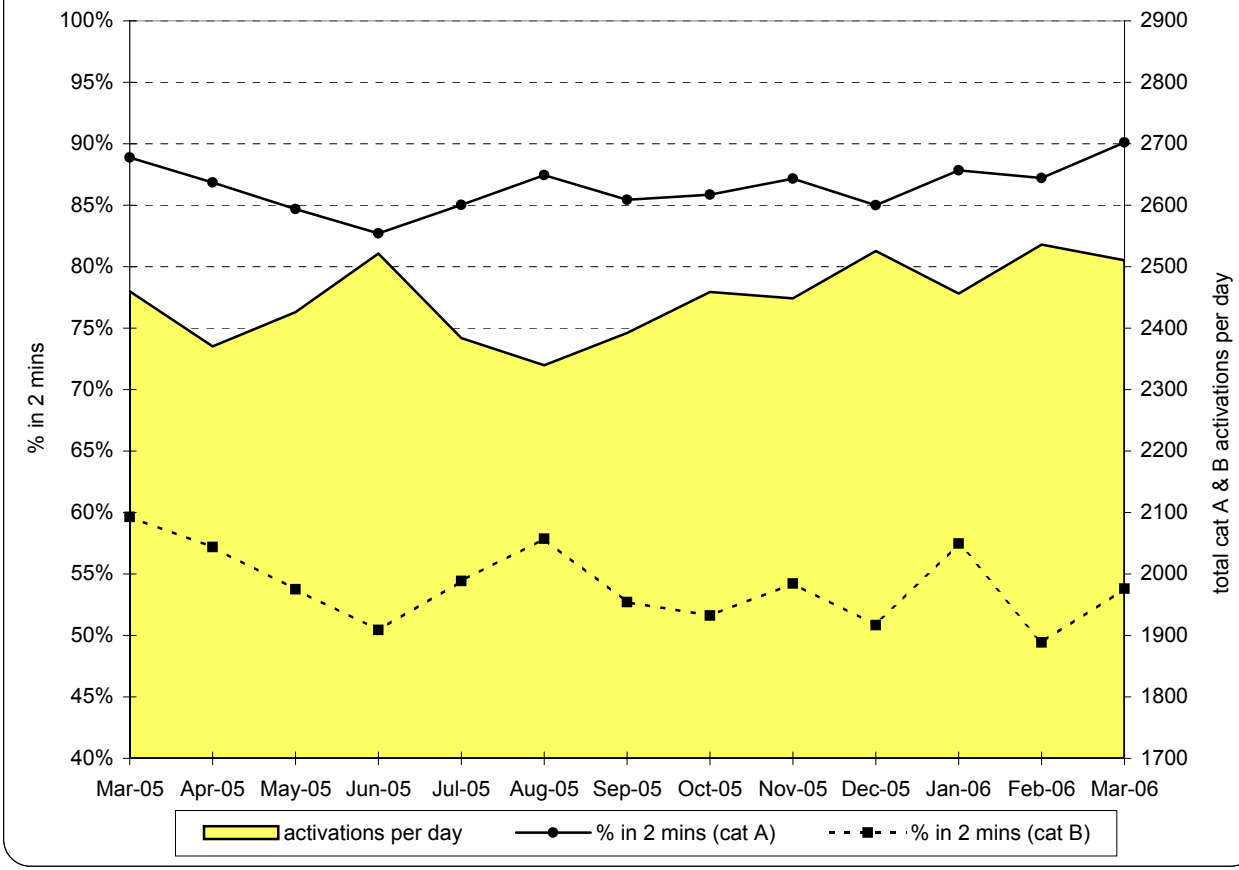
	North West London Strategic HA	North Central London Strategic HA	North East London Strategic HA	South East London Strategic HA	South West London Strategic HA	Total LAS
Apr-05	95%	95%	93%	96%	96%	96%
May-05	95%	95%	93%	96%	96%	95%
Jun-05	94%	94%	92%	95%	95%	93%
Jul-05	96%	96%	94%	96%	95%	95%
Aug-05	97%	97%	96%	97%	96%	96%
Sep-05	95%	95%	94%	95%	95%	94%
Oct-05	95%	95%	93%	96%	95%	95%
Nov-05	96%	95%	94%	95%	95%	95%
Dec-05	95%	94%	92%	93%	94%	94%
Jan-06	97%	96%	94%	96%	96%	96%
Feb-06	95%	95%	93%	95%	96%	94%
Mar-06	95%	95%	93%	95%	96%	95%
YTD	96%	95%	93%	95%	95%	95%

**London Ambulance Service NHS Trust
Accident and Emergency Service
Emergency responses: 14 minute response activity and performance (cat B)**

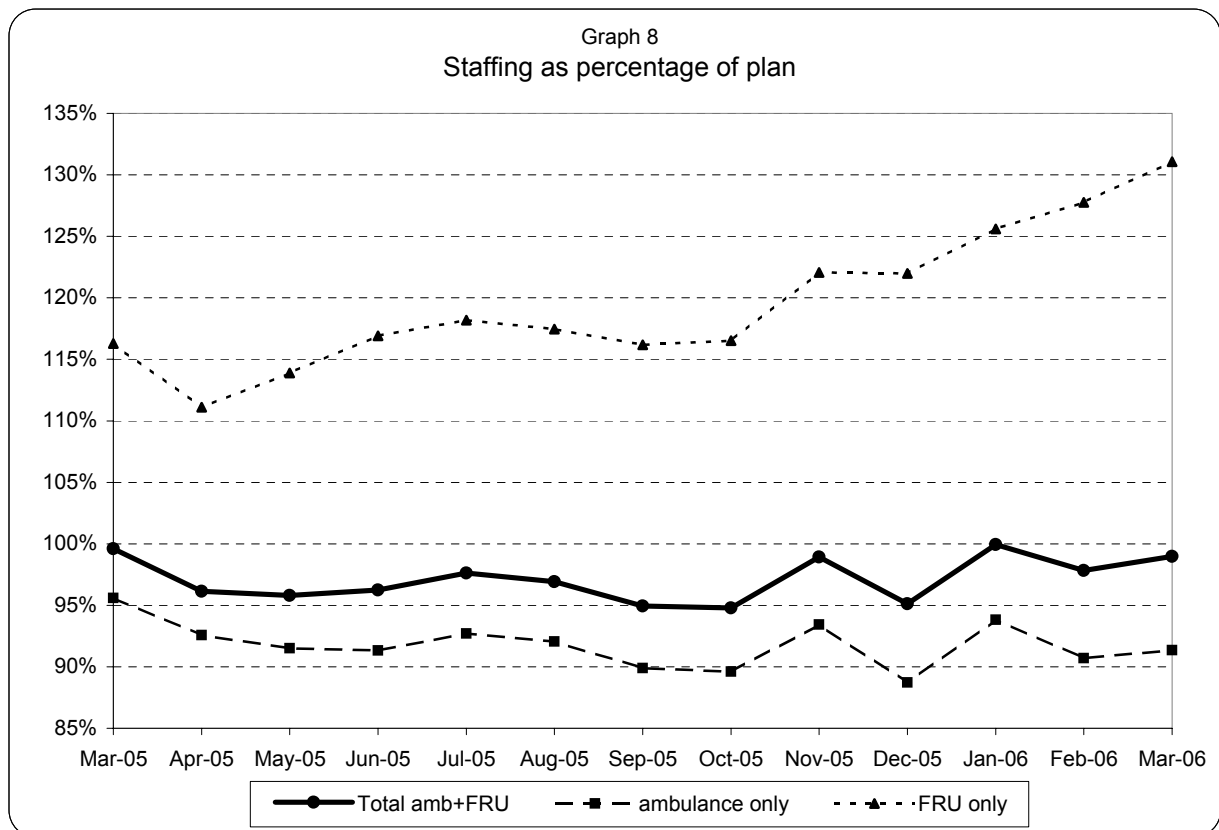
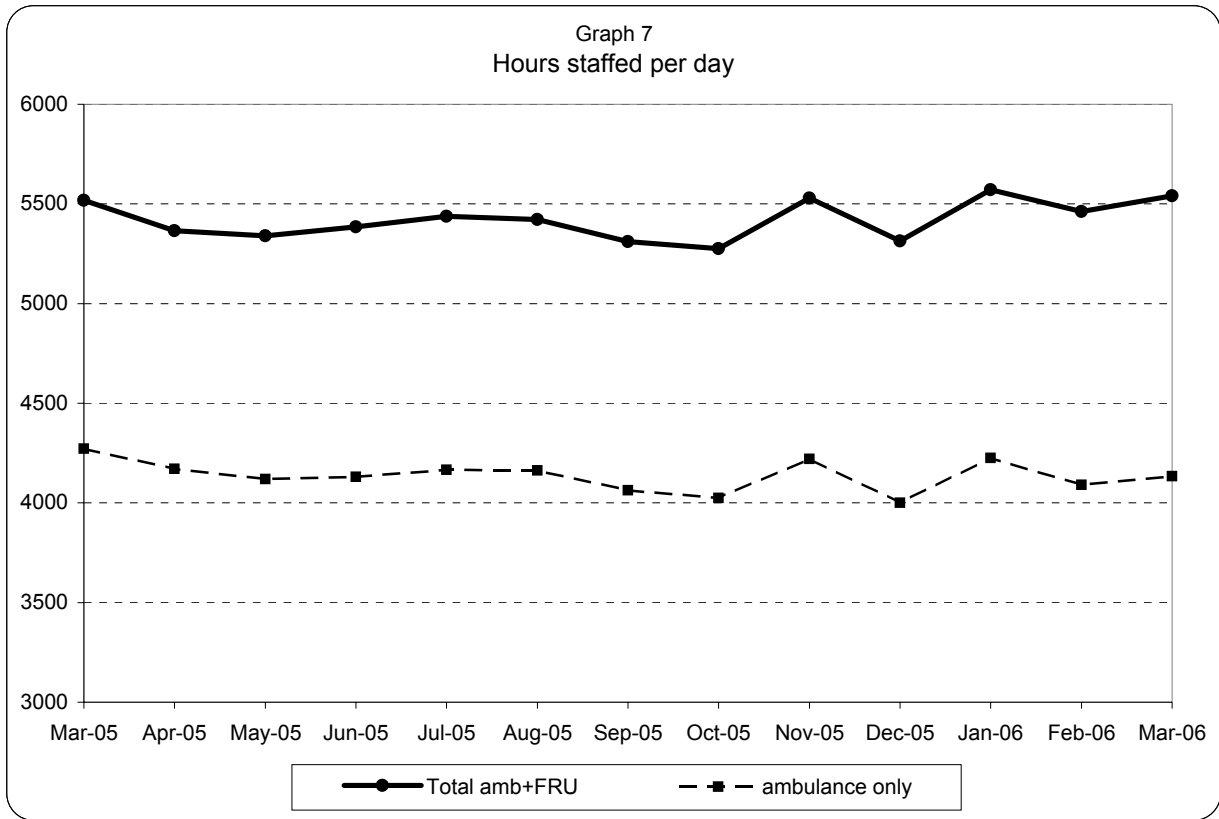


**London Ambulance Service NHS Trust
Accident and Emergency Service
Emergency activations: activity and performance**

Graph 6
Category A and B activations



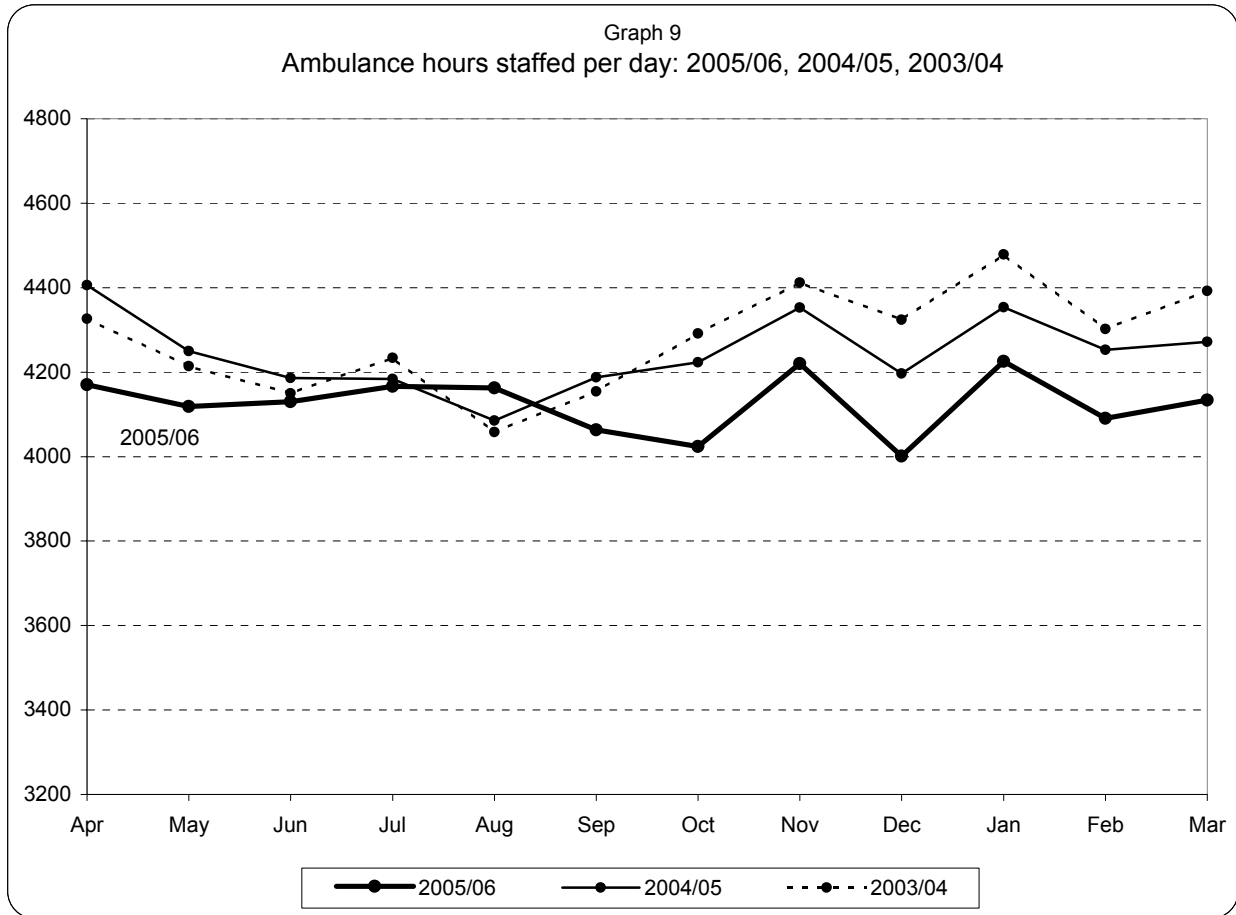
**London Ambulance Service NHS Trust
Accident and Emergency Service
Ambulance and FRU staffing**



Note:

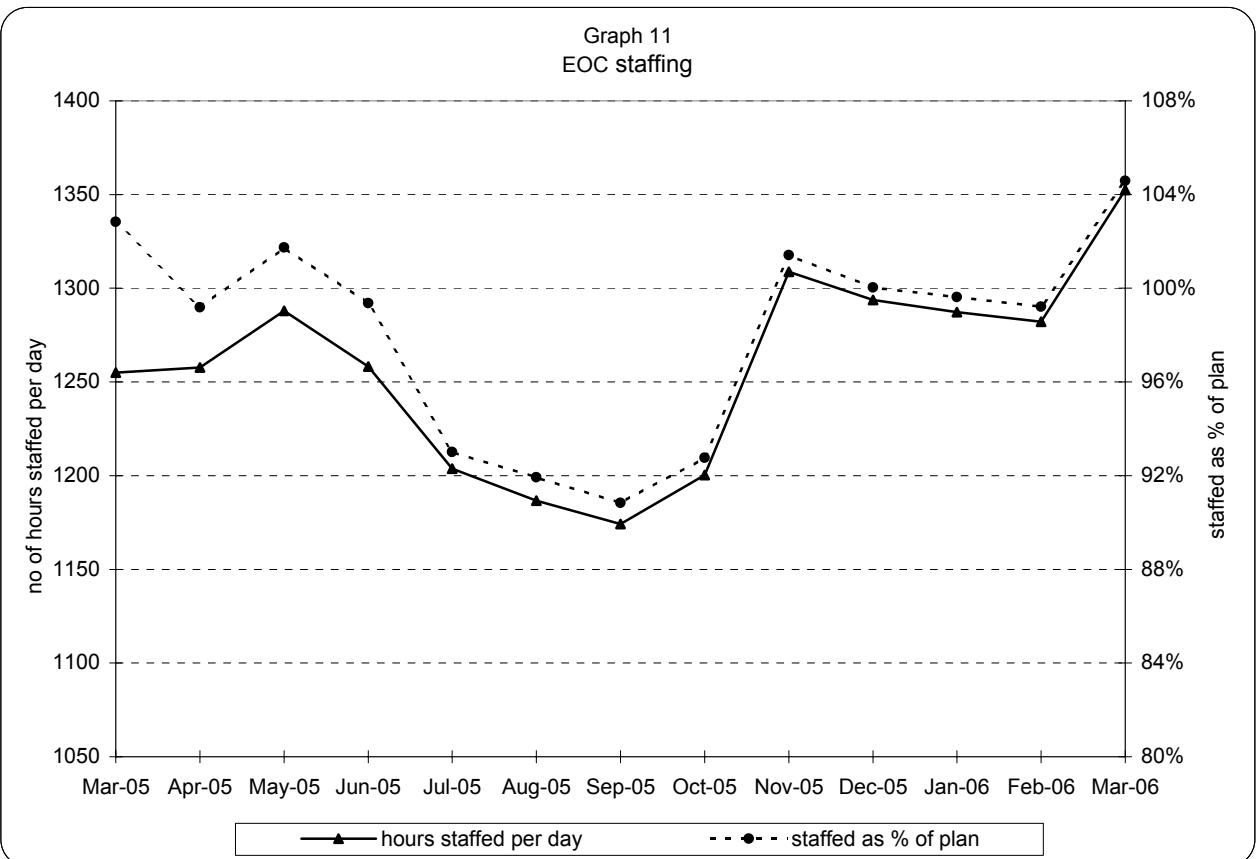
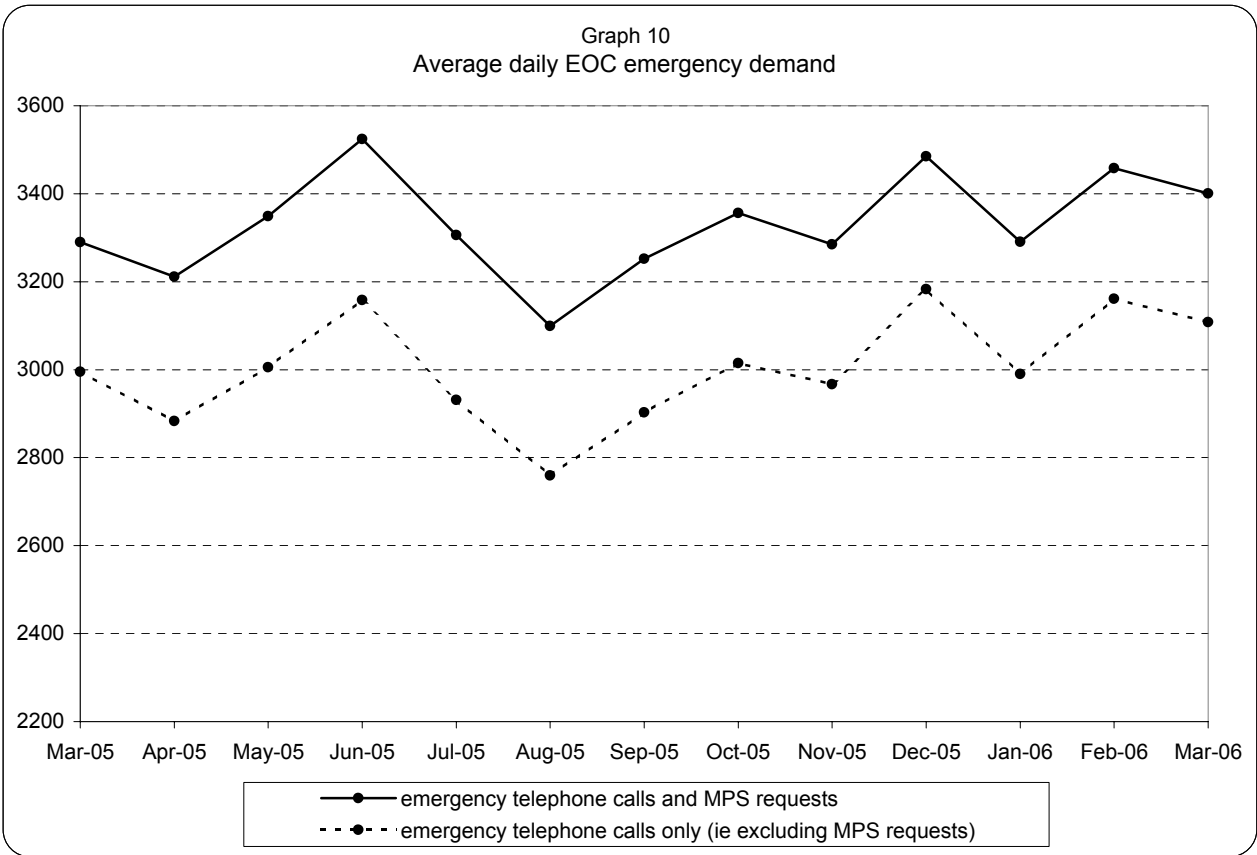
1) staffed = plan + additional - unmanned - single

**London Ambulance Service NHS Trust
Accident and Emergency Service
Yearly comparison of ambulance staffing**

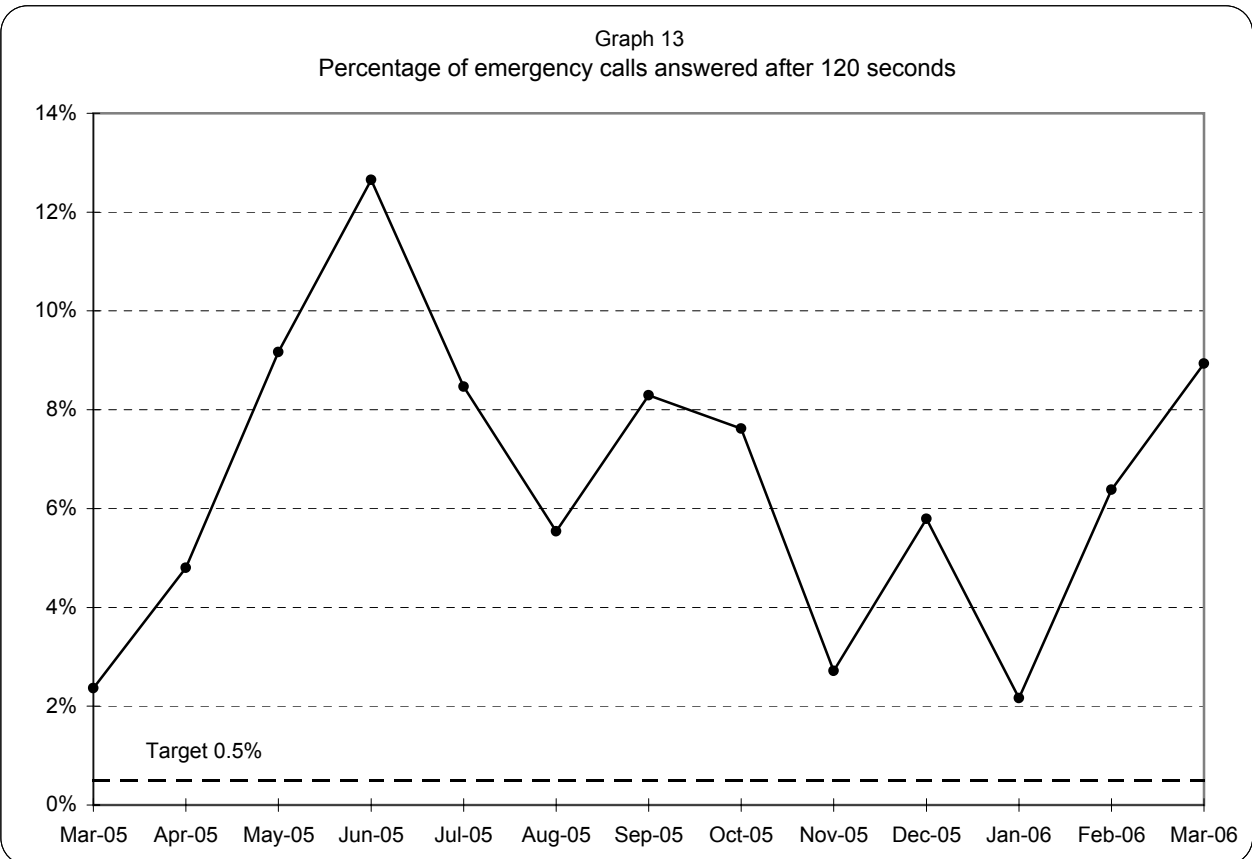
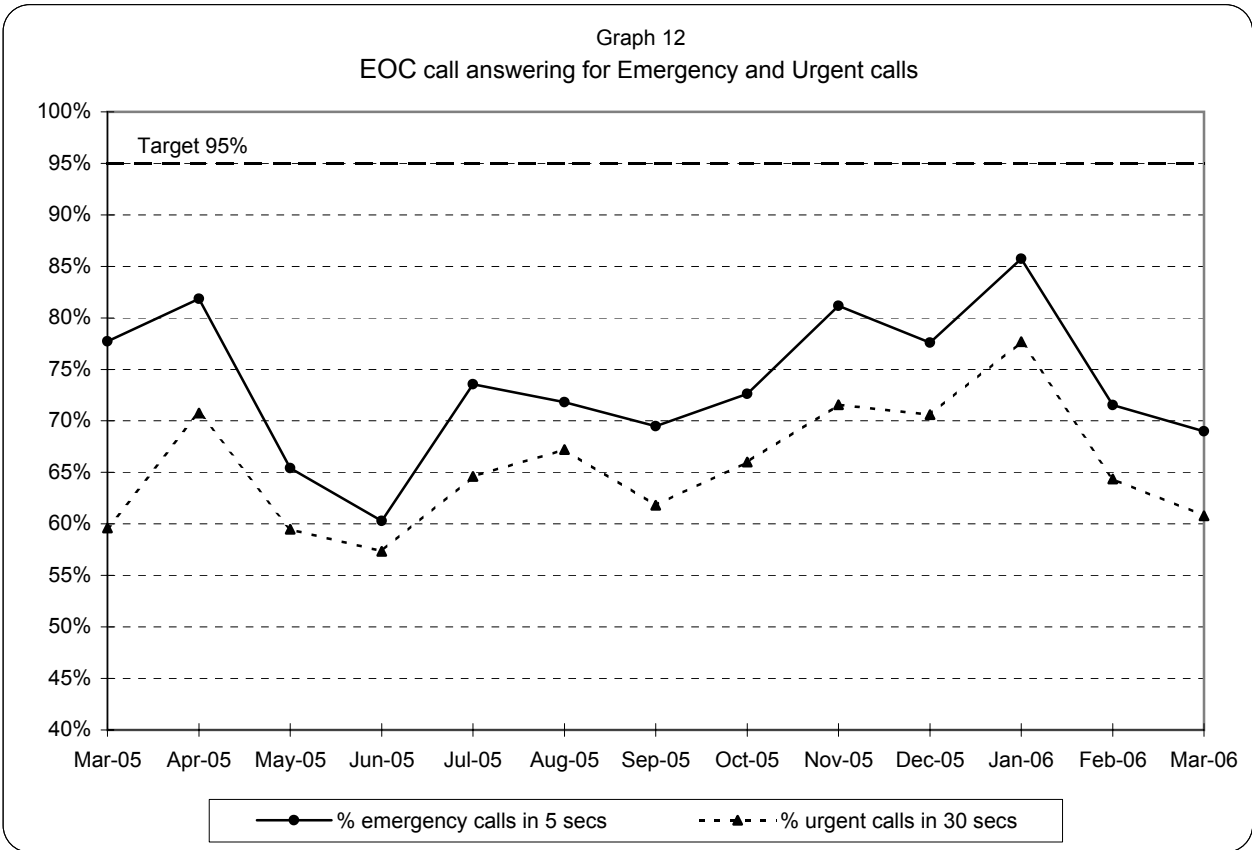


Note:staffed = plan + additional - unmanned - single

**London Ambulance Service NHS Trust
Accident and Emergency Service
EOC activity and staffing**



**London Ambulance Service NHS Trust
Accident and Emergency Service
CAC call answering performance**



Note: 95% target applies to both Emergency and Urgent call answering

London Ambulance Service NHS Trust
Accident and Emergency Service
Category A activity and performance by Primary Care Trust

Table 3

		2005/06	
		Cat A resp	% cat A resp in 8 mins
5K5	Brent PCT	11,187	71%
5HX	Ealing PCT	11,877	71%
5H1	Hammersmith & Fulham PCT	6,823	81%
5K6	Harrow PCT	7,120	80%
5AT	Hillingdon PCT	10,562	73%
5HY	Hounslow PCT	8,561	76%
5LA	Kensington & Chelsea PCT	5,394	76%
5LC	Westminster PCT	13,235	78%
North West London Strategic HA		74,759	75%
5A9	Barnet PCT	10,543	68%
5K7	Camden PCT	10,069	85%
5C1	Enfield PCT	10,723	75%
5C9	Haringey PCT	10,283	74%
5K8	Islington PCT	8,938	81%
North Central London Strategic HA		50,556	76%
5C2	Barking & Dagenham PCT	7,898	71%
5C3	City & Hackney PCT	11,072	71%
5A4	Havering PCT	7,540	70%
5C5	Newham PCT	11,733	72%
5NA	Redbridge PCT	8,551	74%
5C4	Tower Hamlets PCT	10,177	71%
5NC	Waltham Forest PCT	8,916	75%
North East London Strategic HA		65,887	72%
5AX	Bexley PCT	7,025	78%
5A7	Bromley PCT	9,284	74%
5A8	Greenwich PCT	9,914	75%
5LD	Lambeth PCT	12,639	74%
5LF	Lewisham PCT	10,116	75%
5LE	Southwark PCT	12,618	79%
South East London Strategic HA		61,596	76%
5K9	Croydon PCT	12,340	70%
5A5	Kingston PCT	4,591	76%
5M6	Richmond & Twickenham PCT	4,945	72%
5M7	Sutton & Merton PCT	10,982	79%
5LG	Wandsworth PCT	9,262	75%
South West London Strategic HA		42,120	74%
	Lowest (excl out of London)		68%
	Highest (excl out of London)		85%
	Range		17%