



London Ambulance Service  
NHS Trust

# Information Pack for Trust Board

## June 2006

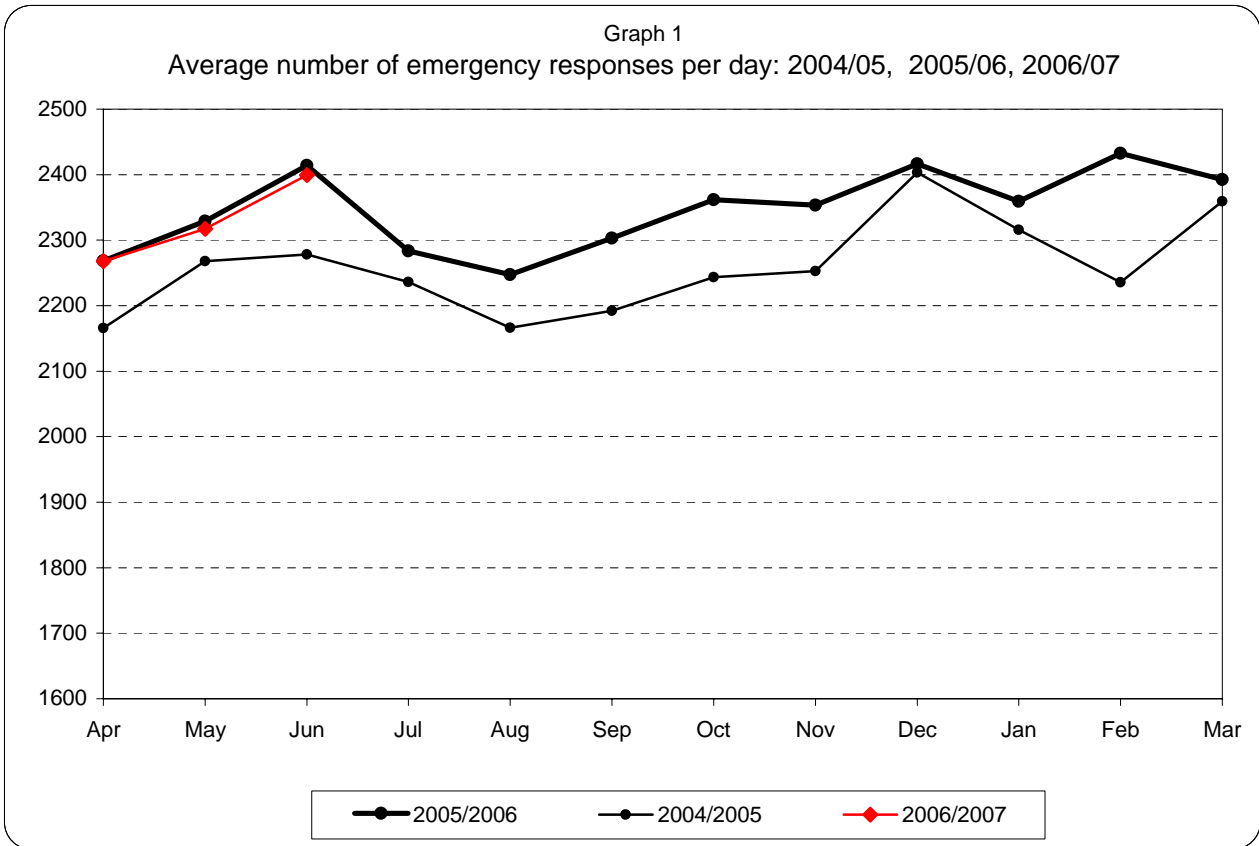
---

Please note:

PRF data entry is up to the 25th June 06

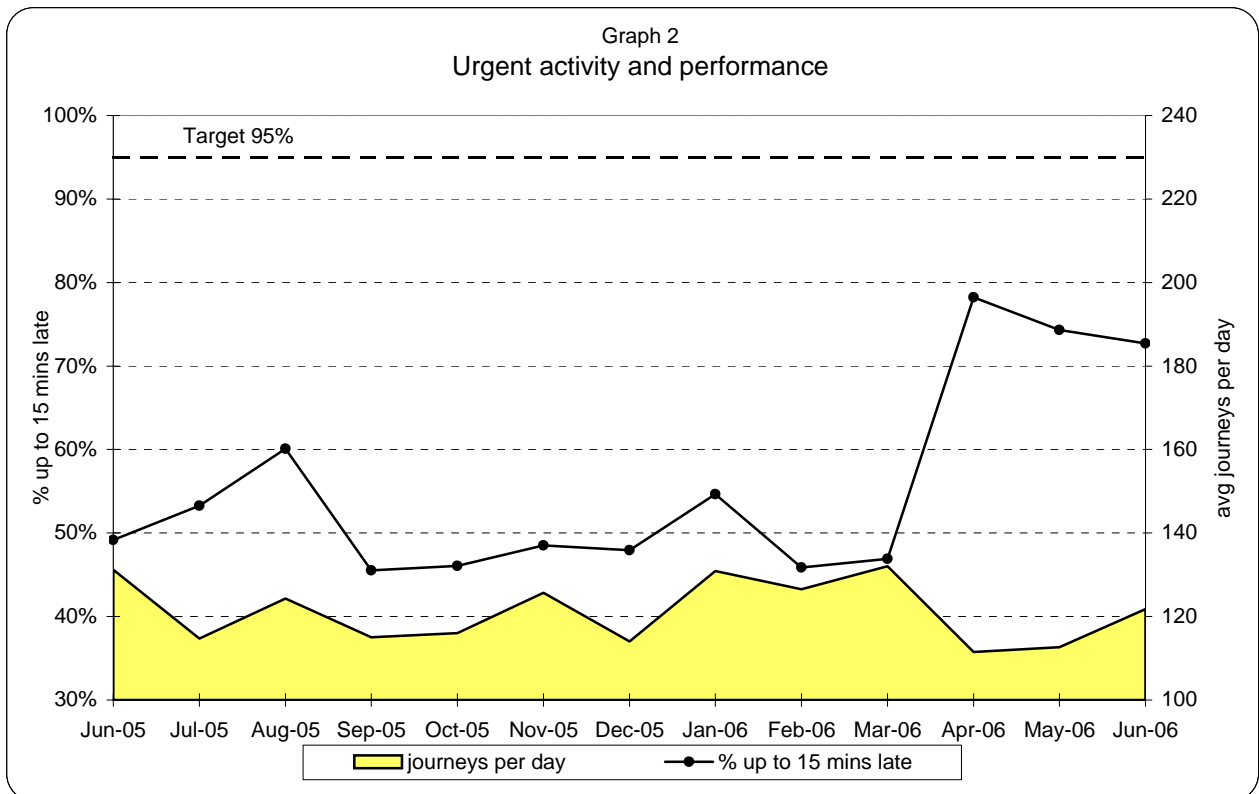
---

**London Ambulance Service NHS Trust  
Accident and Emergency Service  
Emergency activity and Urgent activity and performance**

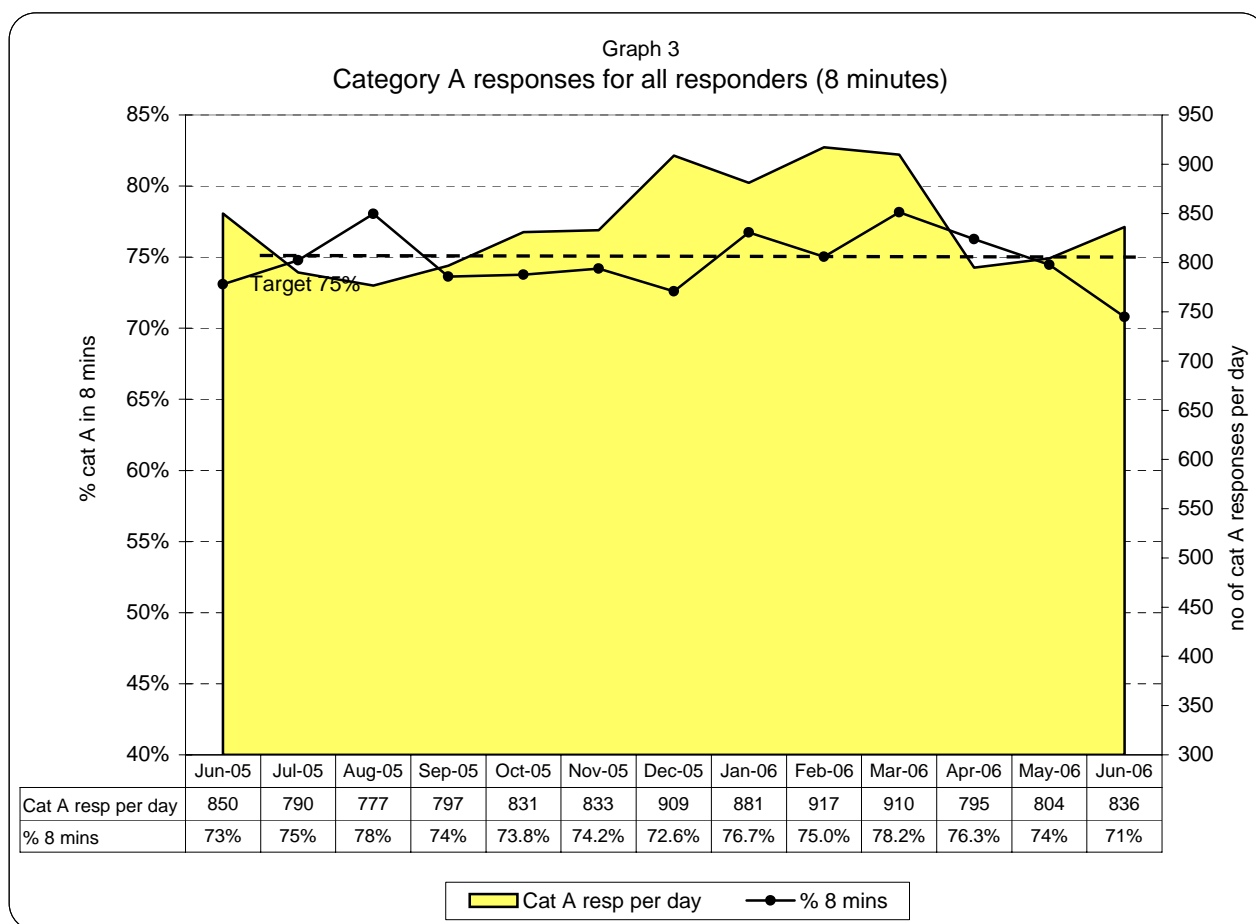


**Emergency responses: monthly and year to date comparison**

June 06 v June 05	Apr 06-Jun 06 v Apr 05-Jun 05
-0.6%	-0.4%



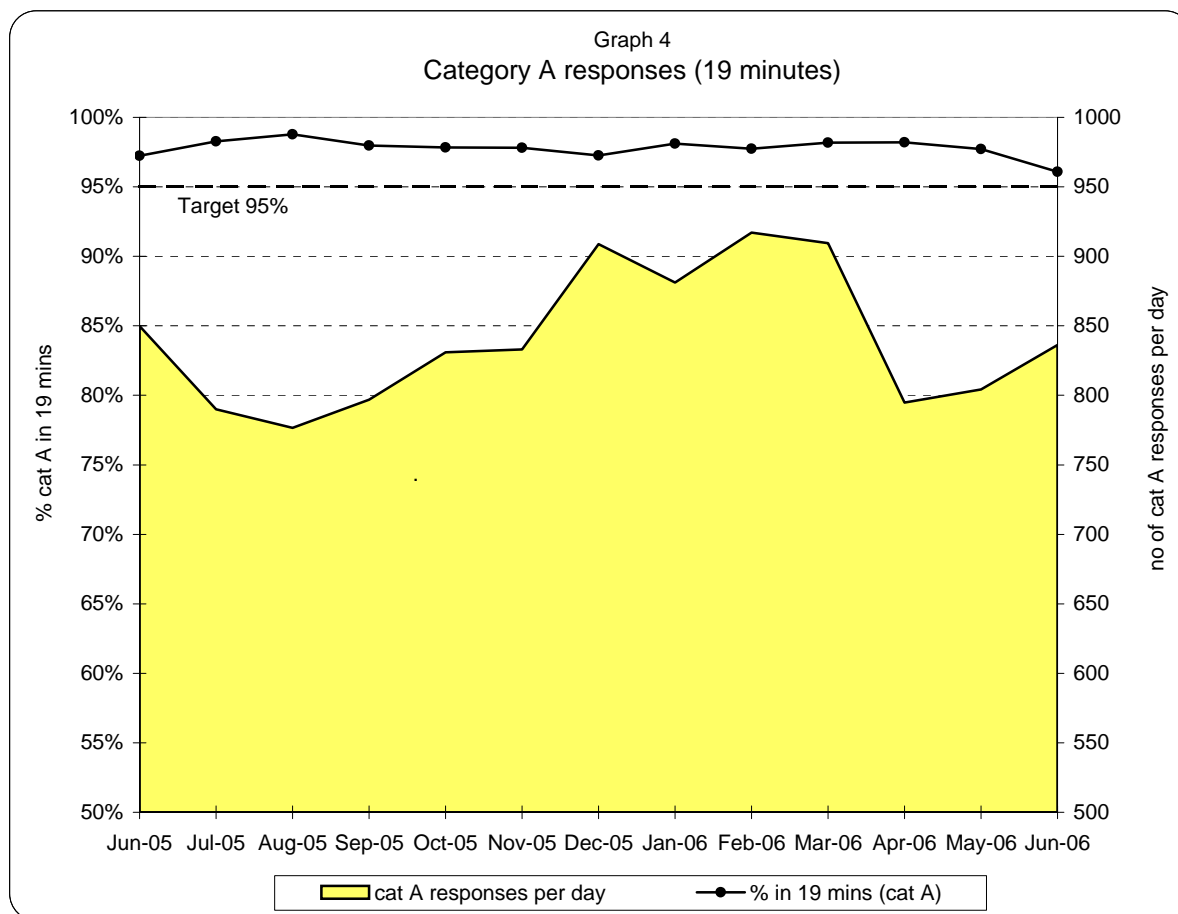
**London Ambulance Service NHS Trust  
Accident and Emergency Service  
Emergency responses: 8 minute response activity and performance**



**Table 1  
8 minute response by Strategic Health Authority (cat A, for all responders)**

	North West London Strategic HA	North Central London Strategic HA	North East London Strategic HA	South East London Strategic HA	South West London Strategic HA	Total LAS
Apr-06	78%	80%	73%	76%	76%	<b>76%</b>
May-06	76%	77%	71%	74%	75%	<b>74%</b>
Jun-06	71%	74%	68%	71%	71%	<b>71%</b>
Jul-06						
Aug-06						
Sep-06						
Oct-06						
Nov-06						
Dec-06						
Jan-07						
Feb-07						
Mar-07						
YTD	<b>75%</b>	<b>77%</b>	<b>71%</b>	<b>74%</b>	<b>74%</b>	<b>74%</b>

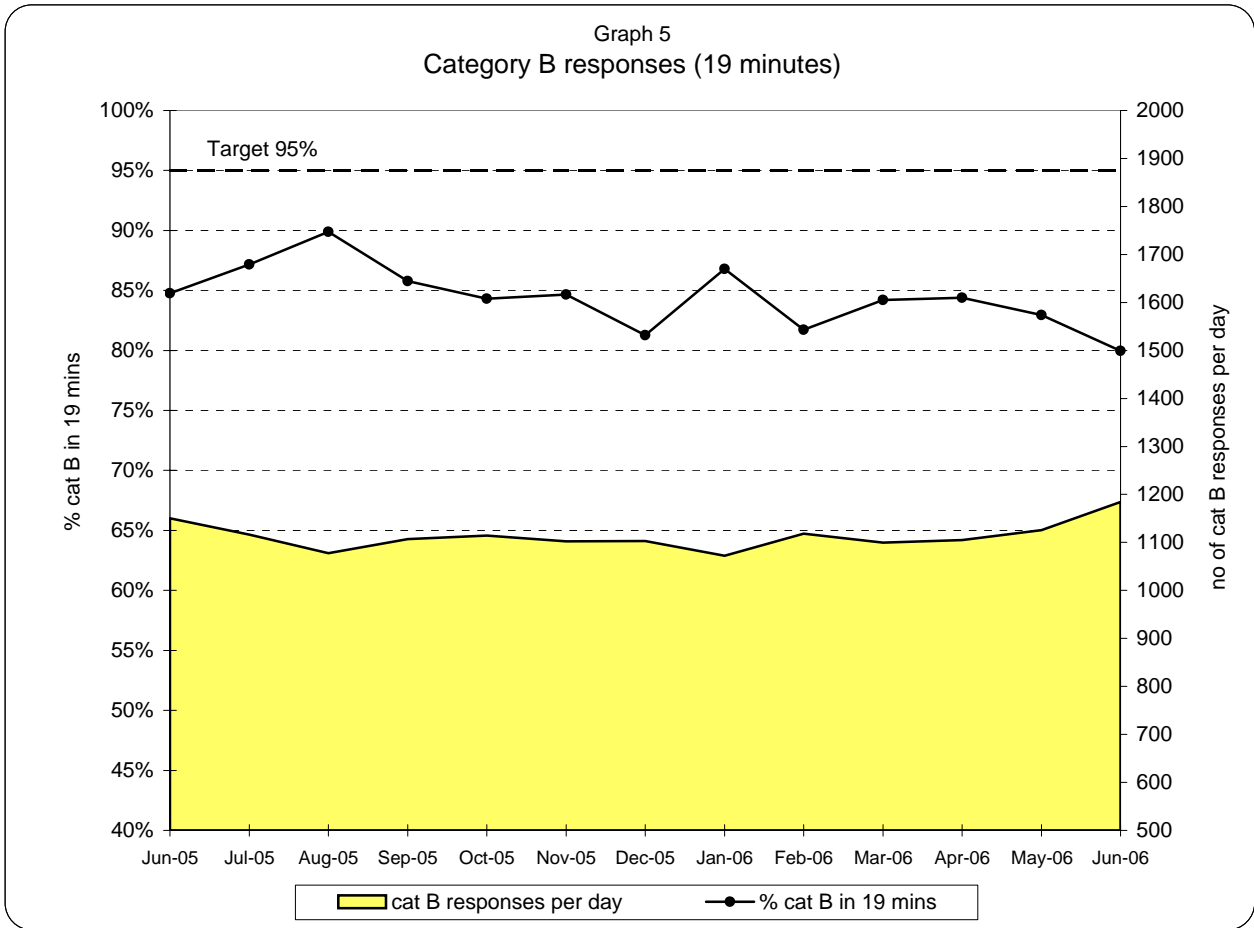
**London Ambulance Service NHS Trust  
Accident and Emergency Service  
Emergency responses: 19 minute response activity and performance (cat A)**



**Table 2  
19 minute response by Strategic Health Authority (category A)**

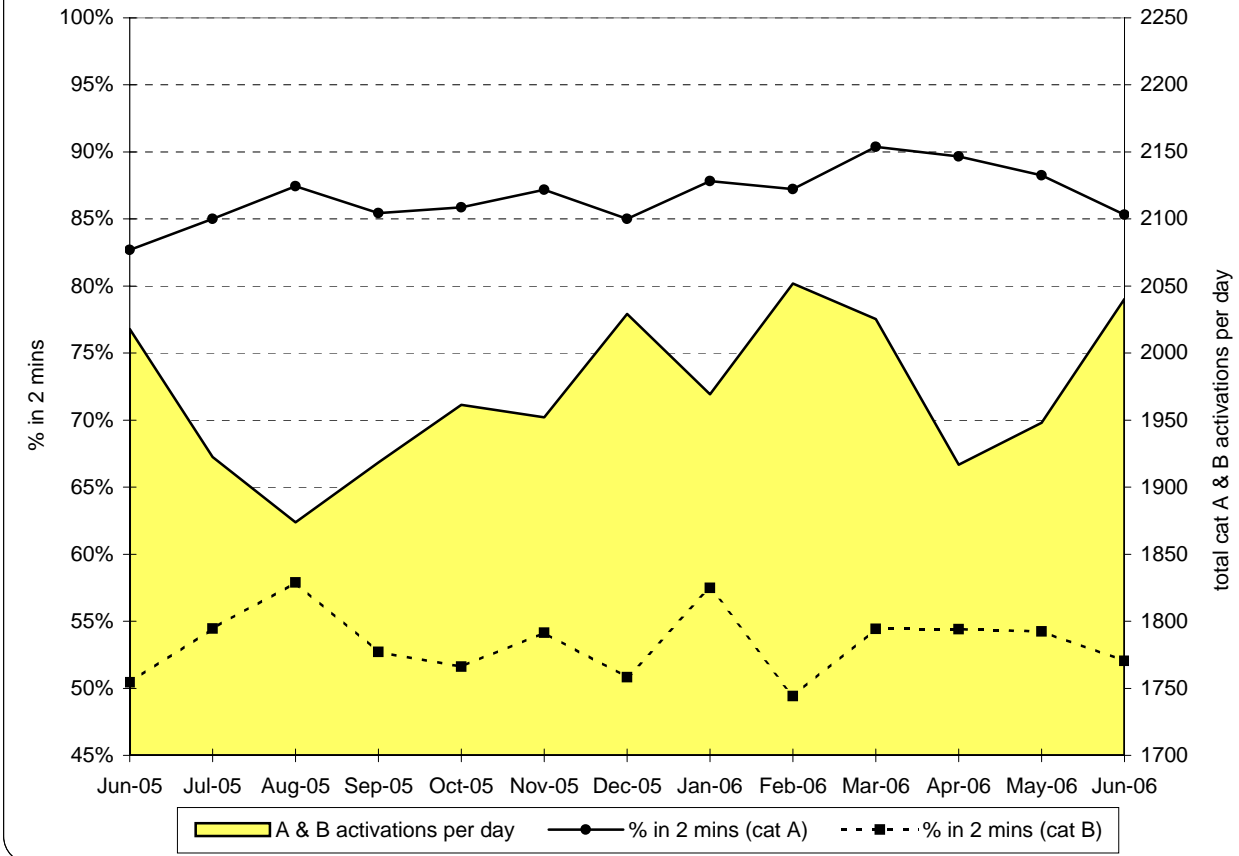
	North West London Strategic HA	North Central London Strategic HA	North East London Strategic HA	South East London Strategic HA	South West London Strategic HA	Total LAS
Apr-06	99%	99%	97%	98%	99%	98%
May-06	98%	98%	97%	98%	99%	98%
Jun-06	97%	97%	95%	96%	96%	96%
Jul-06						
Aug-06						
Sep-06						
Oct-06						
Nov-06						
Dec-06						
Jan-07						
Feb-07						
Mar-07						
YTD	98%	98%	96%	97%	98%	97%

**London Ambulance Service NHS Trust  
Accident and Emergency Service  
Emergency responses: 19 minute response activity and performance (cat B)**

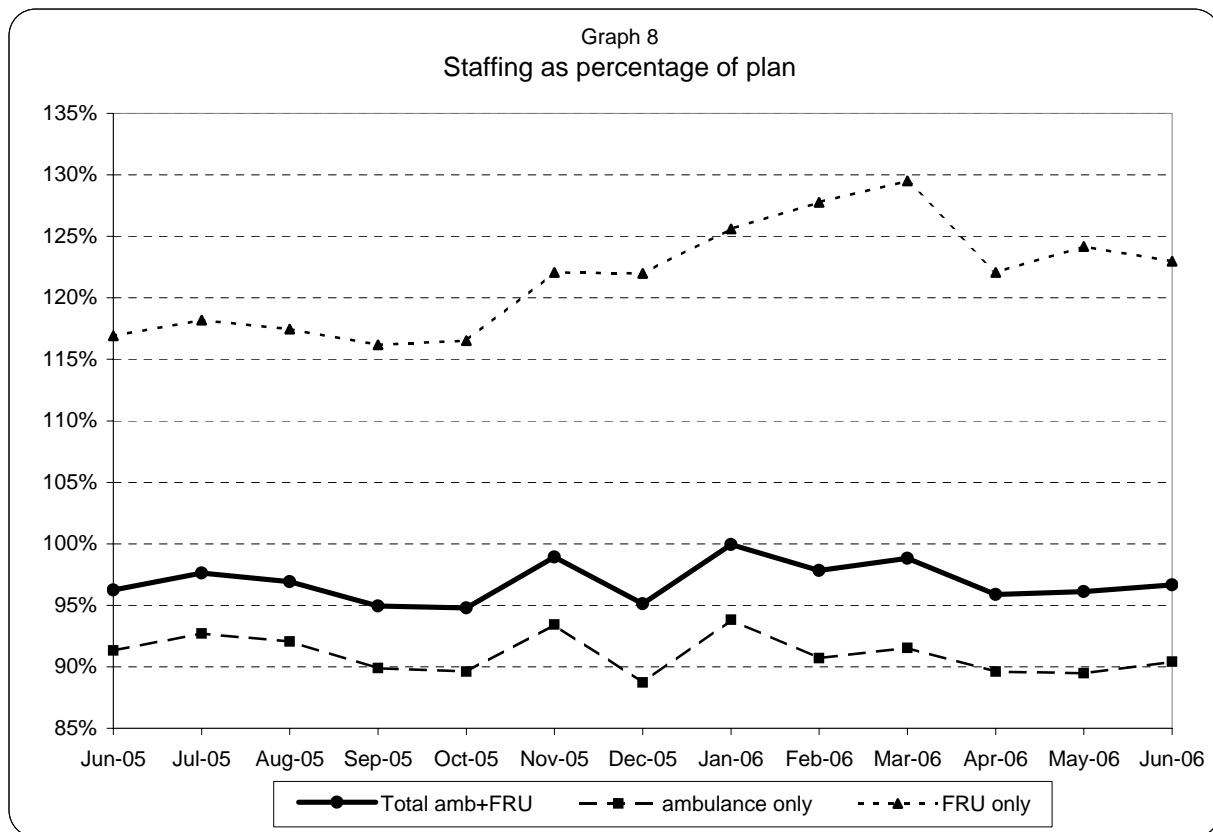
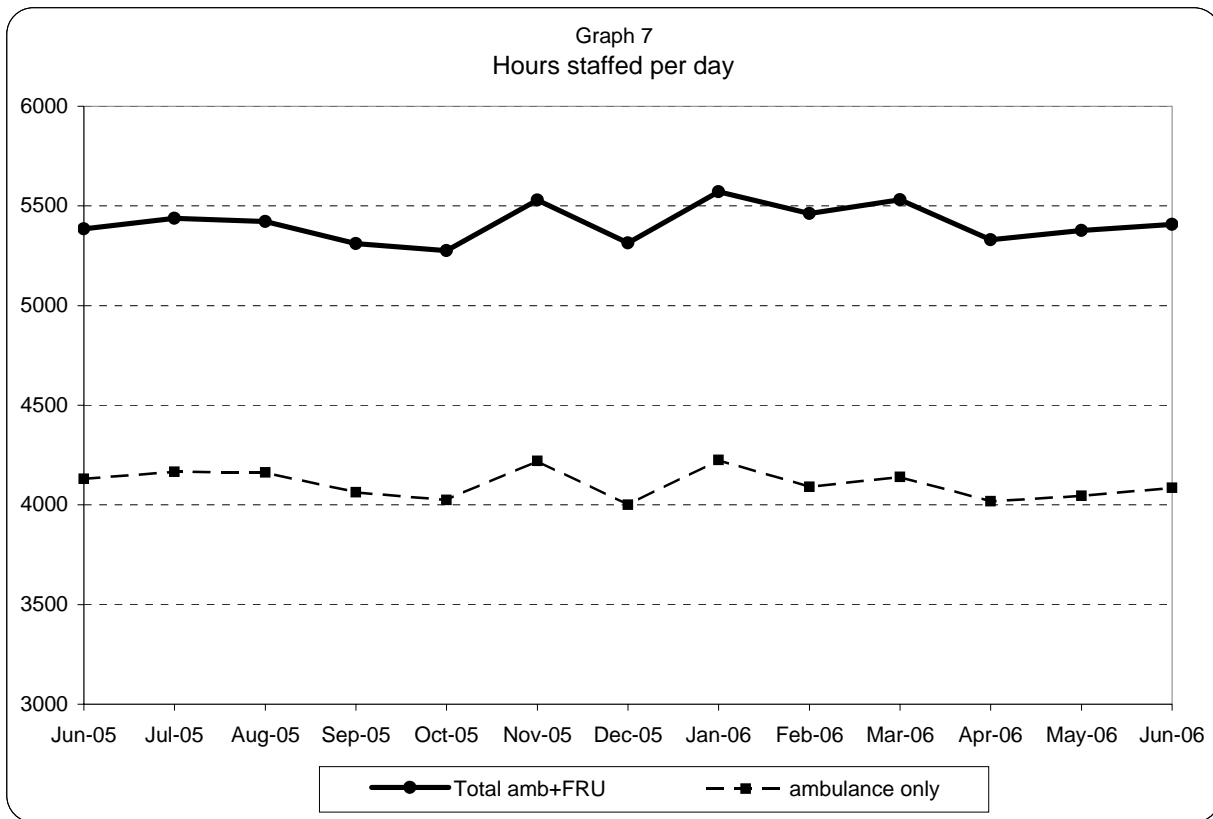


**London Ambulance Service NHS Trust  
Accident and Emergency Service  
Emergency activations: activity and performance**

Graph 6  
Category A and B activations



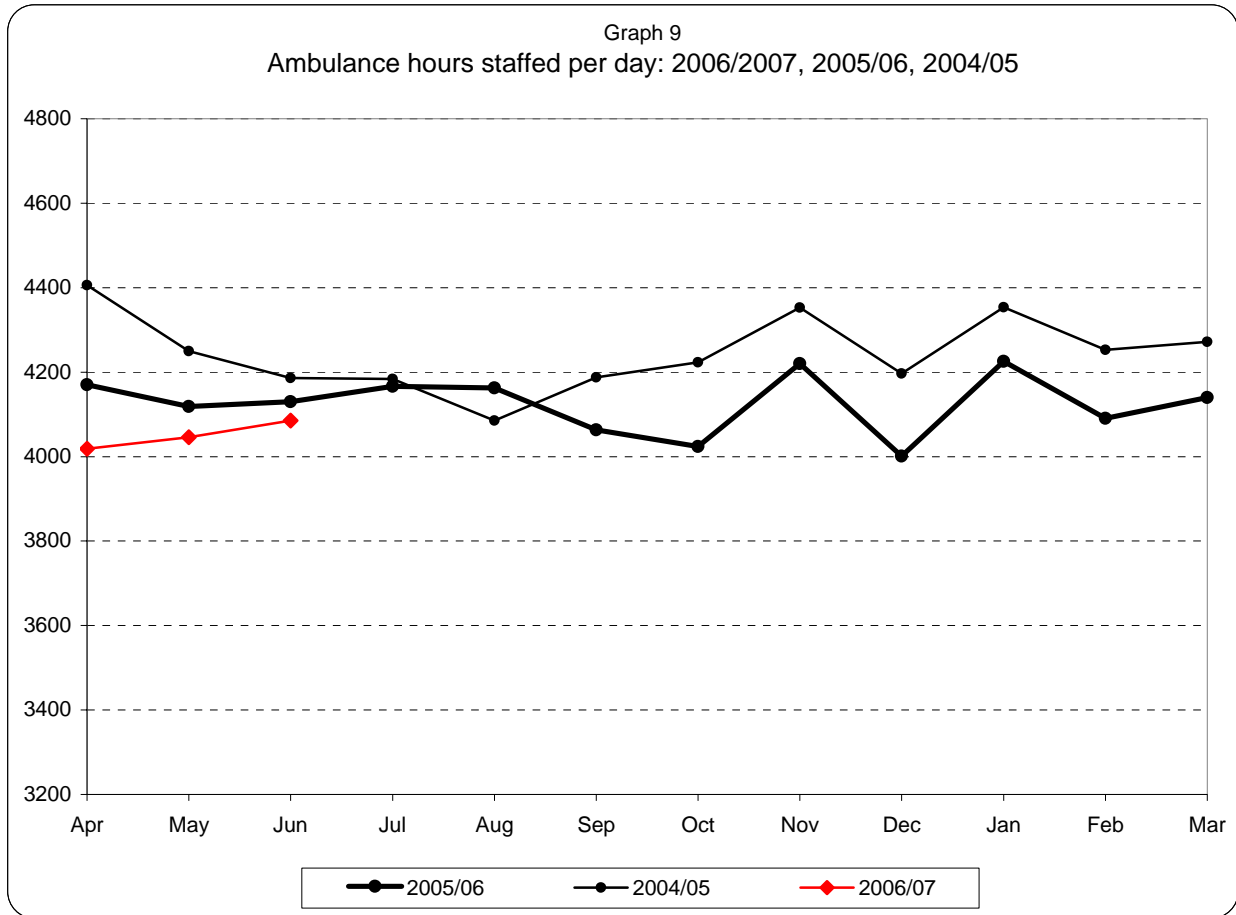
**London Ambulance Service NHS Trust  
Accident and Emergency Service  
Ambulance and FRU staffing**



Note:

1) staffed = plan + additional - unmanned - single

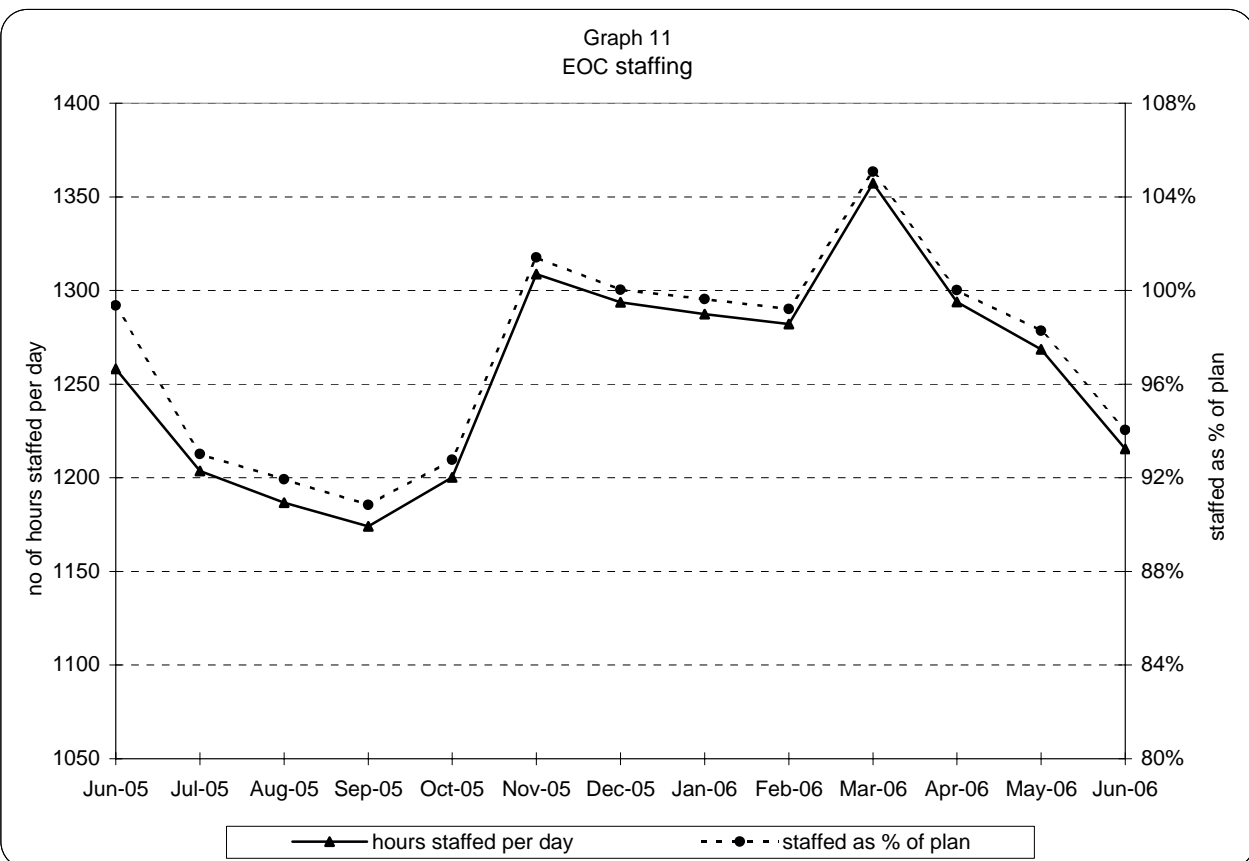
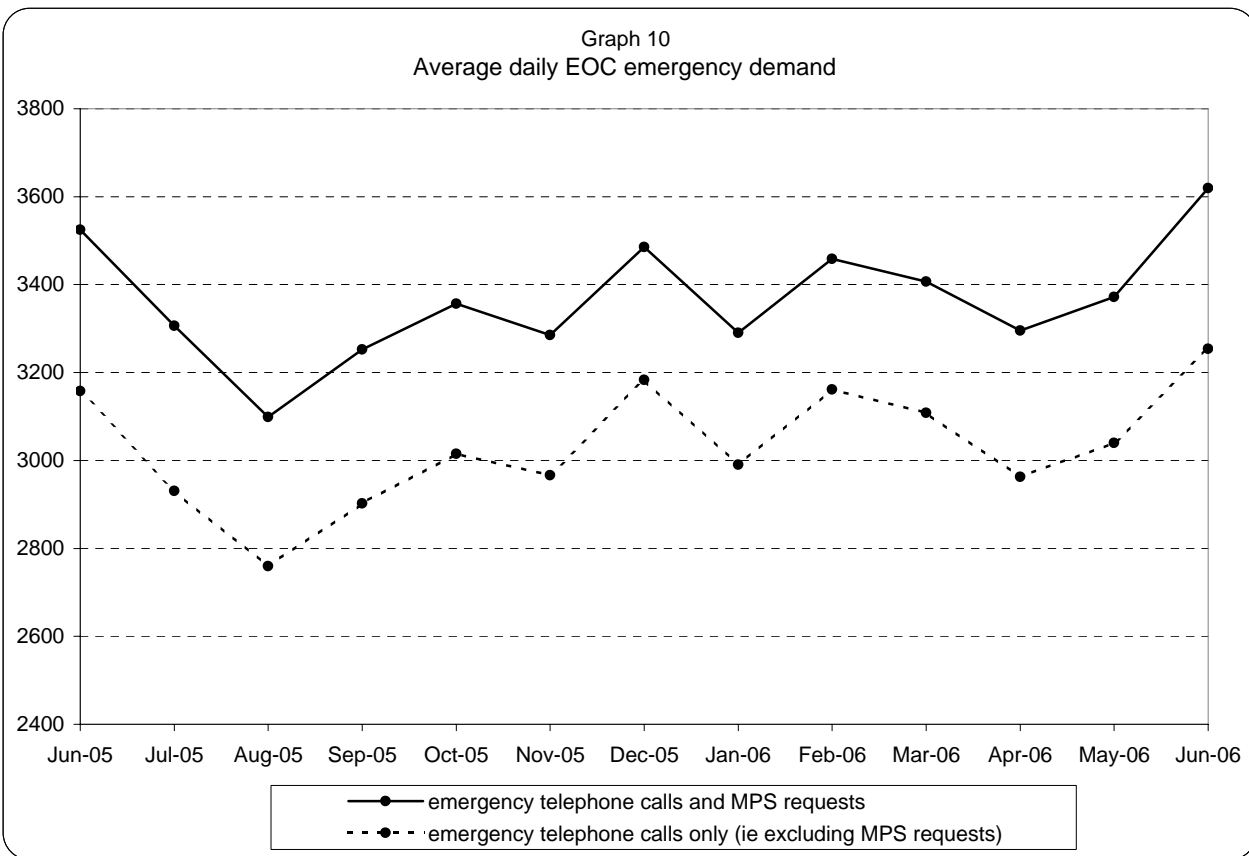
**London Ambulance Service NHS Trust  
Accident and Emergency Service  
Yearly comparison of ambulance staffing**



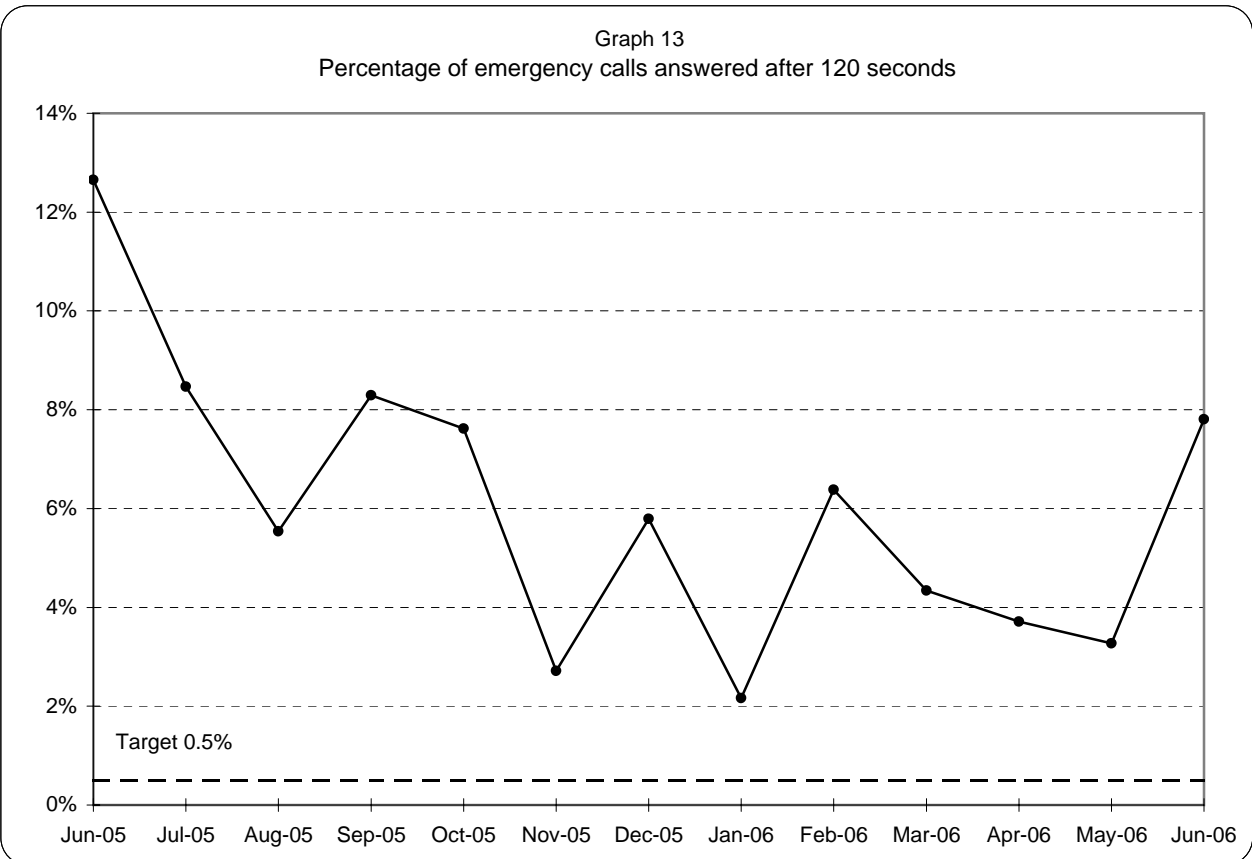
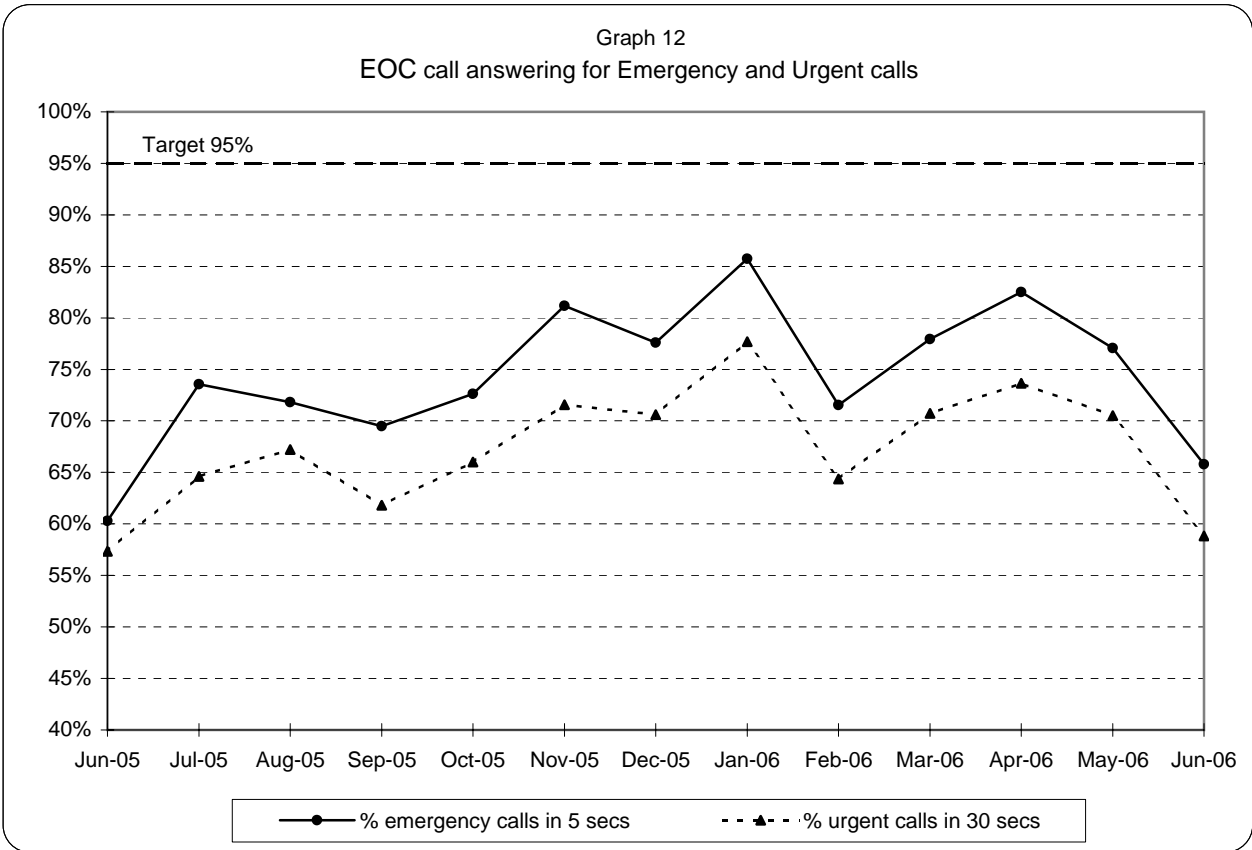
Note:staffed = plan + additional - unmanned - single



**London Ambulance Service NHS Trust  
Accident and Emergency Service  
EOC activity and staffing**



**London Ambulance Service NHS Trust  
Accident and Emergency Service  
EOC call answering performance**



Note: 95% target applies to both Emergency and Urgent call answering

**London Ambulance Service NHS Trust**  
**Accident and Emergency Service**  
**Category A activity and performance by Primary Care Trust**

Table 3

		Apr-06			May-06			Jun-06		
		Cat A resp	Cat A in 8	% cat A resp in 8 mins	Cat A resp	Cat A in 8	% cat A resp in 8 mins	Cat A resp	Cat A in 8	% cat A resp in 8 mins
5K5	Brent PCT	814	616	76%	916	644	70%	988	673	68%
5HX	Ealing PCT	953	724	76%	1,047	756	72%	1,037	678	65%
5H1	Hammersmith & Fulham PCT	557	443	80%	583	454	78%	618	493	80%
5K6	Harrow PCT	561	452	81%	601	483	80%	600	465	78%
5AT	Hillingdon PCT	927	683	74%	861	645	75%	937	674	72%
5HY	Hounslow PCT	690	537	78%	737	556	75%	747	517	69%
5LA	Kensington & Chelsea PCT	394	306	78%	471	368	78%	499	354	71%
5LC	Westminster PCT	1,041	842	81%	1,101	887	81%	1,164	827	71%
<b>North West London Strategic HA</b>		<b>5,937</b>	<b>4,603</b>	<b>78%</b>	<b>6,317</b>	<b>4,793</b>	<b>76%</b>	<b>6,590</b>	<b>4,681</b>	<b>71%</b>
5A9	Barnet PCT	911	631	69%	932	655	70%	866	600	69%
5K7	Camden PCT	798	700	88%	853	721	85%	874	714	82%
5C1	Enfield PCT	877	714	81%	865	679	78%	907	644	71%
5C9	Haringey PCT	849	672	79%	820	599	73%	868	608	70%
5K8	Islington PCT	737	618	84%	761	622	82%	786	625	80%
<b>North Central London Strategic HA</b>		<b>4,172</b>	<b>3,335</b>	<b>80%</b>	<b>4,231</b>	<b>3,276</b>	<b>77%</b>	<b>4,301</b>	<b>3,191</b>	<b>74%</b>
5C2	Barking & Dagenham PCT	664	493	74%	636	462	73%	657	466	71%
5C3	City & Hackney PCT	908	669	74%	998	710	71%	943	688	73%
5A4	Havering PCT	665	474	71%	593	398	67%	617	414	67%
5C5	Newham PCT	879	588	67%	1,007	711	71%	1,043	699	67%
5NA	Redbridge PCT	649	493	76%	704	502	71%	763	508	67%
5C4	Tower Hamlets PCT	811	594	73%	821	551	67%	828	545	66%
5NC	Waltham Forest PCT	782	606	77%	766	567	74%	755	502	66%
<b>North East London Strategic HA</b>		<b>5,358</b>	<b>3,917</b>	<b>73%</b>	<b>5,525</b>	<b>3,901</b>	<b>71%</b>	<b>5,606</b>	<b>3,822</b>	<b>68%</b>
5AX	Bexley PCT	588	450	77%	583	455	78%	576	444	77%
5A7	Bromley PCT	755	543	72%	808	596	74%	778	532	68%
5A8	Greenwich PCT	817	630	77%	828	610	74%	810	600	74%
5LD	Lambeth PCT	943	741	79%	1,099	820	75%	1,069	742	69%
5LF	Lewisham PCT	801	594	74%	854	610	71%	818	529	65%
5LE	Southwark PCT	1,083	831	77%	1,101	819	74%	1,063	760	71%
<b>South East London Strategic HA</b>		<b>4,987</b>	<b>3,789</b>	<b>76%</b>	<b>5,273</b>	<b>3,910</b>	<b>74%</b>	<b>5,114</b>	<b>3,607</b>	<b>71%</b>
5K9	Croydon PCT	943	711	75%	1,032	762	74%	998	731	73%
5A5	Kingston PCT	386	295	76%	392	286	73%	356	258	72%
5M6	Richmond & Twickenham PCT	379	273	72%	425	309	73%	377	230	61%
5M7	Sutton & Merton PCT	930	719	77%	936	729	78%	916	662	72%
5LG	Wandsworth PCT	702	526	75%	752	568	76%	776	563	73%
<b>South West London Strategic HA</b>		<b>3,340</b>	<b>2,524</b>	<b>76%</b>	<b>3,537</b>	<b>2,654</b>	<b>75%</b>	<b>3,423</b>	<b>2,444</b>	<b>71%</b>
	Lowest (excl out of London)			67%			67%			61%
	Highest (excl out of London)			88%			85%			82%
	Range			21%			17%			21%