



Information pack for Trust Board

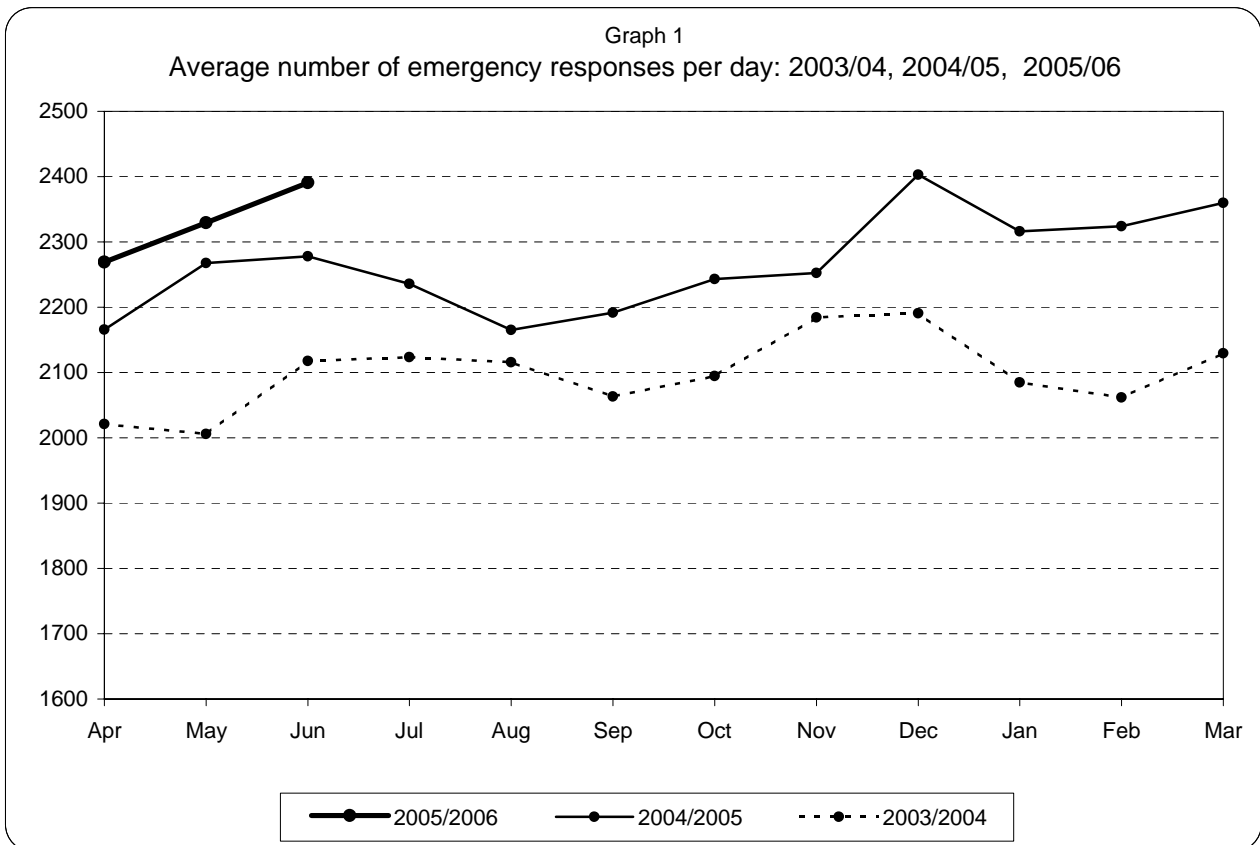
July 2005

(data to June 2005)

Note: PRF data entry is up to 20th June 2005

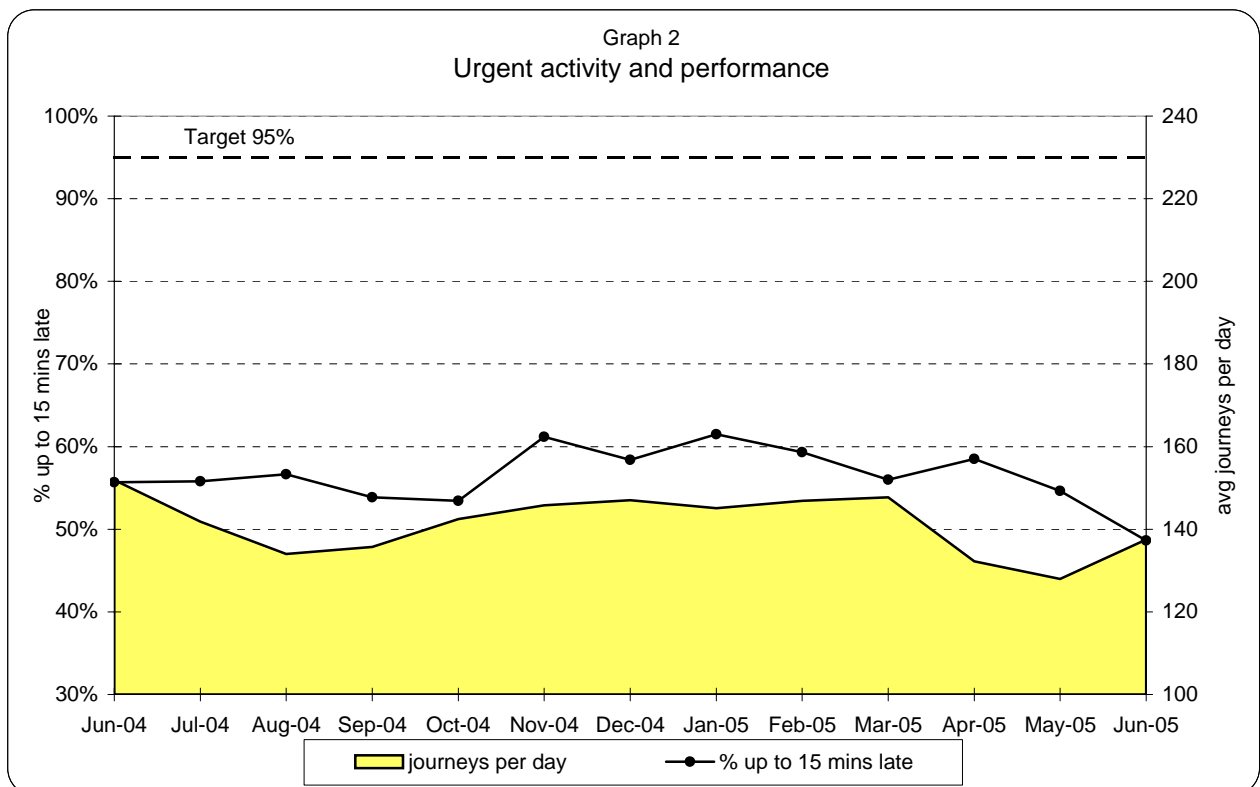
Meg Sparey
Management Information
Date: July 11, 2005

**London Ambulance Service NHS Trust
Accident and Emergency Service
Emergency activity and Urgent activity and performance**



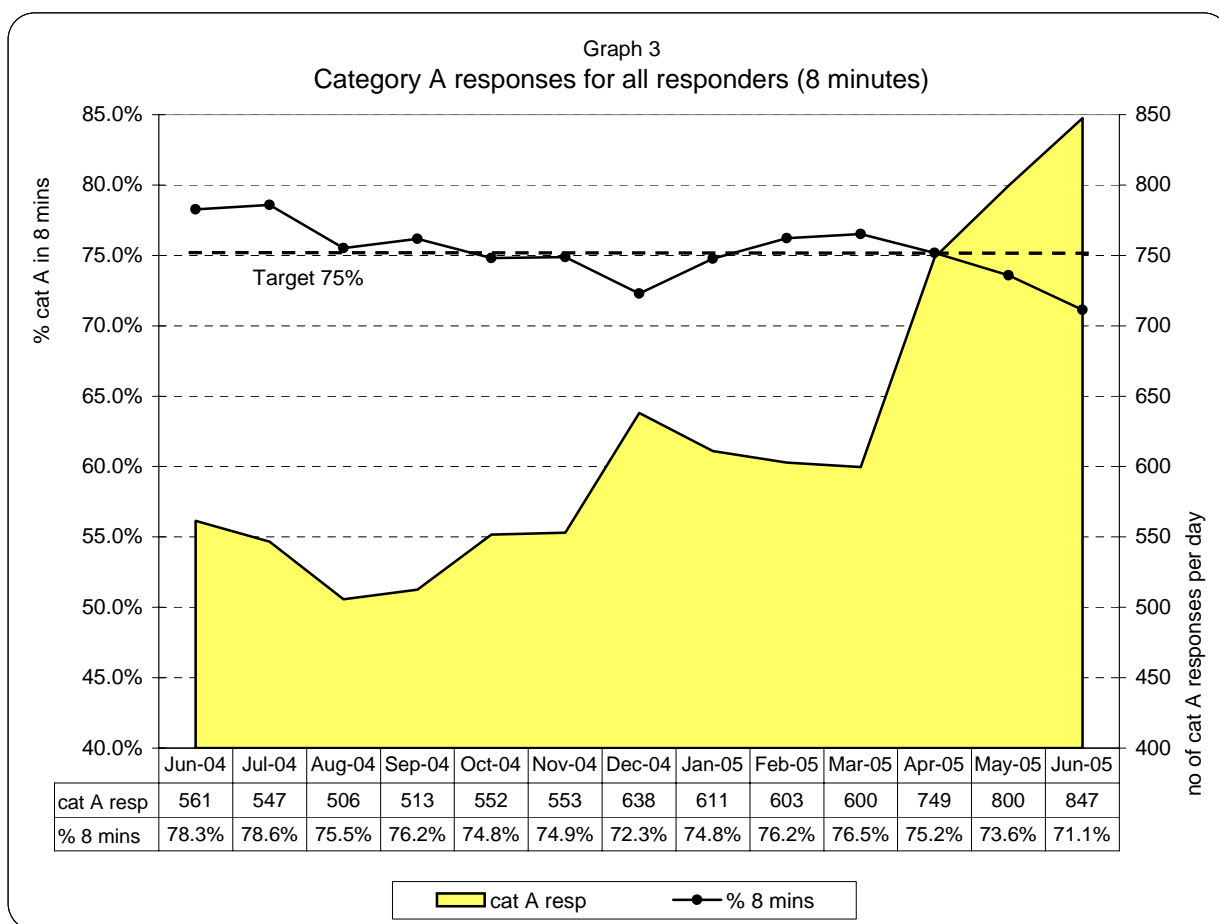
Emergency responses: monthly and year to date comparison

June 05 v June 04	Apr 05-June 05 v Apr 04-June 04
+4.8%	+4.1%



Note: Urgent performance measures the arrival at hospital time against requested arrival time (target=95% of patients to arrive no more than 15 mins after time requested)

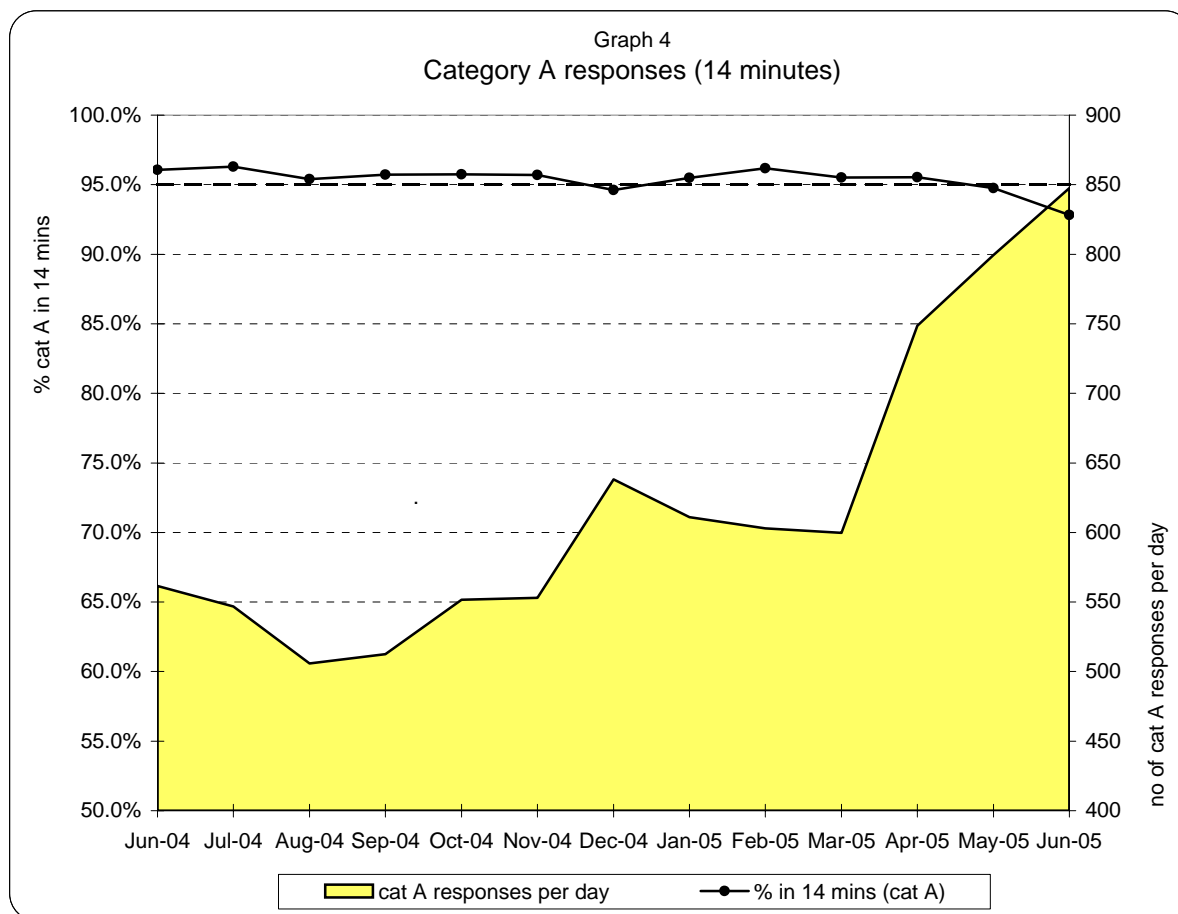
**London Ambulance Service NHS Trust
Accident and Emergency Service
Emergency responses: 8 minute response activity and performance**



**Table 1
8 minute response by Strategic Health Authority (cat A, for all responders)**

	North West London	North Central London	North East London	South East London	South West London	Total LAS
Apr-05	76%	78%	72%	76%	74%	75%
May-05	73%	75%	72%	75%	73%	74%
Jun-05	70%	74%	69%	73%	72%	71%
Jul-05						
Aug-05						
Sep-05						
Oct-05						
Nov-05						
Dec-05						
Jan-06						
Feb-06						
Mar-06						
YTD	73%	75%	71%	75%	73%	73%

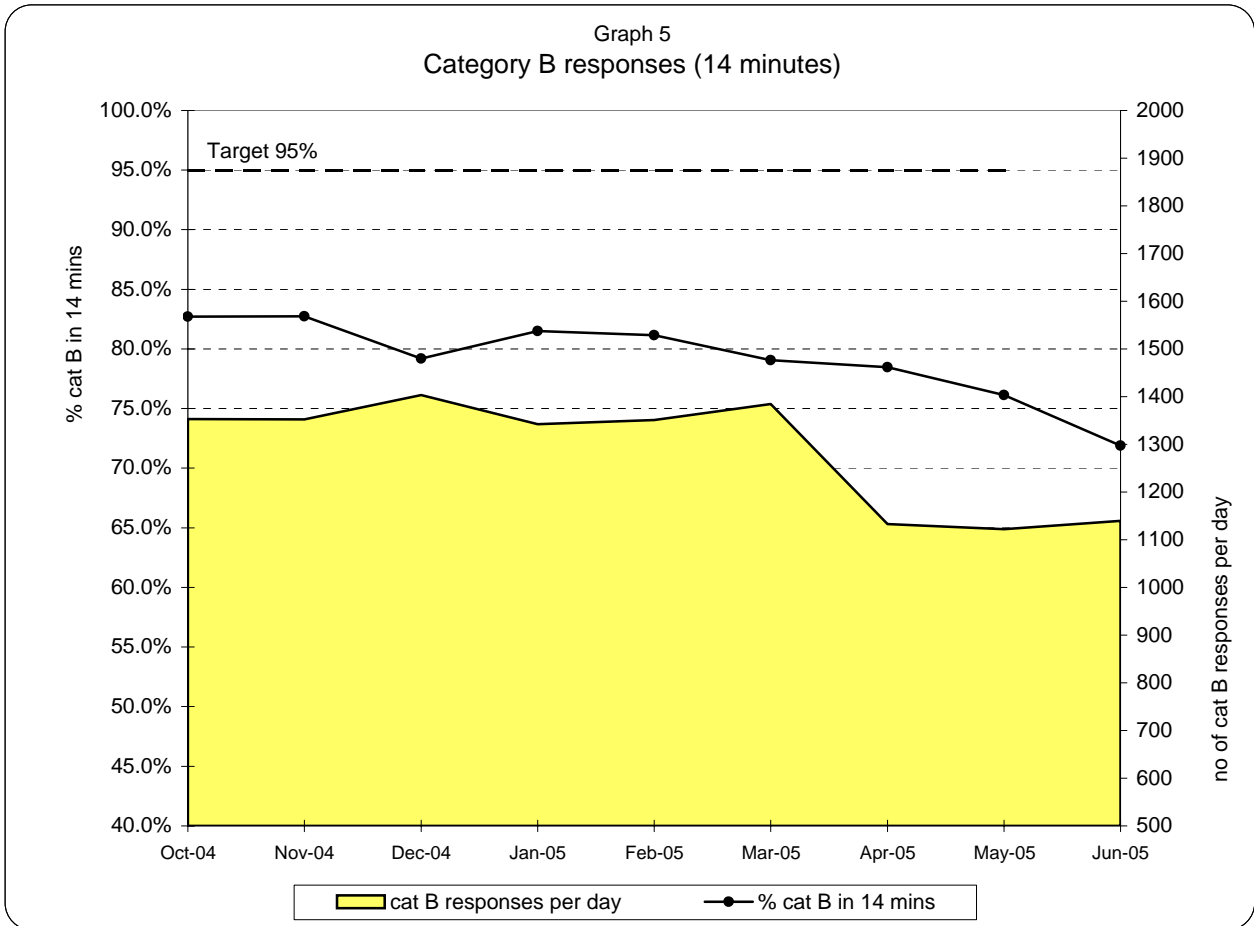
**London Ambulance Service NHS Trust
Accident and Emergency Service
Emergency responses: 14 minute response activity and performance (cat A)**



**Table 2
14 minute response by Strategic Health Authority (category A)**

	North West London	North Central London	North East London	South East London	South West London	Total LAS
Apr-05	96%	96%	93%	97%	95%	96%
May-05	95%	95%	93%	96%	96%	95%
Jun-05	93%	94%	91%	94%	94%	93%
Jul-05						
Aug-05						
Sep-05						
Oct-05						
Nov-05						
Dec-05						
Jan-06						
Feb-06						
Mar-06						
YTD	95%	95%	92%	96%	95%	94%

**London Ambulance Service NHS Trust
Accident and Emergency Service
Emergency responses: 14 minute response activity and performance (cat B)**

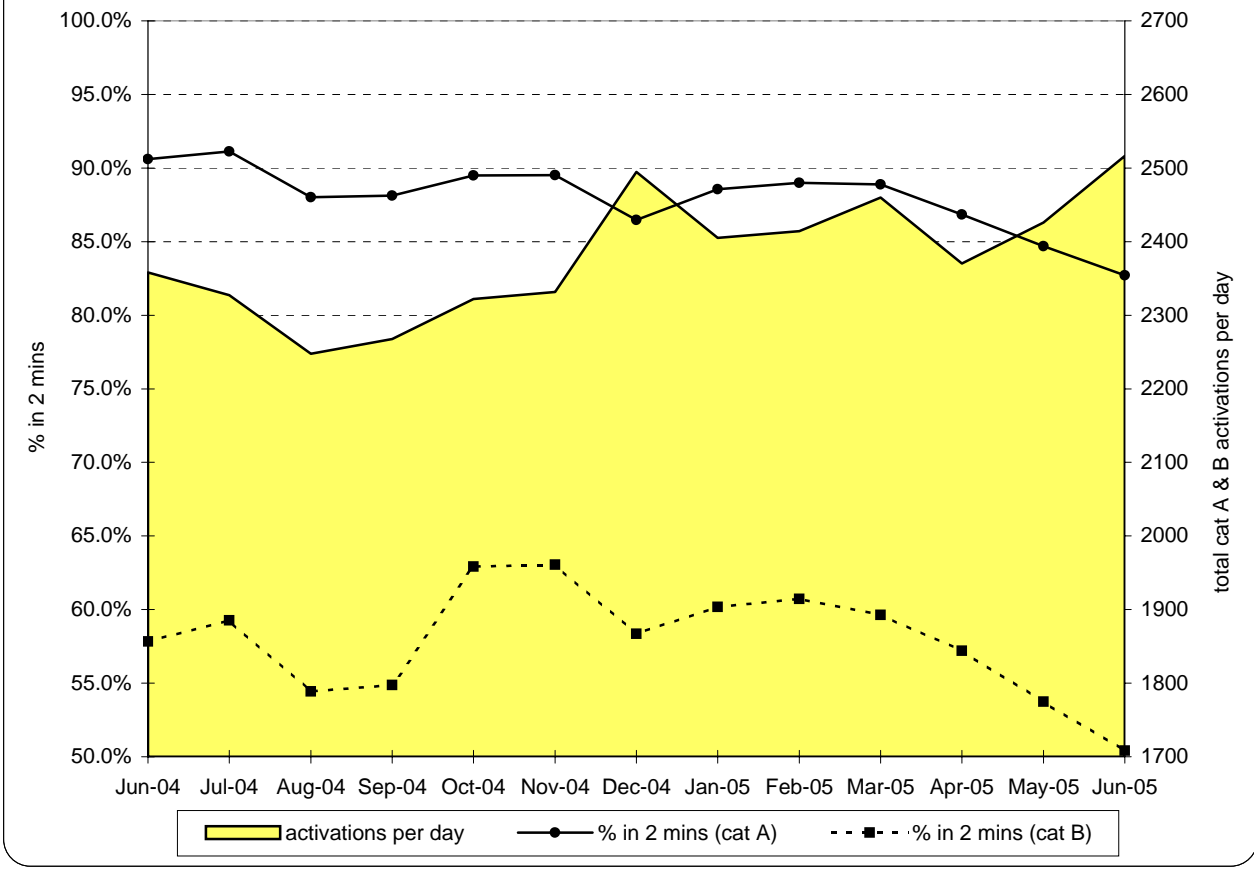


Notes:

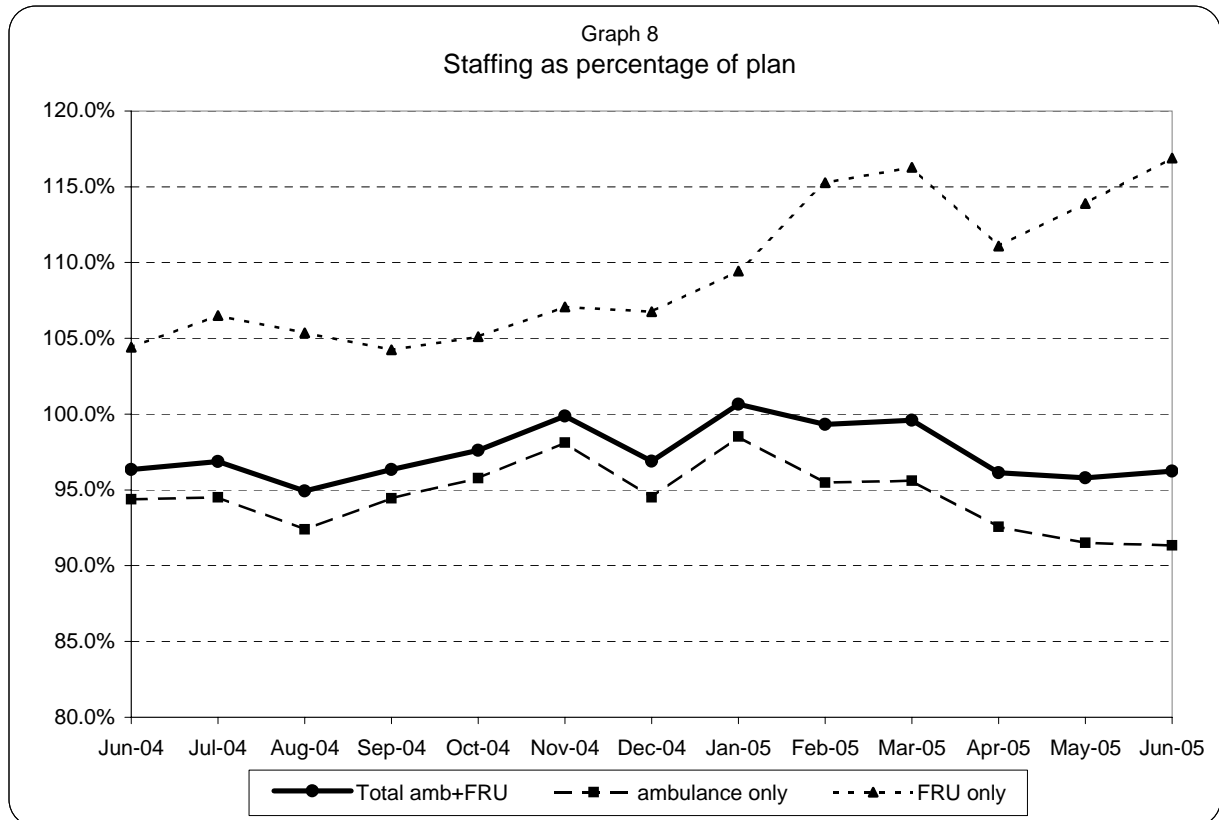
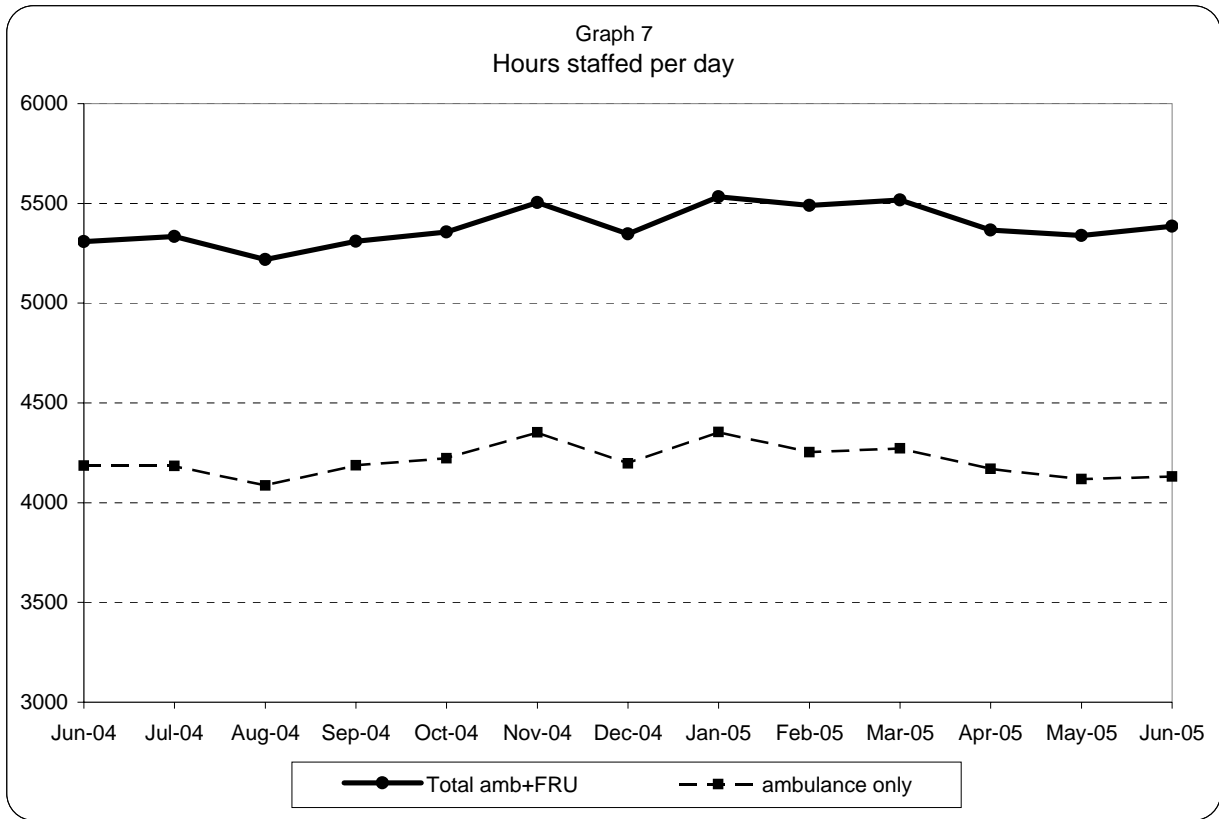
Prior to October 2004, cat B included what are now classified as cat C

**London Ambulance Service NHS Trust
Accident and Emergency Service
Emergency activations: activity and performance**

Graph 6
Category A and B activations



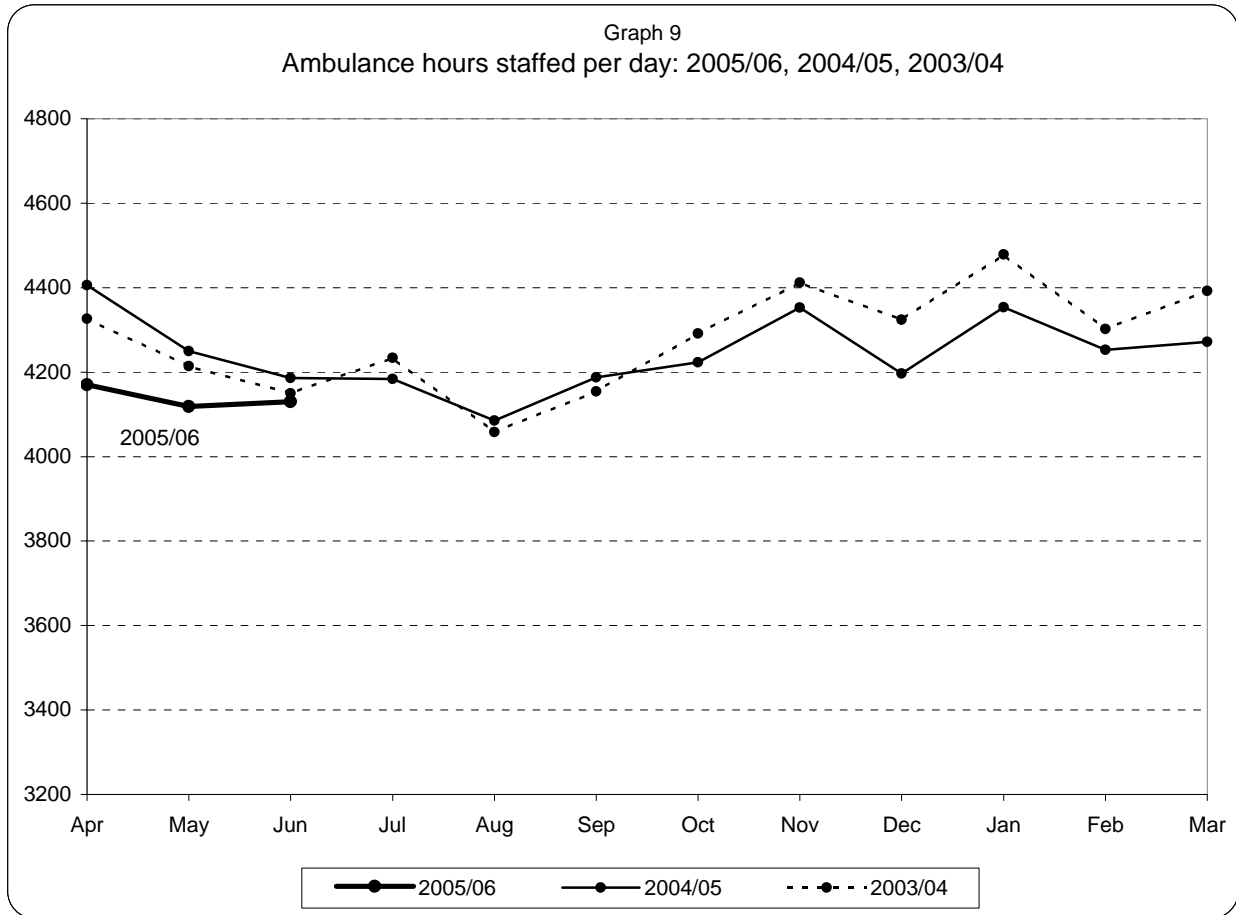
**London Ambulance Service NHS Trust
Accident and Emergency Service
Ambulance and FRU staffing**



Note:

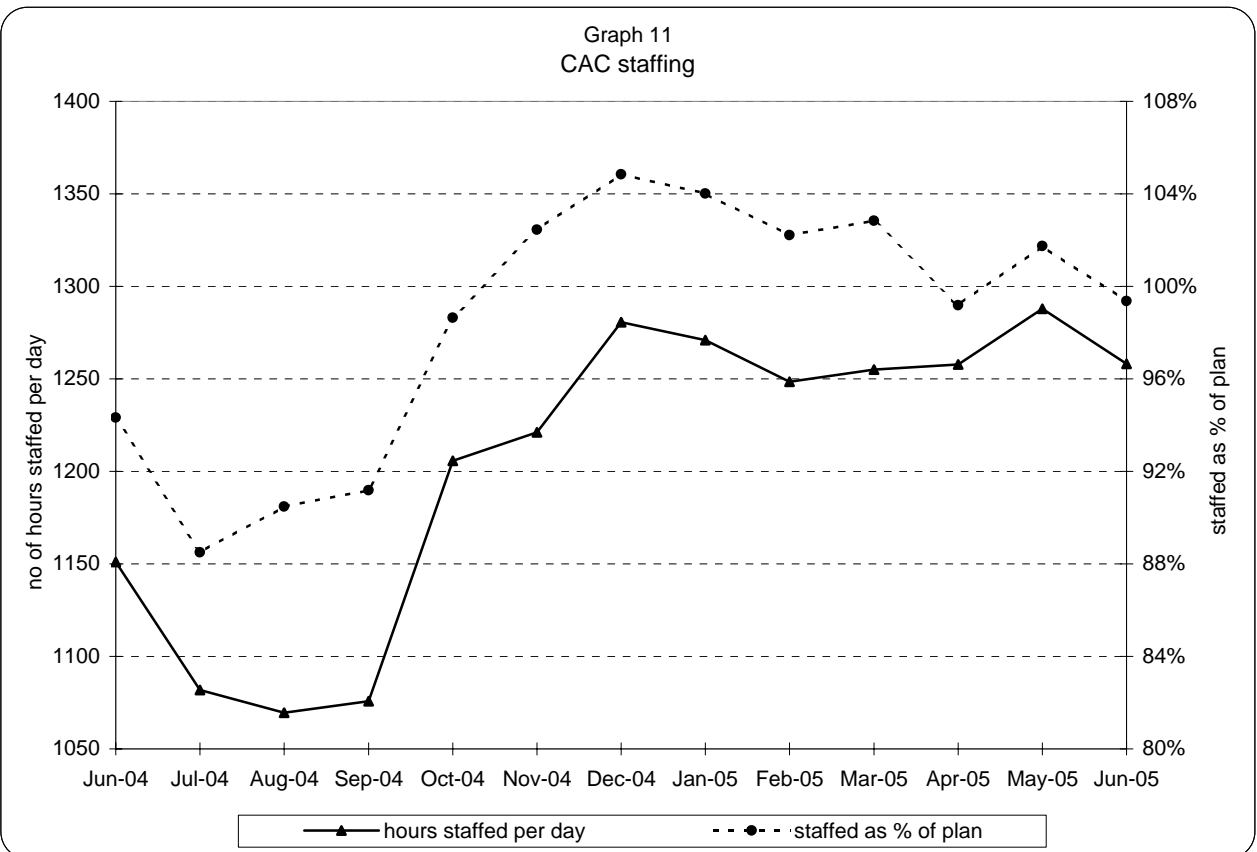
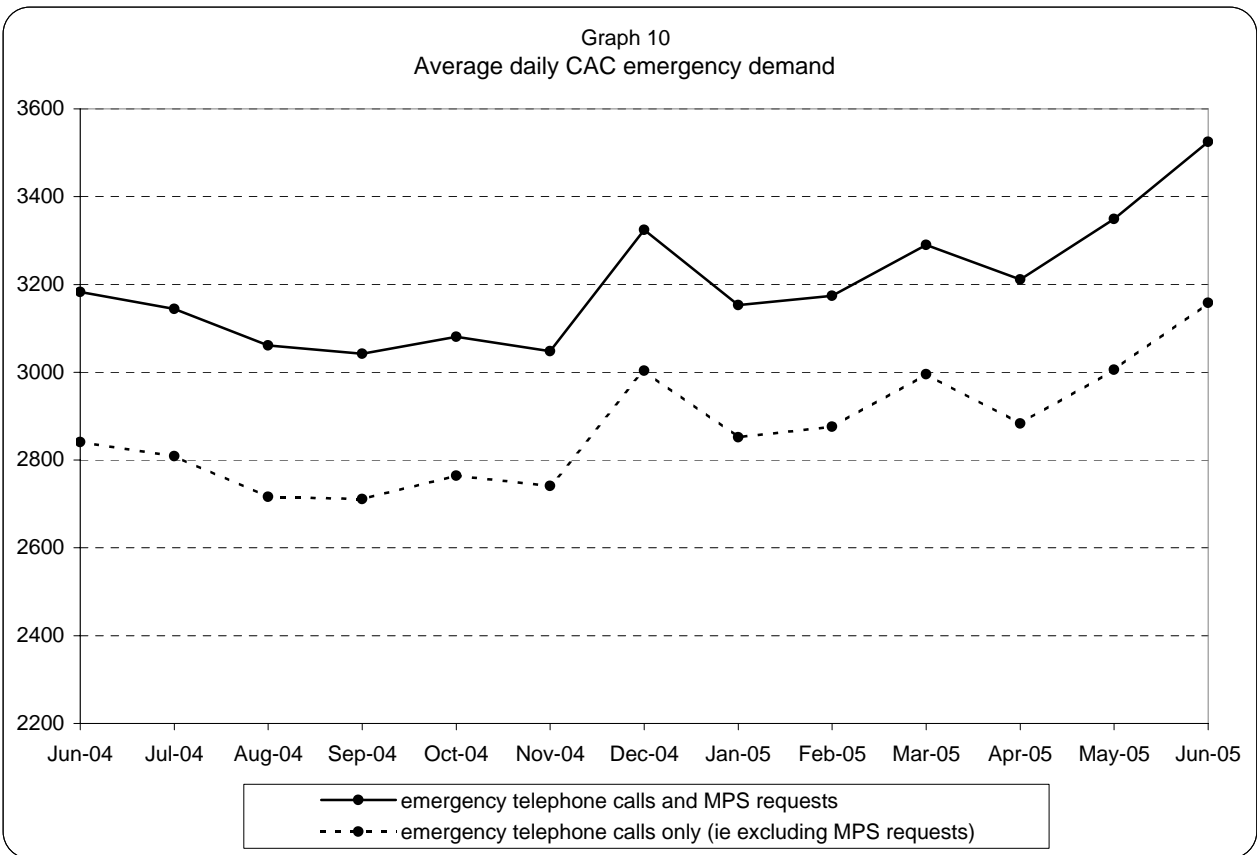
1) staffed = plan + additional - unmanned - single

**London Ambulance Service NHS Trust
Accident and Emergency Service
Yearly comparison of ambulance staffing**

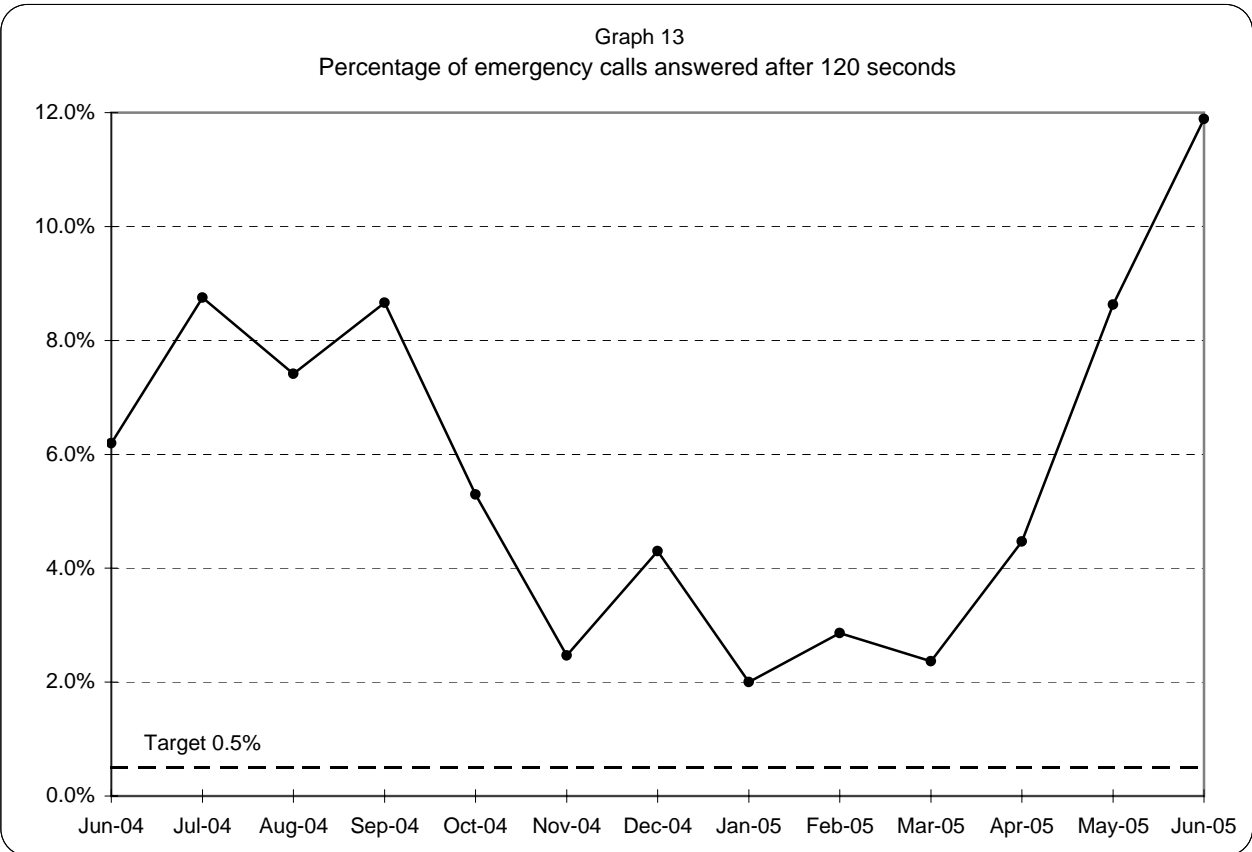
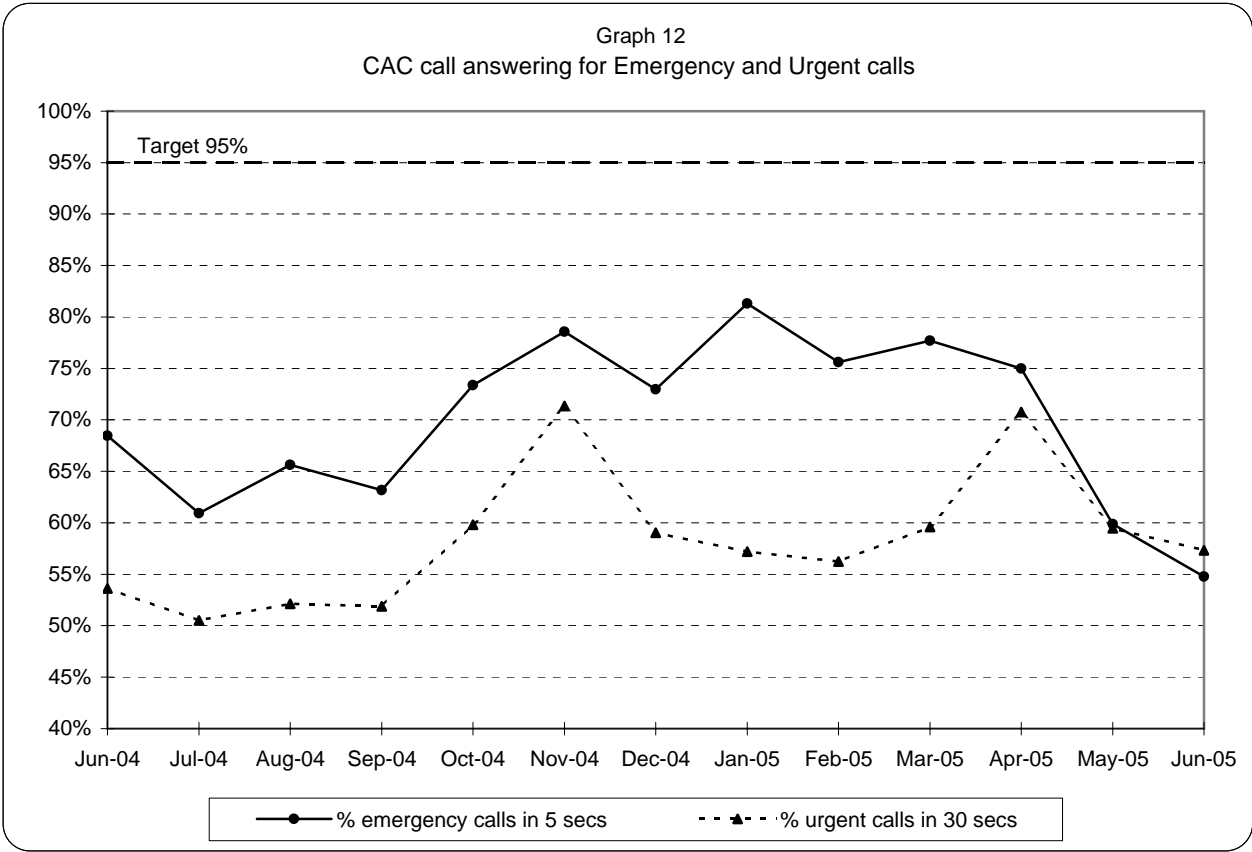


Note:staffed = plan + additional - unmanned - single

**London Ambulance Service NHS Trust
Accident and Emergency Service
CAC activity and staffing**



**London Ambulance Service NHS Trust
Accident and Emergency Service
CAC call answering performance**



Note: 95% target applies to both Emergency and Urgent call answering

London Ambulance Service NHS Trust
Accident and Emergency Service
Category A activity and performance by Primary Care Trust

Table 3
Latest month, April 2005

		April 2005		May 2005		June 2005		Year to date	
		Cat A resp	% cat A resp in 8 mins	Cat A resp	% cat A resp in 8 mins	Cat A resp	% cat A resp in 8 mins	Cat A resp	% cat A resp in 8 mins
5K5	Brent PCT	839	68%	948	66%	1,010	63%	2,797	65%
5HX	Ealing PCT	945	72%	977	69%	1,023	66%	2,945	69%
5H1	Hammersmith & Fulham PCT	506	83%	623	77%	621	73%	1,750	77%
5K6	Harrow PCT	553	80%	607	80%	621	74%	1,781	78%
5AT	Hillingdon PCT	752	72%	924	71%	934	69%	2,610	71%
5HY	Hounslow PCT	675	78%	696	72%	728	70%	2,099	73%
5LA	Kensington & Chelsea PCT	421	79%	446	76%	409	73%	1,276	76%
5LC	Westminster PCT	1,049	82%	1,136	80%	1,124	75%	3,309	79%
North West London Strategic HA		5,740	76%	6,357	73%	6,470	70%	18,567	73%
5A9	Barnet PCT	807	66%	860	62%	913	65%	2,580	64%
5K7	Camden PCT	745	87%	857	85%	937	83%	2,539	85%
5C1	Enfield PCT	812	76%	872	74%	900	73%	2,584	74%
5C9	Haringey PCT	763	77%	850	73%	906	70%	2,519	73%
5K8	Islington PCT	719	83%	761	83%	787	77%	2,267	81%
North Central London Strategic HA		3,846	78%	4,200	75%	4,443	74%	12,489	75%
5C2	Barking & Dagenham PCT	626	72%	626	73%	662	67%	1,914	70%
5C3	City & Hackney PCT	826	68%	977	72%	1,005	67%	2,808	69%
5A4	Havering PCT	557	70%	622	71%	599	69%	1,778	70%
5C5	Newham PCT	904	74%	1,005	71%	1,016	66%	2,925	70%
5NA	Redbridge PCT	641	77%	738	73%	725	73%	2,104	74%
5C4	Tower Hamlets PCT	795	70%	809	71%	841	67%	2,445	69%
5NC	Waltham Forest PCT	675	76%	728	74%	766	77%	2,169	76%
North East London Strategic HA		5,024	72%	5,505	72%	5,614	69%	16,143	71%
5AX	Bexley PCT	504	78%	563	79%	621	78%	1,688	78%
5A7	Bromley PCT	734	76%	791	73%	785	72%	2,310	74%
5A8	Greenwich PCT	765	70%	877	70%	784	72%	2,426	71%
5LD	Lambeth PCT	963	74%	1,081	72%	1,116	73%	3,160	73%
5LF	Lewisham PCT	753	75%	866	77%	874	70%	2,493	74%
5LE	Southwark PCT	917	82%	1,044	79%	1,108	76%	3,069	79%
South East London Strategic HA		4,636	76%	5,222	75%	5,288	73%	15,146	75%
5K9	Croydon PCT	920	71%	991	67%	1,044	68%	2,955	69%
5A5	Kingston PCT	374	74%	363	74%	369	75%	1,106	75%
5M6	Richmond & Twickenham PCT	386	70%	399	68%	393	65%	1,178	68%
5M7	Sutton & Merton PCT	802	77%	913	79%	954	78%	2,669	78%
5LG	Wandsworth PCT	689	75%	787	74%	824	73%	2,300	74%
South West London Strategic HA		3,171	74%	3,453	73%	3,584	72%	10,208	73%
	Lowest (excl out of London)		66%		62%		63%		64%
	Highest (excl out of London)		87%		85%		83%		85%
	Range		20%		23%		20%		21%