

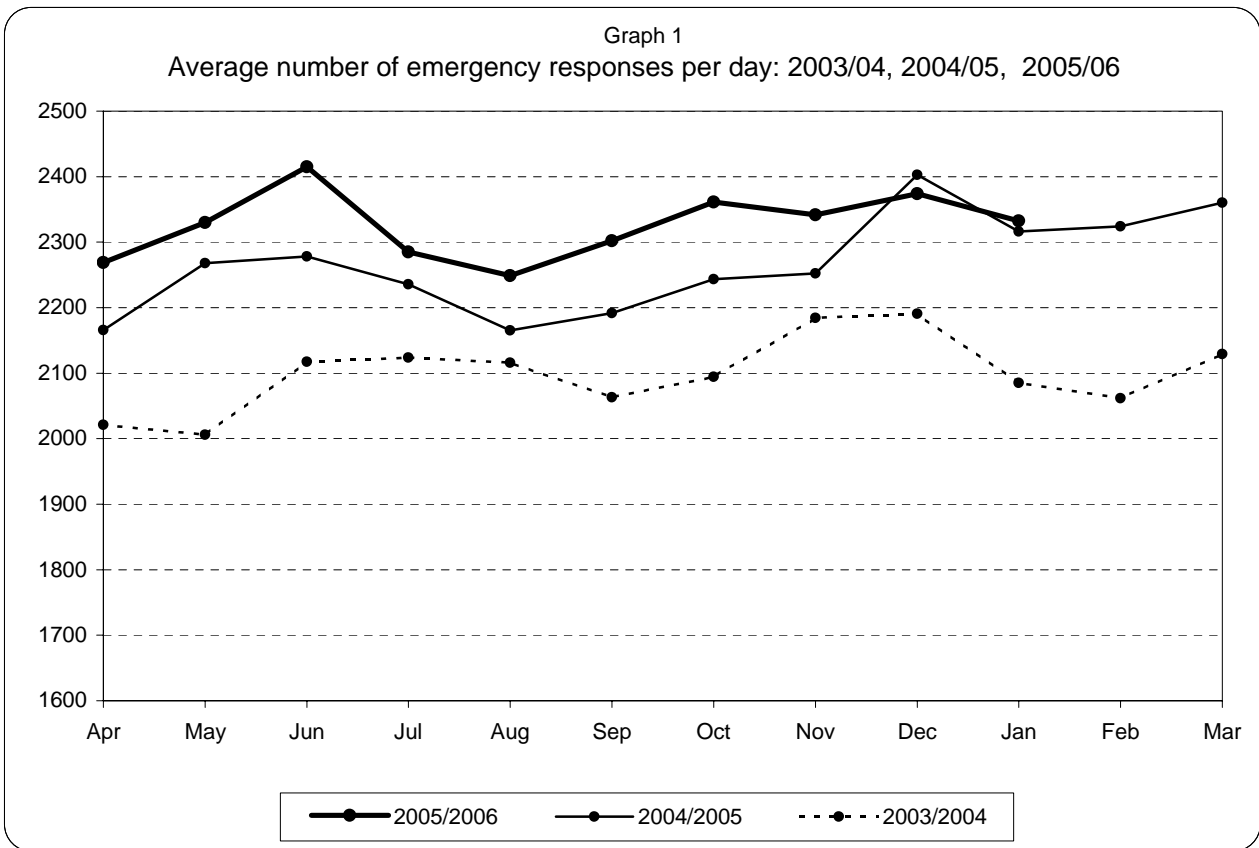


Information pack for Trust Board

December 05 / January 06

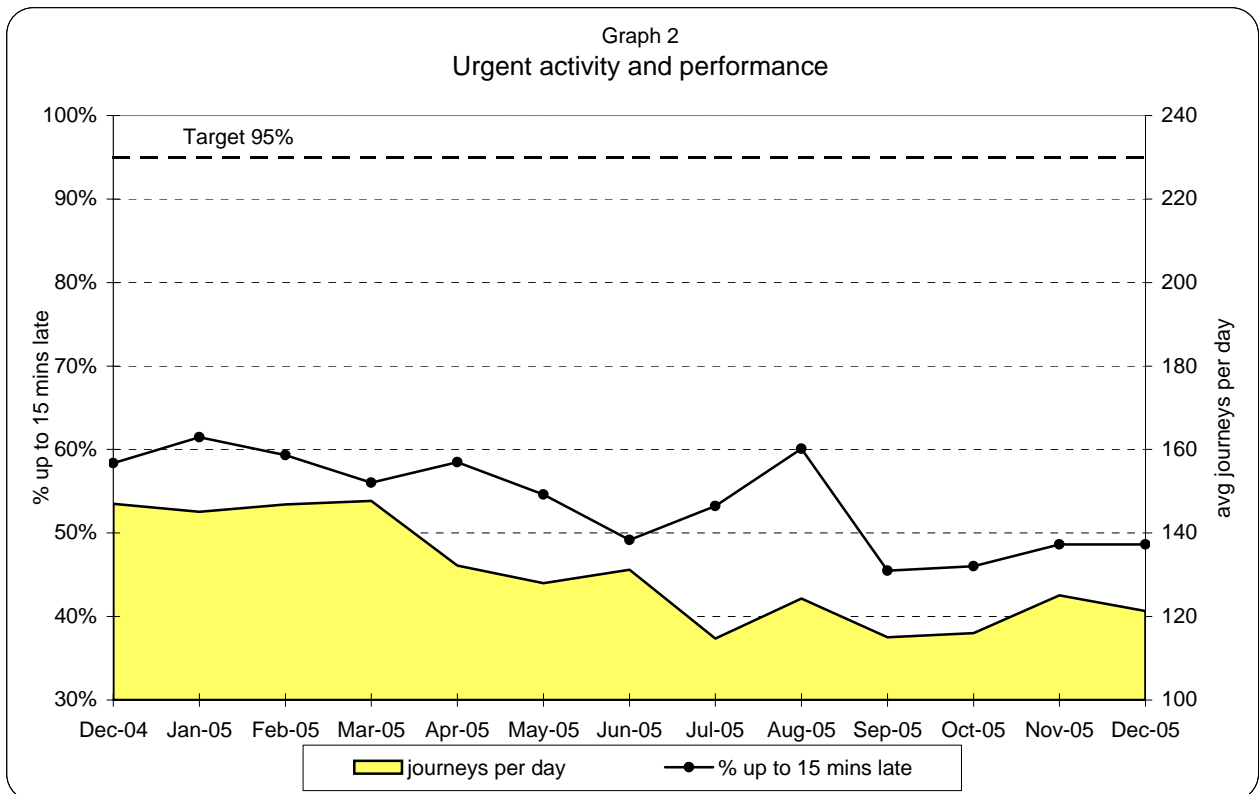
**Note: PRF data entry is up to 14th December 2005
Manning data entry is up to 16th January 2006
MDT data is up to 19th January 2006
CAC manning is up to 22nd January 2006**

**London Ambulance Service NHS Trust
Accident and Emergency Service
Emergency activity and Urgent activity and performance**



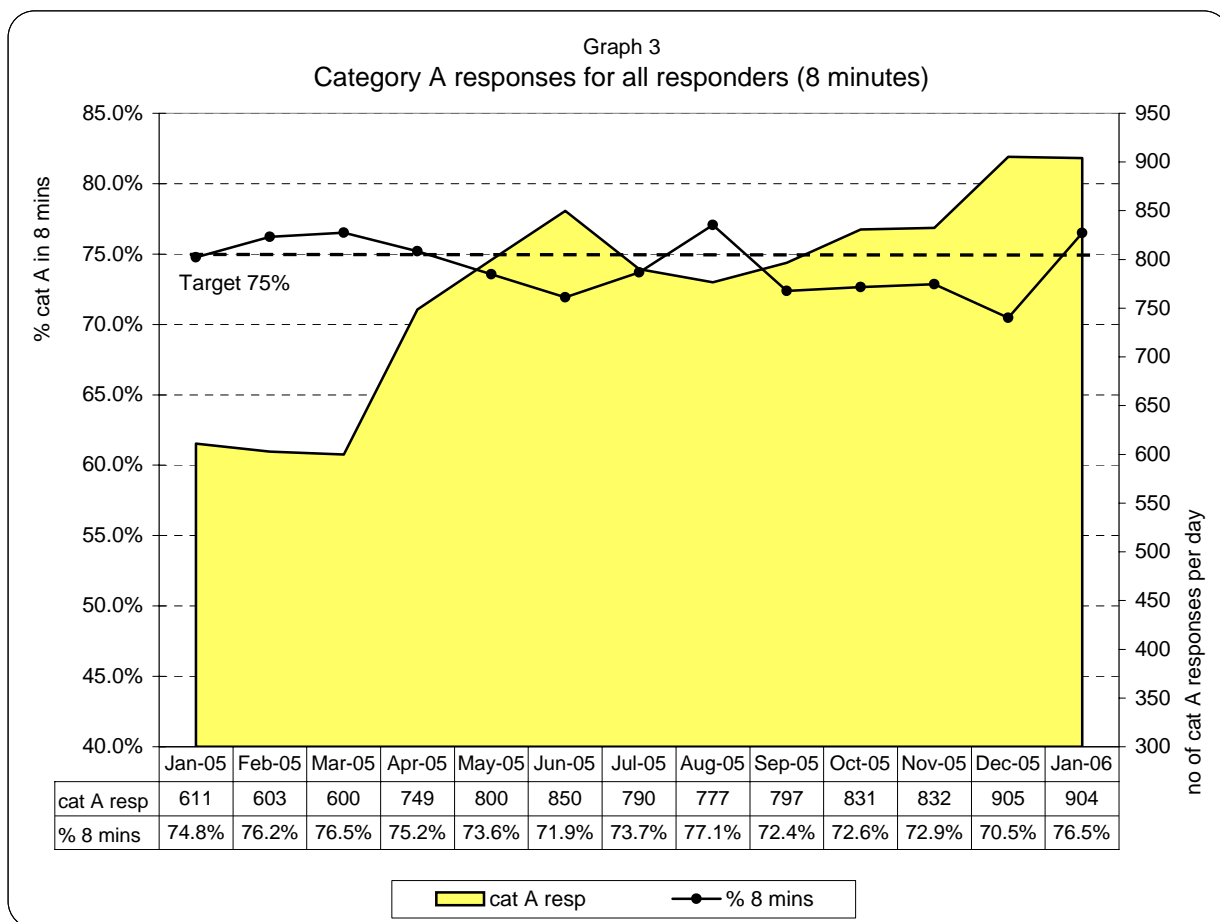
Emergency responses: monthly and year to date comparison

Dec 05 v Dec 04	Apr 05-Dec 05 v Apr 04-Dec 04
-1.2%	+3.6%



Note: Urgent performance measures the arrival at hospital time against requested arrival time (target=95% of patients to arrive no more than 15 mins after time requested)

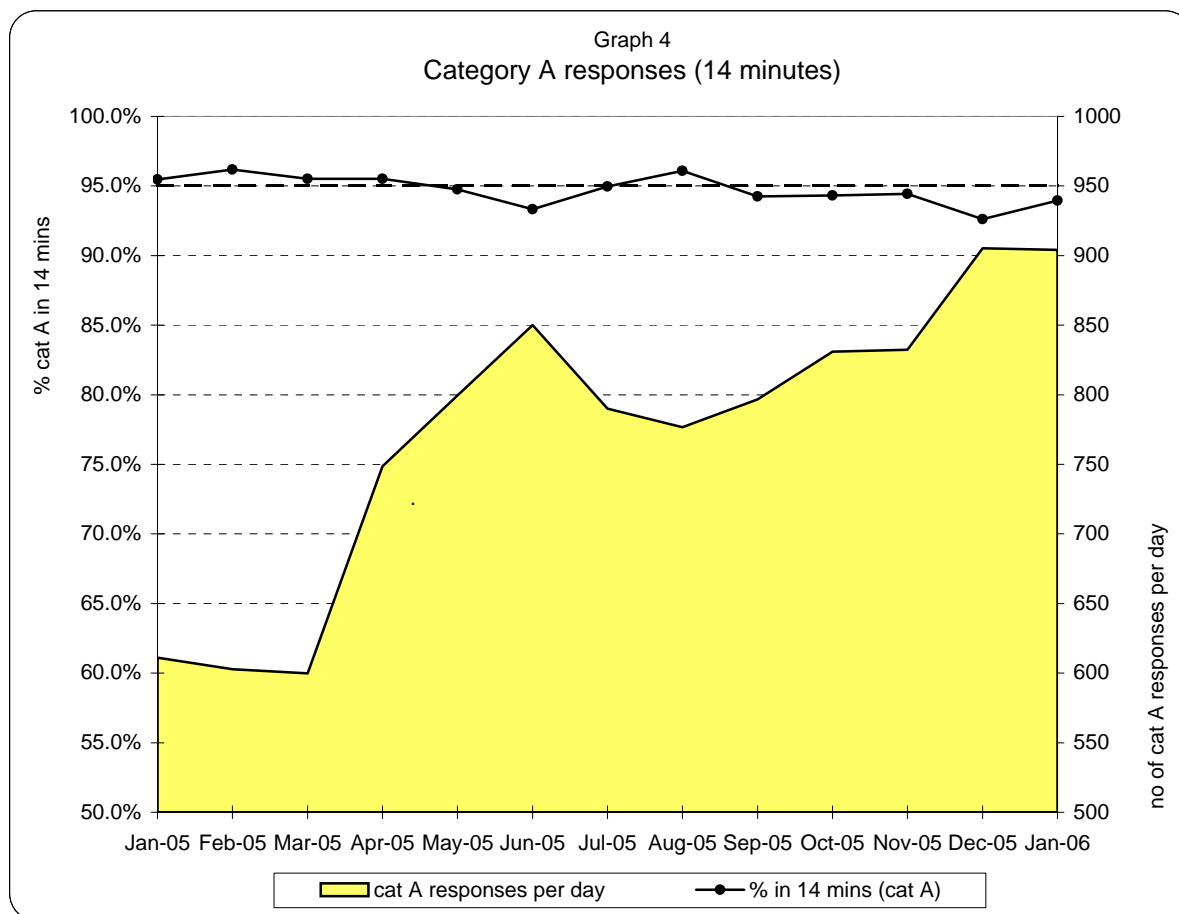
**London Ambulance Service NHS Trust
Accident and Emergency Service
Emergency responses: 8 minute response activity and performance**



**Table 1
8 minute response by Strategic Health Authority (cat A, for all responders)**

	North West London Strategic HA	North Central London Strategic HA	North East London Strategic HA	South East London Strategic HA	South West London Strategic HA	Total LAS
Apr-05	73%	75%	72%	75%	73%	75%
May-05	73%	75%	72%	75%	73%	74%
Jun-05	70%	74%	70%	74%	73%	72%
Jul-05	73%	76%	73%	75%	72%	74%
Aug-05	76%	80%	77%	79%	74%	77%
Sep-05	72%	74%	70%	74%	72%	72%
Oct-05	72%	74%	69%	75%	74%	73%
Nov-05	74%	74%	71%	73%	71%	73%
Dec-05	73%	72%	68%	71%	69%	70%
Jan-06	75%	75%	71%	77%	75%	76.5%
Feb-06						
Mar-06						
YTD	73%	75%	71%	75%	73%	73%

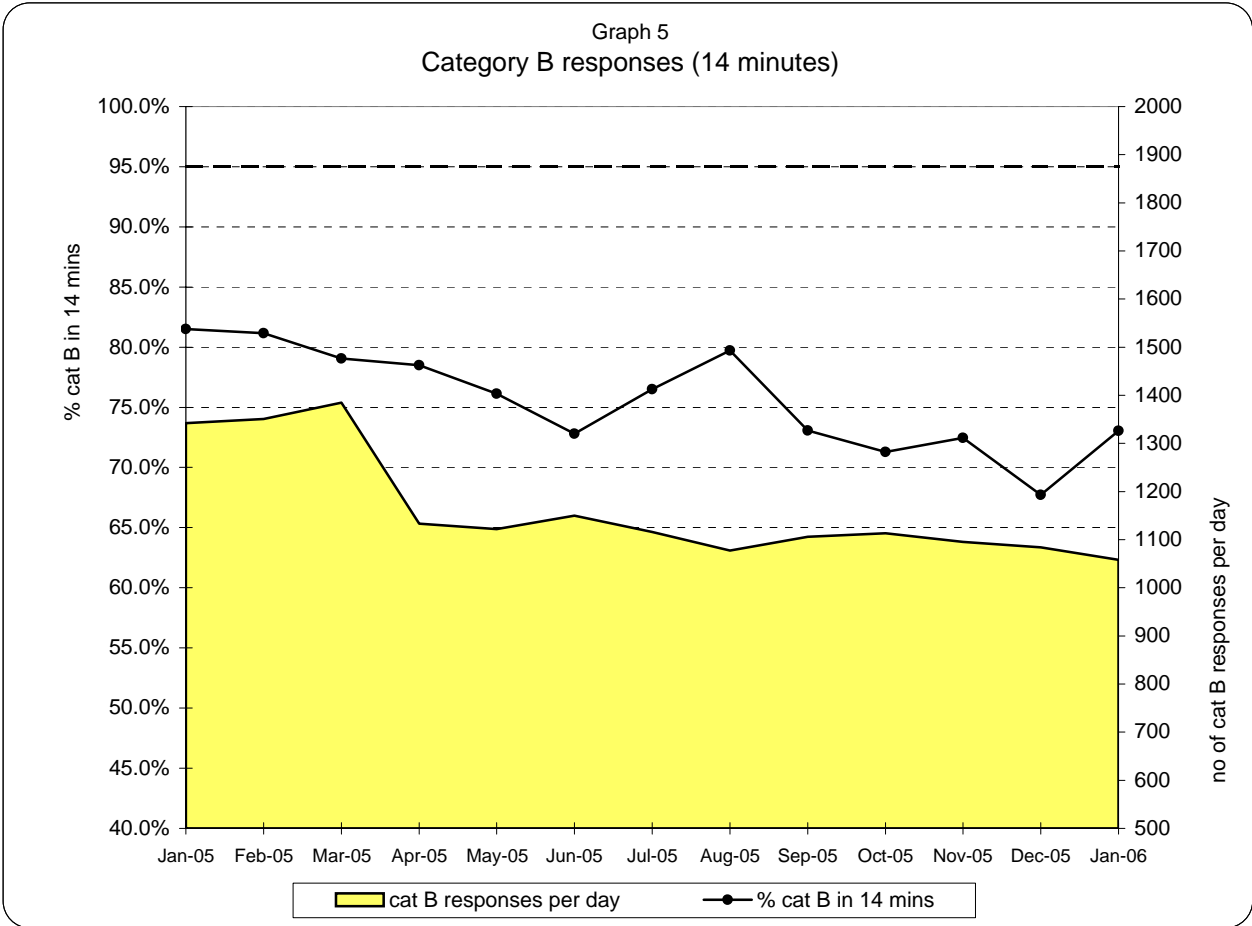
**London Ambulance Service NHS Trust
Accident and Emergency Service
Emergency responses: 14 minute response activity and performance (cat A)**



**Table 2
14 minute response by Strategic Health Authority (category A)**

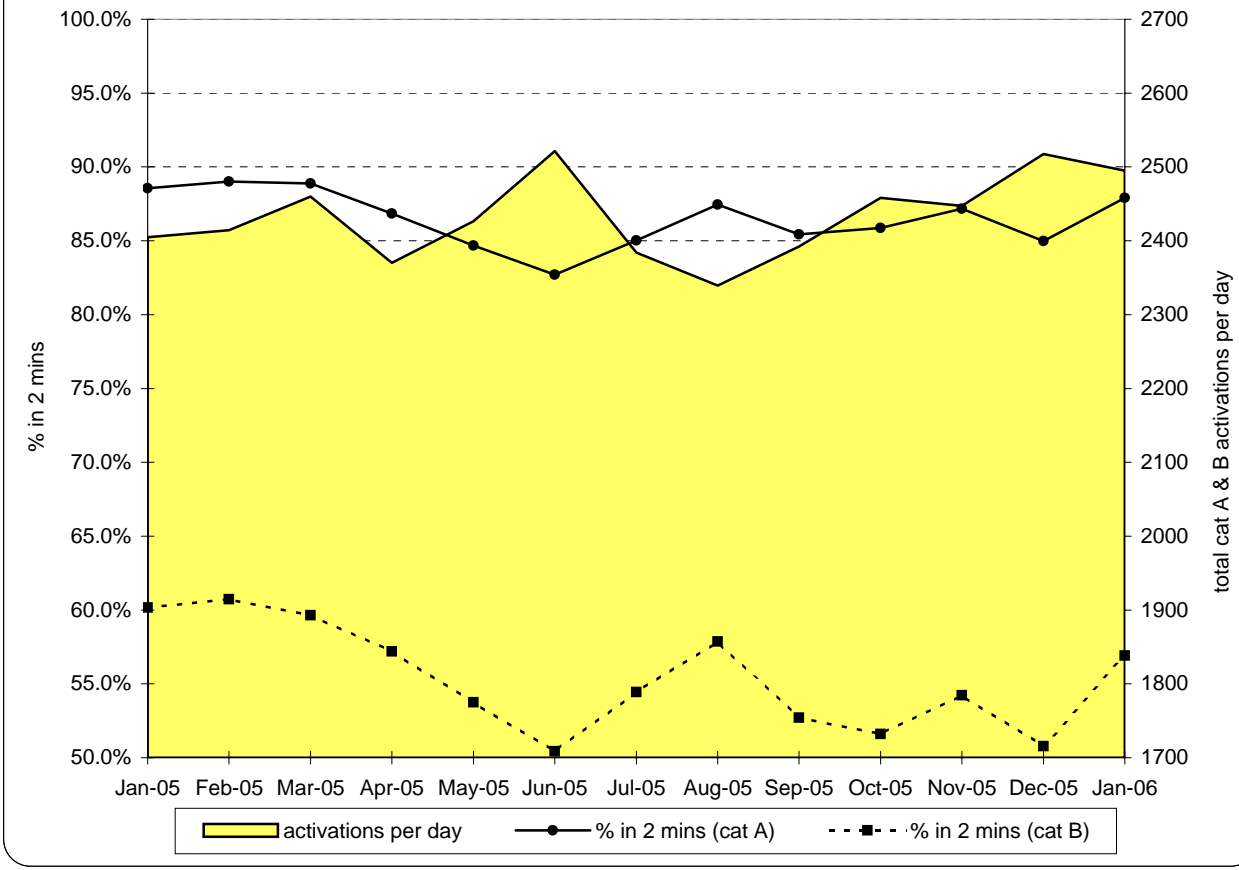
	North West London Strategic HA	North Central London Strategic HA	North East London Strategic HA	South East London Strategic HA	South West London Strategic HA	Total LAS
Apr-05	95%	95%	93%	96%	96%	96%
May-05	95%	95%	93%	96%	96%	95%
Jun-05	93%	94%	92%	95%	94%	93%
Jul-05	95%	96%	94%	96%	95%	95%
Aug-05	96%	97%	96%	96%	96%	96%
Sep-05	95%	95%	94%	94%	94%	94%
Oct-05	95%	94%	93%	95%	95%	94%
Nov-05	96%	95%	93%	94%	95%	94%
Dec-05	94%	92%	91%	93%	93%	93%
Jan-06	94%	94%	92%	95%	95%	94%
Feb-06						
Mar-06						
YTD	95%	95%	93%	95%	95%	94%

**London Ambulance Service NHS Trust
Accident and Emergency Service
Emergency responses: 14 minute response activity and performance (cat B)**

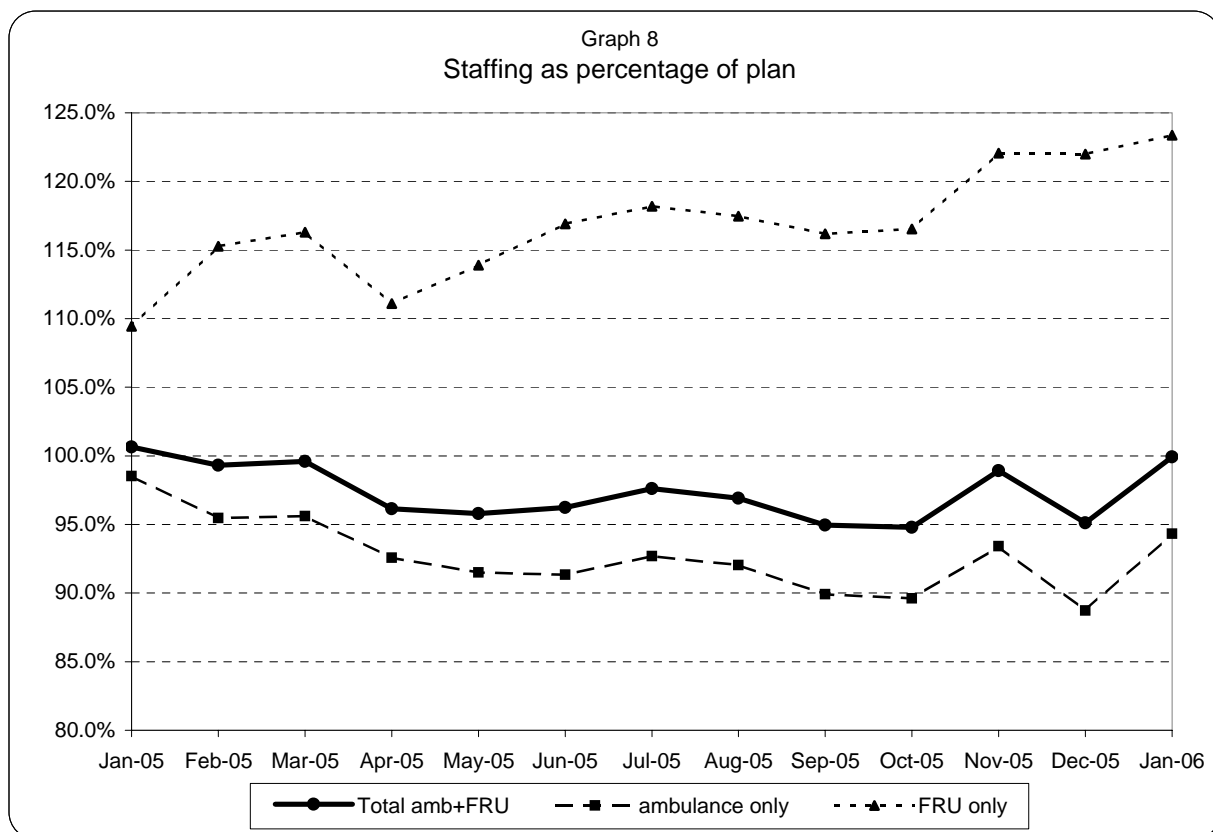
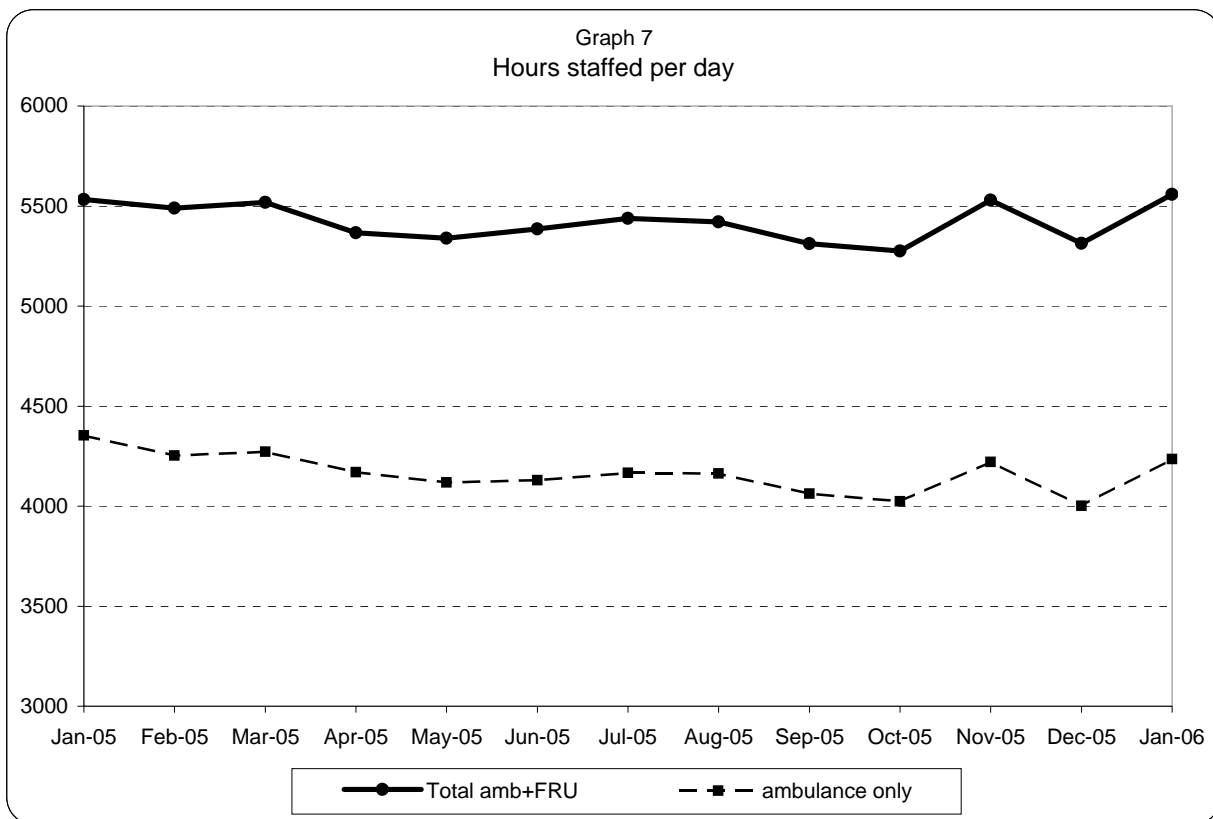


**London Ambulance Service NHS Trust
Accident and Emergency Service
Emergency activations: activity and performance**

Graph 6
Category A and B activations



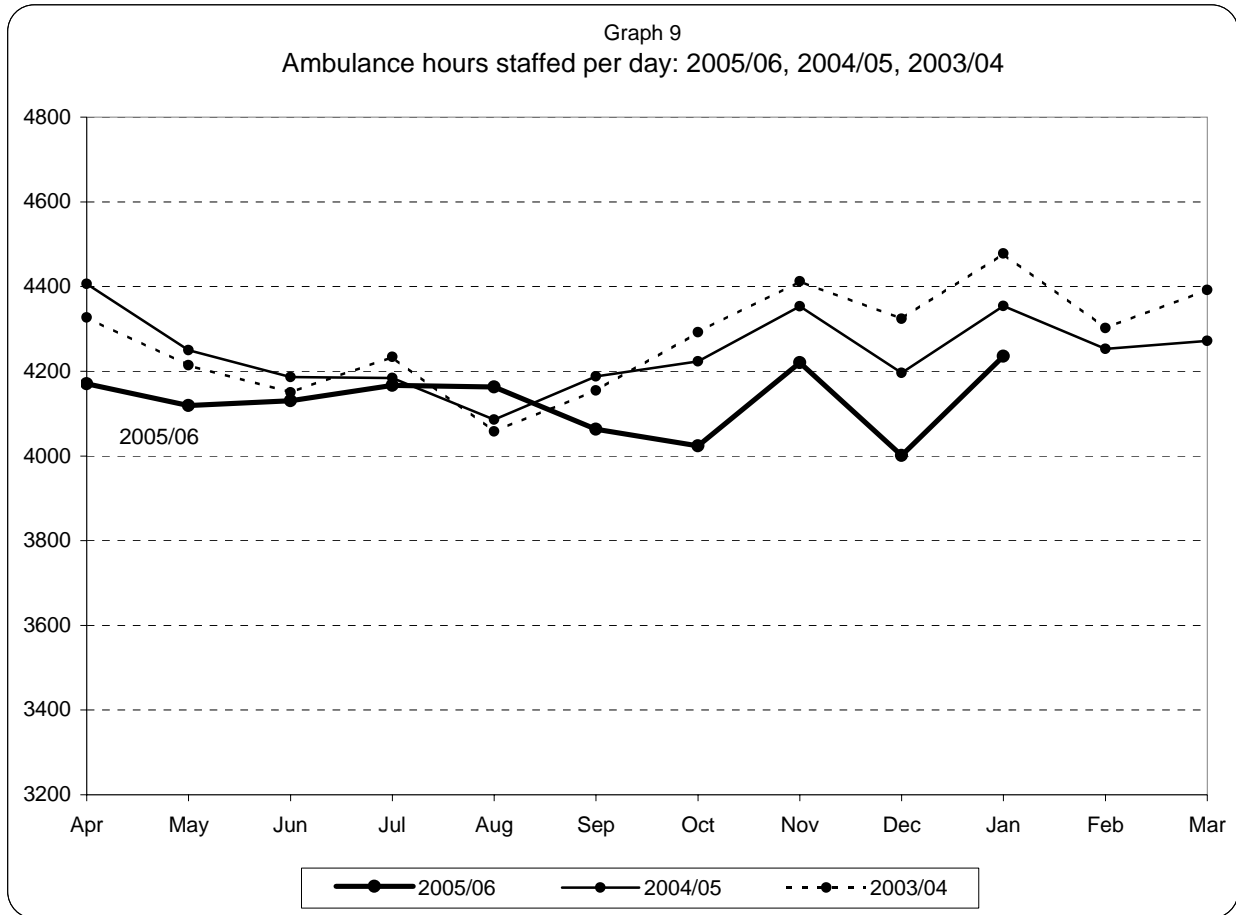
**London Ambulance Service NHS Trust
Accident and Emergency Service
Ambulance and FRU staffing**



Note:

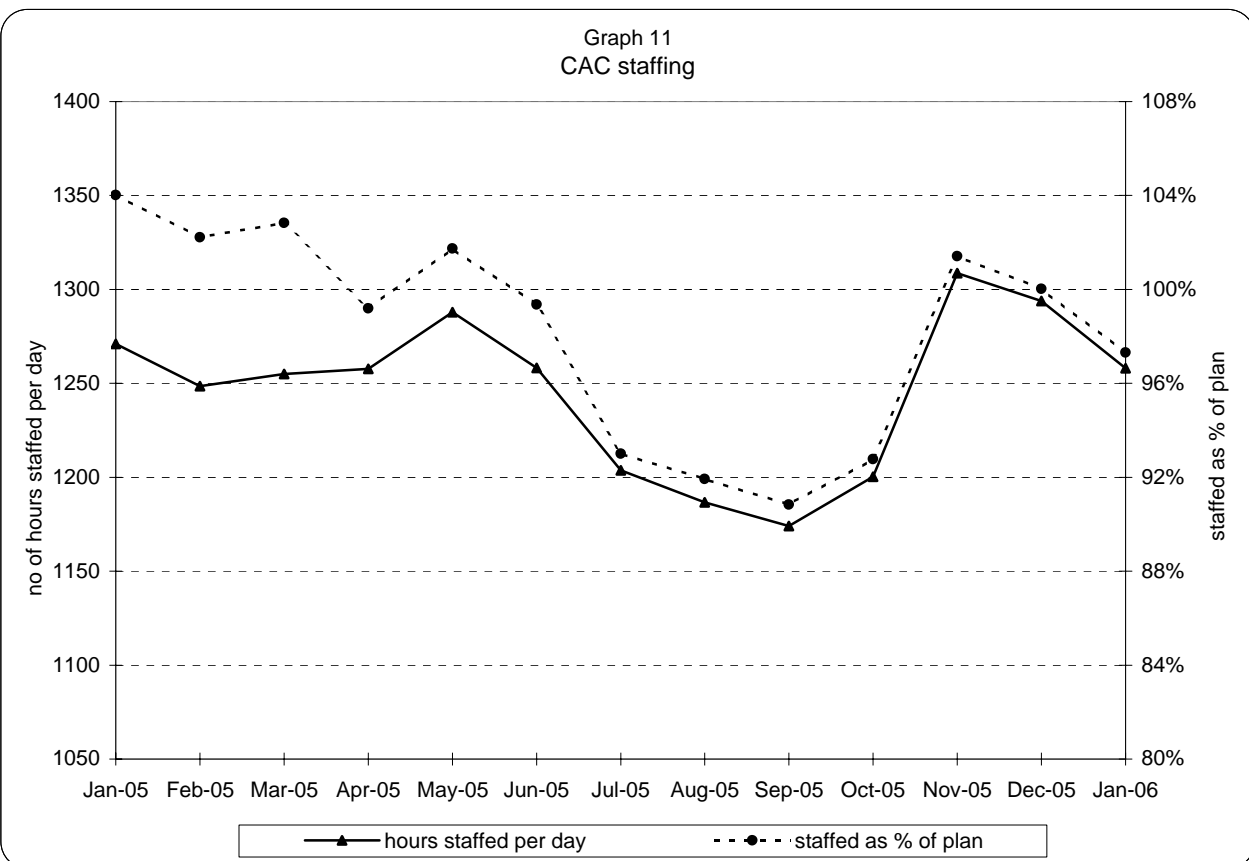
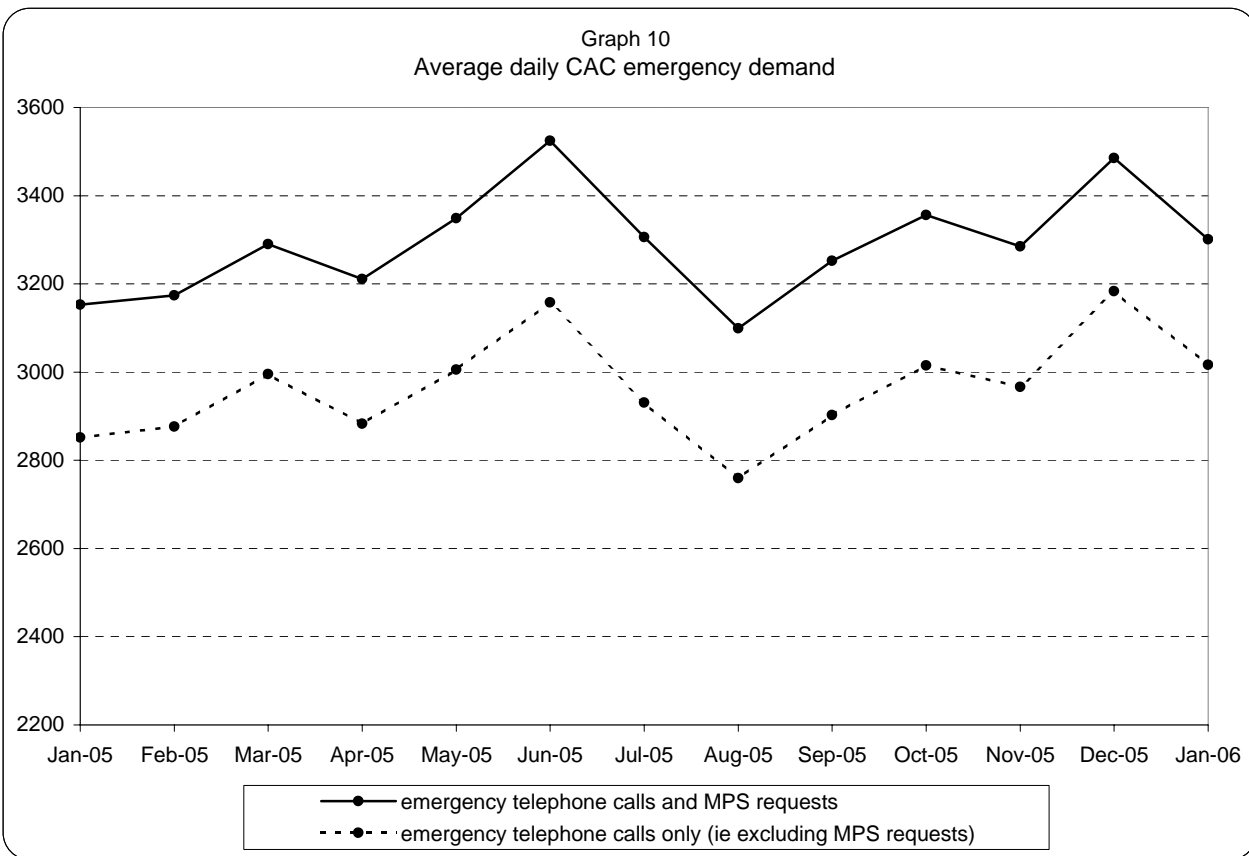
1) staffed = plan + additional - unmanned - single

**London Ambulance Service NHS Trust
Accident and Emergency Service
Yearly comparison of ambulance staffing**

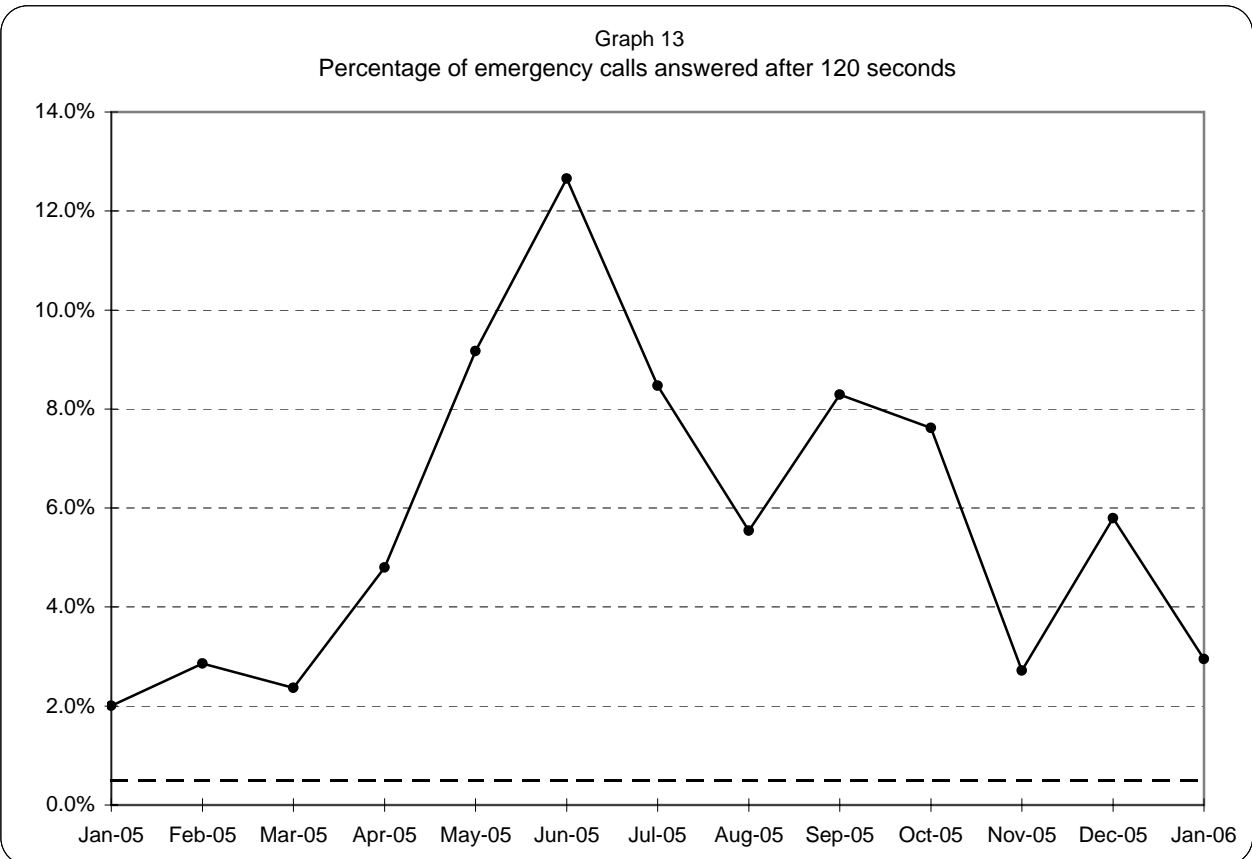
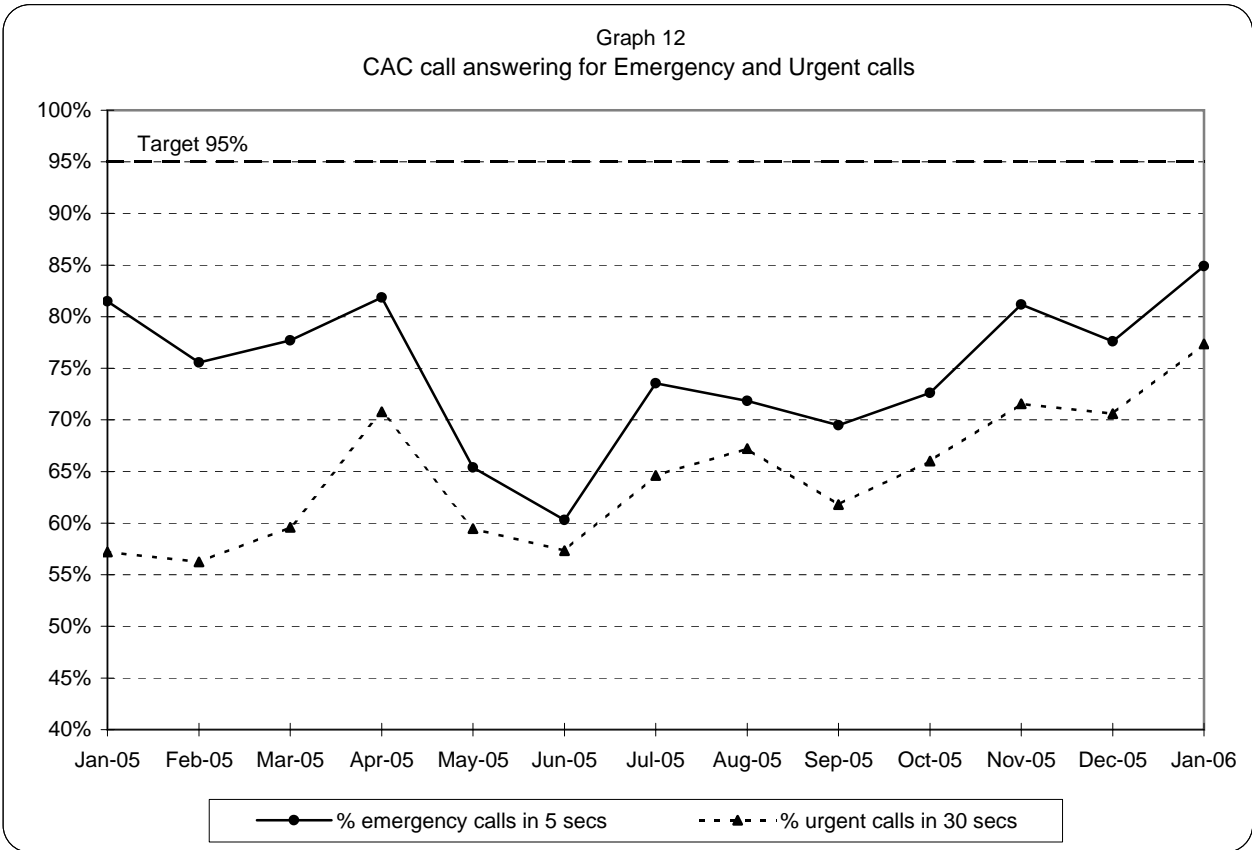


Note:staffed = plan + additional - unmanned - single

**London Ambulance Service NHS Trust
Accident and Emergency Service
CAC activity and staffing**



**London Ambulance Service NHS Trust
Accident and Emergency Service
CAC call answering performance**



Note: 95% target applies to both Emergency and Urgent call answering

London Ambulance Service NHS Trust
Accident and Emergency Service
Category A activity and performance by Primary Care Trust

Table 3

		November 2006		December 2005		January so far 2006		Year to date	
		Cat A resp	% cat A resp in 8 mins	Cat A resp	% cat A resp in 8 mins	Cat A resp	% cat A resp in 8 mins	Cat A resp	% cat A resp in 8 mins
5K5	Brent PCT	921	75%	1,044	68%	596	74%	9,140	68%
5HX	Ealing PCT	975	70%	1,130	67%	629	72%	9,752	69%
5H1	Hammersmith & Fulham PCT	557	82%	642	79%	361	76%	5,602	79%
5K6	Harrow PCT	601	79%	685	79%	421	80%	5,860	78%
5AT	Hillingdon PCT	933	74%	1,015	73%	594	75%	8,649	72%
5HY	Hounslow PCT	707	76%	739	74%	463	75%	6,909	74%
5LA	Kensington & Chelsea PCT	461	74%	480	74%	298	74%	4,365	75%
5LC	Westminster PCT	1,139	72%	1,184	74%	692	76%	10,868	77%
North West London Strategic HA		6,294	74%	6,919	73%	4,054	75%	61,145	73%
5A9	Barnet PCT	899	67%	989	65%	549	66%	8,540	66%
5K7	Camden PCT	812	83%	964	82%	510	81%	8,276	84%
5C1	Enfield PCT	940	71%	1,055	71%	569	75%	8,695	74%
5C9	Haringey PCT	844	73%	1,032	68%	545	72%	8,412	73%
5K8	Islington PCT	719	80%	776	74%	478	80%	7,243	80%
North Central London Strategic HA		4,214	74%	4,816	72%	2,651	75%	41,166	75%
5C2	Barking & Dagenham PCT	678	72%	748	70%	433	73%	6,329	71%
5C3	City & Hackney PCT	883	69%	1,071	67%	580	74%	9,052	70%
5A4	Havering PCT	600	69%	763	62%	450	66%	6,069	69%
5C5	Newham PCT	1,020	71%	1,046	68%	573	71%	9,606	71%
5NA	Redbridge PCT	763	74%	780	72%	507	71%	6,975	74%
5C4	Tower Hamlets PCT	834	70%	986	64%	593	70%	8,229	70%
5NC	Waltham Forest PCT	788	73%	865	72%	504	71%	7,175	74%
North East London Strategic HA		5,566	71%	6,259	68%	3,640	71%	53,435	71%
5AX	Bexley PCT	568	76%	703	74%	409	79%	5,659	78%
5A7	Bromley PCT	837	73%	903	67%	498	76%	7,559	73%
5A8	Greenwich PCT	811	75%	981	74%	529	75%	8,076	74%
5LD	Lambeth PCT	1,035	68%	1,150	69%	613	76%	10,337	73%
5LF	Lewisham PCT	827	72%	986	69%	564	76%	8,285	74%
5LE	Southwark PCT	1,116	77%	1,159	73%	639	80%	10,326	78%
South East London Strategic HA		5,194	73%	5,882	71%	3,252	77%	50,242	75%
5K9	Croydon PCT	1,091	66%	1,271	62%	663	69%	10,144	67%
5A5	Kingston PCT	378	73%	470	74%	265	77%	3,784	74%
5M6	Richmond & Twickenham PCT	413	74%	498	68%	272	72%	3,988	69%
5M7	Sutton & Merton PCT	959	75%	1,077	73%	640	80%	9,002	78%
5LG	Wandsworth PCT	808	70%	835	71%	483	76%	7,549	74%
South West London Strategic HA		3,649	71%	4,151	69%	2,323	75%	34,467	73%
	Lowest (excl out of London)		66%		62%		66%		66%
	Highest (excl out of London)		83%		82%		81%		84%
	Range		16%		20%		16%		17%