

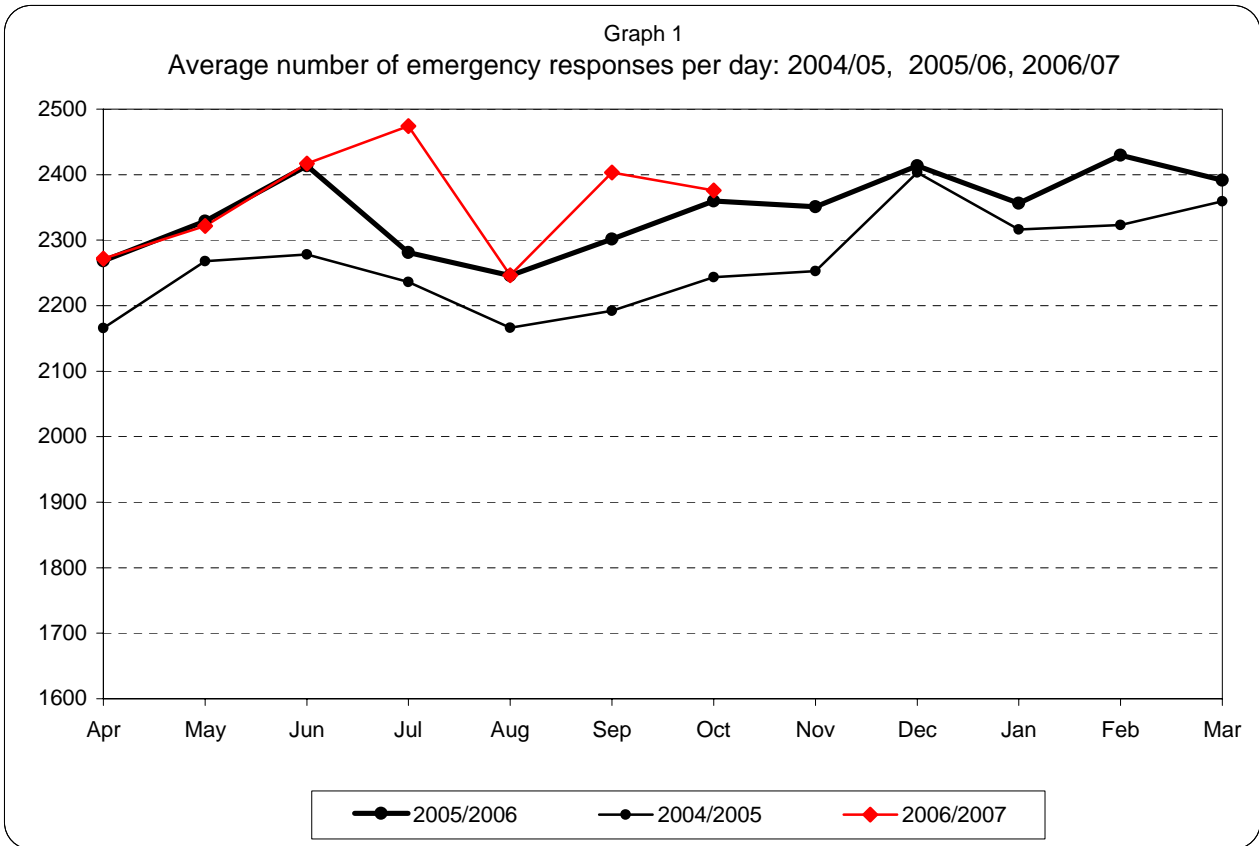


London Ambulance Service
NHS Trust

Information Pack for Trust Board

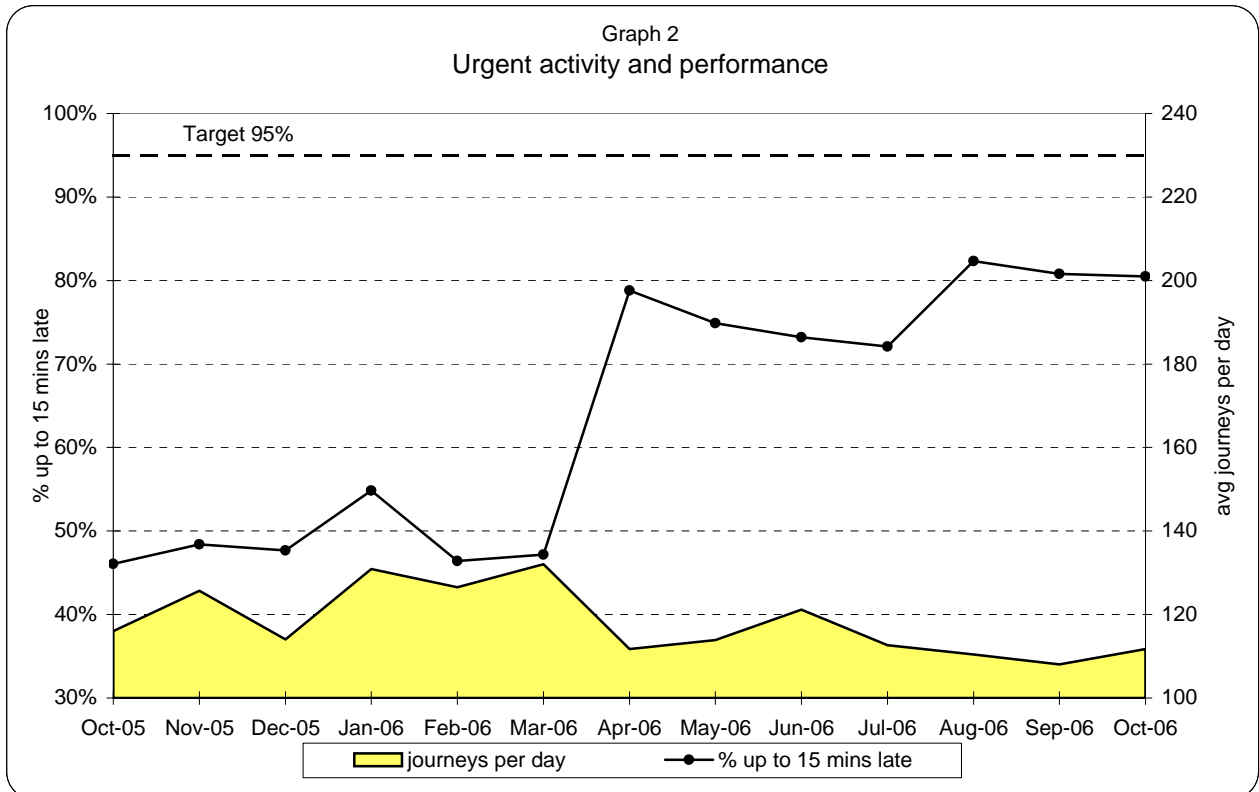
October 2006

**London Ambulance Service NHS Trust
Accident and Emergency Service
Emergency activity and Urgent activity and performance**

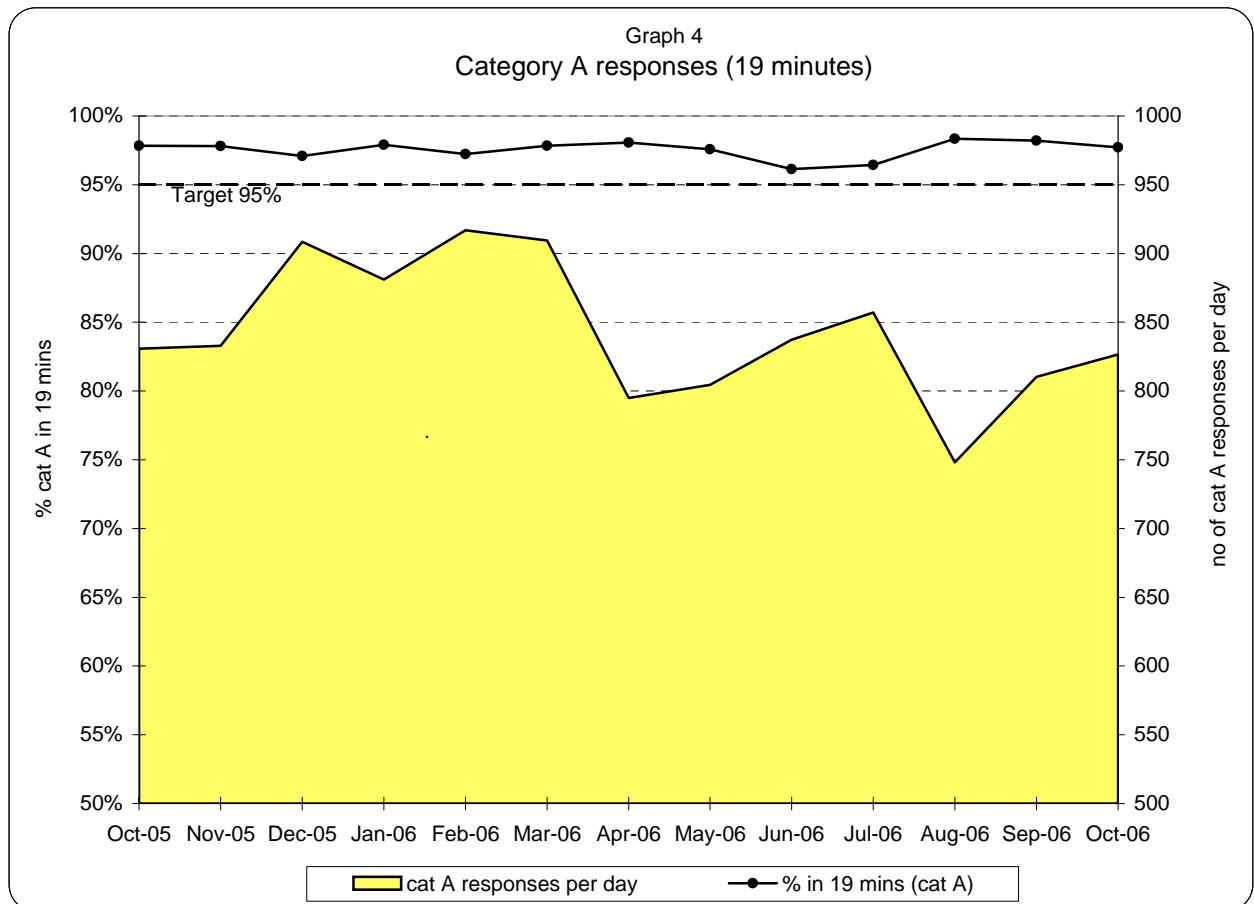
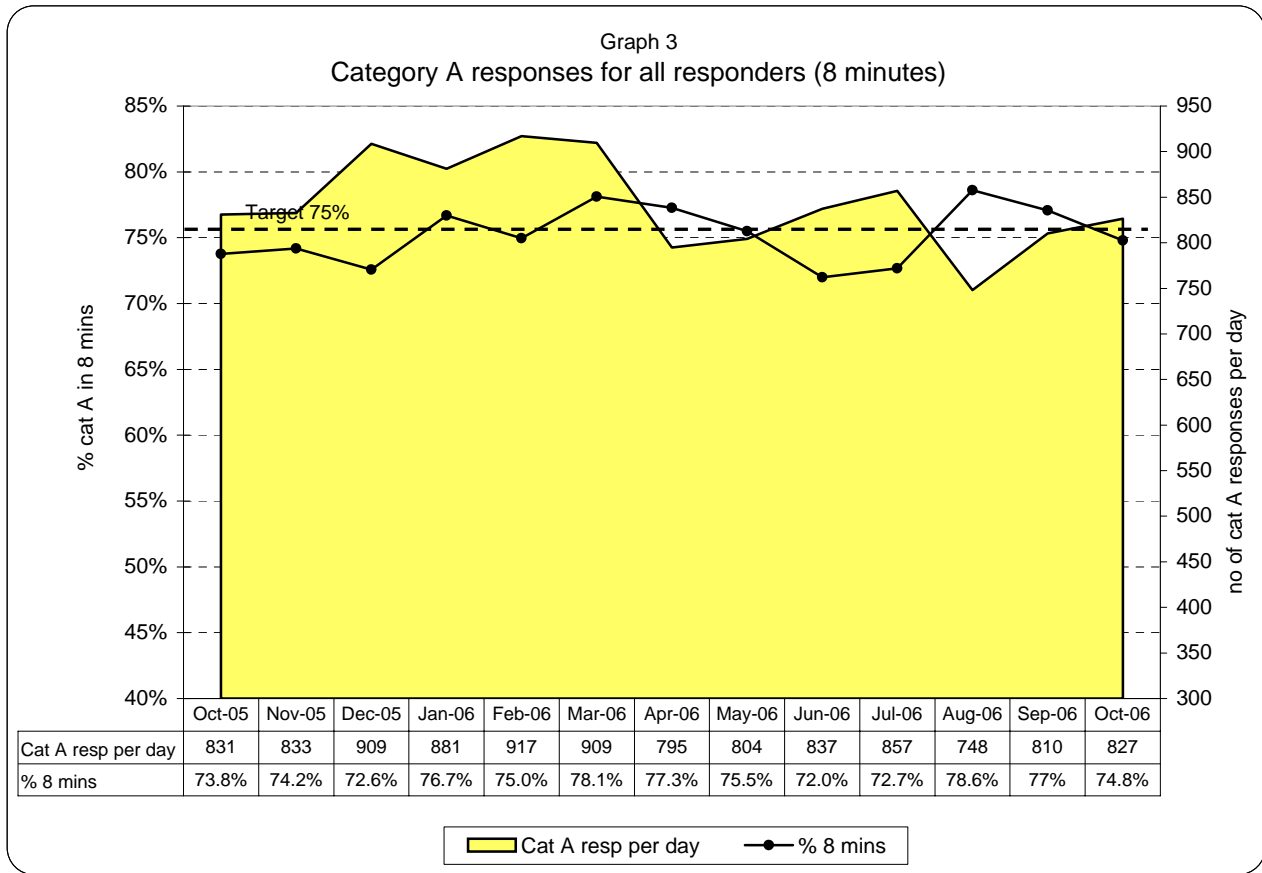


Emergency responses: monthly and year to date comparison

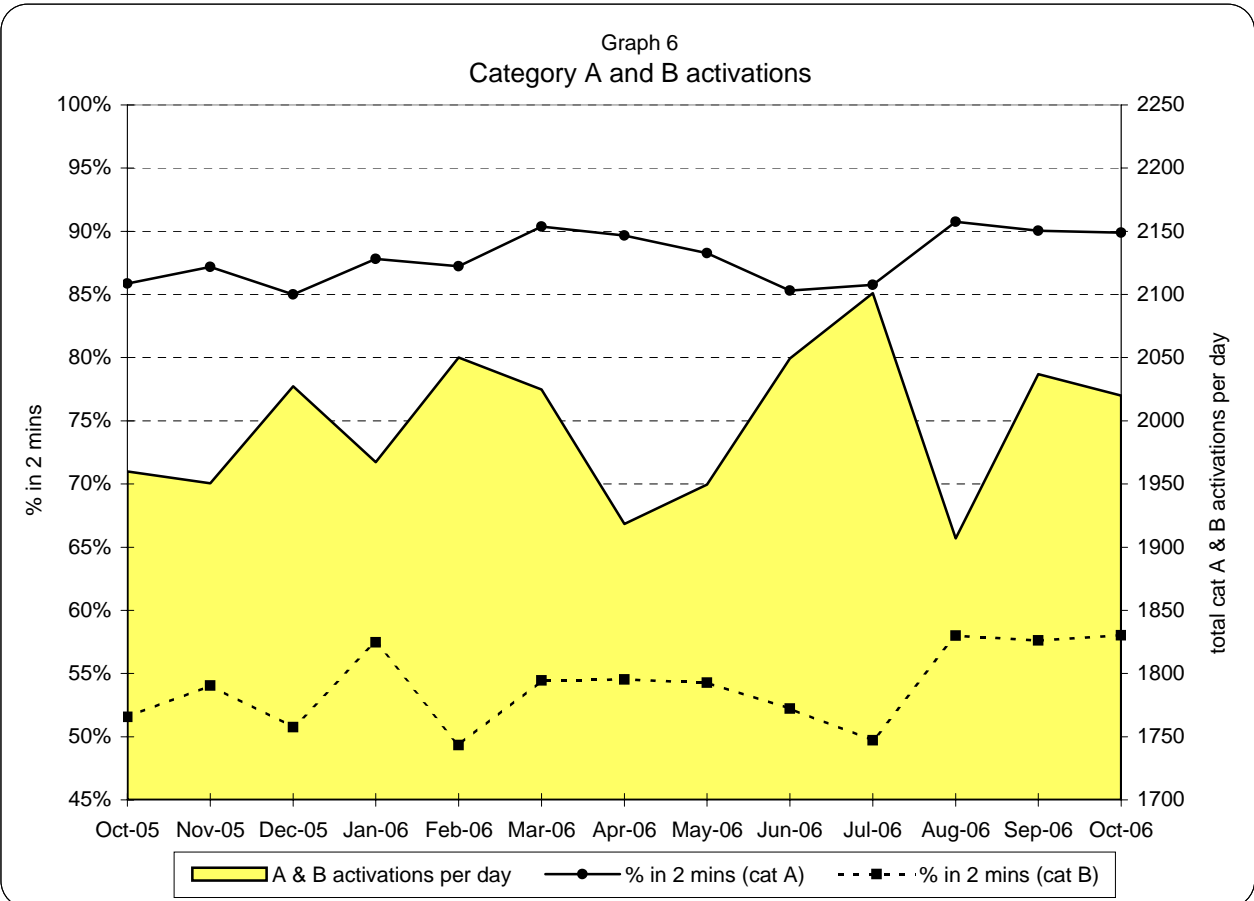
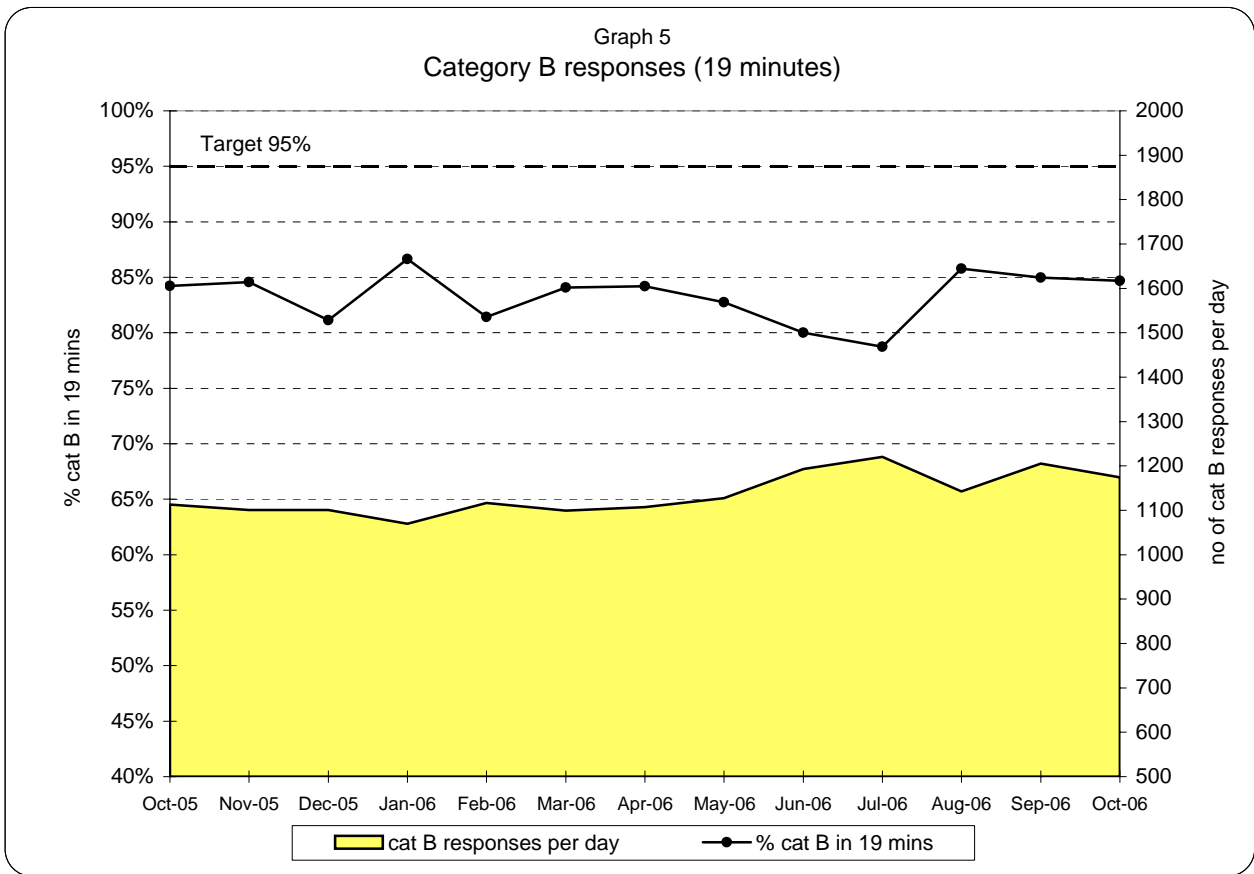
Oct 06 v Oct 05	Apr 06-Oct 06 v Apr 05-Oct 05
+0.7%	+1.9%



**London Ambulance Service NHS Trust
Accident and Emergency Service
Emergency responses: 8 and 19 minute response activity and performance**

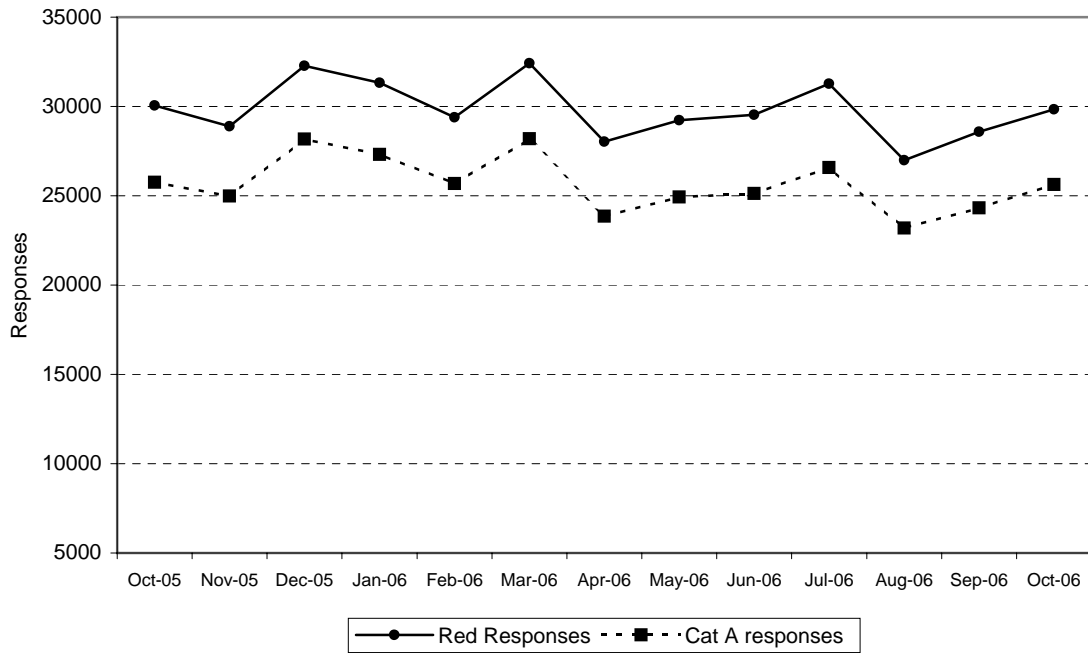


**London Ambulance Service NHS Trust
Accident and Emergency Service
19 minute response activity and performance (Cat B) and Cat A and B activations**

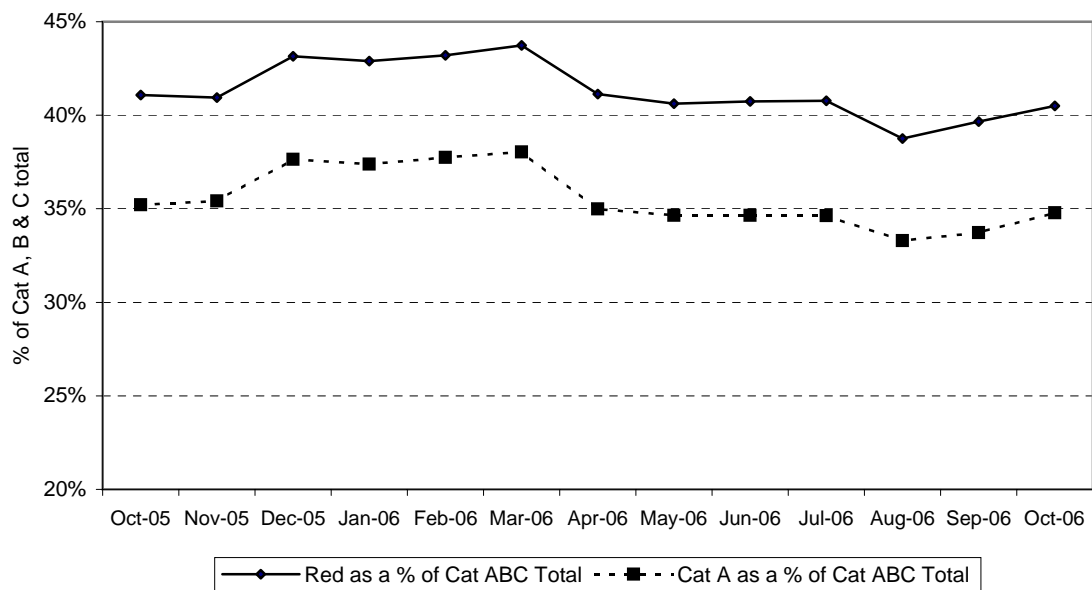


**London Ambulance Service NHS Trust
Accident and Emergency Service
Category A and Red Responses**

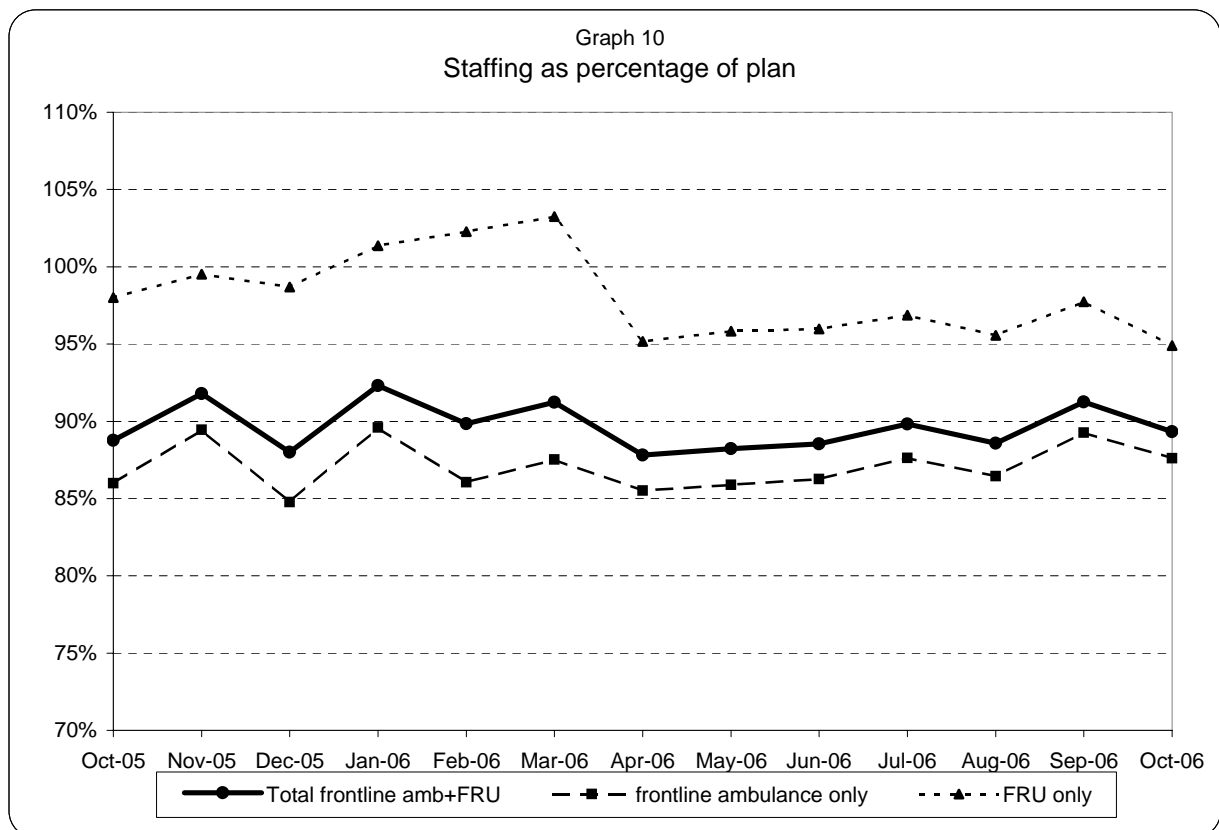
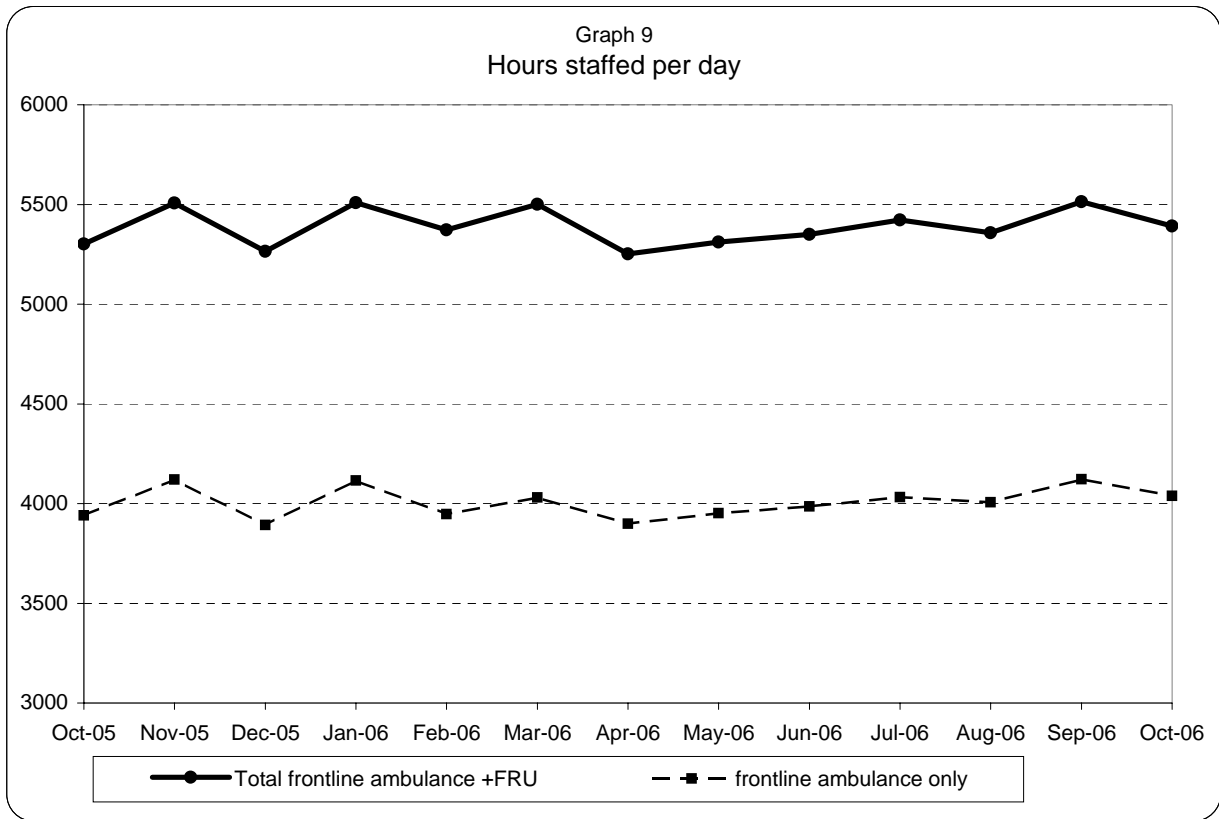
Graph 7
Total Category A and Red Responses



Graph 8
Category A and Red Responses as a percentage of the total Cat A, B & C demand

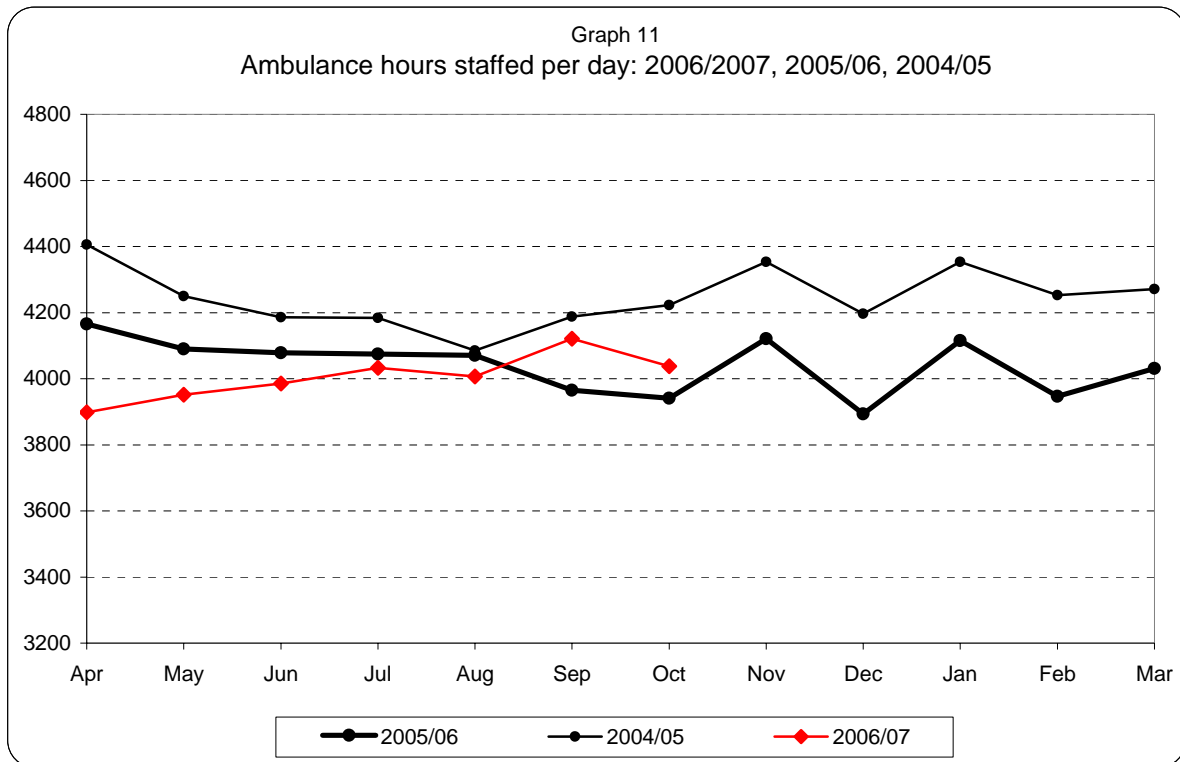


**London Ambulance Service NHS Trust
Accident and Emergency Service
Ambulance and FRU staffing**



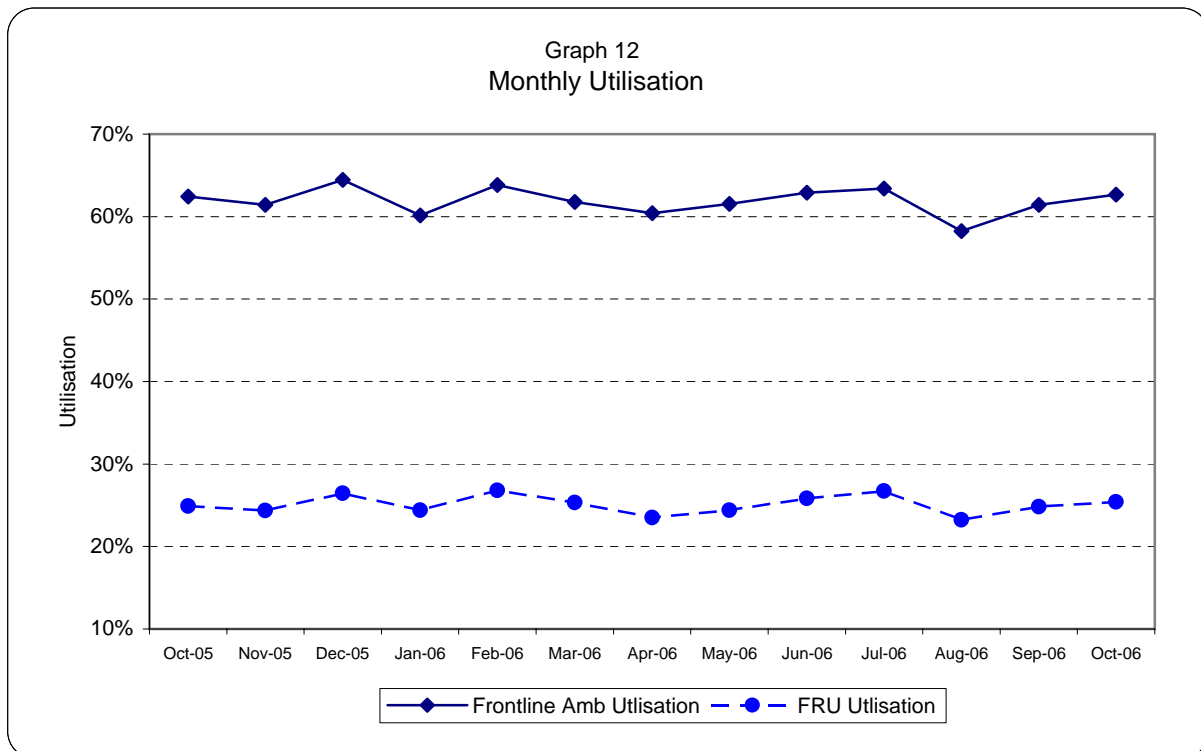
Note: staffed = (plan + additional - unmanned - single)/plan

**London Ambulance Service NHS Trust
Accident and Emergency Service
Yearly comparison of ambulance staffing and Average Monthly Utilisation**

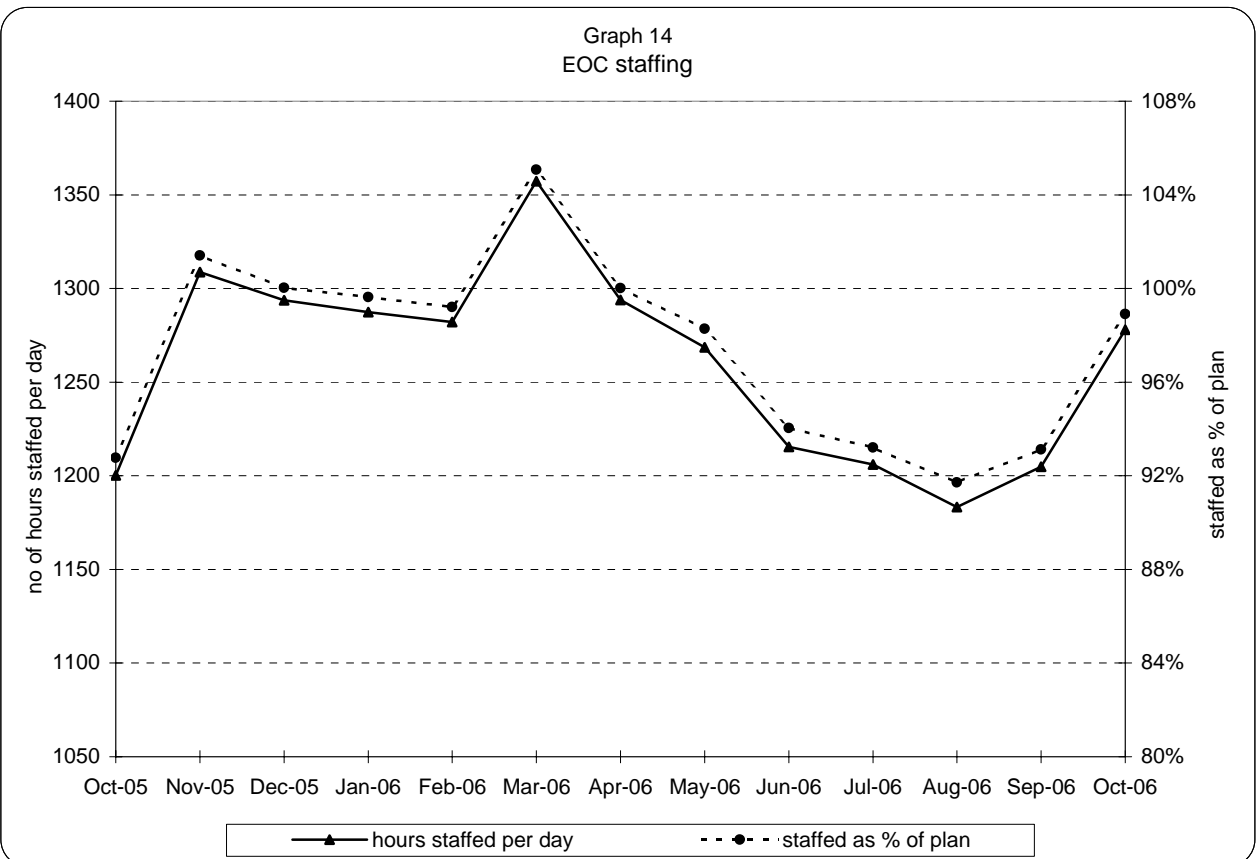
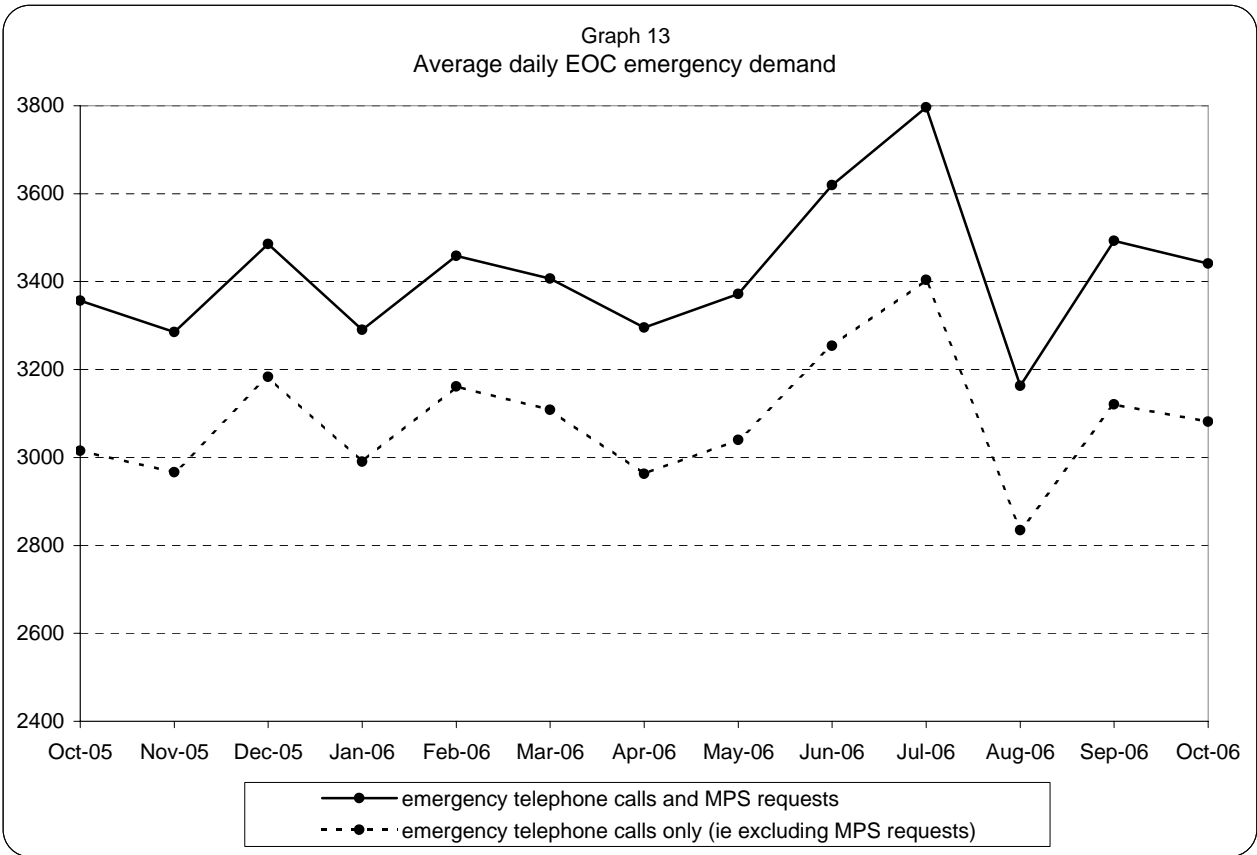


Note: staffed = plan + additional - unmanned - single

The 04/05 figures are taken from the old manning system. 05/06 figures onwards are from the new system

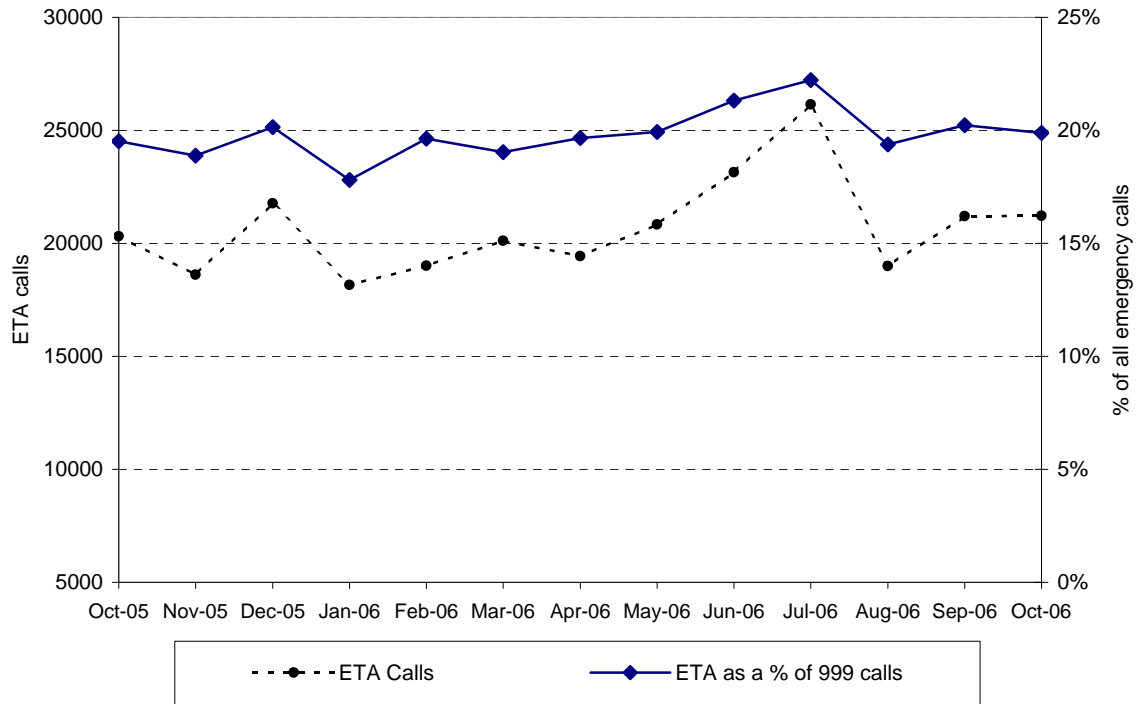


**London Ambulance Service NHS Trust
Accident and Emergency Service
EOC activity and staffing**

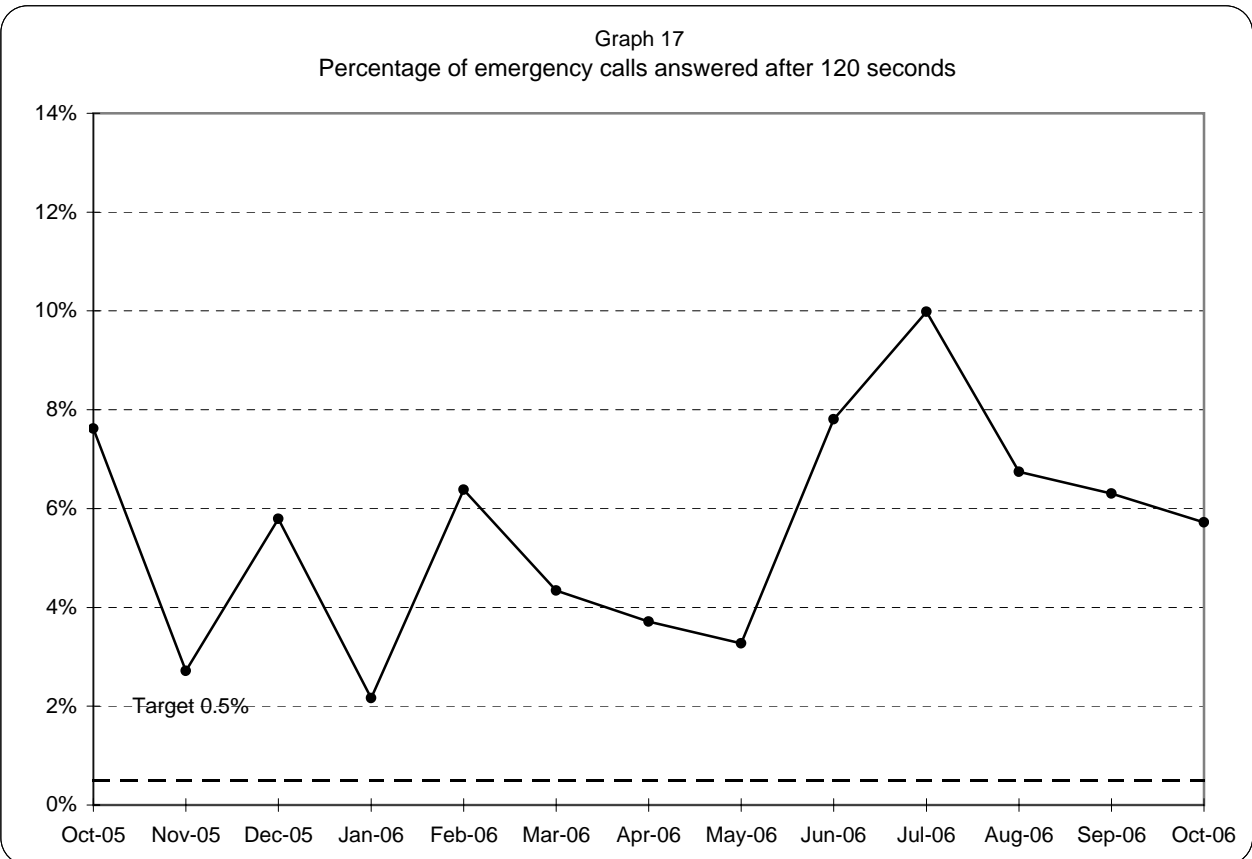
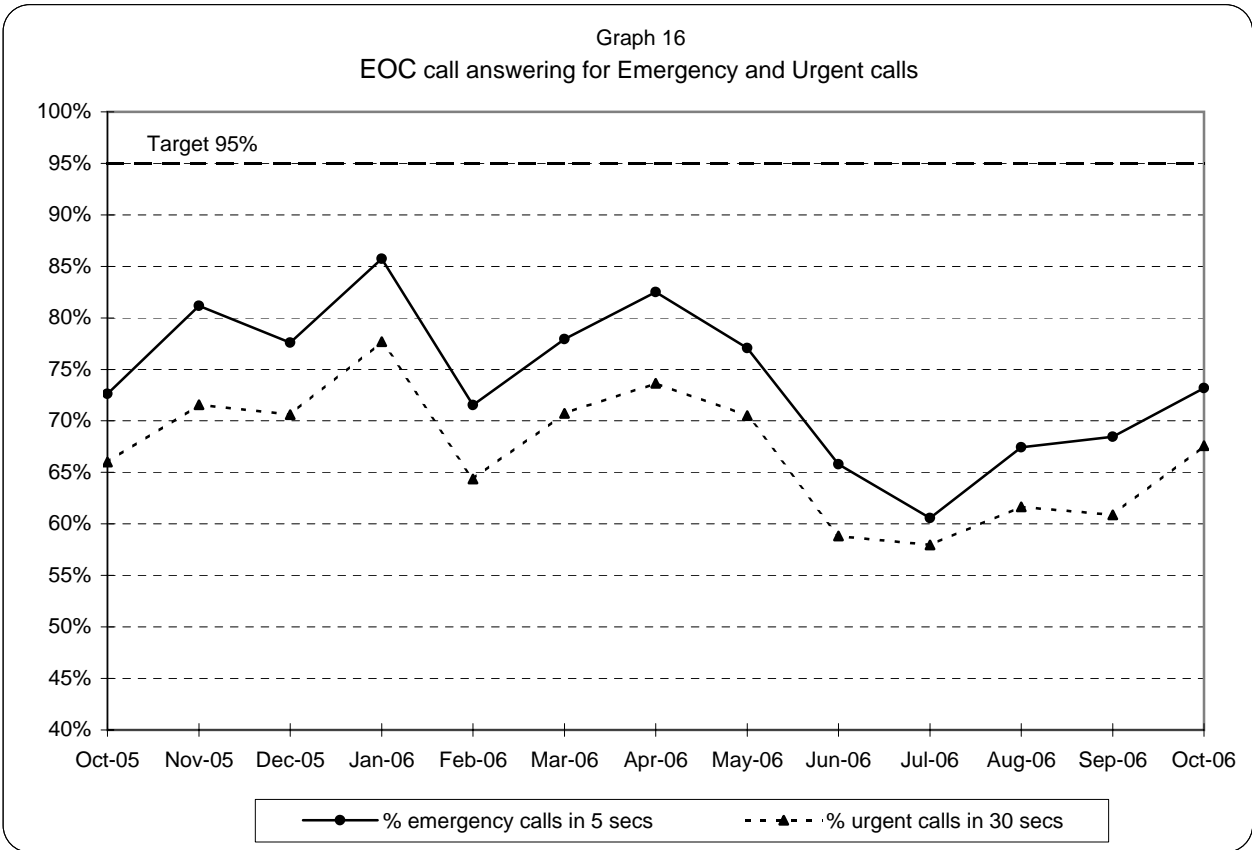


**London Ambulance Service NHS Trust
Accident and Emergency Service
ETA calls as a percentage of all emergency calls**

Graph 15
ETA calls as a percentage of all emergency calls



**London Ambulance Service NHS Trust
Accident and Emergency Service
EOC call answering performance**



Note: 95% target applies to both Emergency and Urgent call answering

London Ambulance Service NHS Trust
Accident and Emergency Service
Category A activity and performance by Primary Care Trust

Table 1

		Aug-06			Sep-06			Oct-06			Year to date		
		Cat A resp	Cat A in 8	% cat A resp in 8 mins	Cat A resp	Cat A in 8	% cat A resp in 8 mins	Cat A resp	Cat A in 8	% cat A resp in 8 mins	Cat A resp	Cat A in 8	% cat A resp in 8 mins
5K5	Brent PCT	863	633	73%	865	657	76%	946	684	72%	6,357	4,607	72%
5HX	Ealing PCT	929	726	78%	976	712	73%	1,028	747	73%	7,019	5,139	73%
5H1	Hammersmith & Fulham PCT	566	485	86%	589	454	77%	646	483	75%	4,198	3,303	79%
5K6	Harrow PCT	563	464	82%	581	487	84%	577	474	82%	4,112	3,335	81%
5AT	Hillingdon PCT	834	634	76%	929	696	75%	915	670	73%	6,327	4,718	75%
5HY	Hounslow PCT	634	520	82%	735	559	76%	771	573	74%	5,076	3,853	76%
5LA	Kensington & Chelsea PCT	443	334	75%	404	309	76%	481	364	76%	3,114	2,356	76%
5LC	Westminster PCT	1,127	902	80%	1,062	864	81%	1,143	854	75%	7,879	6,170	78%
North West London Strategic HA		5,959	4,698	79%	6,141	4,738	77%	6,507	4,849	75%	44,082	33,481	76%
5A9	Barnet PCT	852	605	71%	887	633	71%	911	630	69%	6,404	4,475	70%
5K7	Camden PCT	791	673	85%	811	714	88%	918	747	81%	5,993	5,071	85%
5C1	Enfield PCT	792	616	78%	849	693	82%	918	740	81%	6,143	4,782	78%
5C9	Haringey PCT	723	561	78%	846	659	78%	878	654	74%	5,937	4,454	75%
5K8	Islington PCT	723	621	86%	736	609	83%	822	655	80%	5,415	4,392	81%
North Central London Strategic HA		3,881	3,076	79%	4,129	3,308	80%	4,447	3,426	77%	29,892	23,174	78%
5C2	Barking & Dagenham PCT	608	456	75%	650	489	75%	661	482	73%	4,578	3,363	73%
5C3	City & Hackney PCT	841	676	80%	955	692	72%	962	711	74%	6,655	4,887	73%
5A4	Havering PCT	593	425	72%	600	438	73%	612	450	74%	4,306	3,086	72%
5C5	Newham PCT	865	674	78%	966	738	76%	1,016	741	73%	6,830	4,899	72%
5NA	Redbridge PCT	683	512	75%	716	549	77%	727	530	73%	4,907	3,604	73%
5C4	Tower Hamlets PCT	809	588	73%	857	590	69%	814	552	68%	5,871	4,051	69%
5NC	Waltham Forest PCT	701	532	76%	758	595	78%	767	551	72%	5,392	4,009	74%
North East London Strategic HA		5,100	3,863	76%	5,502	4,091	74%	5,559	4,017	72%	38,539	27,899	72%
5AX	Bexley PCT	557	459	82%	540	438	81%	635	479	75%	4,095	3,215	79%
5A7	Bromley PCT	773	591	76%	734	540	74%	835	581	70%	5,561	4,020	72%
5A8	Greenwich PCT	712	555	78%	762	588	77%	837	591	71%	5,629	4,270	76%
5LD	Lambeth PCT	951	775	81%	1,033	825	80%	1,082	765	71%	7,324	5,531	76%
5LF	Lewisham PCT	816	672	82%	812	605	75%	850	641	75%	5,817	4,324	74%
5LE	Southwark PCT	1,029	833	81%	1,053	828	79%	1,089	821	75%	7,573	5,779	76%
South East London Strategic HA		4,838	3,885	80%	4,934	3,824	78%	5,328	3,878	73%	35,999	27,139	75%
5K9	Croydon PCT	975	770	79%	1,069	801	75%	1,111	774	70%	7,187	5,345	74%
5A5	Kingston PCT	383	295	77%	402	323	80%	377	280	74%	2,710	2,062	76%
5M6	Richmond & Twickenham PCT	441	334	76%	405	309	76%	446	322	72%	2,935	2,110	72%
5M7	Sutton & Merton PCT	814	670	82%	901	710	79%	968	684	71%	6,412	4,911	77%
5LG	Wandsworth PCT	745	601	81%	765	598	78%	819	590	72%	5,440	4,132	76%
South West London Strategic HA		3,358	2,670	80%	3,542	2,741	77%	3,721	2,650	71%	24,684	18,560	75%
	Lowest (excl out of London)			71%			69%			68%			69%
	Highest (excl out of London)			86%			88%			82%			85%
	Range			15%			19%			14%			16%