



# GP News



*"The London Ambulance Service believes it is important to keep in touch with GPs. We hope you enjoy this month's newsletter and we welcome your feedback."*

## Coordinate My Care

**Coordinate My Care (CMC) records** are care plans for those with a short life expectancy. CMC is an NHS project led by the Royal Marsden Hospital to try and improve the quality of life for patients with life-limiting conditions. It allows secure, web-based access to a database of care plans that can be uploaded by the patient's **GP or other care teams** to a secure server once the patient has consented to information being shared.



This will further enable crew staff (VCS) to ensure that the care they offer to a patient is in line with that agreed by the clinicians looking after that patient, and we do not add further distress to the patient or their family with **avoidable hospital admissions**. In London around 60% of patients are dying in hospital against their wishes. For the patients with care plans recorded on CMC this is reduced to 17%, with the majority dying where they had expressed a wish to die. **NB. Faxed palliative care handover forms will no longer be accepted after 1st May other than by prior arrangement.**

Read more: [www.royalmarsden.nhs.uk/consultants-teams-wards/clinical-services/pages/coordinate-my-care.aspx](http://www.royalmarsden.nhs.uk/consultants-teams-wards/clinical-services/pages/coordinate-my-care.aspx)

## Diabetes update

In October 2012 the new diabetes referral pathways were launched by the LAS. These consisted of three new types of referrals direct to GP's pan London:

**Hypoglycaemia – 1)** Insulin dependent diabetic patients seen & treated for an episode of hypoglycaemia within the community receive a 2 hour telephone welfare check and faxed GP referral for follow up. Approximately 50% of those patients seen and treated for hypoglycaemia within the community are currently being referred to GP's. The pathway has been received positively by all involved from LAS staff to patients and GP's and it is hoped that it can be rolled out to non insulin dependent diabetics in the near future.

**Hyperglycaemia –** Patients seen by LAS crews within the community who have a raised blood sugar reading and are NOT already diagnosed with diabetes with values of:

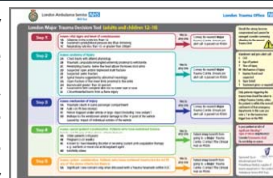
- 2) 8 - 12.9mmols – retrospective GP referral within one month
- 3) 13 - 25mmols – faxed GP referral within 24hrs

Despite the number of referrals being less than anticipated and issues surrounding data capture the pathway has also been received positively by patients and GP's. It is hoped that issues can be resolved and more referrals being made to GP's.



## Major trauma tool

Major Trauma is a rare event with under 4 of these patients per day in London. It crosses anatomical boundaries and often requires the clinical input of multiple specialities. Since April 2010 Major Trauma Care has been concentrated in four multi-disciplinary hospital designated **Major Trauma Centres (MTC)**. The London Trauma Decision Tool was developed by the Healthcare for London Major Trauma Programme Pre-Hospital Care Group and the London Ambulance Service. It determines which patients need to be conveyed direct to an MTC. The LAS recently undertook a review of the accuracy of the triage tool, which involved identifying the pre-hospital trigger and matching it with patient ultimate injuries and outcome. The tool has proved to be accurate, but has been enhanced by printing a **child (<12yrs) triage tool** on the back. In the first year of operation the London Trauma System showed an increase in patients surviving major trauma. Read more: [www.londonambulance.nhs.uk/calling\\_999/emergency\\_trauma\\_care.aspx](http://www.londonambulance.nhs.uk/calling_999/emergency_trauma_care.aspx)



### LAS Website

Read more about the subjects covered:

[www.londonambulance.nhs.uk](http://www.londonambulance.nhs.uk)

### LAS contact details

**Address:**  
220 Waterloo Road  
London  
SE1 8SD



**Tel:**  
020 7783 2000



Please send enquiries to:  
[LAS.GP-Enquiry@lond-amb.nhs.uk](mailto:LAS.GP-Enquiry@lond-amb.nhs.uk)



### Long-term care event

Guy's Hospital, 25 March 6pm

Join us at a free event to find out about how we work to improve care for patients with chronic illnesses. Hear from Medical Director Fiona Moore and Senior Clinical Advisor David Whitmore. Please visit the *Events & Meetings* page on our website to book a place and read about becoming a member.



[www.londonambulance.nhs.uk](http://www.londonambulance.nhs.uk)