



London Ambulance Service
NHS Trust



An evening with us

Getting set for the Games





London Ambulance Service



NHS Trust

Planning for the 2012 Games

Head of Olympic Planning
Peter Thorpe

20 April 2012



Olympic and Paralympic Games Timeline

Lockdown : 17 days
(14-30 June)

Training: 26 days
(1-26 July)

Olympic Games: 17 days
(27 July-12 Aug)

Changeover : 16 days
(13-28 Aug)

Paralympic Games: 12 days
(29 Aug-9 Sept)

Closedown : 5 days
(10-15 Sept)

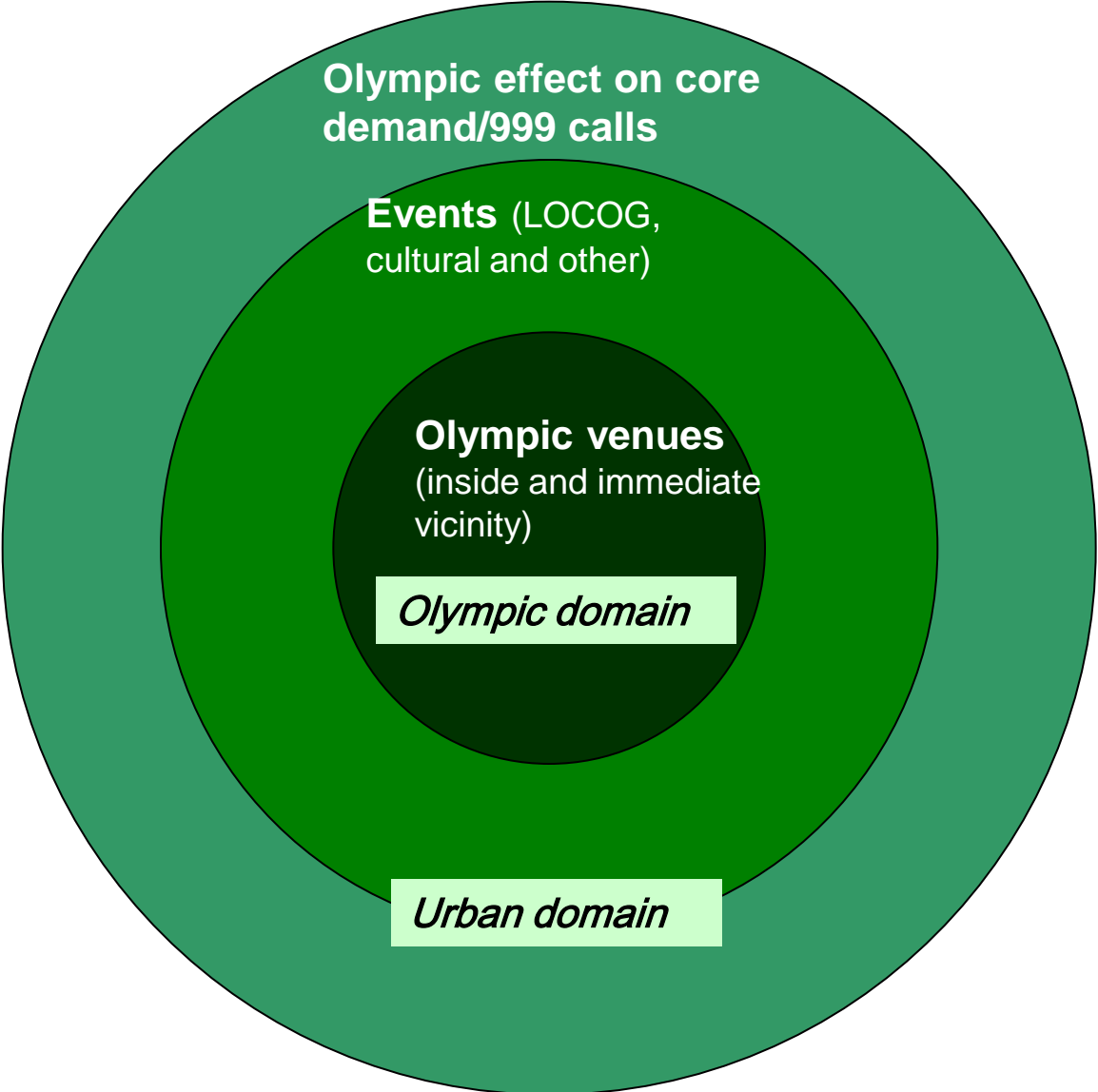
NHS bid commitments

In support of LOCOG at:

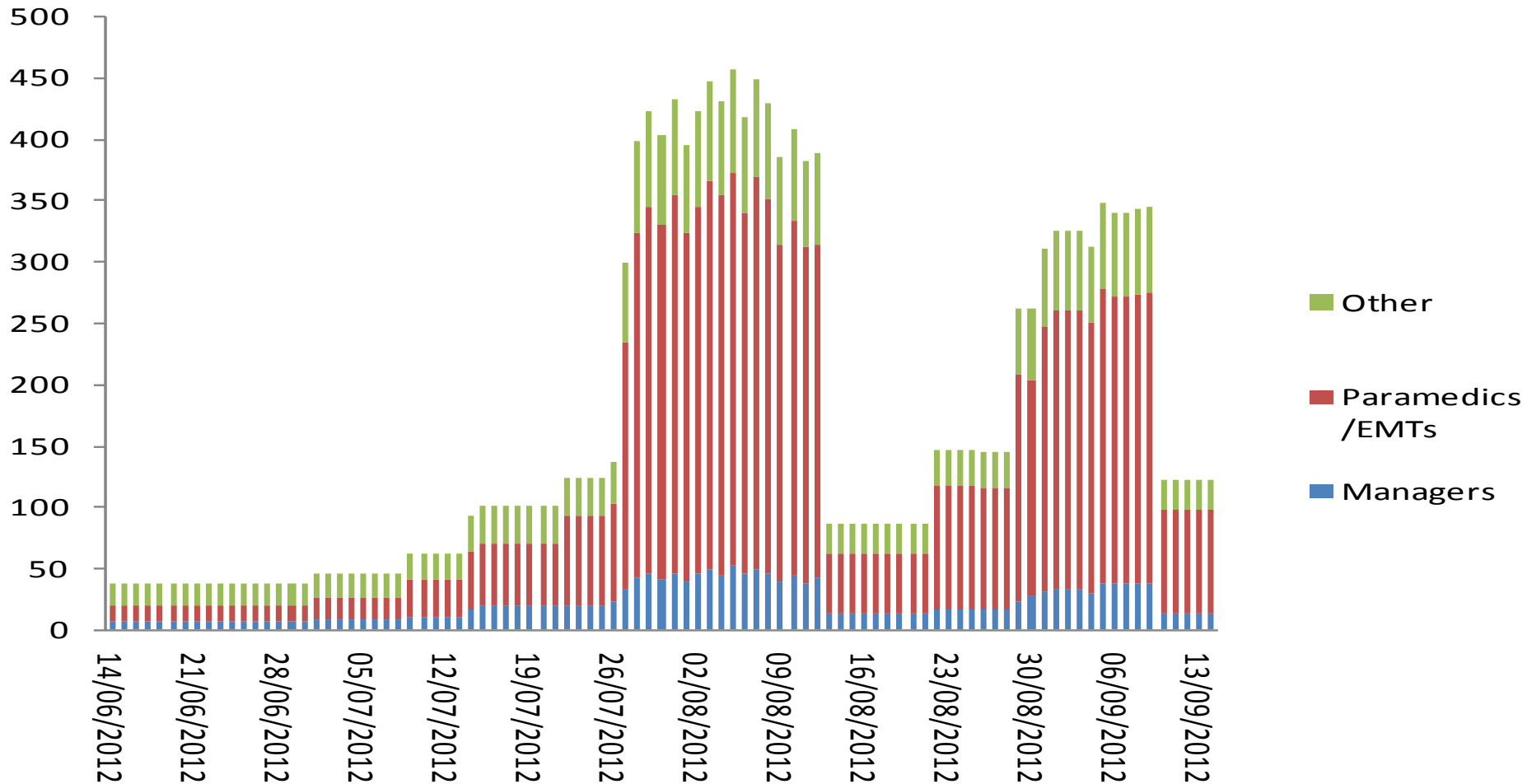
- ticketed and non-ticketed venues inc. non-sport events
- Olympic and Paralympic Park
- Dedicated athlete and spectator ambulances
- Maintain business as usual activity inc. any 'Games effect'



Categories of demand



Venue commitments



'Games effect'

- Reported increase approx 10% (Sydney/Melbourne/Vancouver) for the period of the Games – like NYE
- LAS modelling suggests an increase in demand between 3.6% and 8.9% per day
- Excludes venue activity
- Key dates – e.g. opening and closing nights inc. other events – torch relay, Diamond Jubilee, Notting Hill Carnival, cultural diary



Demand management

- Accept higher utilisation rates
- Use of non-frontline staff
- Voluntary aid support and private providers
- Use 2012 Games as an enabler for change to current response model
- Public education and clear 'signposts' to care



Pre-planned aid

- Over 220 staff coming to London under pre-planned aid
- Model developed based on proportionality and takes into account:
 - size of trust
 - skill mix
- Reporting to Association of Ambulance Chief Executives (AACE)
- Recognised as opportunity to develop clinical leaders of the future



Safety and security

- Integration with national and local command and control structures
- Joint working with other stakeholders
- Infrastructure and logistics integration
- National Olympic Coordination Centre - health representation
- Link to Health Coordination Centre
- National ambulance coordination during games time



Beijing 2008



Beijing 2008

‘The Olympics is not just another event it is significantly different’

General Director Zhang – Beijing EMC

- 191 ambulances
- 989 clinical staff (doctors)
- 20 Olympic hospitals
- 11 rapid response teams 24/7



Lessons from other Games

- Reported flexibility – last minute changes by BOCOG (BEMC)
- Main identified risks in public health rather than major incident (BMBH)
- Health comes below marketing, sponsorship and ticket sales (BOCOG)
- Business as usual approach works (Ambulance Victoria)
- Largest peace-time medical operation in the world (BCAS)
- Look after your staff, they will need it (BCAS)



Venue response and test events

- Supporting LOCOG inside of venues
- Safety and security inside venues as per statutory responsibilities
- Up to 500 staff involved directly in venue cover over two Games periods
- Seconded senior manager in to LOCOG as liaison
- Over 700 of our staff volunteered to join Games cohort



Clinical training



Clinical and operational training

- Clinical staff will receive four days additional clinical training
- Pre-planned aid staff will receive an additional two days clinical familiarisation
- All staff will undertake additional safety and security briefings
- Pre-planned aid training provided by us
- Packages being used by other trusts
- Approved by LOCOG



Testing and exercising

- Full participation in all LOCOG test events
- Health input in CPXs at both local and national level inc. ambulance coordination
- Service attending and participating in structured debriefs
- Ambulance representation in the National Olympic Coordination Centre
- Lessons identified from hot debriefs and written reports shared via UK Ambulance Forum





LONDON
2012



2012

GAMES PLANNING



Contact us at: gamesplanning@londonambulance.nhs.uk

London Ambulance Service NHS Trust

Olympic Games Planning Office

4th Floor 46 Loman Street

London SE1 0EH

Tel: 0207 783 2700

gamesplanning@lond-amb.nhs.uk





London Ambulance Service

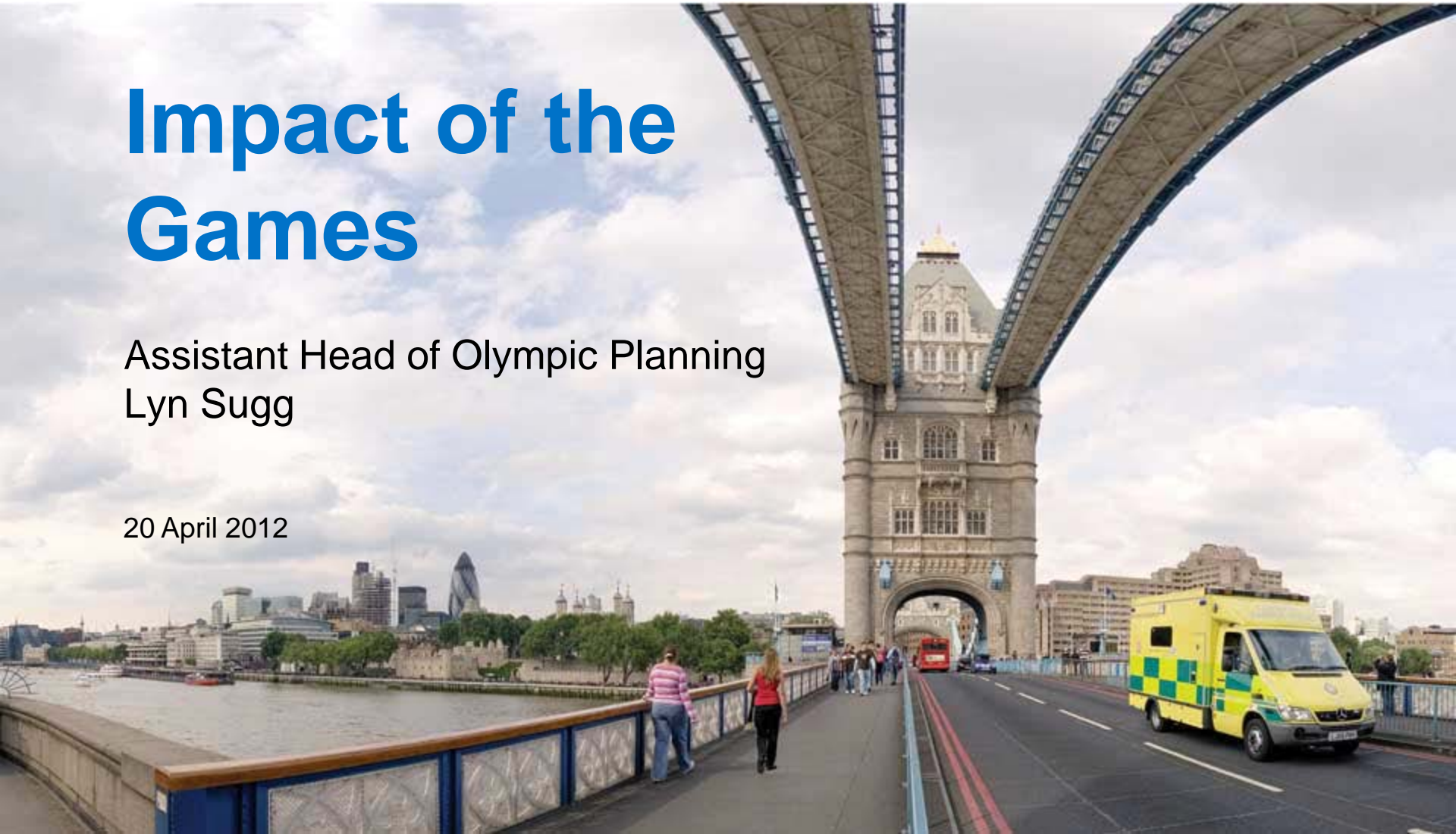


NHS Trust

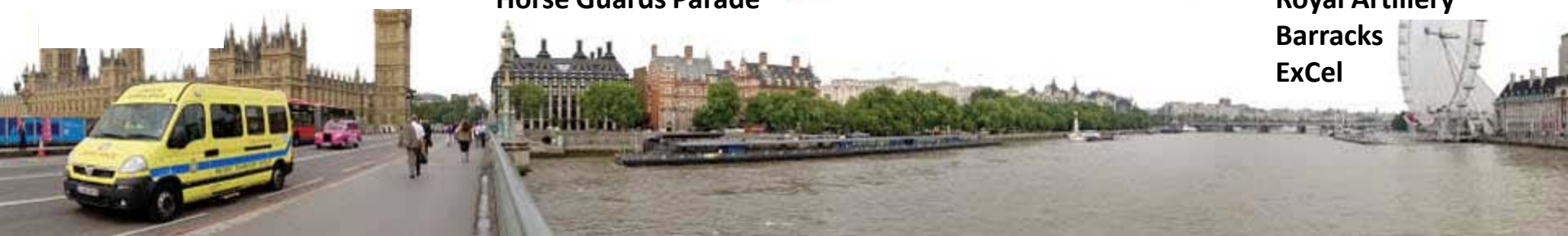
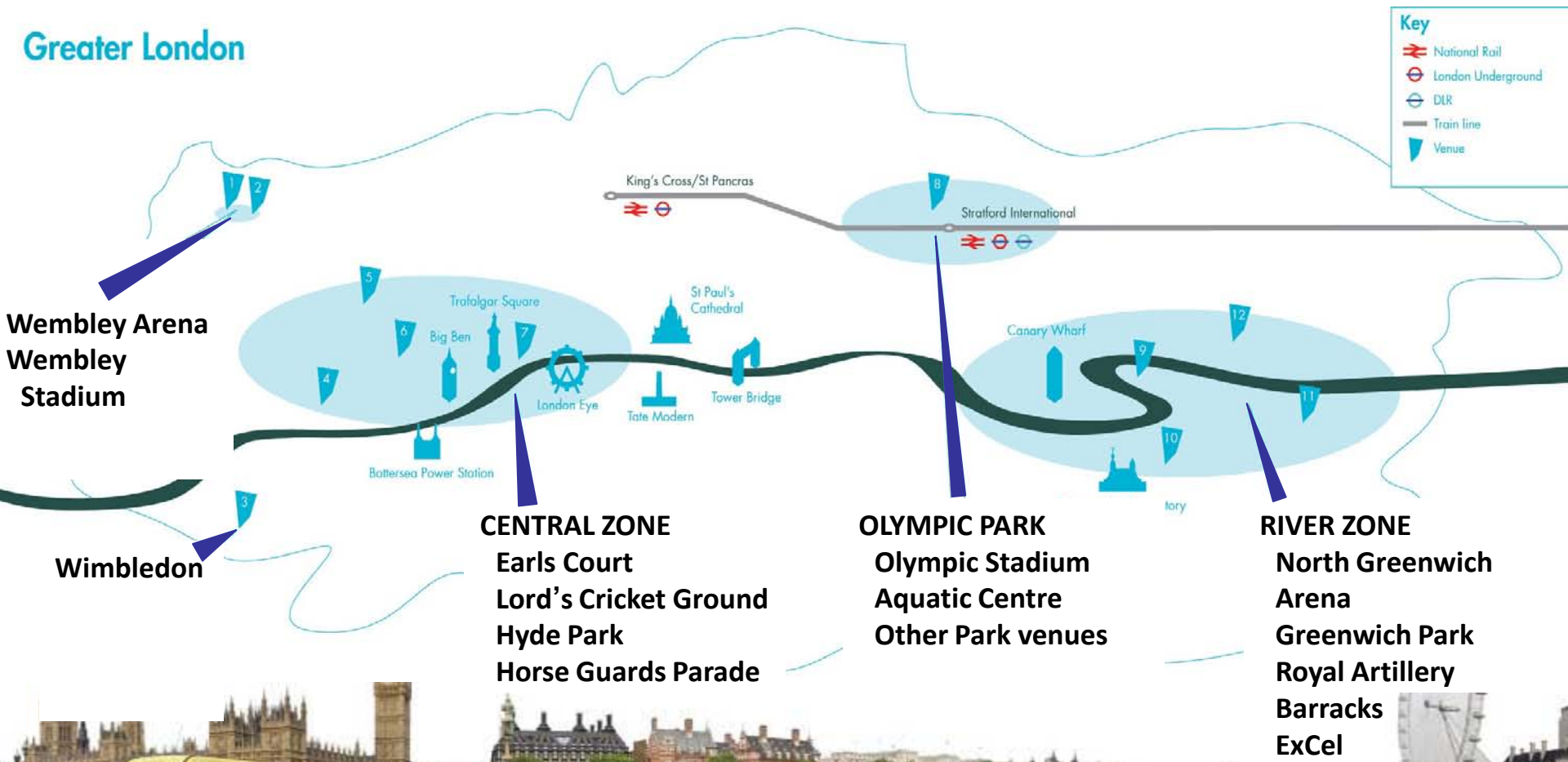
Impact of the Games

Assistant Head of Olympic Planning
Lyn Sugg

20 April 2012



London venues



A typical day in London

Event	Location	Attendance
Greenford Carnival	Greenford	8,000
Dancing City	Canary Wharf	2,000
Pride Festival	Central London	100,000
Pride Parade	Central London	20,000
Take That Concert	Wembley	80,000
The Big Festival	Clapham Common	4,000
Tennis	Wimbledon	40,000
Wireless Festival	Hyde Park	25,000
International Cricket	Lords	6,000
Big Day Out	Streatham	5,000



Influences on central London zone



Events

26 July

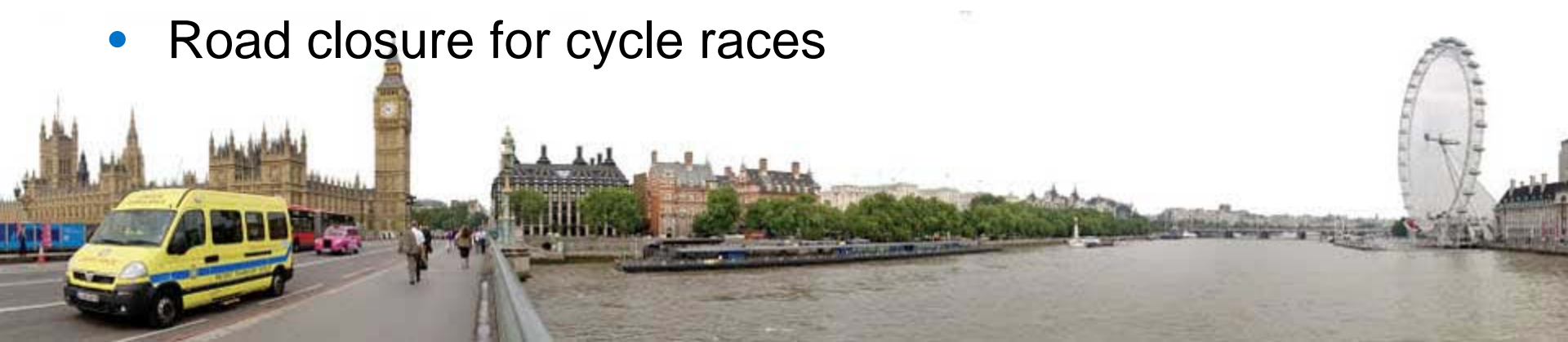
- 80K people in Hyde Park Live site – Torch Concert
- Pride House opens, Clapham Common – up to 45K
- Competition elimination rounds start

27 July

- Opening Ceremony – 80K spectator at Olympic Stadium
- 80K people at Hyde Park Live site
- Large numbers in Central London along river celebrating

28 July

- Road closure for cycle races



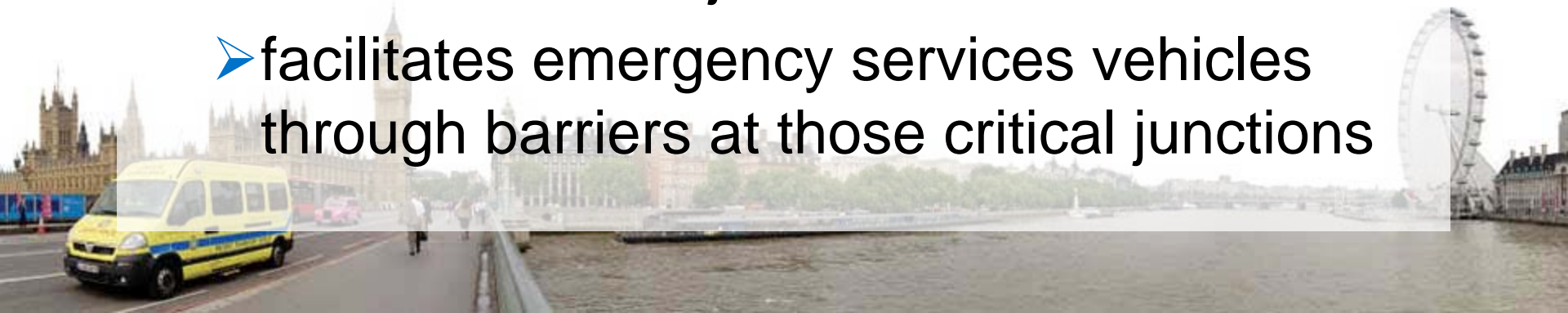
‘Games effect’

- Opening and closing nights as per New Year’s Eve
- 180,000 Olympic Park capacity
- 250,000 journeys per hour transport capacity
- National Olympic Committee houses
- Live sites (screens)
- Concerts, open-air cinema/theatre and athlete presentations each day
- Local Authority celebrations



Olympic Route Network/ Paralympic Route Network

- Worked with TfL to understand the potential impact on the Service
- Multi-agency working to achieve consistent solution
- In the process of finalising an agreement which:
 - details Games lane access
 - identifies critical junctions
 - facilitates emergency services vehicles through barriers at those critical junctions



The safety legacy

- Partnerships
- Venues
- Licensing
- Lessons
- Health



Risks and issues

- Changes to LOCOG specification
- Changes to threat level
- Additional safety and security requirements
- Risk of further industrial action (both pre and during Games time)
- Increase in level of 'Games effect' and impact on business as usual
- Incident outside of London



Risks and issues

- LAS only 15% of London Patient Transport Service (PTS) activity
- LAS blue-light PTS vehicles use Olympic Route Network
- Reduction in PTS activity over summer
- Concerns
 - Misuse of '999'/urgent transfer system out of hours and for capacity management
 - Road closures for security issues and planning consent





London Ambulance Service



NHS Trust

London Ambassadors and Volunteer Responders

Chris Hartley-Sharpe

20 April 2012



LAS

Voluntary Responder Group

Level 1 – based in high footfall areas with public access defibrillators

Level 2 – Community First Responders on call from home for serious medical emergencies

Level 3 – Emergency Responders on duty in blue light response vehicles with a higher level of training



London Ambulance Service



London Ambulance Service NHS
**Ambulance
Community
Responder**

**Ambulance
Community
Responder**

FRO1

SE





Questions?

