



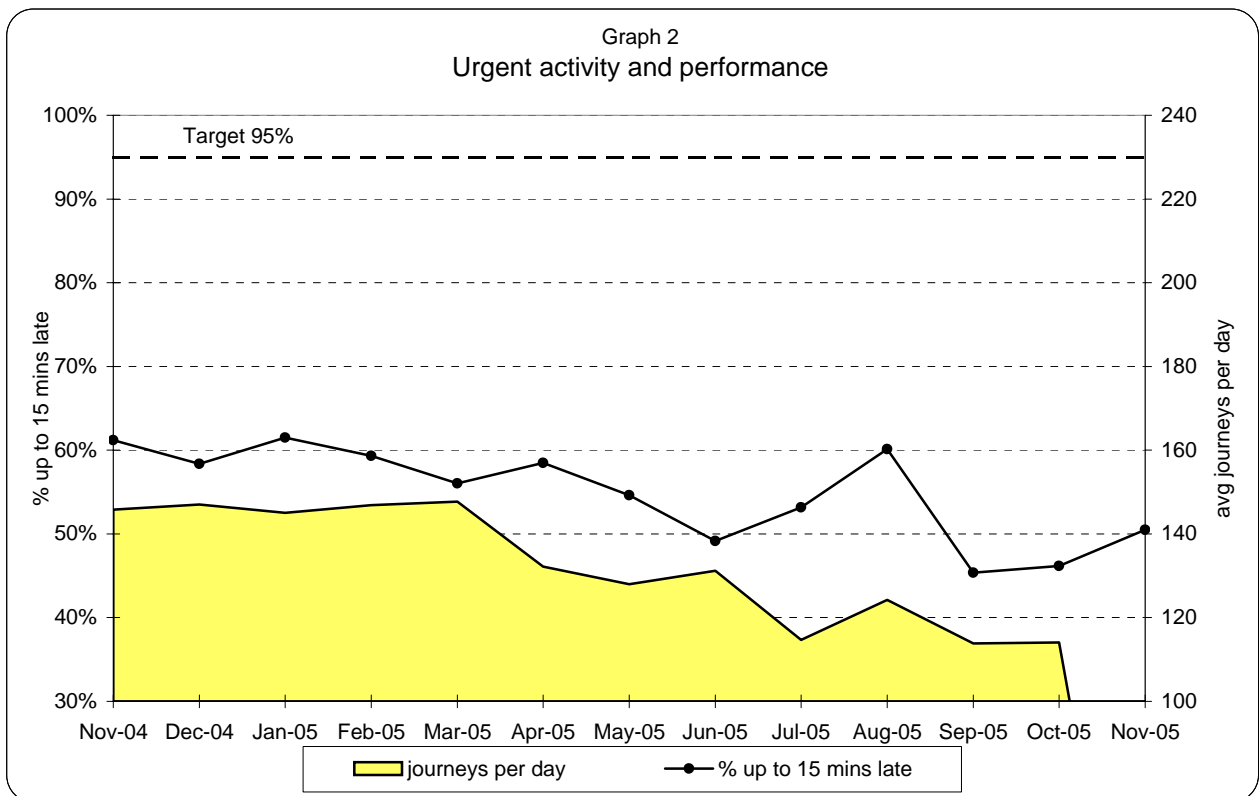
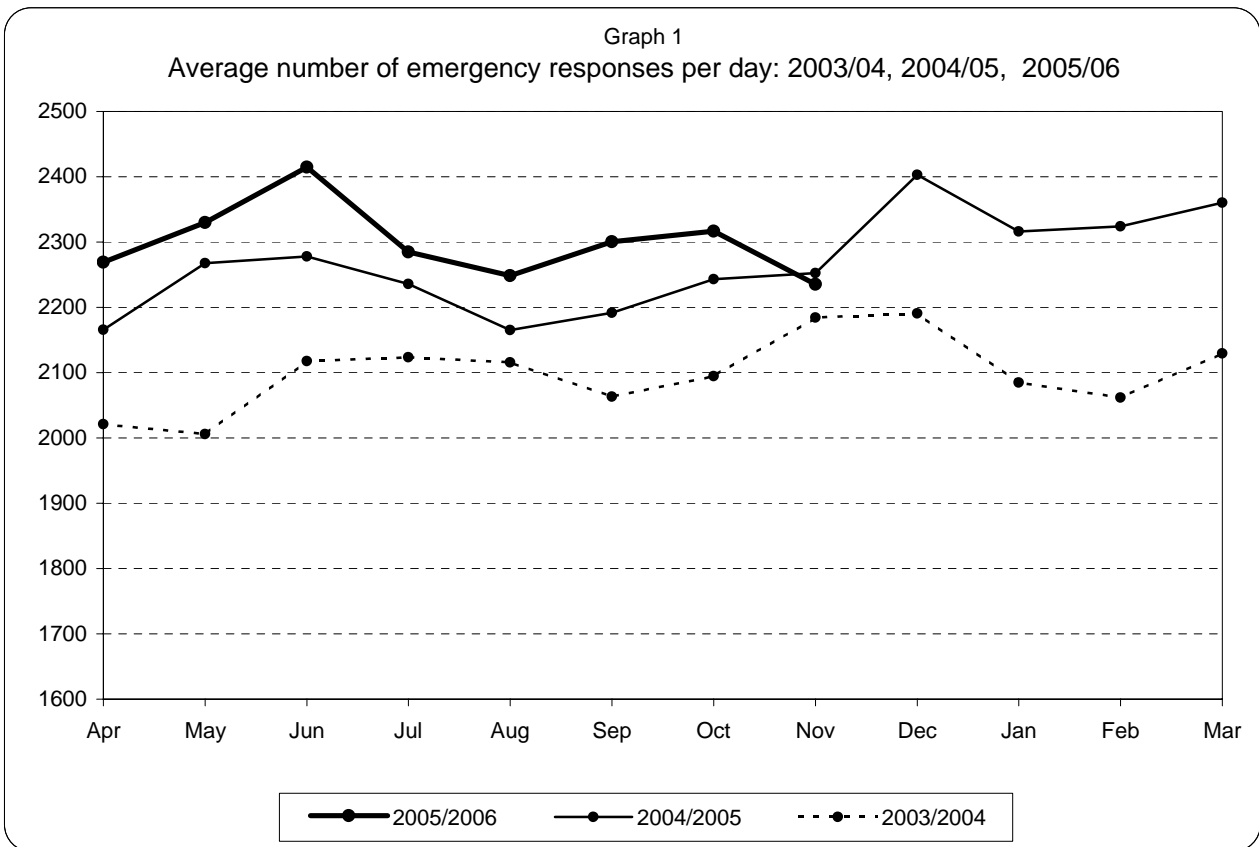
## **Information pack for Trust Board**

# **October/November so far 2005**

**Note: PRF data entry is up to 13th October 2005**  
**AS1/2 data entry is up to 13th November 2005**  
**Manning data entry is up to 13th November 2005**  
**MDT data is up to 15th November 2005**  
**CAC manning is up to 9th November 2005**

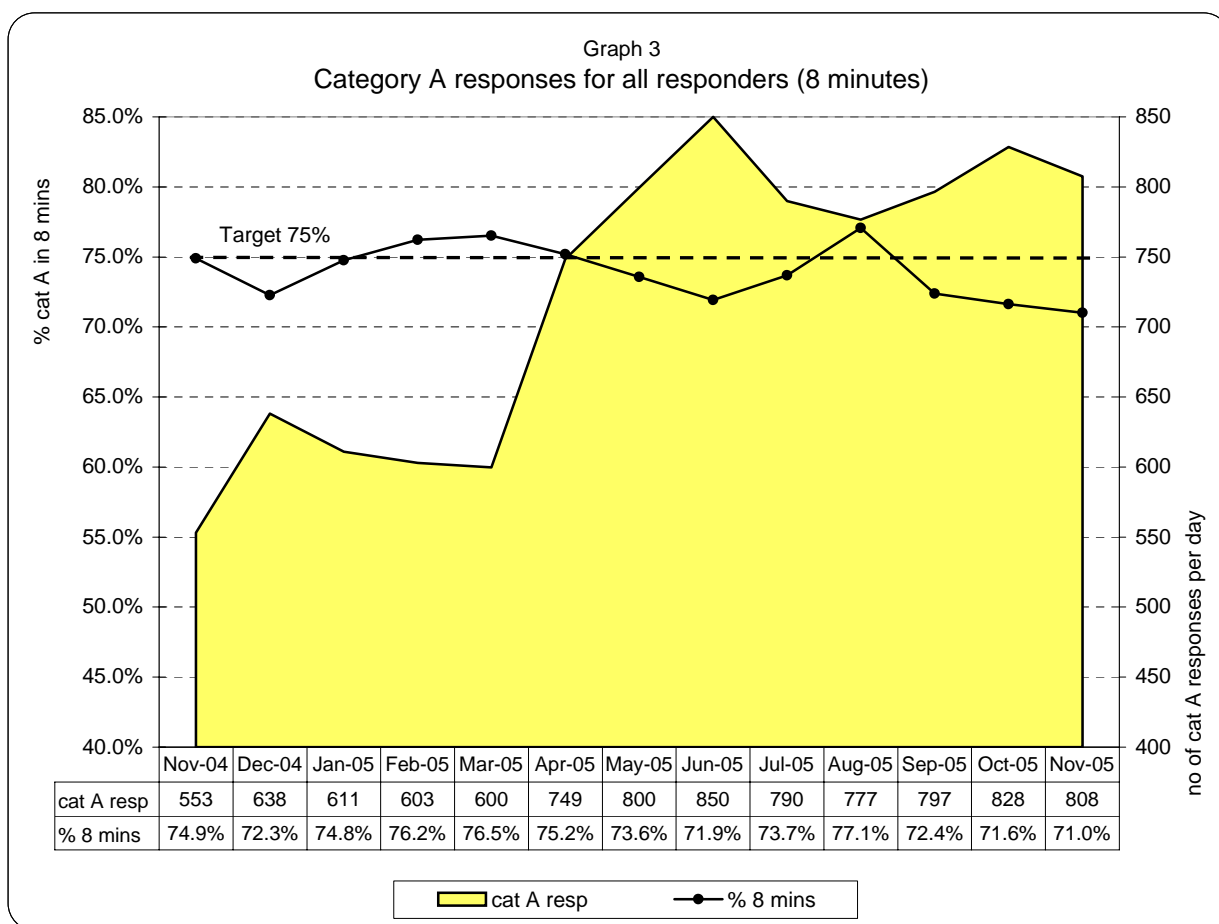
Meg Sparey  
Management Information  
Date: November 17, 2005

**London Ambulance Service NHS Trust  
Accident and Emergency Service  
Emergency activity and Urgent activity and performance**



Note: Urgent performance measures the arrival at hospital time against requested arrival time (target=95% of patients to arrive no more than 15 mins after time requested)

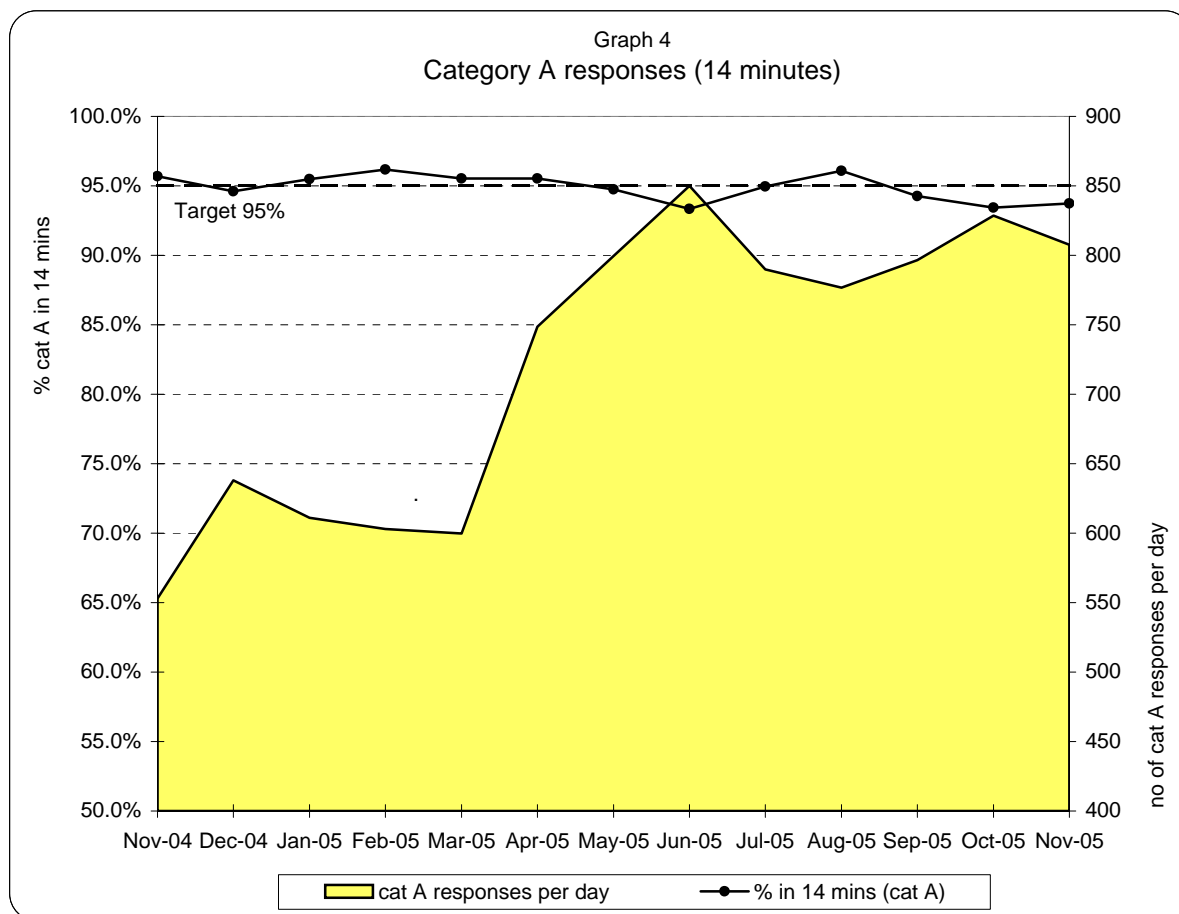
**London Ambulance Service NHS Trust  
Accident and Emergency Service  
Emergency responses: 8 minute response activity and performance**



**Table 1  
8 minute response by Strategic Health Authority (cat A, for all responders)**

	North West London Strategic HA	North Central London Strategic HA	North East London Strategic HA	South East London Strategic HA	South West London Strategic HA	Total LAS
Apr-05	73%	75%	72%	75%	73%	<b>75%</b>
May-05	73%	75%	72%	75%	73%	<b>74%</b>
Jun-05	70%	74%	70%	74%	73%	<b>72%</b>
Jul-05	73%	76%	73%	75%	72%	<b>74%</b>
Aug-05	76%	80%	77%	79%	74%	<b>77%</b>
Sep-05	72%	74%	70%	74%	72%	<b>72%</b>
Oct-05	71%	73%	68%	75%	73%	<b>72%</b>
Nov-05	73%	72%	70%	71%	70%	<b>71%</b>
Dec-05						
Jan-06						
Feb-06						
Mar-06						
YTD	<b>73%</b>	<b>75%</b>	<b>72%</b>	<b>75%</b>	<b>73%</b>	<b>73%</b>

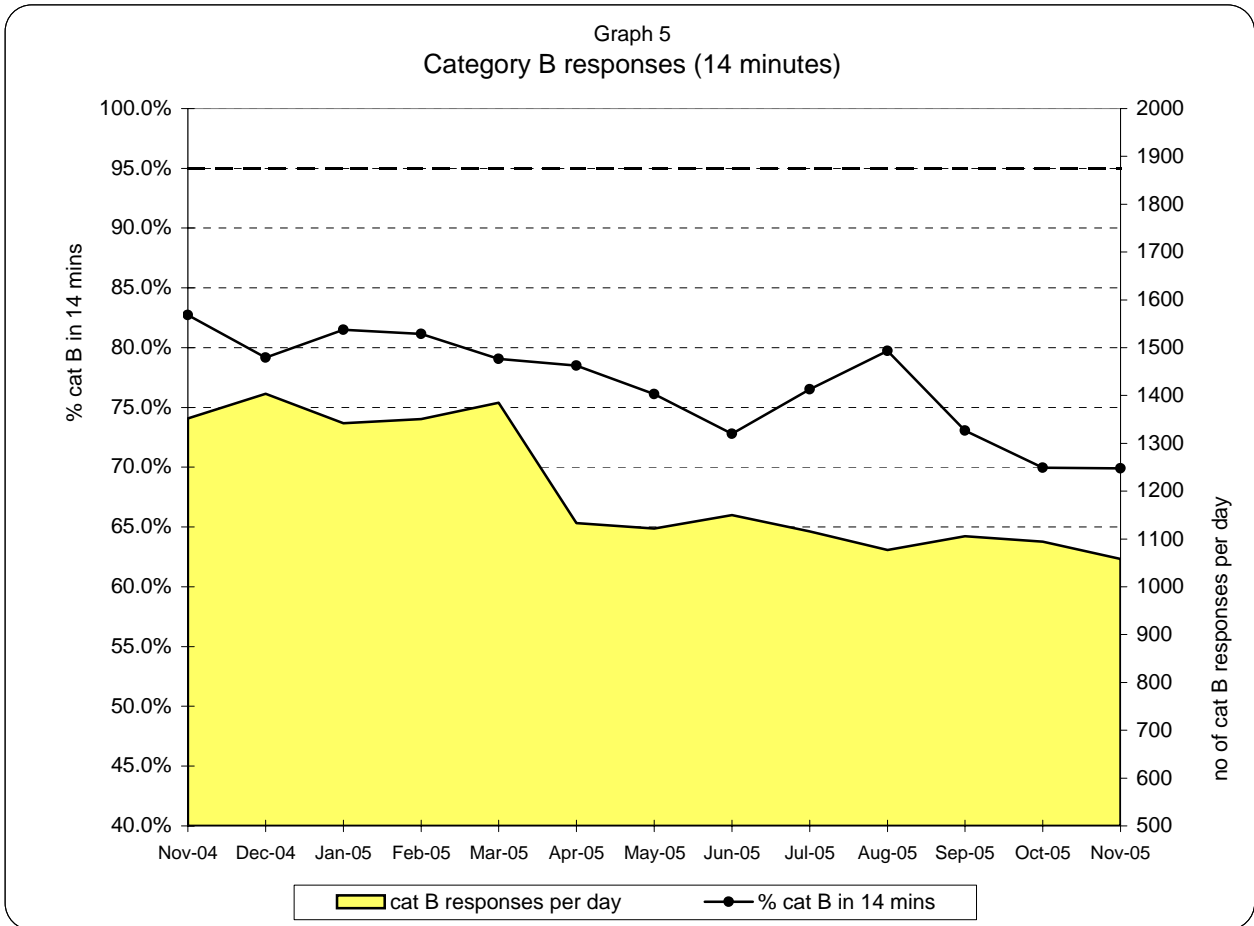
**London Ambulance Service NHS Trust  
Accident and Emergency Service  
Emergency responses: 14 minute response activity and performance (cat A)**



**Table 2  
14 minute response by Strategic Health Authority (category A)**

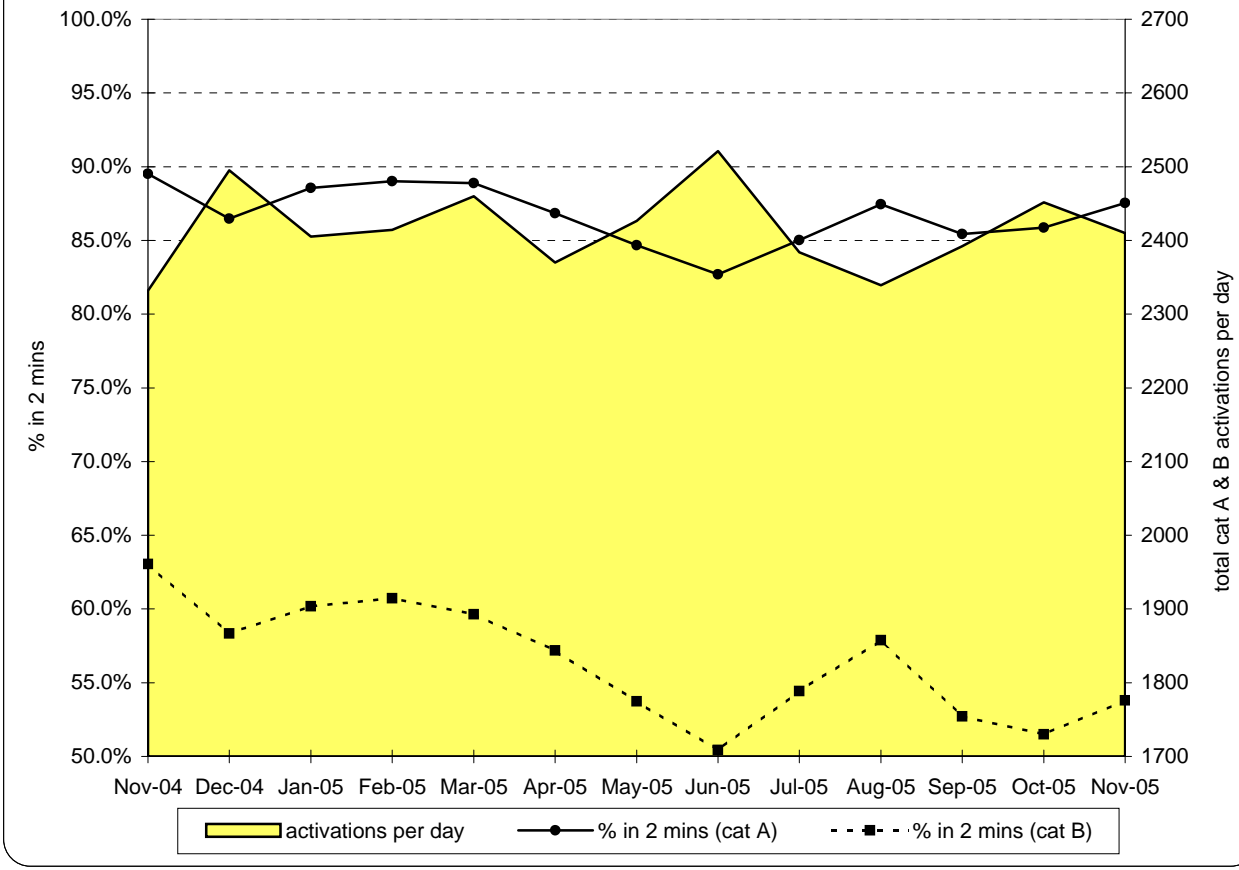
	North West London Strategic HA	North Central London Strategic HA	North East London Strategic HA	South East London Strategic HA	South West London Strategic HA	Total LAS
Apr-05	95%	95%	93%	96%	96%	<b>96%</b>
May-05	95%	95%	93%	96%	96%	<b>95%</b>
Jun-05	93%	94%	92%	95%	94%	<b>93%</b>
Jul-05	95%	96%	94%	96%	95%	<b>95%</b>
Aug-05	96%	97%	96%	96%	96%	<b>96%</b>
Sep-05	95%	95%	94%	94%	94%	<b>94%</b>
Oct-05	94%	94%	91%	95%	94%	<b>93%</b>
Nov-05	95%	94%	92%	94%	94%	<b>94%</b>
Dec-05						
Jan-06						
Feb-06						
Mar-06						
<b>YTD</b>	<b>95%</b>	<b>95%</b>	<b>93%</b>	<b>95%</b>	<b>95%</b>	<b>95%</b>

**London Ambulance Service NHS Trust  
Accident and Emergency Service  
Emergency responses: 14 minute response activity and performance (cat B)**

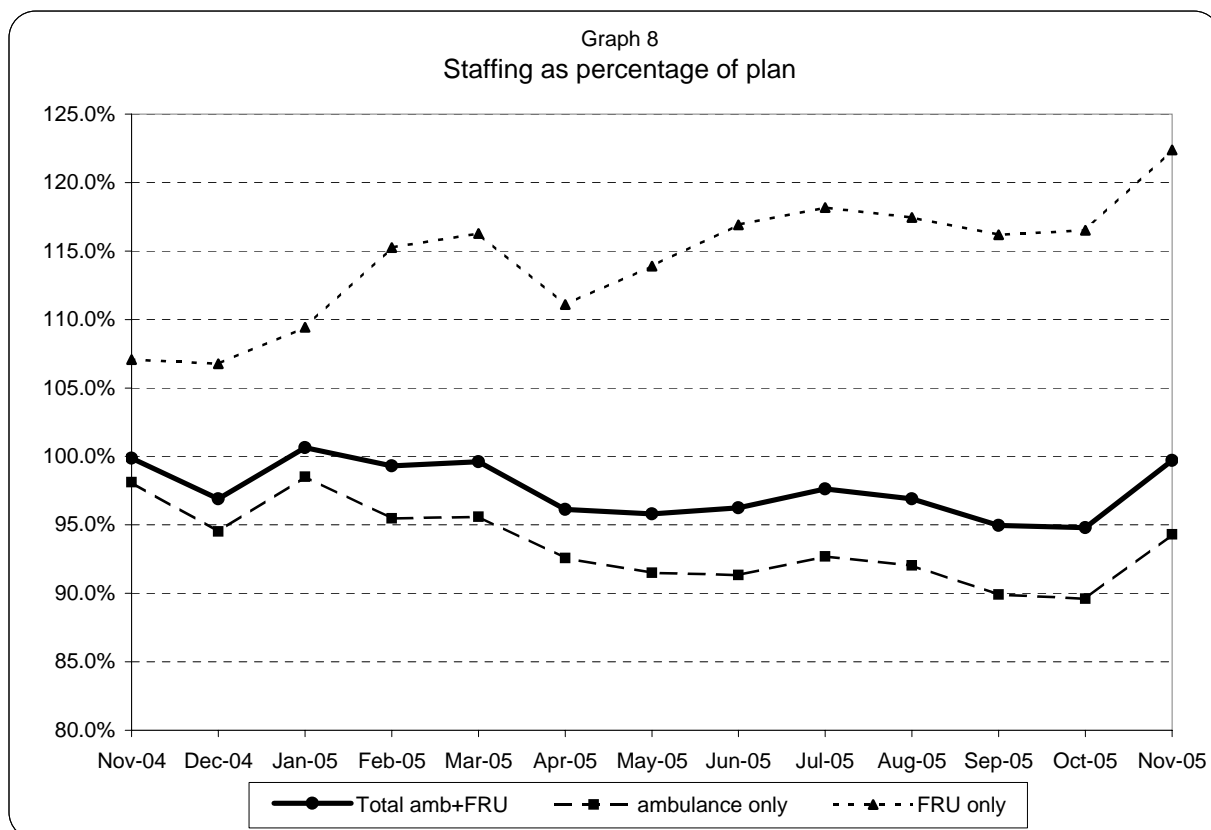
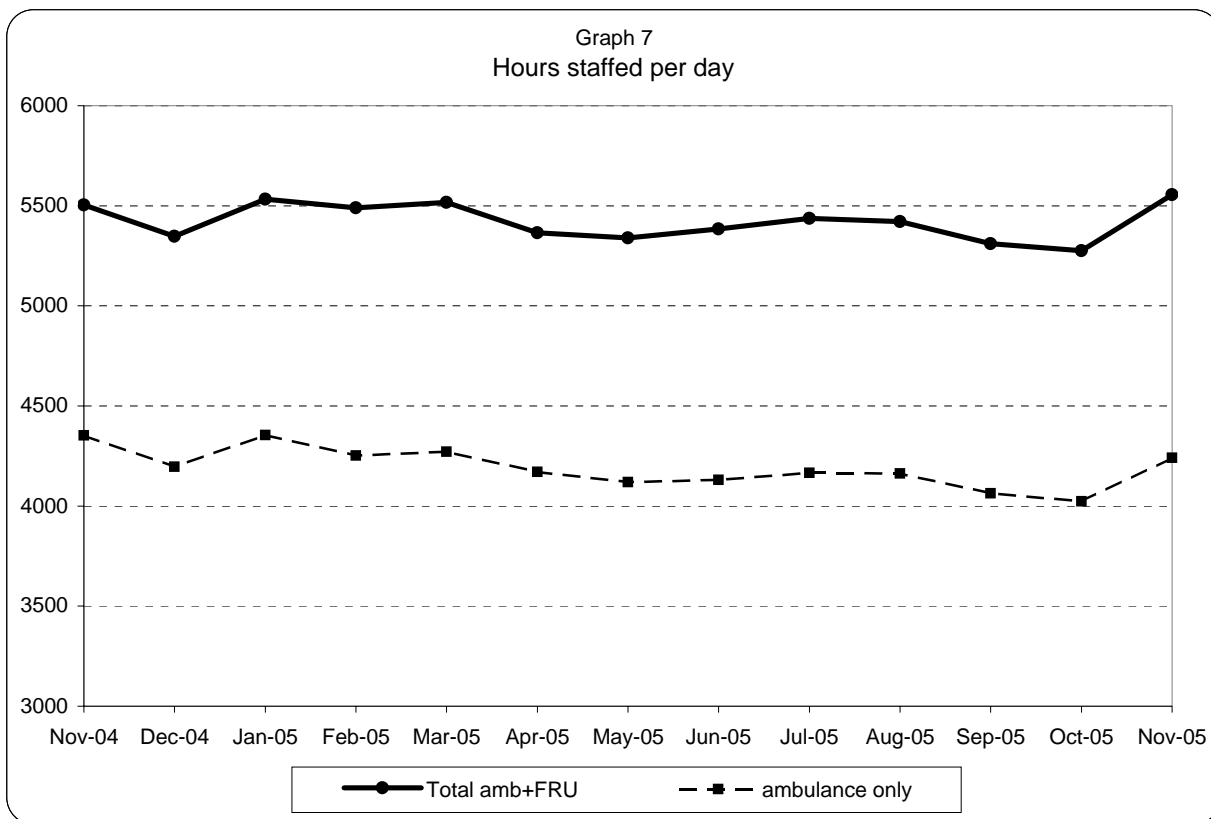


**London Ambulance Service NHS Trust  
Accident and Emergency Service  
Emergency activations: activity and performance**

Graph 6  
Category A and B activations



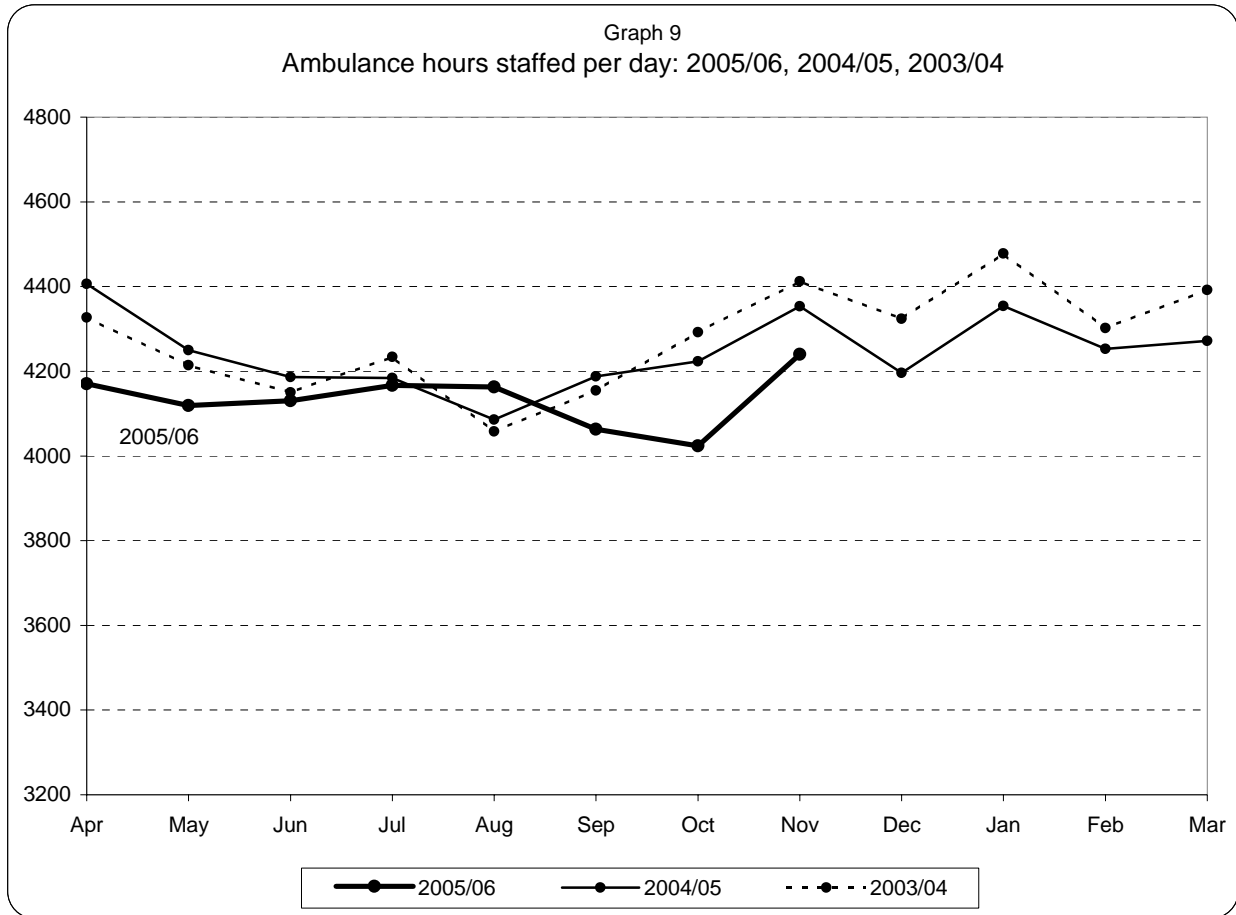
**London Ambulance Service NHS Trust  
Accident and Emergency Service  
Ambulance and FRU staffing**



Note:

1) staffed = plan + additional - unmanned - single

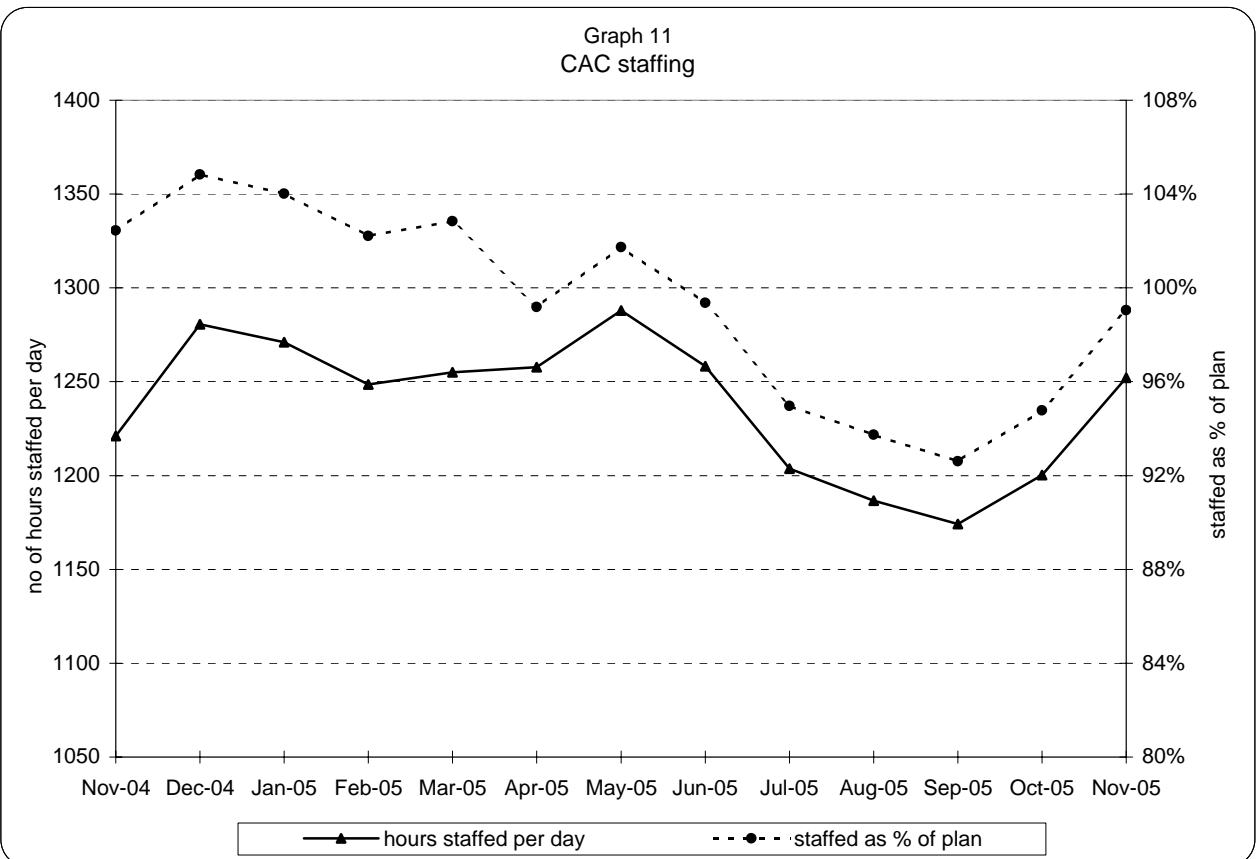
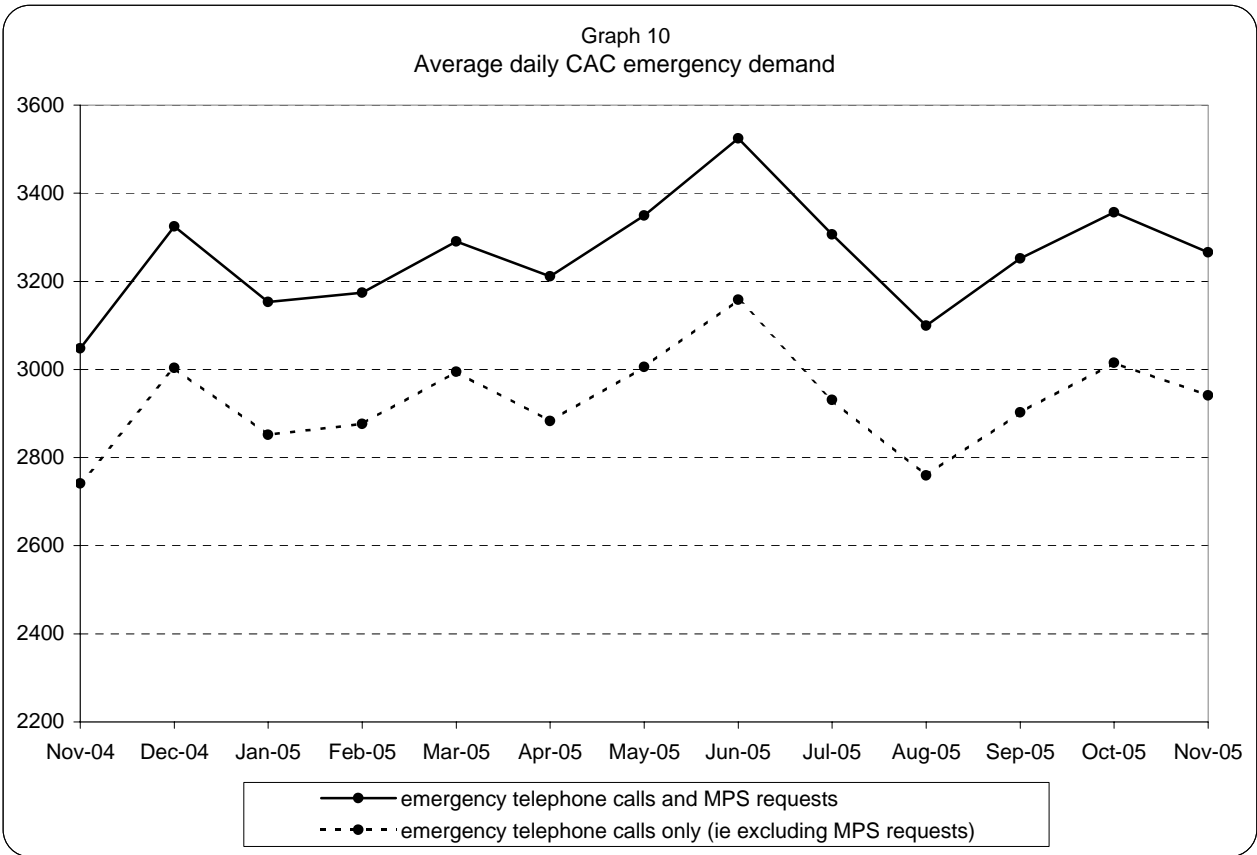
**London Ambulance Service NHS Trust  
Accident and Emergency Service  
Yearly comparison of ambulance staffing**



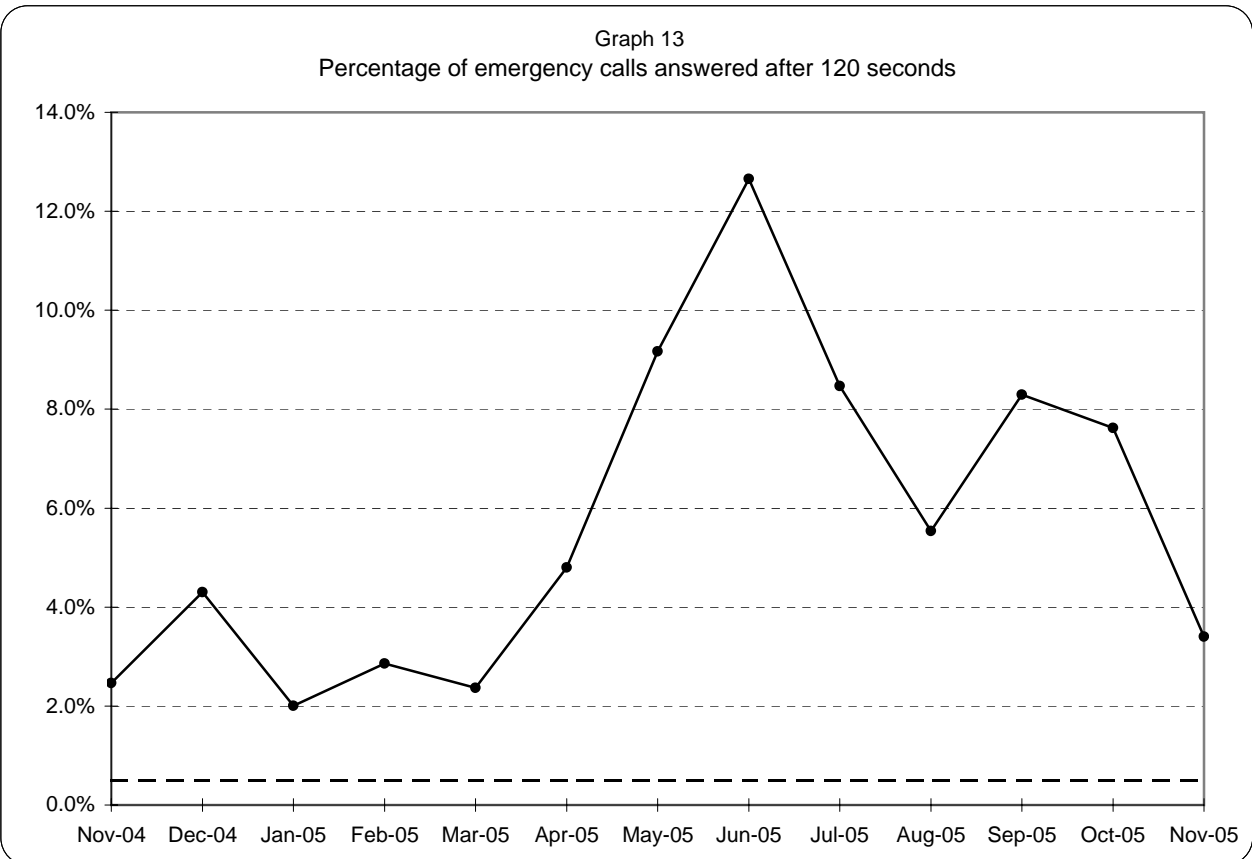
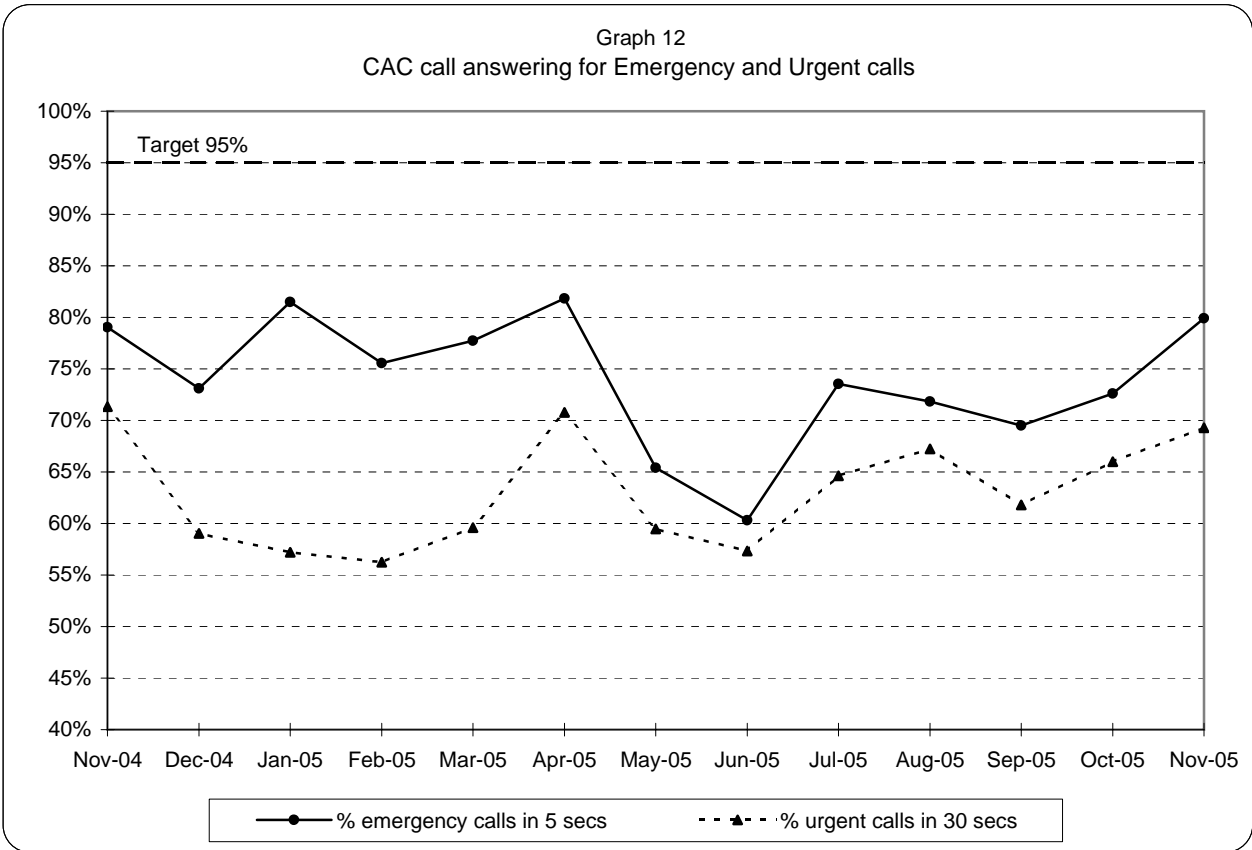
Note:staffed = plan + additional - unmanned - single



**London Ambulance Service NHS Trust  
Accident and Emergency Service  
CAC activity and staffing**



**London Ambulance Service NHS Trust  
Accident and Emergency Service  
CAC call answering performance**



Note: 95% target applies to both Emergency and Urgent call answering

**London Ambulance Service NHS Trust**  
**Accident and Emergency Service**  
**Category A activity and performance by Primary Care Trust**

Table 3

		July 2005		August 2005		September 2005		October 2005		1-15th November 2005		Year to date	
		Cat A resp	% cat A resp in 8 mins	Cat A resp	% cat A resp in 8 mins	Cat A resp	% cat A resp in 8 mins	Cat A resp	% cat A resp in 8 mins	Cat A resp	% cat A resp in 8 mins	Cat A resp	% cat A resp in 8 mins
5K5	Brent PCT	911	64%	977	72%	906	67%	948	64%	451	73%	6,993	67%
5HX	Ealing PCT	992	70%	974	71%	996	65%	1,065	66%	450	68%	7,424	68%
5H1	Hammersmith & Fulham PCT	568	79%	542	81%	573	82%	586	78%	274	78%	4,294	79%
5K6	Harrow PCT	578	76%	596	81%	552	75%	617	75%	292	77%	4,418	77%
5AT	Hillingdon PCT	886	72%	851	73%	822	69%	890	71%	435	71%	6,497	71%
5HY	Hounslow PCT	756	76%	720	75%	704	74%	691	71%	318	72%	5,289	74%
5LA	Kensington & Chelsea PCT	491	74%	475	77%	392	73%	476	75%	218	74%	3,329	75%
5LC	Westminster PCT	1,213	77%	1,090	80%	1,108	77%	1,094	74%	558	73%	8,375	77%
<b>North West London Strategic HA</b>		<b>6,395</b>	<b>73%</b>	<b>6,225</b>	<b>76%</b>	<b>6,053</b>	<b>72%</b>	<b>6,367</b>	<b>71%</b>	<b>2,996</b>	<b>73%</b>	<b>46,619</b>	<b>73%</b>
5A9	Barnet PCT	836	66%	813	72%	936	68%	909	64%	456	61%	6,530	66%
5K7	Camden PCT	898	82%	807	88%	846	80%	869	81%	409	82%	6,368	84%
5C1	Enfield PCT	842	77%	859	78%	863	72%	950	72%	448	69%	6,548	74%
5C9	Haringey PCT	842	72%	849	79%	812	73%	943	73%	399	73%	6,365	74%
5K8	Islington PCT	713	81%	730	84%	749	80%	775	76%	319	80%	5,554	81%
<b>North Central London Strategic HA</b>		<b>4,131</b>	<b>76%</b>	<b>4,058</b>	<b>80%</b>	<b>4,206</b>	<b>74%</b>	<b>4,446</b>	<b>73%</b>	<b>2,031</b>	<b>72%</b>	<b>31,365</b>	<b>75%</b>
5C2	Barking & Dagenham PCT	631	73%	609	77%	586	69%	693	65%	331	72%	4,765	71%
5C3	City & Hackney PCT	907	69%	878	75%	953	70%	923	67%	425	72%	6,894	70%
5A4	Havering PCT	607	70%	572	71%	626	68%	642	70%	305	69%	4,530	70%
5C5	Newham PCT	1,004	73%	958	77%	928	71%	1,108	67%	505	69%	7,430	71%
5NA	Redbridge PCT	712	79%	642	79%	670	69%	756	72%	358	69%	5,242	74%
5C4	September 2005	804	74%	880	79%	839	72%	820	62%	413	64%	6,203	70%
5NC	Waltham Forest PCT	706	76%	658	78%	683	72%	764	73%	371	74%	5,355	75%
<b>North East London Strategic HA</b>		<b>5,371</b>	<b>73%</b>	<b>5,197</b>	<b>77%</b>	<b>5,285</b>	<b>70%</b>	<b>5,706</b>	<b>68%</b>	<b>2,708</b>	<b>70%</b>	<b>40,419</b>	<b>72%</b>
5AX	Bexley PCT	594	78%	530	82%	555	75%	587	76%	271	73%	4,226	78%
5A7	Bromley PCT	726	75%	721	75%	727	73%	807	71%	383	72%	5,675	74%
5A8	Greenwich PCT	796	73%	831	74%	806	72%	861	80%	399	70%	6,120	73%
5LD	Lambeth PCT	1,073	72%	1,088	79%	1,079	72%	1,091	72%	521	64%	8,014	73%
5LF	Lewisham PCT	817	75%	864	81%	829	75%	863	72%	386	70%	6,255	75%
5LE	Southwark PCT	1,085	78%	1,092	82%	1,018	75%	1,103	76%	564	77%	7,932	78%
<b>South East London Strategic HA</b>		<b>5,091</b>	<b>75%</b>	<b>5,126</b>	<b>79%</b>	<b>5,014</b>	<b>74%</b>	<b>5,312</b>	<b>75%</b>	<b>2,524</b>	<b>71%</b>	<b>38,222</b>	<b>75%</b>
5K9	Croydon PCT	1,076	67%	985	71%	1,018	66%	1,049	65%	536	67%	7,621	68%
5A5	Kingston PCT	359	74%	408	75%	343	71%	445	75%	195	77%	2,857	75%
5M6	Richmond & Twickenham PCT	400	66%	401	66%	368	69%	435	70%	212	70%	2,994	68%
5M7	Sutton & Merton PCT	883	79%	884	79%	853	82%	994	79%	474	73%	6,758	79%
5LG	Wandsworth PCT	744	75%	740	78%	712	73%	894	78%	425	68%	5,818	75%
<b>South West London Strategic HA</b>		<b>3,462</b>	<b>72%</b>	<b>3,418</b>	<b>74%</b>	<b>3,294</b>	<b>72%</b>	<b>3,817</b>	<b>73%</b>	<b>1,842</b>	<b>70%</b>	<b>26,048</b>	<b>73%</b>
	Lowest (excl out of London)		64%		66%		65%		62%		61%		66%
	Highest (excl out of London)		82%		88%		82%		81%		82%		84%
	Range		18%		23%		17%		27%		21%		18%