



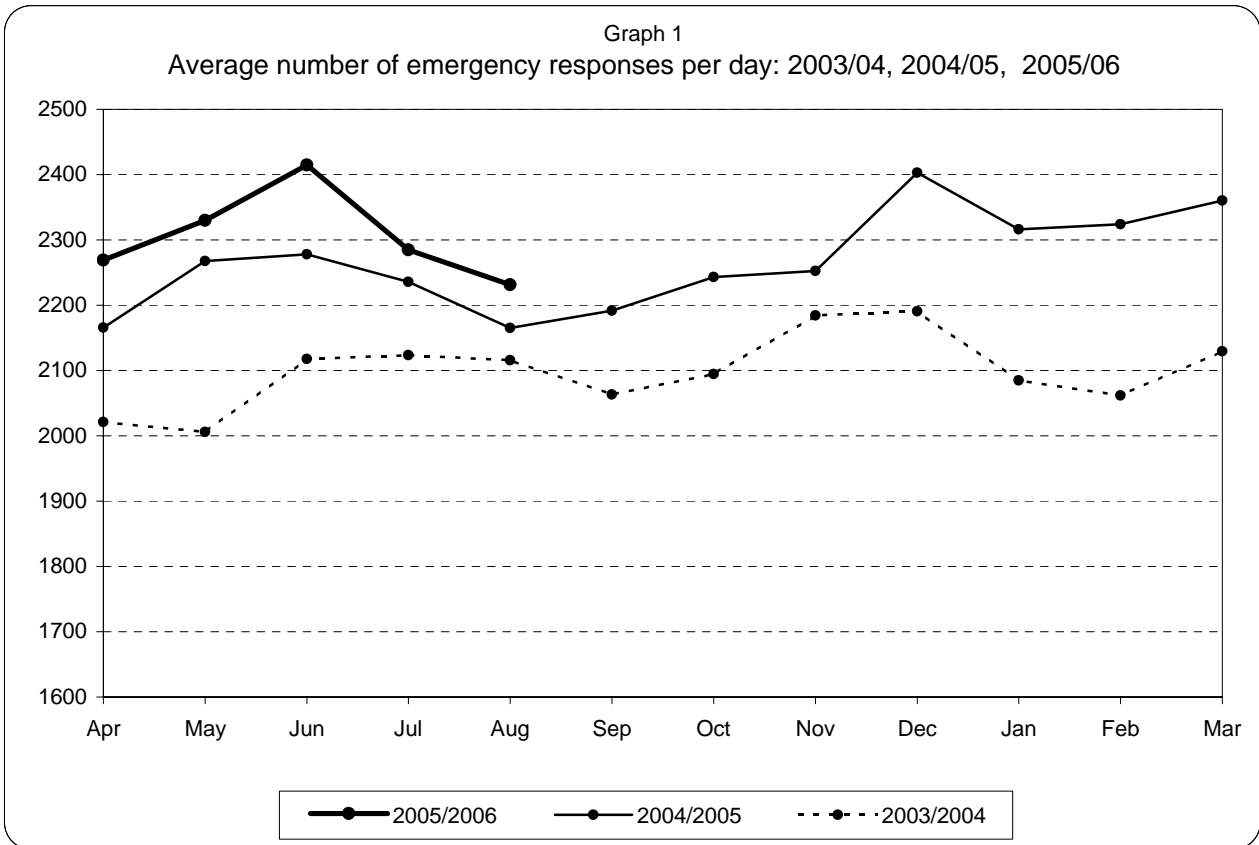
# **Information pack for Trust Board**

## **August 2005**

Note: PRF data entry is only up to 27th August 2005

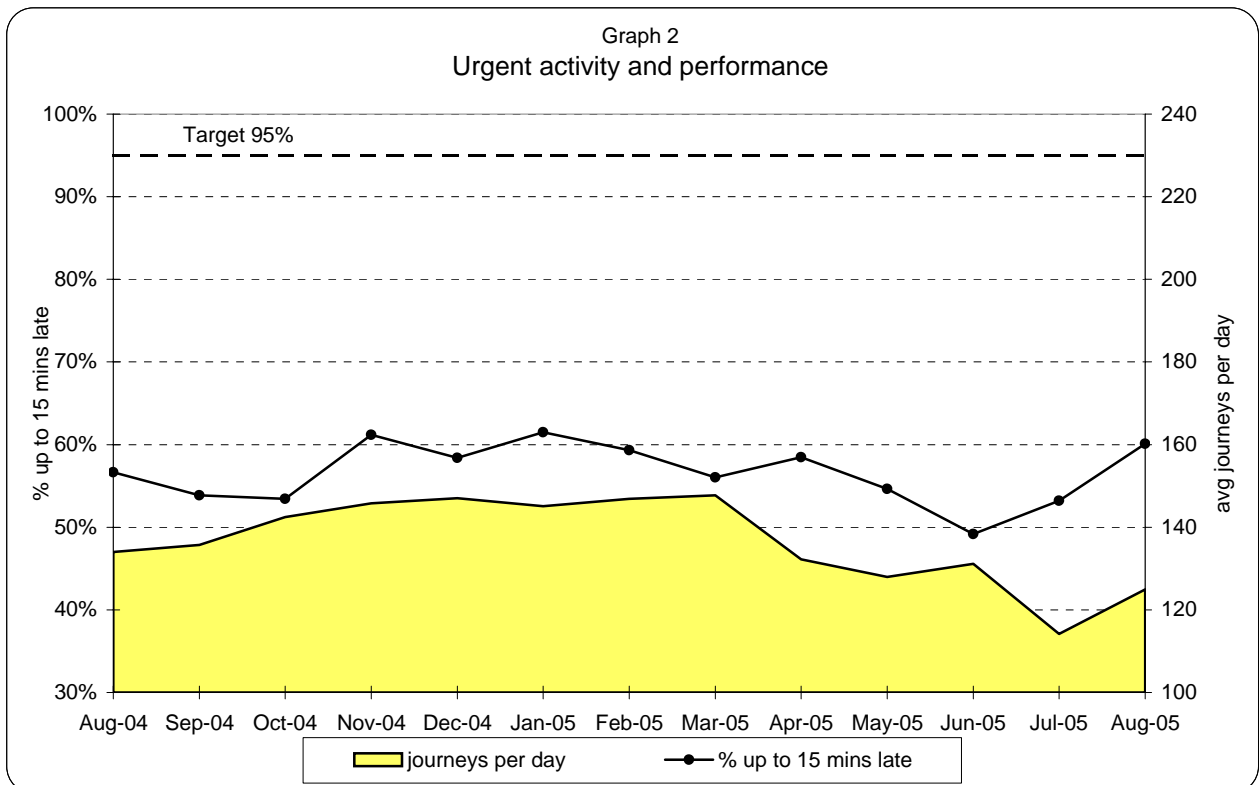
Meg Sparey  
Management Information  
Date: September 20, 2005

**London Ambulance Service NHS Trust  
Accident and Emergency Service  
Emergency activity and Urgent activity and performance**



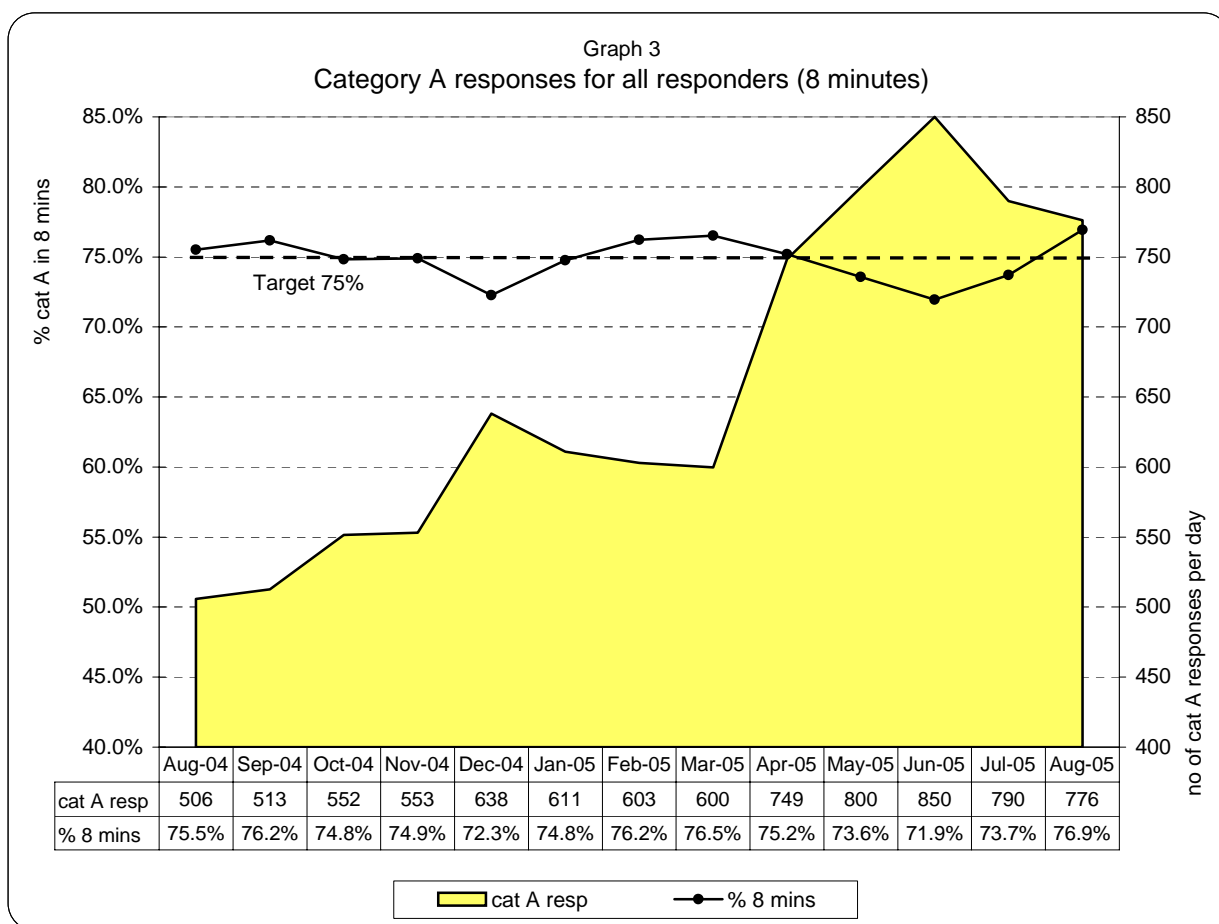
**Emergency responses: monthly and year to date comparison**

Aug 05 v Aug 04	Apr 05-Aug 05 v Apr 04-Aug 04
+3.1%	+3.7%



Note: Urgent performance measures the arrival at hospital time against requested arrival time (target=95% of patients to arrive no more than 15 mins after time requested)

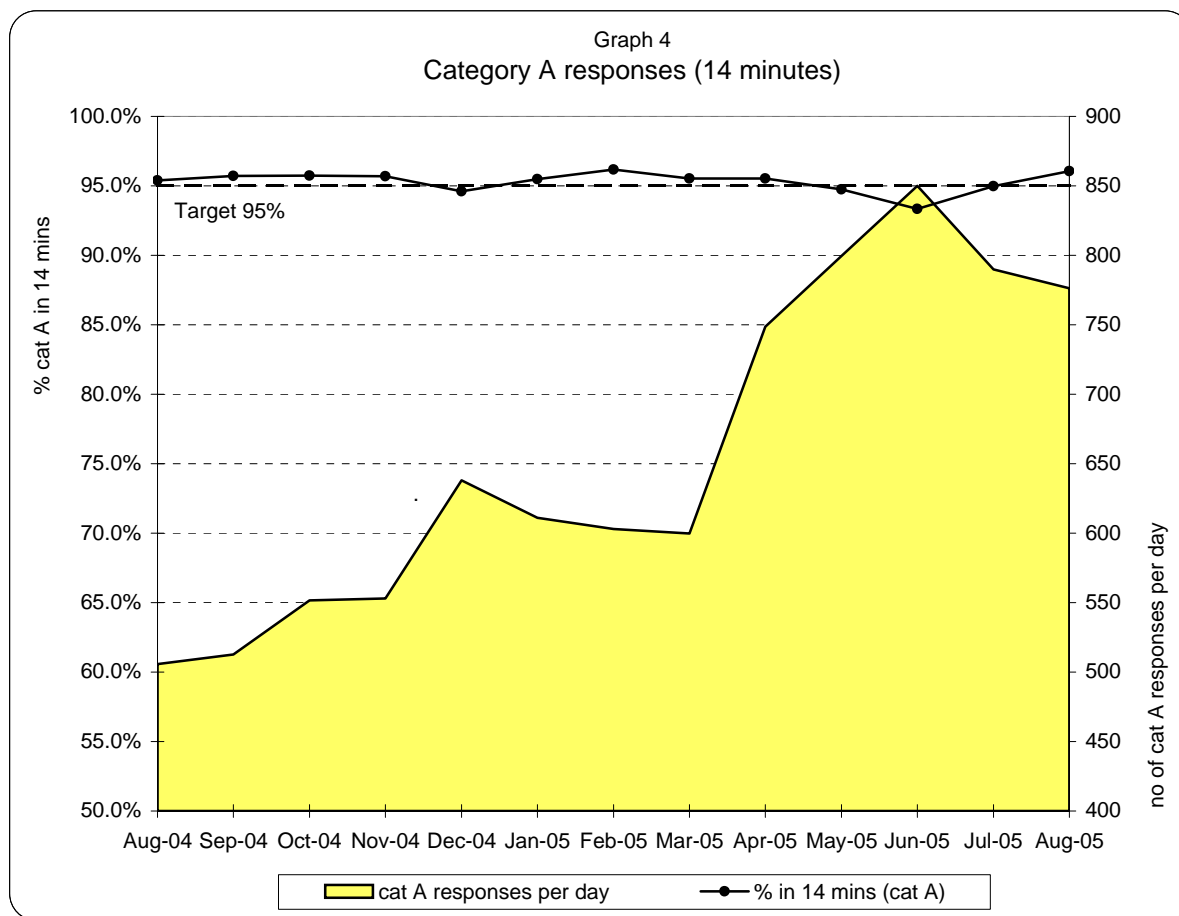
**London Ambulance Service NHS Trust  
Accident and Emergency Service  
Emergency responses: 8 minute response activity and performance**



**Table 1  
8 minute response by Strategic Health Authority (cat A, for all responders)**

	North West London	North Central London	North East London	South East London	South West London	Total LAS
<b>Apr-05</b>	76%	78%	72%	76%	74%	<b>75%</b>
<b>May-05</b>	73%	75%	72%	75%	73%	<b>74%</b>
<b>Jun-05</b>	70%	74%	70%	74%	73%	<b>72%</b>
<b>Jul-05</b>	73%	76%	73%	75%	72%	<b>74%</b>
<b>Aug-05</b>	75%	80%	77%	79%	74%	<b>77%</b>
<b>Sep-05</b>						
<b>Oct-05</b>						
<b>Nov-05</b>						
<b>Dec-05</b>						
<b>Jan-06</b>						
<b>Feb-06</b>						
<b>Mar-06</b>						
<b>YTD</b>	<b>74%</b>	<b>76%</b>	<b>73%</b>	<b>76%</b>	<b>73%</b>	<b>74%</b>

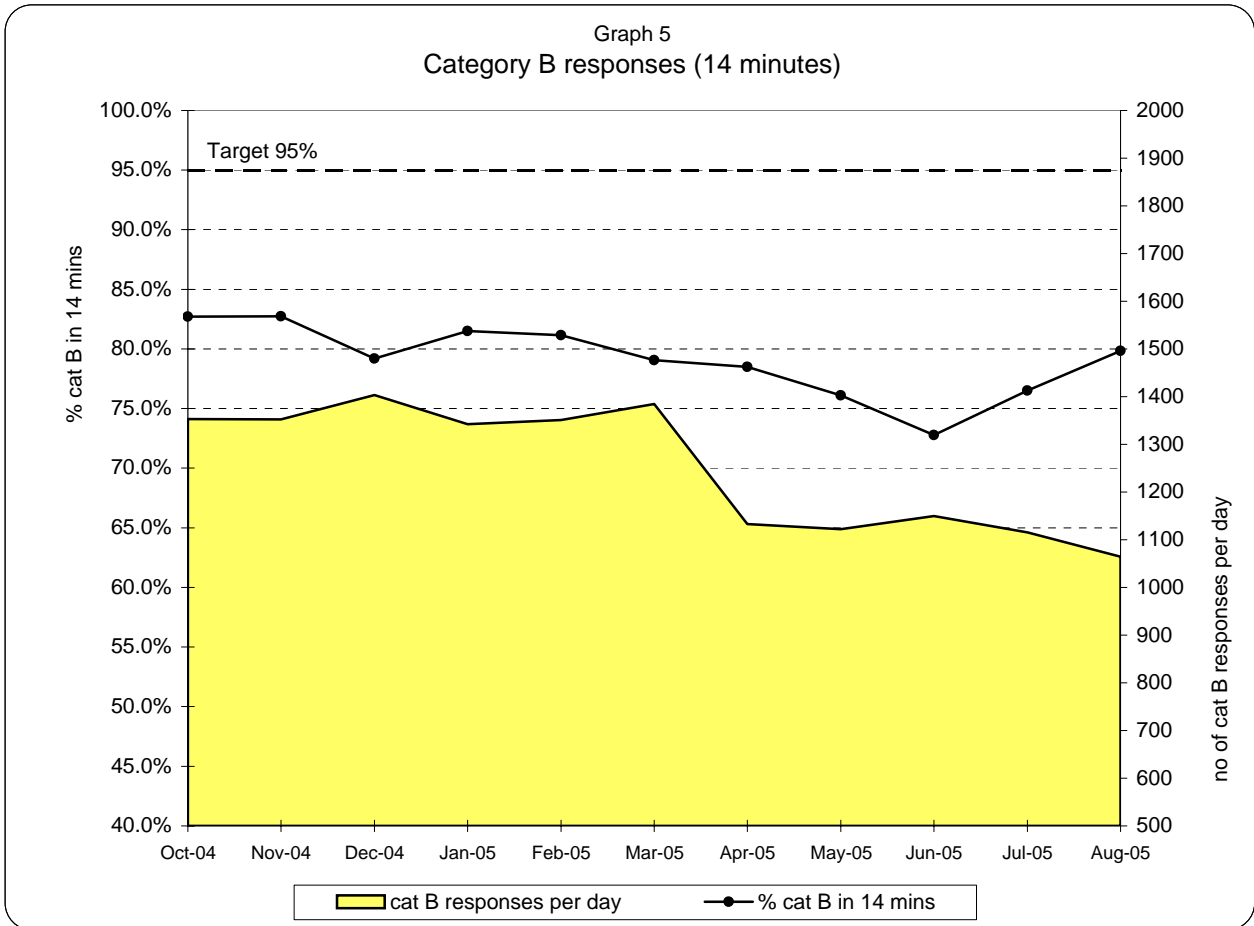
**London Ambulance Service NHS Trust  
Accident and Emergency Service  
Emergency responses: 14 minute response activity and performance (cat A)**



**Table 2  
14 minute response by Strategic Health Authority (category A)**

	North West London	North Central London	North East London	South East London	South West London	Total LAS
Apr-05	96%	96%	93%	97%	95%	<b>96%</b>
May-05	95%	95%	93%	96%	96%	<b>95%</b>
Jun-05	93%	94%	92%	95%	94%	<b>93%</b>
Jul-05	95%	96%	94%	96%	95%	<b>95%</b>
Aug-05	96%	97%	96%	96%	96%	<b>96%</b>
Sep-05						
Oct-05						
Nov-05						
Dec-05						
Jan-06						
Feb-06						
Mar-06						
YTD	<b>95%</b>	<b>95%</b>	<b>93%</b>	<b>96%</b>	<b>95%</b>	<b>95%</b>

**London Ambulance Service NHS Trust  
Accident and Emergency Service  
Emergency responses: 14 minute response activity and performance (cat B)**

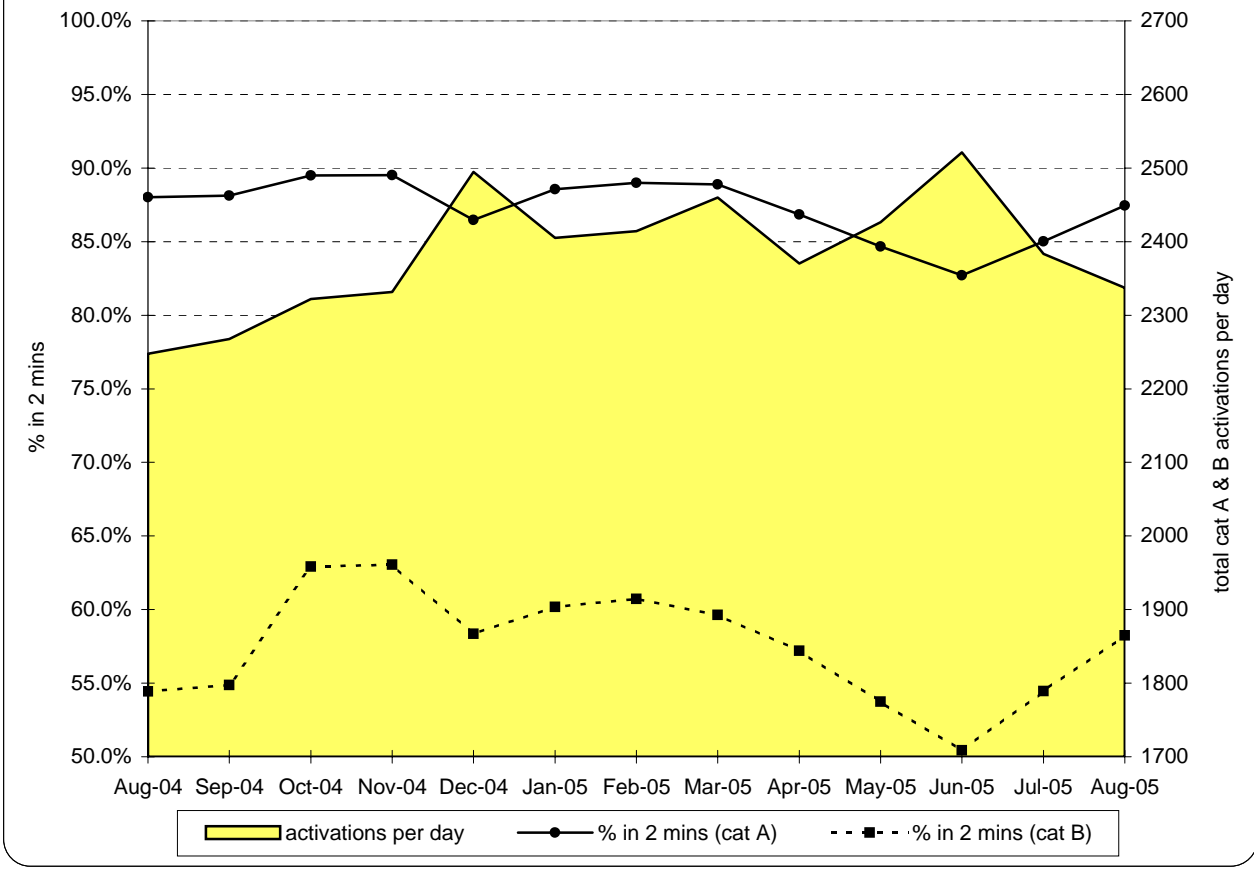


Notes:

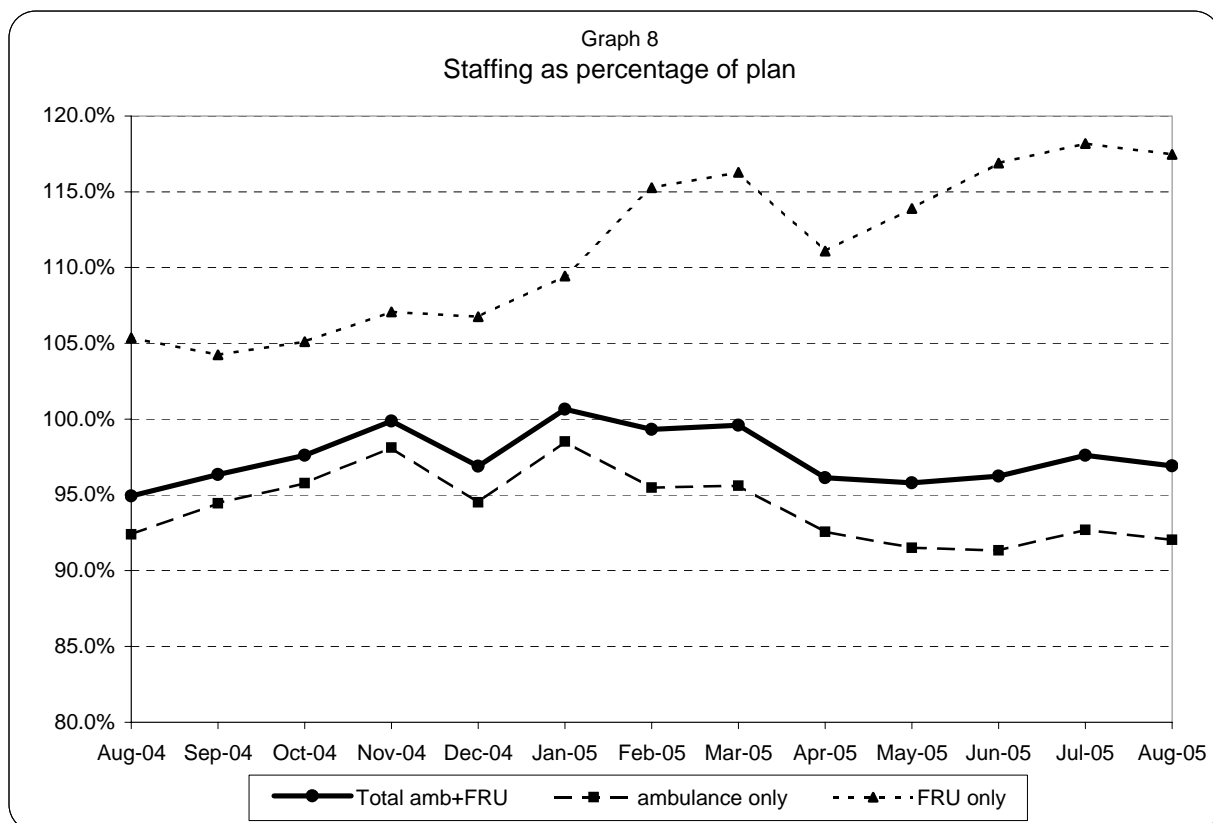
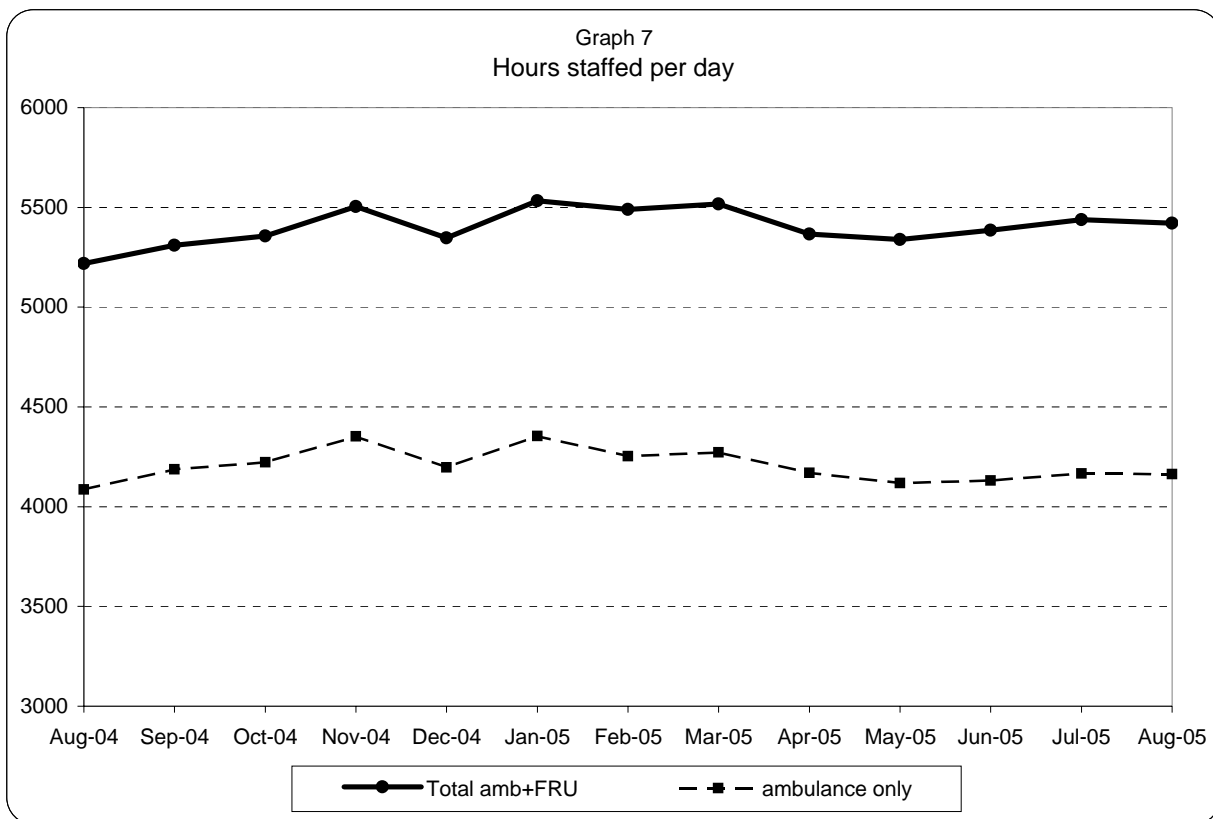
Prior to October 2004, cat B included what are now classified as cat C

**London Ambulance Service NHS Trust  
Accident and Emergency Service  
Emergency activations: activity and performance**

Graph 6  
Category A and B activations



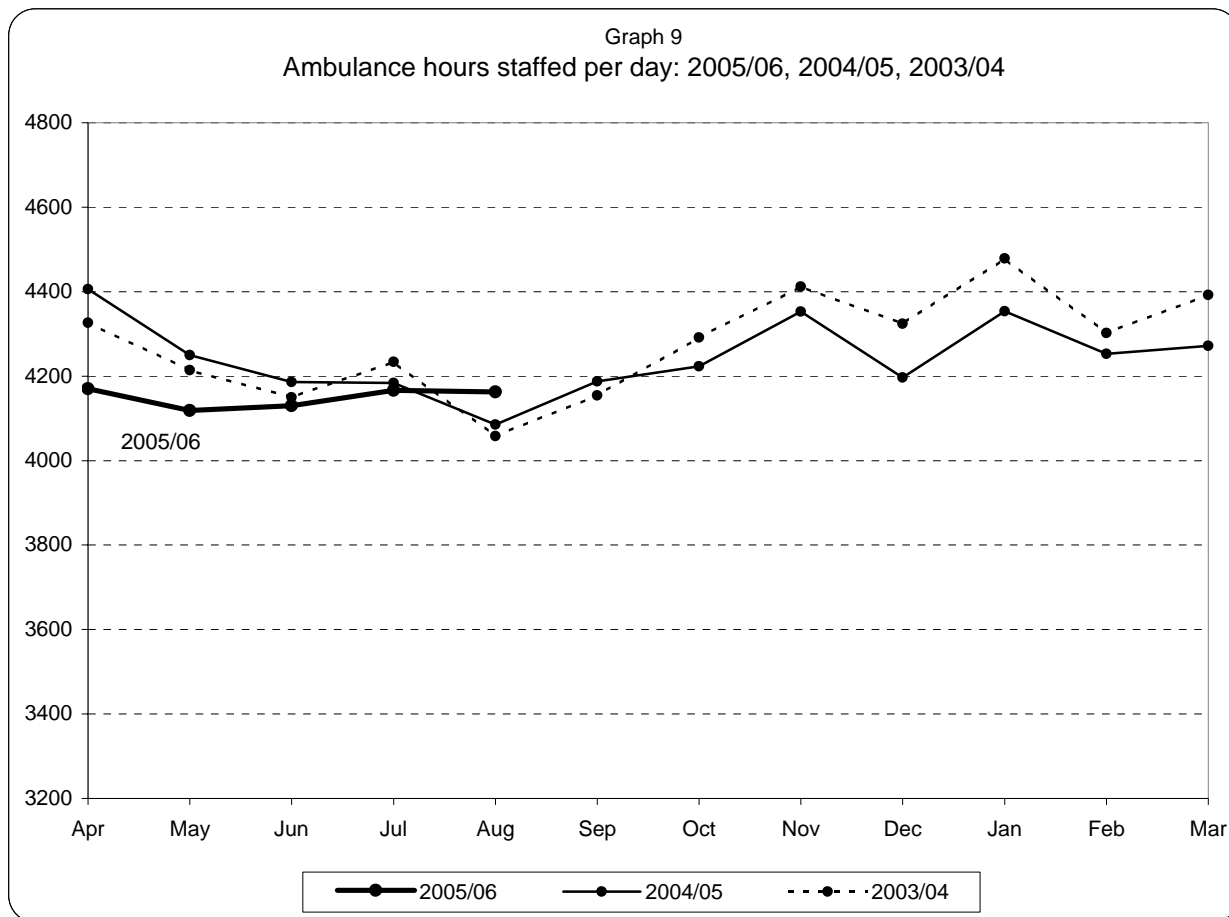
**London Ambulance Service NHS Trust  
Accident and Emergency Service  
Ambulance and FRU staffing**



Note:

1) staffed = plan + additional - unmanned - single

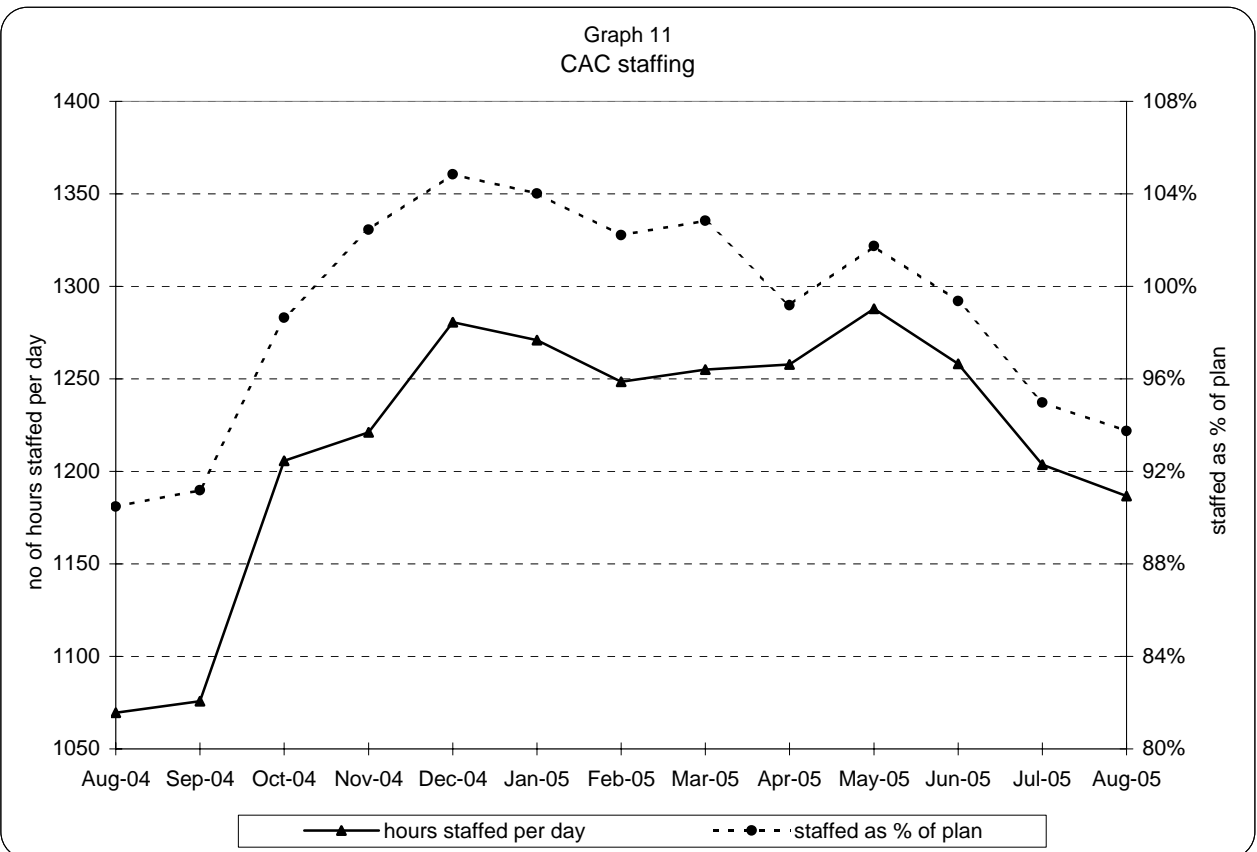
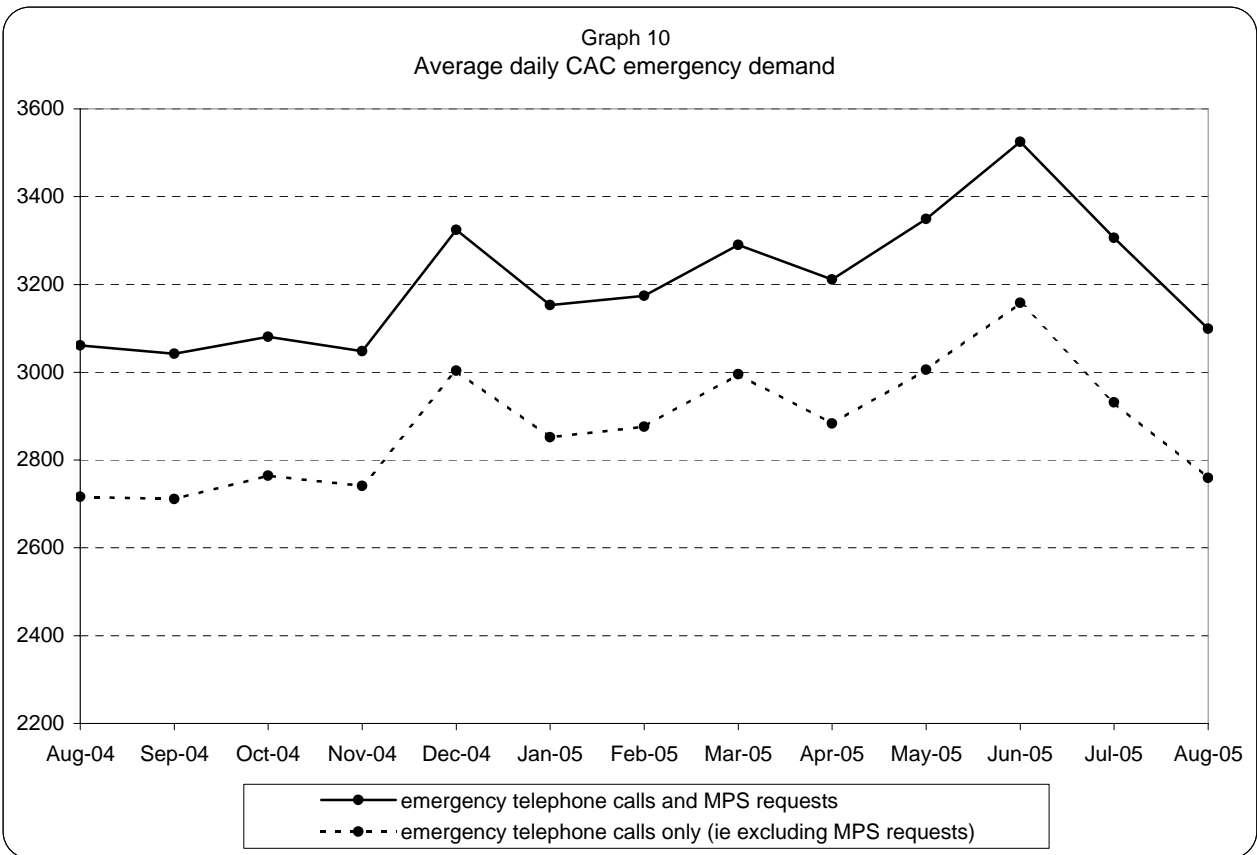
**London Ambulance Service NHS Trust  
Accident and Emergency Service  
Yearly comparison of ambulance staffing**



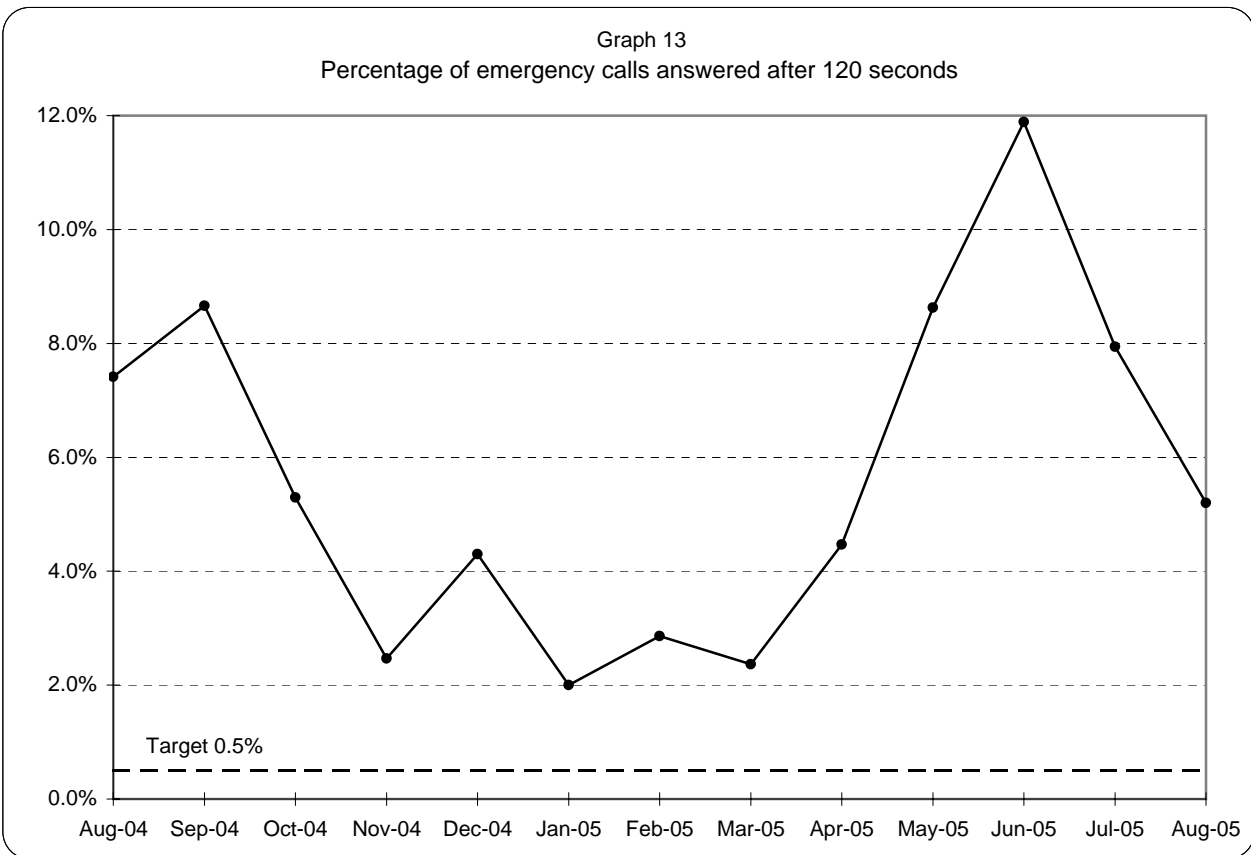
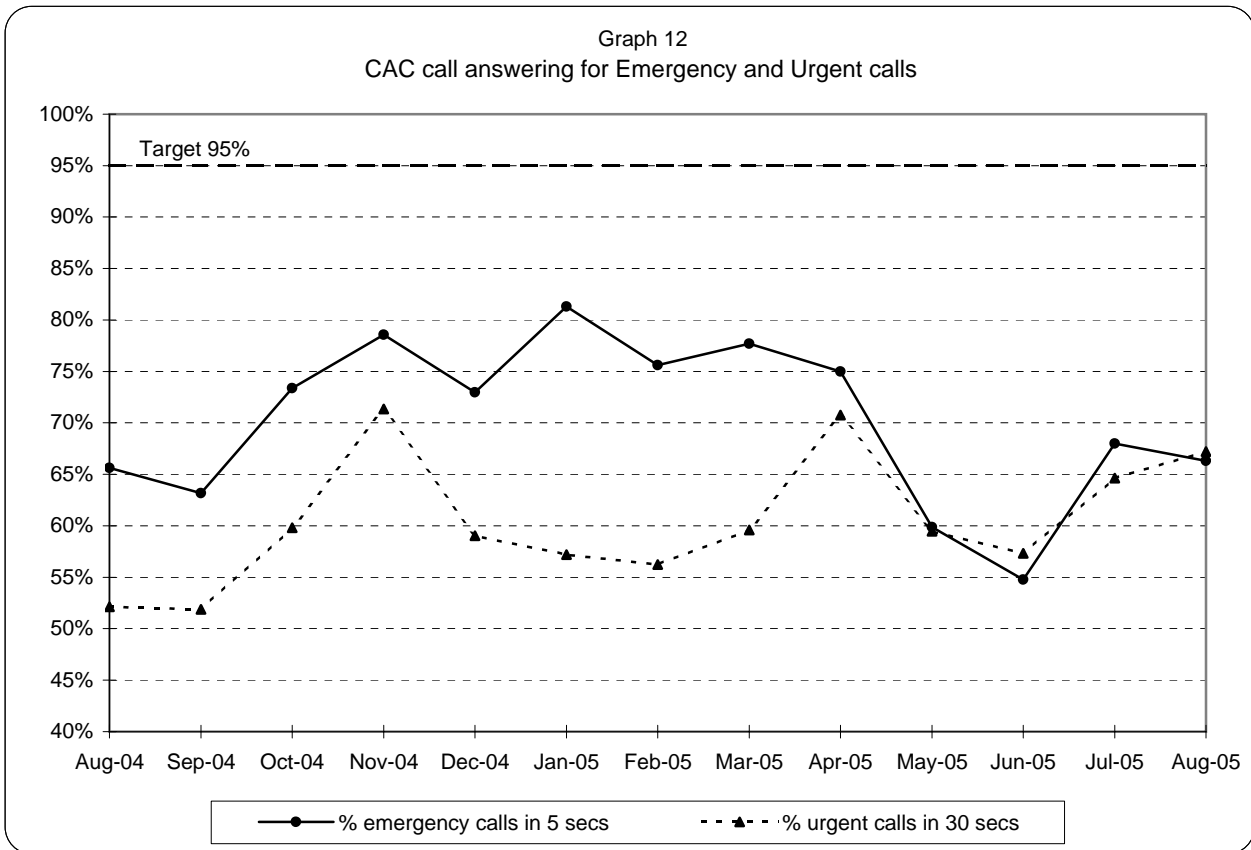
Note:staffed = plan + additional - unmanned - single



## London Ambulance Service NHS Trust Accident and Emergency Service CAC activity and staffing



**London Ambulance Service NHS Trust  
Accident and Emergency Service  
CAC call answering performance**



Note: 95% target applies to both Emergency and Urgent call answering

**London Ambulance Service NHS Trust**  
**Accident and Emergency Service**  
**Category A activity and performance by Primary Care Trust**

Table 3  
Latest month, August 2005

		April 2005		May 2005		June 2005		July 2005		August 2005		Year to date	
		Cat A resp	% cat A resp in 8 mins	Cat A resp	% cat A resp in 8 mins	Cat A resp	% cat A resp in 8 mins	Cat A resp	% cat A resp in 8 mins	Cat A resp	% cat A resp in 8 mins	Cat A resp	% cat A resp in 8 mins
5K5	Brent PCT	839	68%	948	66%	1,013	64%	911	64%	976	72%	4,687	67%
5HX	Ealing PCT	945	72%	977	69%	1,025	66%	992	70%	974	70%	4,913	69%
5H1	Hammersmith & Fulham PCT	506	83%	623	77%	622	74%	568	79%	542	82%	2,861	79%
5K6	Harrow PCT	553	80%	607	80%	623	75%	578	76%	595	81%	2,956	78%
5AT	Hillingdon PCT	752	72%	924	71%	937	69%	886	72%	851	73%	4,350	71%
5HY	Hounslow PCT	675	78%	696	72%	729	70%	756	76%	720	74%	3,576	74%
5LA	Kensington & Chelsea PCT	421	79%	446	76%	410	73%	491	74%	473	77%	2,241	76%
5LC	Westminster PCT	1,049	82%	1,136	80%	1,127	76%	1,213	77%	1,089	79%	5,614	79%
<b>North West London Strategic HA</b>		<b>5,740</b>	<b>76%</b>	<b>6,357</b>	<b>73%</b>	<b>6,486</b>	<b>70%</b>	<b>6,395</b>	<b>73%</b>	<b>6,220</b>	<b>75%</b>	<b>31,198</b>	<b>74%</b>
5A9	Barnet PCT	807	66%	860	62%	913	65%	836	66%	813	72%	4,229	66%
5K7	Camden PCT	745	87%	857	85%	937	84%	898	82%	807	88%	4,244	85%
5C1	Enfield PCT	812	76%	872	74%	902	74%	842	77%	859	77%	4,287	76%
5C9	Haringey PCT	763	77%	850	73%	907	70%	842	72%	849	79%	4,211	74%
5K8	Islington PCT	719	83%	761	83%	788	78%	713	81%	730	84%	3,711	82%
<b>North Central London Strategic HA</b>		<b>3,846</b>	<b>78%</b>	<b>4,200</b>	<b>75%</b>	<b>4,447</b>	<b>74%</b>	<b>4,131</b>	<b>76%</b>	<b>4,058</b>	<b>80%</b>	<b>20,682</b>	<b>76%</b>
5C2	Barking & Dagenham PCT	626	72%	626	73%	663	68%	631	73%	608	77%	3,154	72%
5C3	City & Hackney PCT	826	68%	977	72%	1,005	68%	907	69%	878	75%	4,593	70%
5A4	Havering PCT	557	70%	622	71%	599	70%	607	70%	572	71%	2,957	71%
5C5	Newham PCT	904	74%	1,005	71%	1,018	66%	1,004	73%	957	77%	4,888	72%
5NA	Redbridge PCT	641	77%	738	73%	725	73%	712	79%	642	79%	3,458	76%
5C4	Tower Hamlets PCT	795	70%	809	71%	843	67%	804	74%	880	79%	4,131	72%
5NC	Waltham Forest PCT	675	76%	728	74%	770	77%	706	76%	658	77%	3,537	76%
<b>North East London Strategic HA</b>		<b>5,024</b>	<b>72%</b>	<b>5,505</b>	<b>72%</b>	<b>5,623</b>	<b>70%</b>	<b>5,371</b>	<b>73%</b>	<b>5,195</b>	<b>77%</b>	<b>26,718</b>	<b>73%</b>
5AX	Bexley PCT	504	78%	563	79%	622	78%	594	78%	530	82%	2,813	79%
5A7	Bromley PCT	734	76%	791	73%	786	73%	726	75%	721	75%	3,758	74%
5A8	Greenwich PCT	765	70%	877	70%	785	72%	796	73%	830	74%	4,053	72%
5LD	Lambeth PCT	963	74%	1,081	72%	1,118	74%	1,073	72%	1,088	79%	5,323	74%
5LF	Lewisham PCT	753	75%	866	77%	877	70%	817	75%	863	81%	4,176	76%
5LE	Southwark PCT	917	82%	1,044	79%	1,109	77%	1,085	78%	1,091	82%	5,246	79%
<b>South East London Strategic HA</b>		<b>4,636</b>	<b>76%</b>	<b>5,222</b>	<b>75%</b>	<b>5,297</b>	<b>74%</b>	<b>5,091</b>	<b>75%</b>	<b>5,123</b>	<b>79%</b>	<b>25,369</b>	<b>76%</b>
5K9	Croydon PCT	920	71%	991	67%	1,046	68%	1,076	67%	983	71%	5,016	69%
5A5	Kingston PCT	374	74%	363	74%	370	77%	359	74%	408	75%	1,874	75%
5M6	Richmond & Twickenham PCT	386	70%	399	68%	393	65%	400	66%	401	66%	1,979	67%
5M7	Sutton & Merton PCT	802	77%	913	79%	955	79%	883	79%	884	79%	4,437	79%
5LG	Wandsworth PCT	689	75%	787	74%	827	73%	744	75%	740	78%	3,787	75%
<b>South West London Strategic HA</b>		<b>3,171</b>	<b>74%</b>	<b>3,453</b>	<b>73%</b>	<b>3,591</b>	<b>73%</b>	<b>3,462</b>	<b>72%</b>	<b>3,416</b>	<b>74%</b>	<b>17,093</b>	<b>73%</b>
	Lowest (excl out of London)		66%		62%		64%		64%		66%		66%
	Highest (excl out of London)		87%		85%		84%		82%		88%		85%
	Range		20%		23%		20%		18%		23%		19%