



London Ambulance Service
NHS Trust

Information Pack for Trust Board

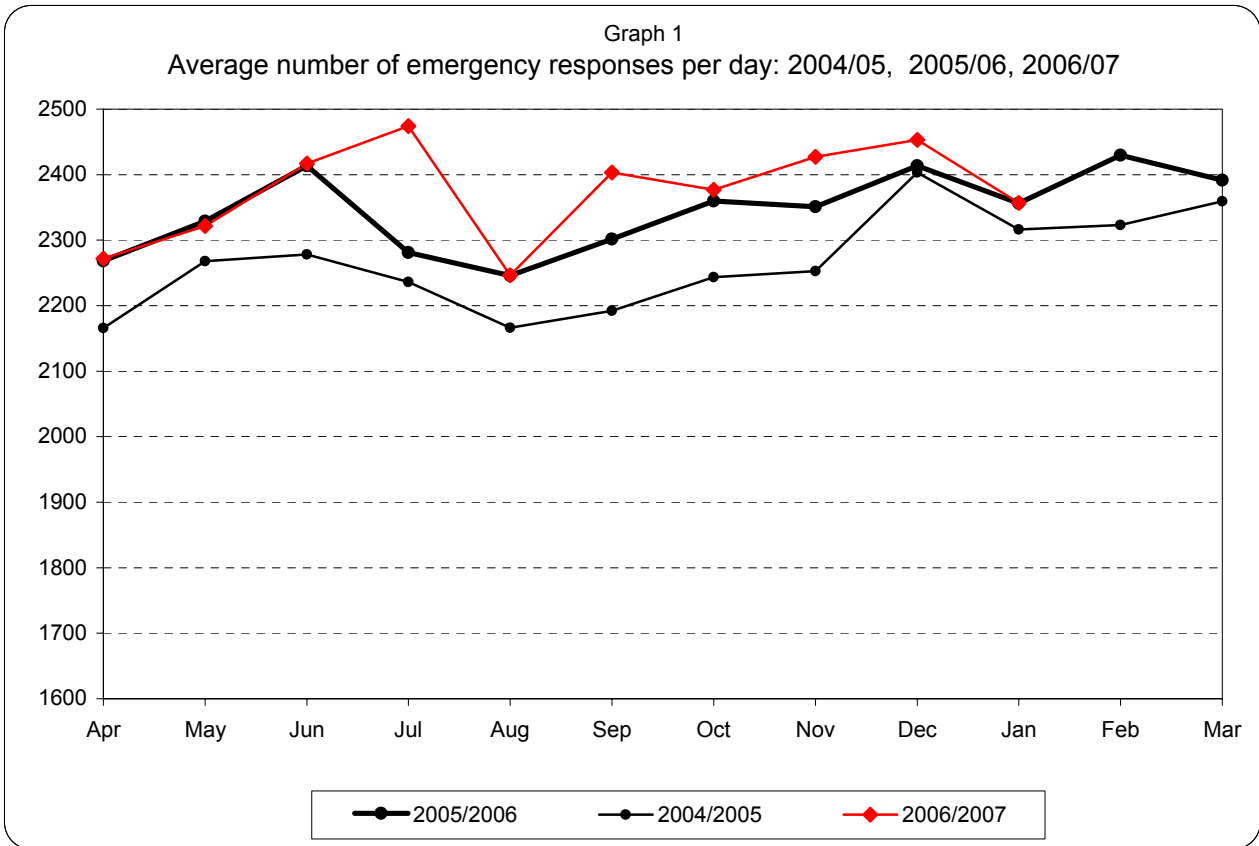
December 2006

Please note:

PRF data entry is not yet complete for December 06

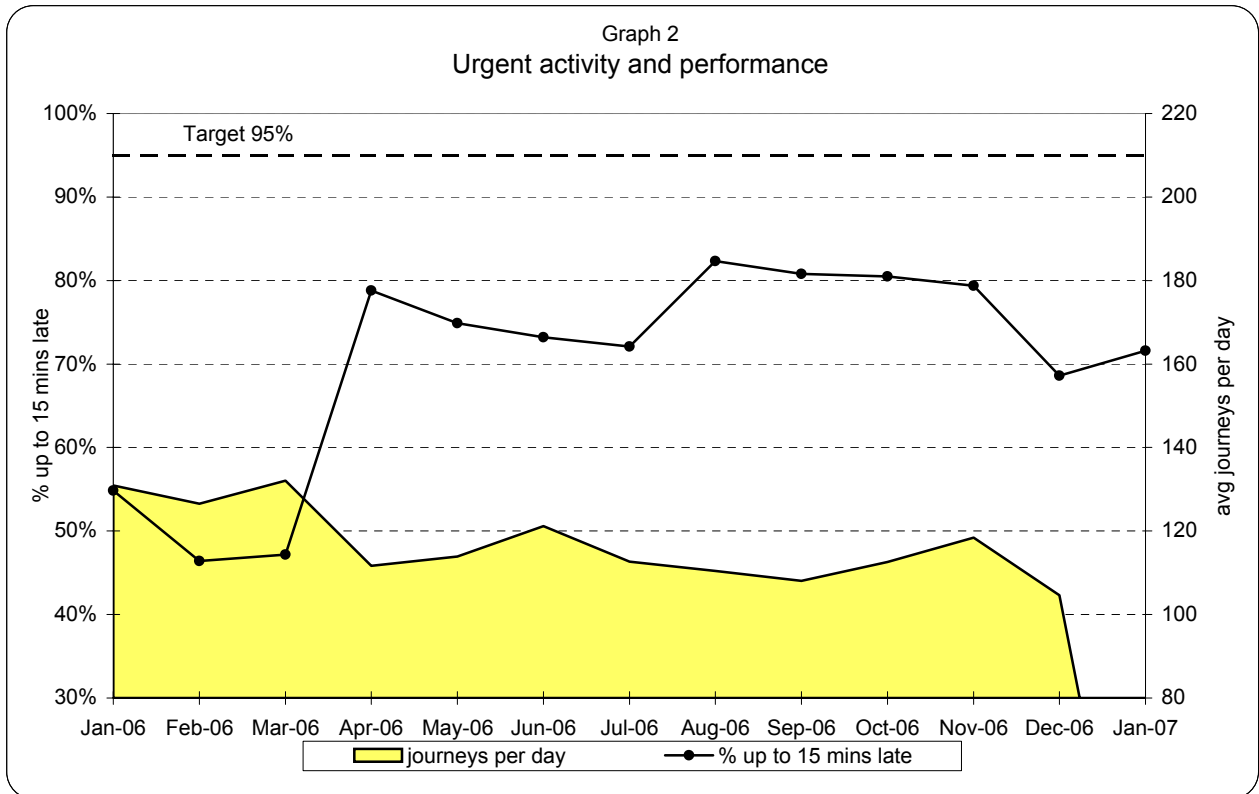
Data for January has been included, up to the 21st January 07

**London Ambulance Service NHS Trust
Accident and Emergency Service
Emergency activity and Urgent activity and performance**



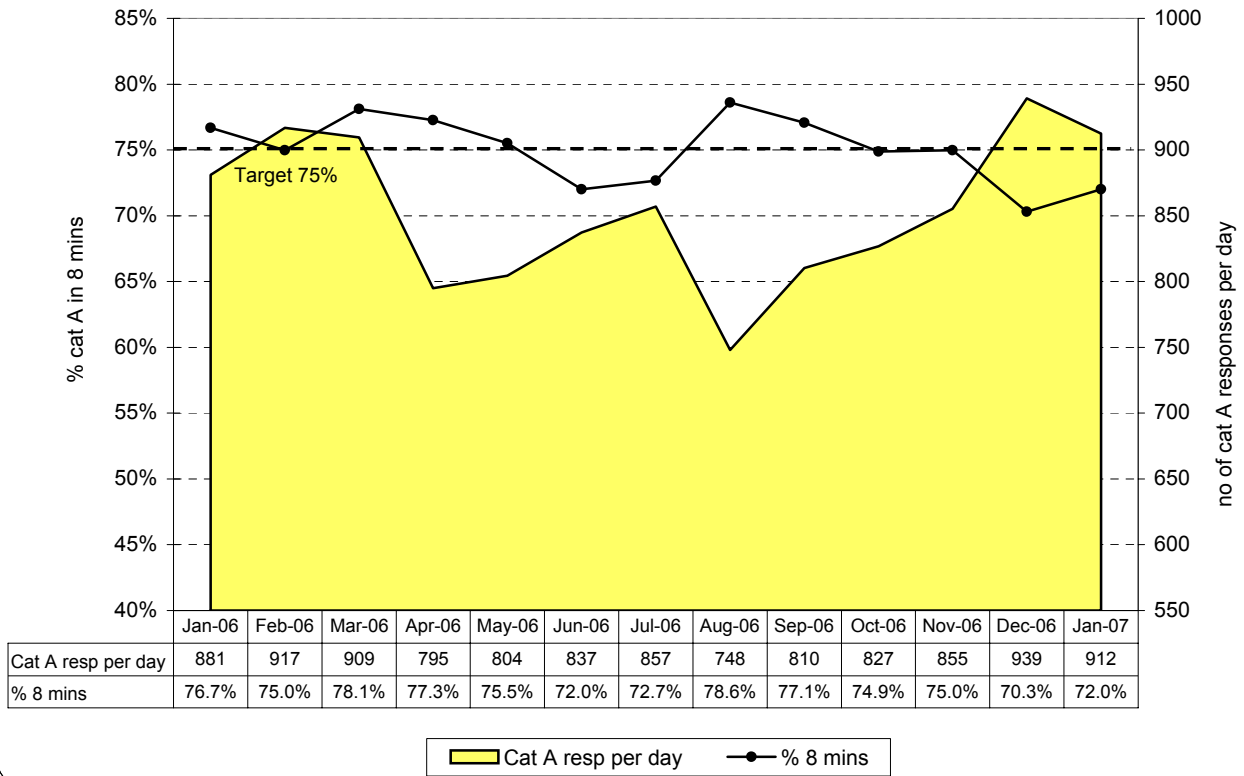
Emergency responses: monthly and year to date comparison

Dec 06 v Dec 05	Apr 06-Dec 06 v Apr 05-Dec 05
+1.6%	+2.0%

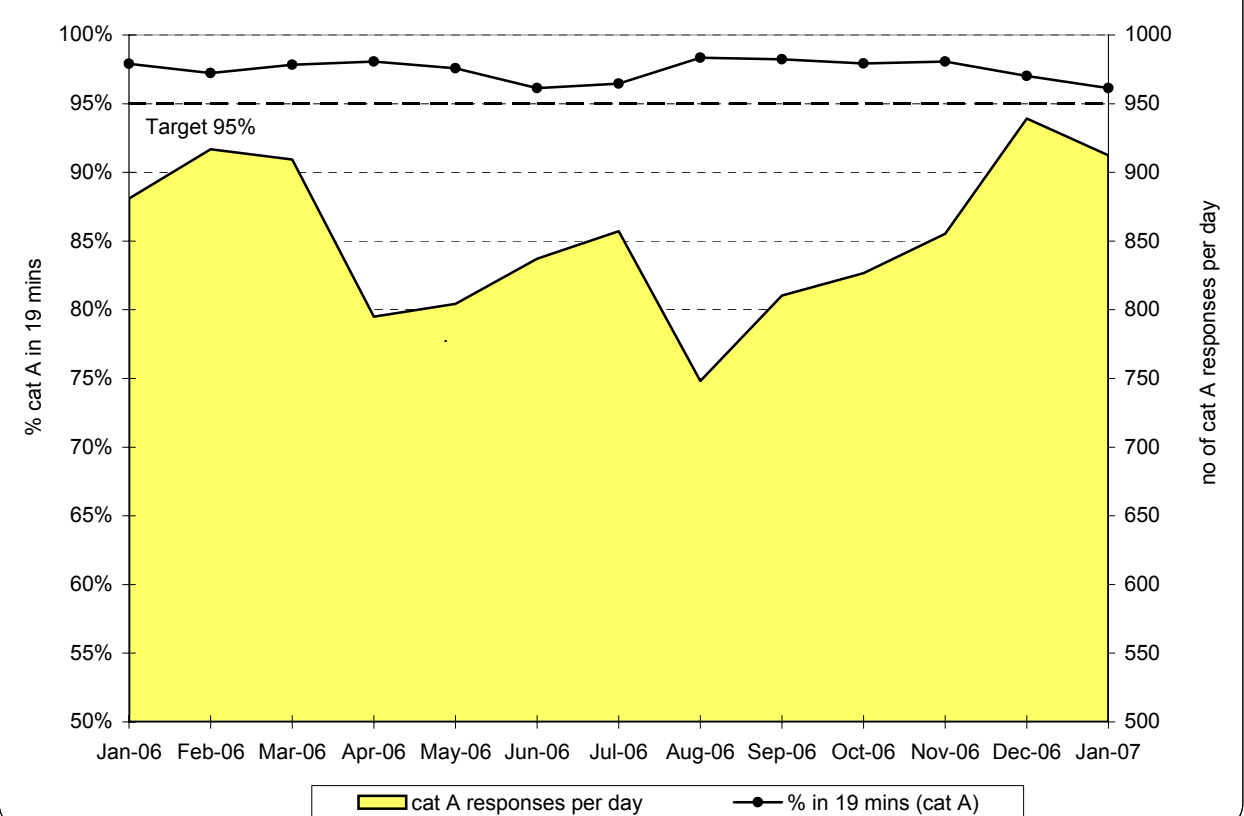


**London Ambulance Service NHS Trust
Accident and Emergency Service
Emergency responses: 8 and 19 minute response activity and performance**

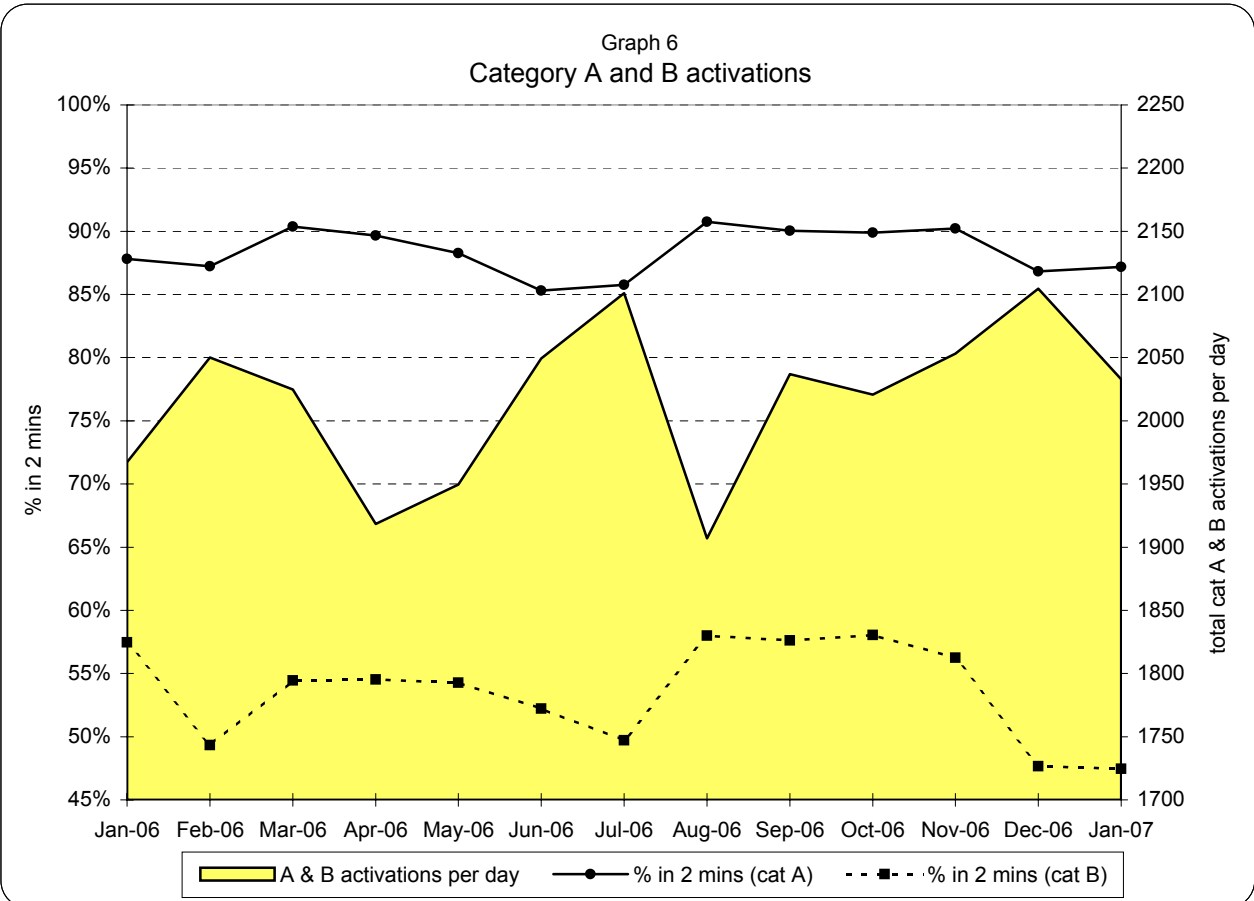
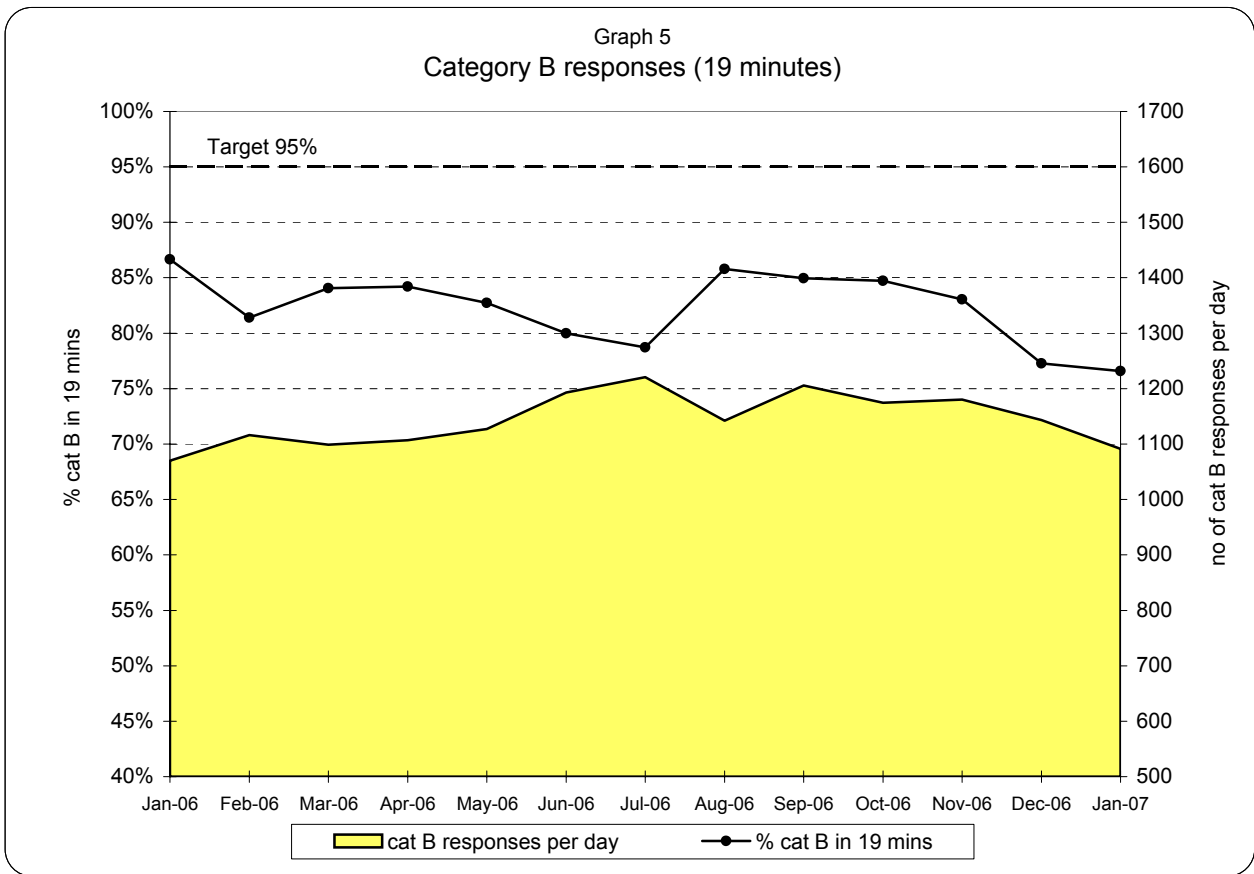
Graph 3
Category A responses for all responders (8 minutes)



Graph 4
Category A responses (19 minutes)

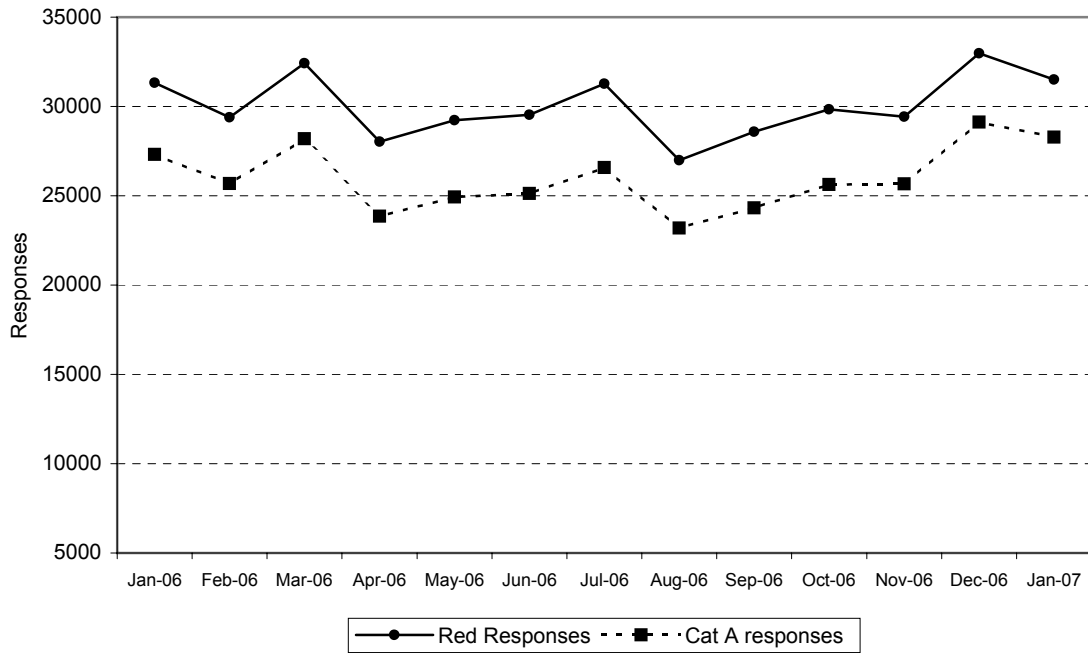


**London Ambulance Service NHS Trust
Accident and Emergency Service
19 minute response activity and performance (Cat B) and Cat A and B activations**

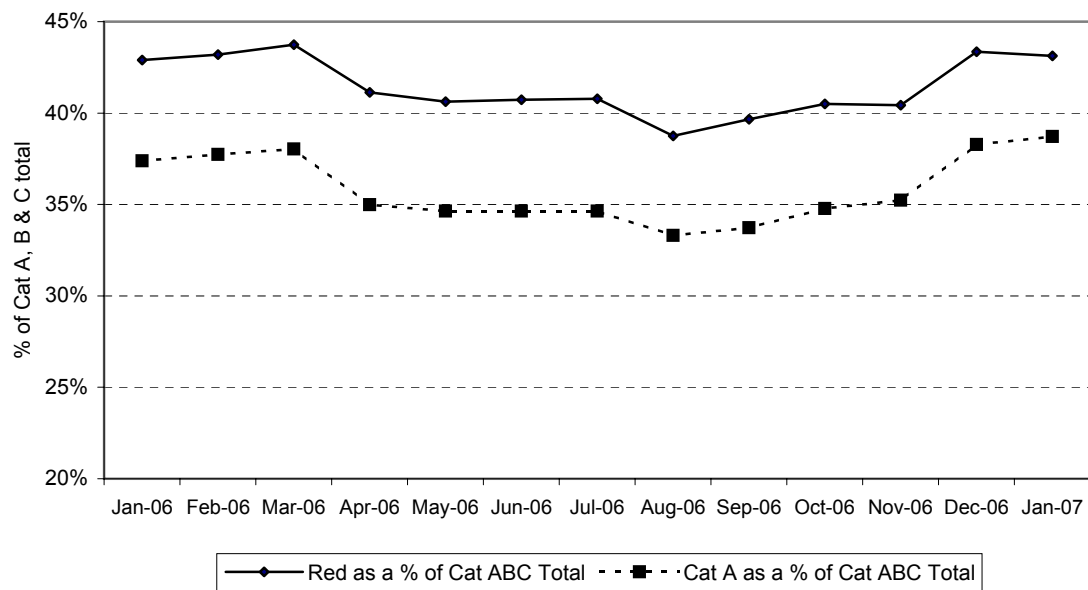


**London Ambulance Service NHS Trust
Accident and Emergency Service
Category A and Red Responses**

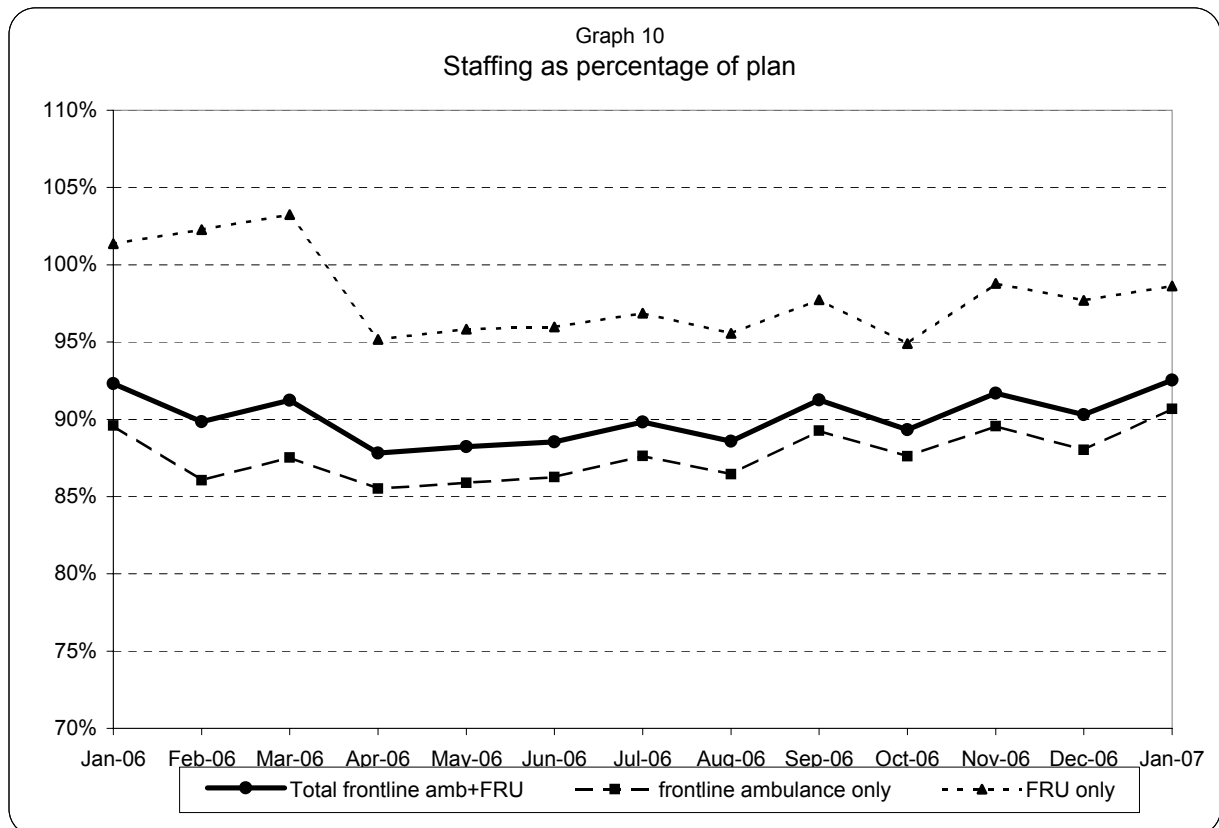
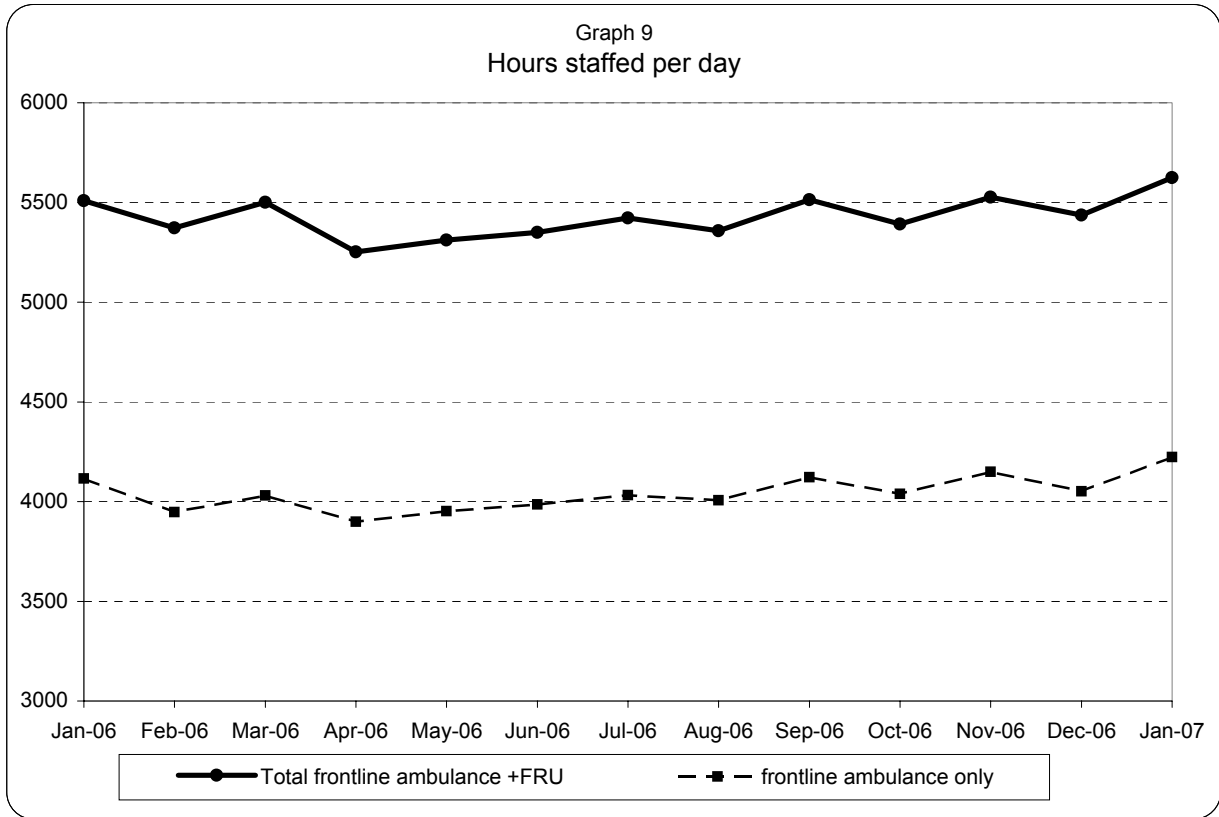
Graph 7
Total Category A and Red Responses



Graph 8
Category A and Red Responses as a percentage of the total Cat A, B & C demand

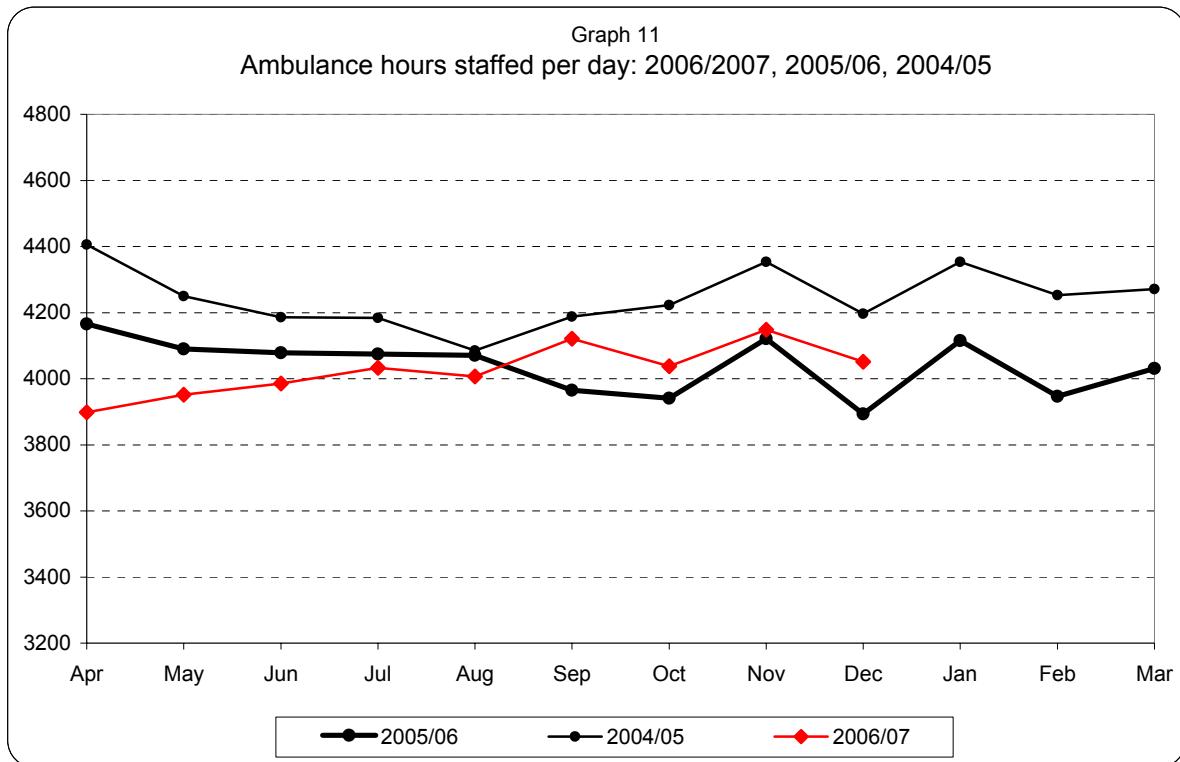


**London Ambulance Service NHS Trust
Accident and Emergency Service
Ambulance and FRU staffing**



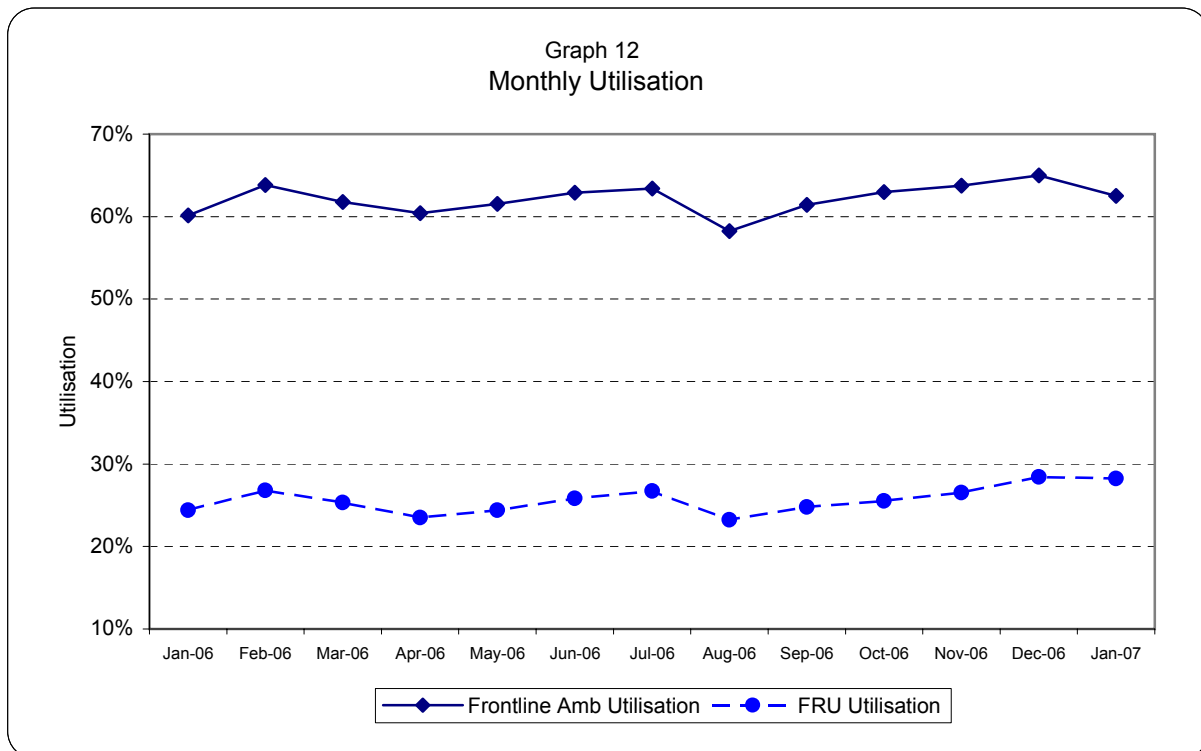
Note: staffed = (plan + additional - unmanned - single)/plan

**London Ambulance Service NHS Trust
Accident and Emergency Service
Yearly comparison of ambulance staffing and Average Monthly Utilisation**

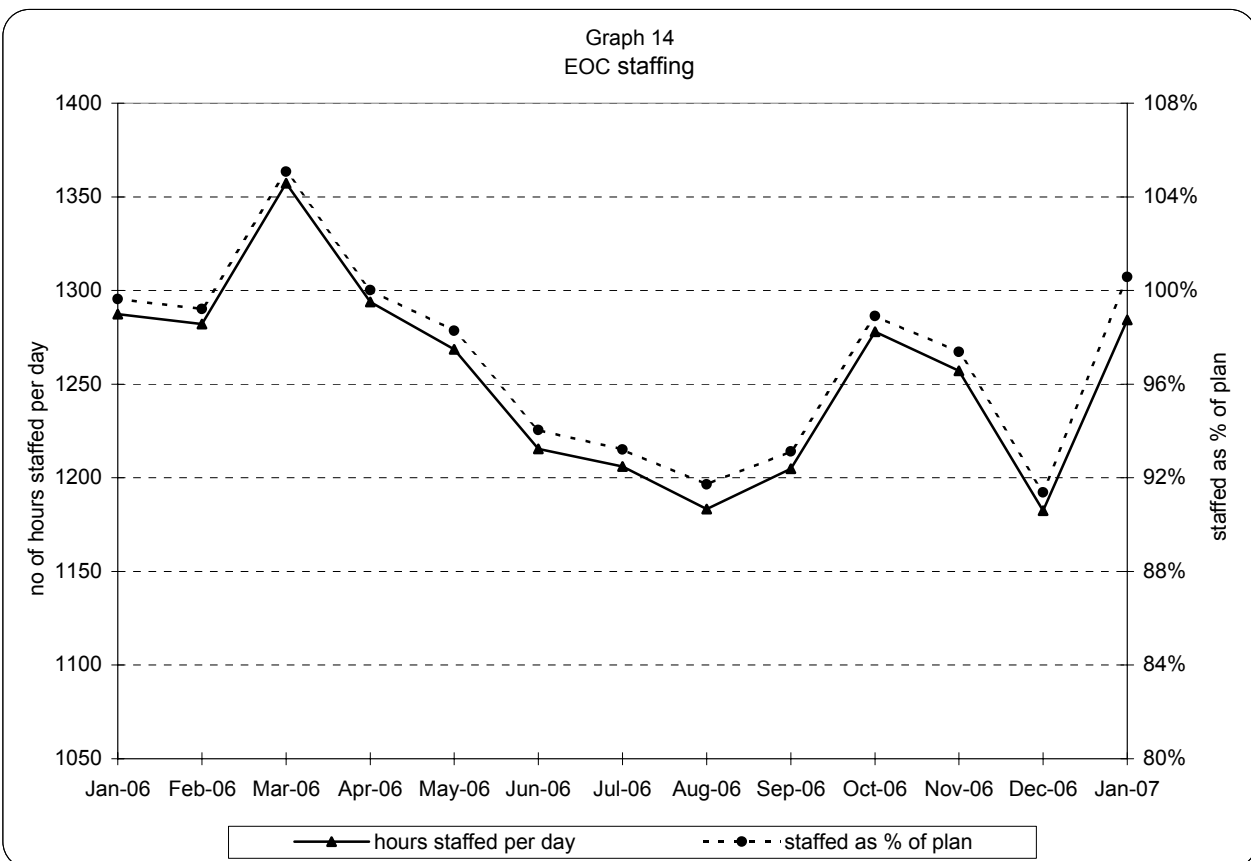
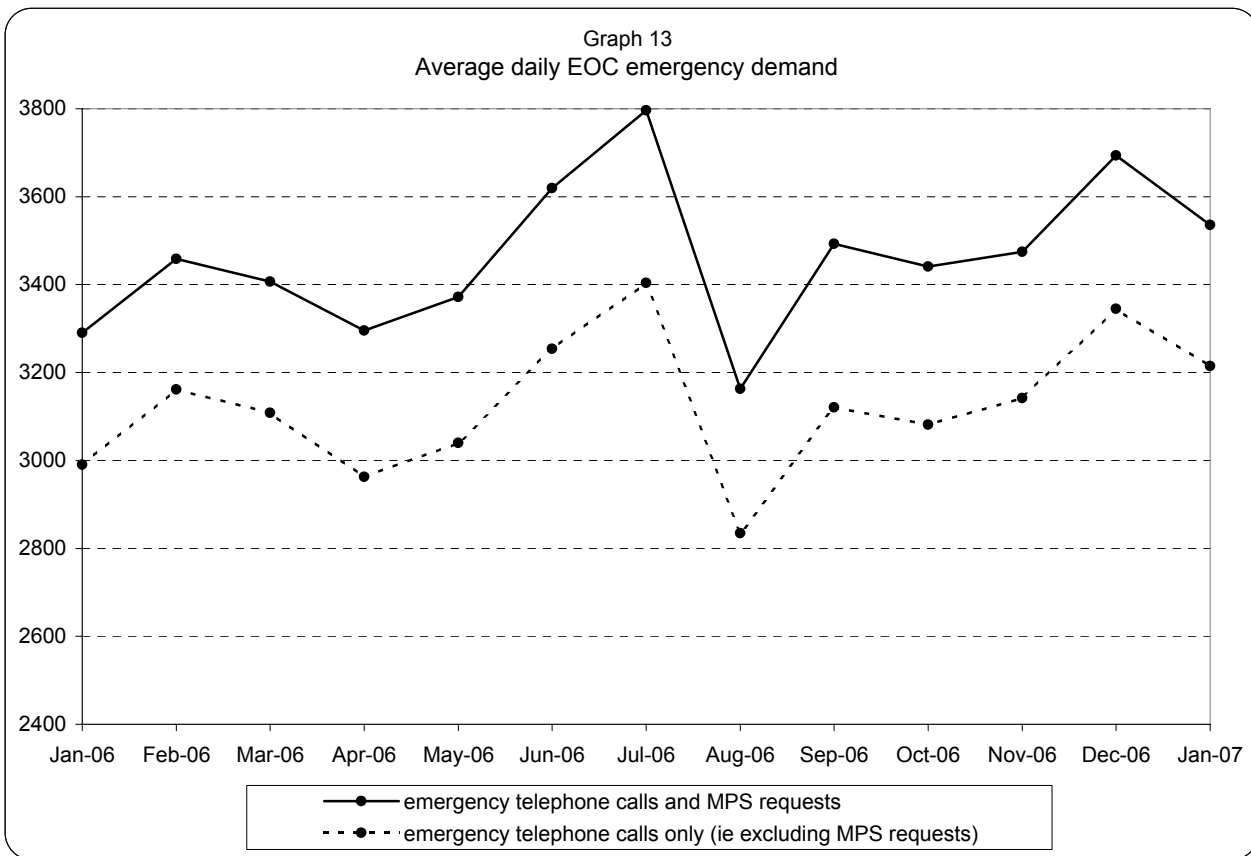


Note: staffed = plan + additional - unmanned - single

The 04/05 figures are taken from the old manning system. 05/06 figures onwards are from the new system

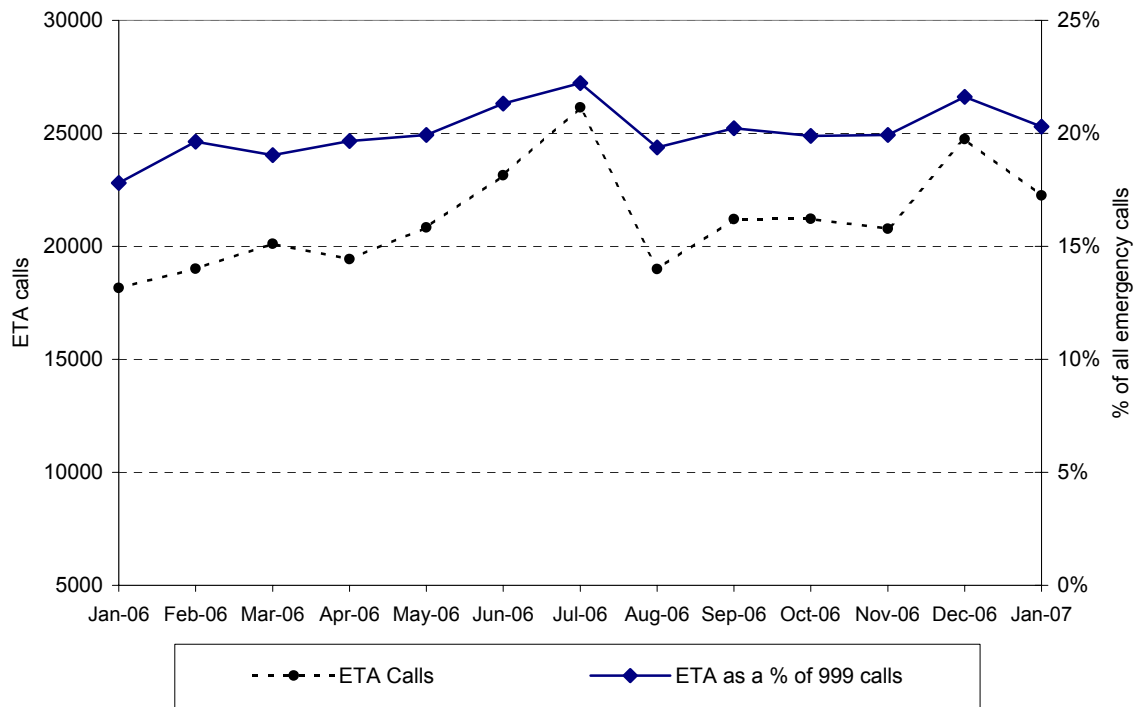


**London Ambulance Service NHS Trust
Accident and Emergency Service
EOC activity and staffing**

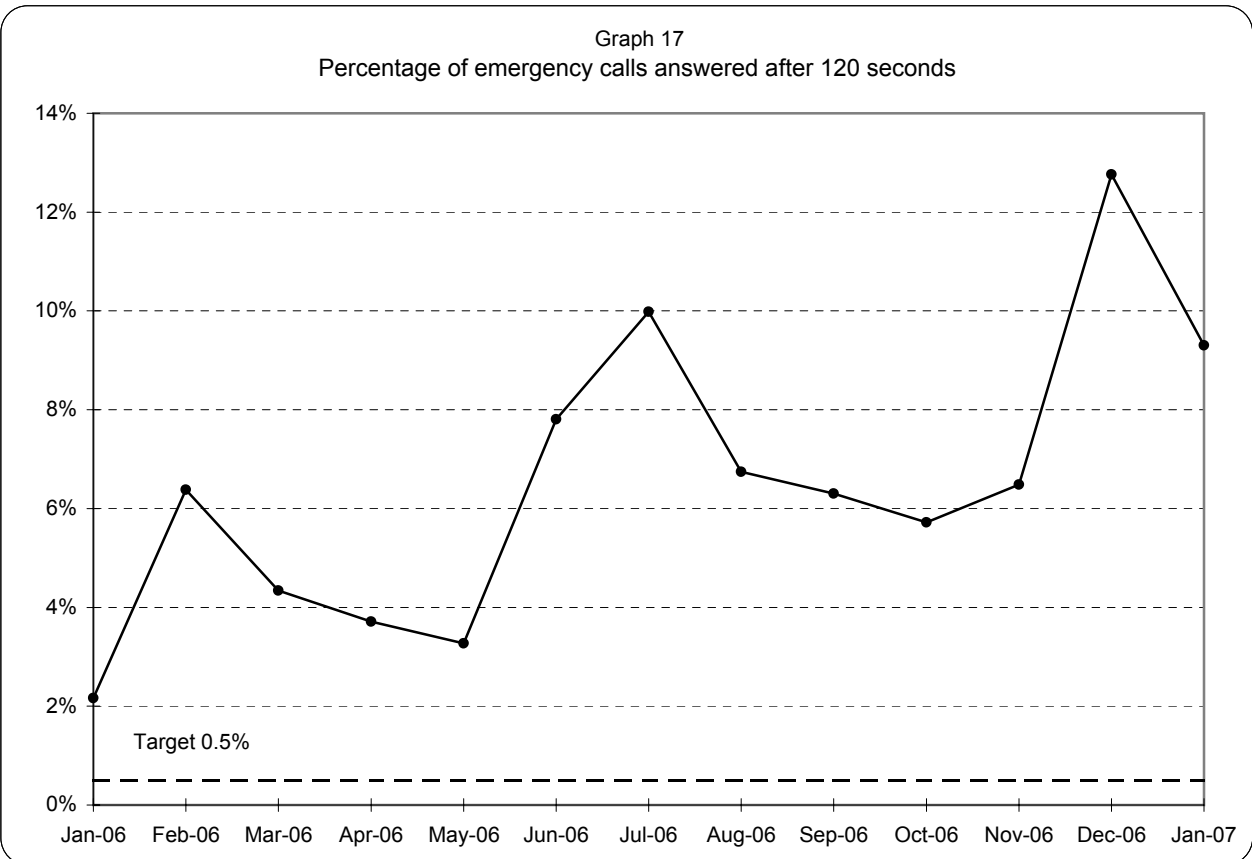
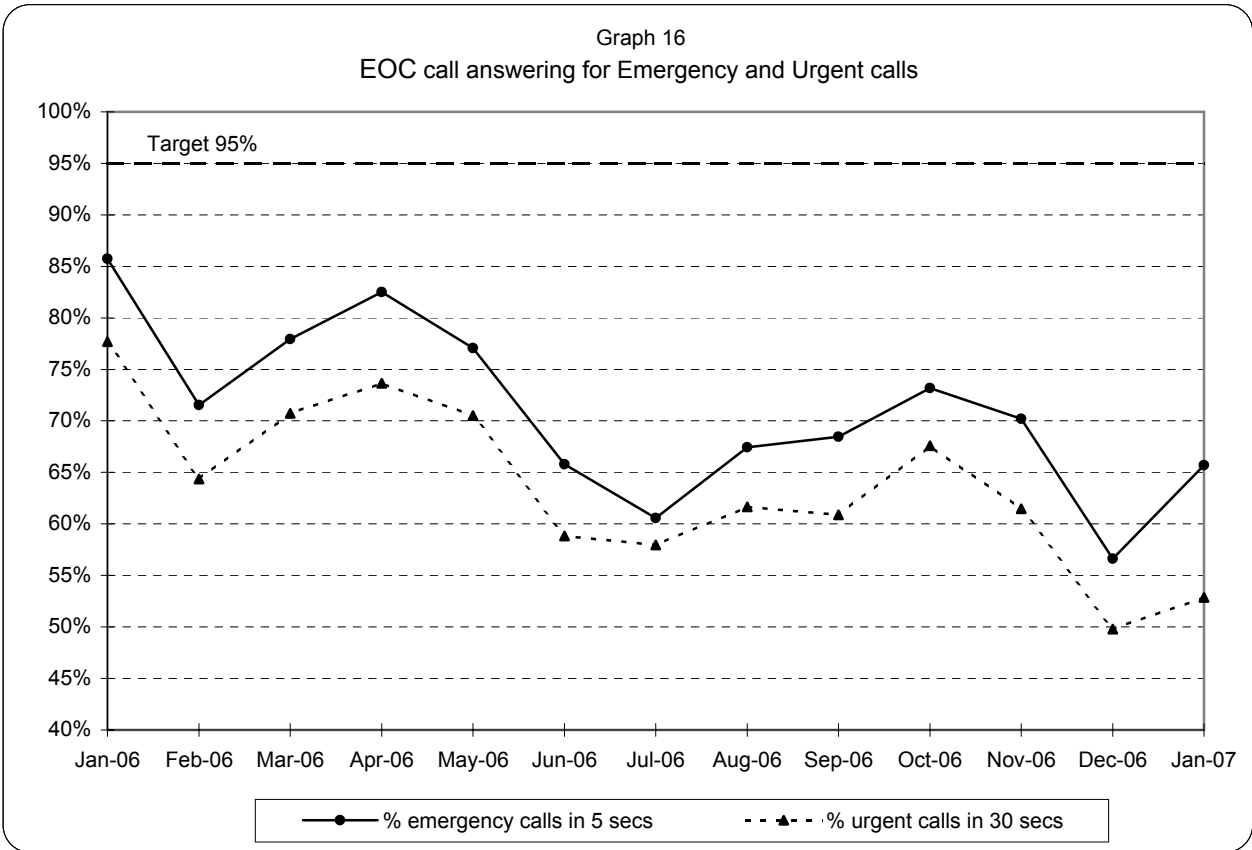


**London Ambulance Service NHS Trust
Accident and Emergency Service
ETA calls as a percentage of all emergency calls**

Graph 15
ETA calls as a percentage of all emergency calls



**London Ambulance Service NHS Trust
Accident and Emergency Service
EOC call answering performance**



Note: 95% target applies to both Emergency and Urgent call answering

London Ambulance Service NHS Trust
Accident and Emergency Service
Category A activity and performance by Primary Care Trust

Table 1

		Oct-06			Nov-06			Dec-06			Year to date		
		Cat A resp	Cat A in 8	% cat A resp in 8 mins	Cat A resp	Cat A in 8	% cat A resp in 8 mins	Cat A resp	Cat A in 8	% cat A resp in 8 mins	Cat A resp	Cat A in 8	% cat A resp in 8 mins
5K5	Brent PCT	946	700	74%	972	737	76%	1,104	751	68%	8,433	6,111	72%
5HX	Ealing PCT	1,028	758	74%	1,032	701	68%	1,162	736	63%	9,213	6,586	71%
5H1	Hammersmith & Fulham PCT	646	491	76%	581	464	80%	719	525	73%	5,498	4,299	78%
5K6	Harrow PCT	577	483	84%	589	463	79%	691	510	74%	5,392	4,317	80%
5AT	Hillingdon PCT	915	678	74%	929	689	74%	1,067	683	64%	8,324	6,099	73%
5HY	Hounslow PCT	771	583	76%	764	541	71%	865	570	66%	6,705	4,973	74%
5LA	Kensington & Chelsea PCT	481	374	78%	466	347	74%	507	351	69%	4,087	3,063	75%
5LC	Westminster PCT	1,143	872	76%	1,159	868	75%	1,296	949	73%	10,335	8,004	77%
North West London Strategic HA		6,507	4,939	76%	6,492	4,810	74%	7,411	5,075	68%	57,987	43,452	75%
5A9	Barnet PCT	911	643	71%	989	733	74%	1,058	733	69%	8,451	5,954	70%
5K7	Camden PCT	918	762	83%	875	723	83%	920	751	82%	7,788	6,560	84%
5C1	Enfield PCT	918	750	82%	916	710	78%	1,080	784	73%	8,139	6,286	77%
5C9	Haringey PCT	878	662	75%	854	652	76%	1,010	688	68%	7,801	5,802	74%
5K8	Islington PCT	822	664	81%	787	632	80%	883	708	80%	7,085	5,741	81%
North Central London Strategic HA		4,447	3,481	78%	4,421	3,450	78%	4,951	3,664	74%	39,264	30,343	77%
5C2	Barking & Dagenham PCT	661	493	75%	689	499	72%	796	499	63%	6,063	4,372	72%
5C3	City & Hackney PCT	962	719	75%	936	707	76%	1,072	729	68%	8,663	6,331	73%
5A4	Havering PCT	612	459	75%	648	434	67%	825	501	61%	5,779	4,030	70%
5C5	Newham PCT	1,016	754	74%	1,016	790	78%	1,122	788	70%	8,968	6,491	72%
5NA	Redbridge PCT	728	539	74%	776	589	76%	855	557	65%	6,539	4,759	73%
5C4	Tower Hamlets PCT	814	568	70%	847	580	68%	988	612	62%	7,705	5,258	68%
5NC	Waltham Forest PCT	770	565	73%	730	551	75%	814	596	73%	6,939	5,171	75%
North East London Strategic HA		5,563	4,097	74%	5,642	4,150	74%	6,472	4,282	66%	50,656	36,412	72%
5AX	Bexley PCT	635	480	76%	586	442	75%	749	512	68%	5,430	4,170	77%
5A7	Bromley PCT	835	587	70%	817	596	73%	943	583	62%	7,321	5,205	71%
5A8	Greenwich PCT	837	599	72%	785	610	78%	896	596	67%	7,310	5,484	75%
5LD	Lambeth PCT	1,082	785	73%	1,052	762	72%	1,146	806	70%	9,522	7,118	75%
5LF	Lewisham PCT	850	651	77%	901	688	76%	984	704	72%	7,702	5,726	74%
5LE	Southwark PCT	1,089	836	77%	1,115	885	79%	1,235	914	74%	9,923	7,593	77%
South East London Strategic HA		5,328	3,938	74%	5,256	3,983	76%	5,953	4,115	69%	47,208	35,296	75%
5K9	Croydon PCT	1,111	786	71%	1,126	814	72%	1,227	788	64%	9,540	6,959	73%
5A5	Kingston PCT	377	282	75%	415	332	80%	530	371	70%	3,655	2,767	76%
5M6	Richmond & Twickenham PCT	446	327	73%	478	332	69%	559	369	66%	3,972	2,816	71%
5M7	Sutton & Merton PCT	968	702	73%	912	684	75%	1,051	719	68%	8,375	6,332	76%
5LG	Wandsworth PCT	819	604	74%	864	664	77%	878	626	71%	7,182	5,436	76%
South West London Strategic HA		3,721	2,701	73%	3,795	2,826	74%	4,245	2,873	68%	32,724	24,310	74%
	Lowest (excl out of London)			70%			67%			61%			68%
	Highest (excl out of London)			84%			83%			82%			84%
	Range			14%			16%			21%			16%