



London Ambulance Service
NHS Trust

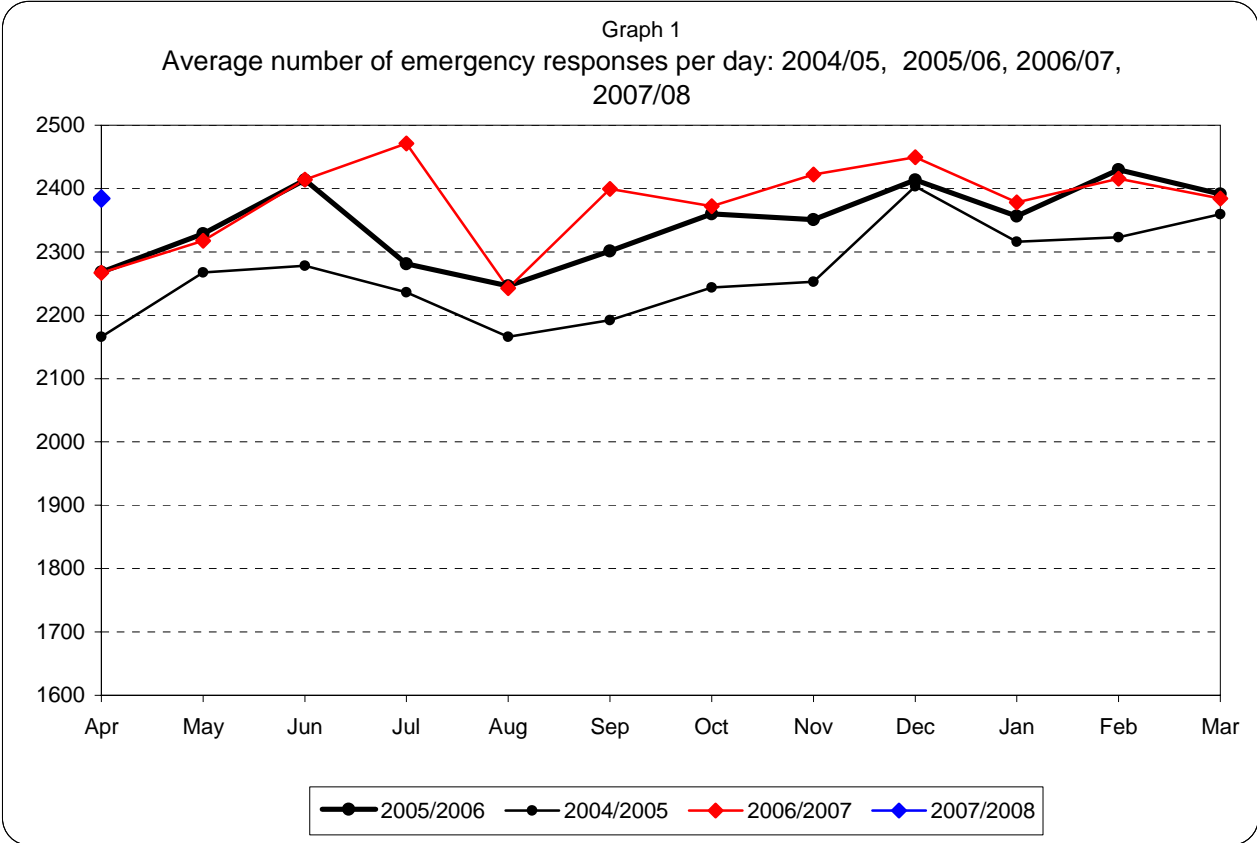
Information Pack for Trust Board

April 2007

Please note:

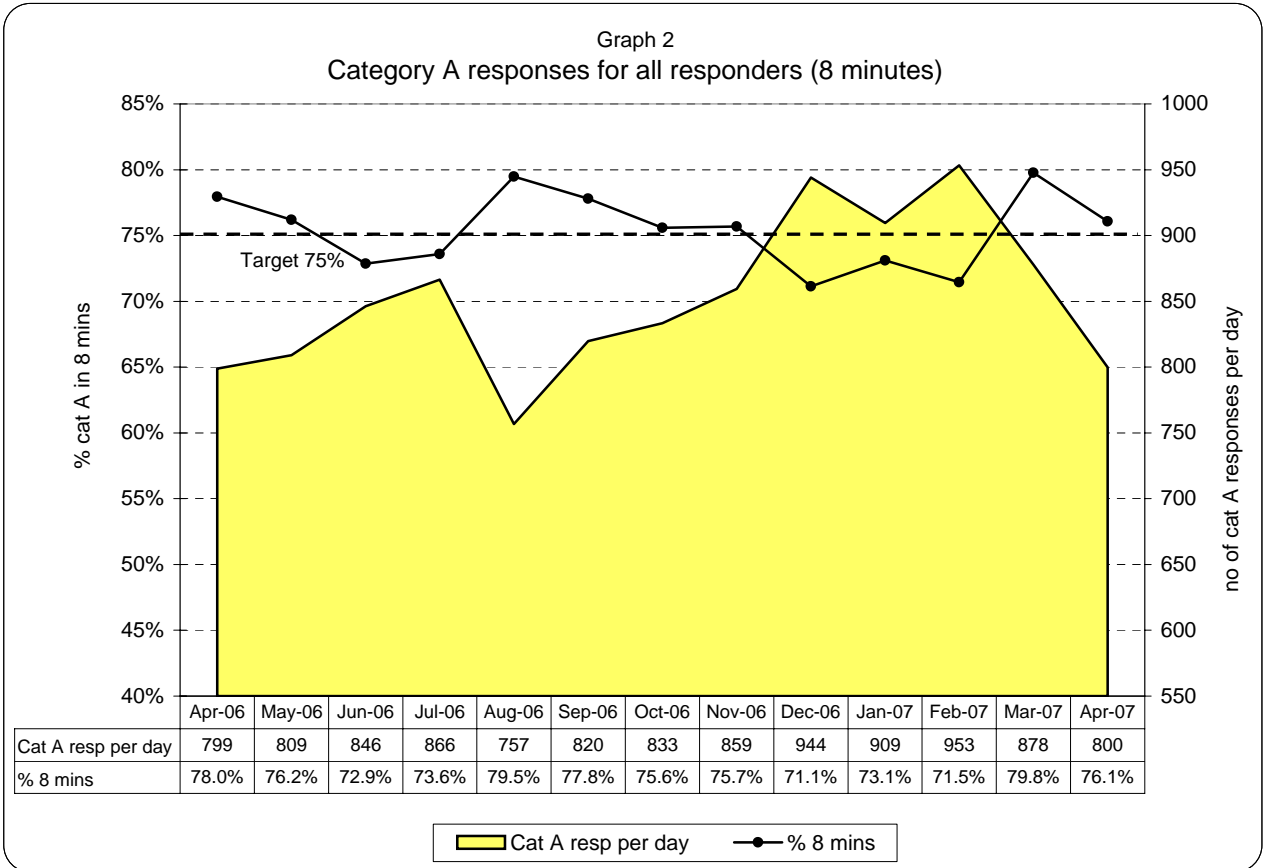
PRF data entry is up to 23/04/07

**London Ambulance Service NHS Trust
Accident and Emergency Service
Emergency activity and Category A and performance**

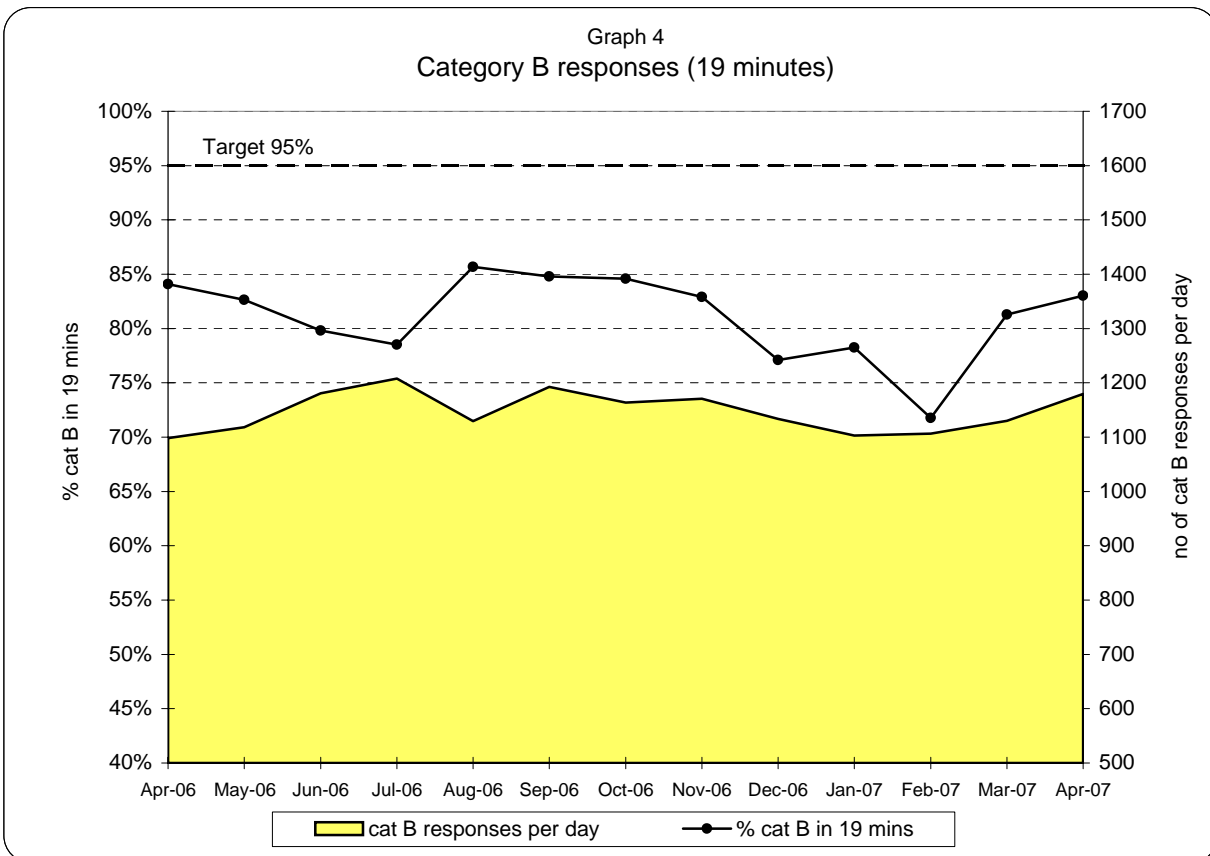
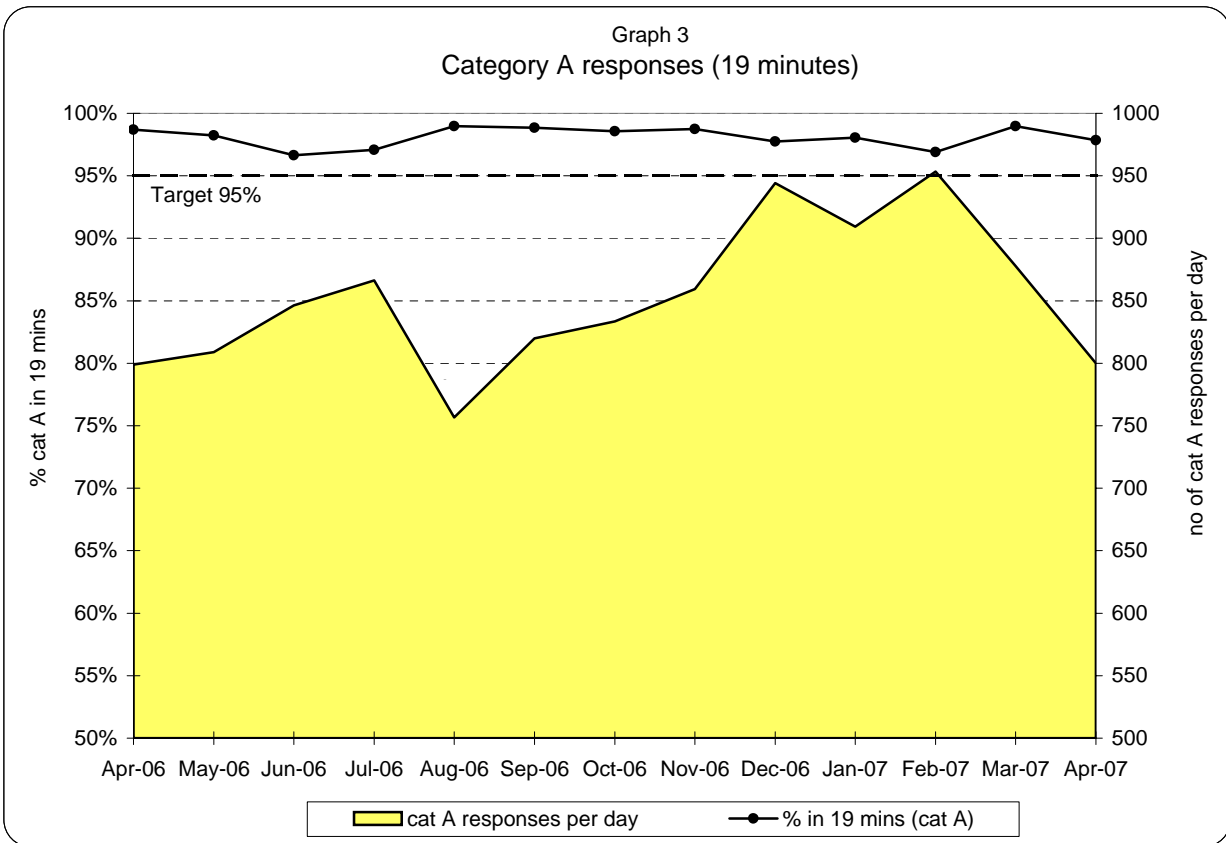


Emergency responses: monthly and year to date comparison

Apr 07 v Apr 06	year so far 07 v year so far 06
+5.2%	+5.2%

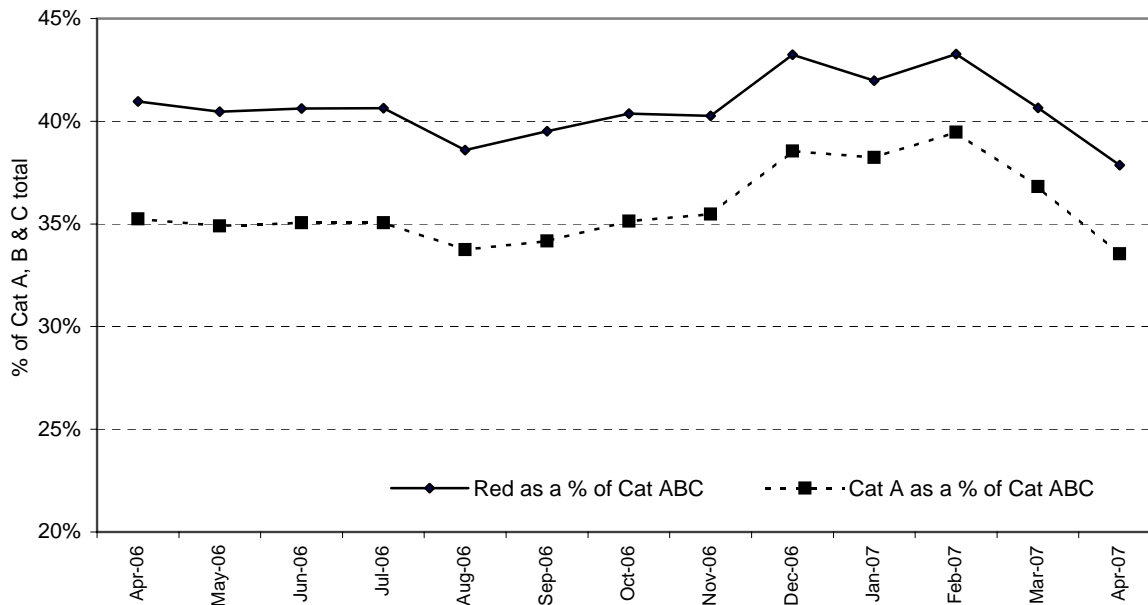


**London Ambulance Service NHS Trust
Accident and Emergency Service
Category A and Category B 19 minute response activity and performance**



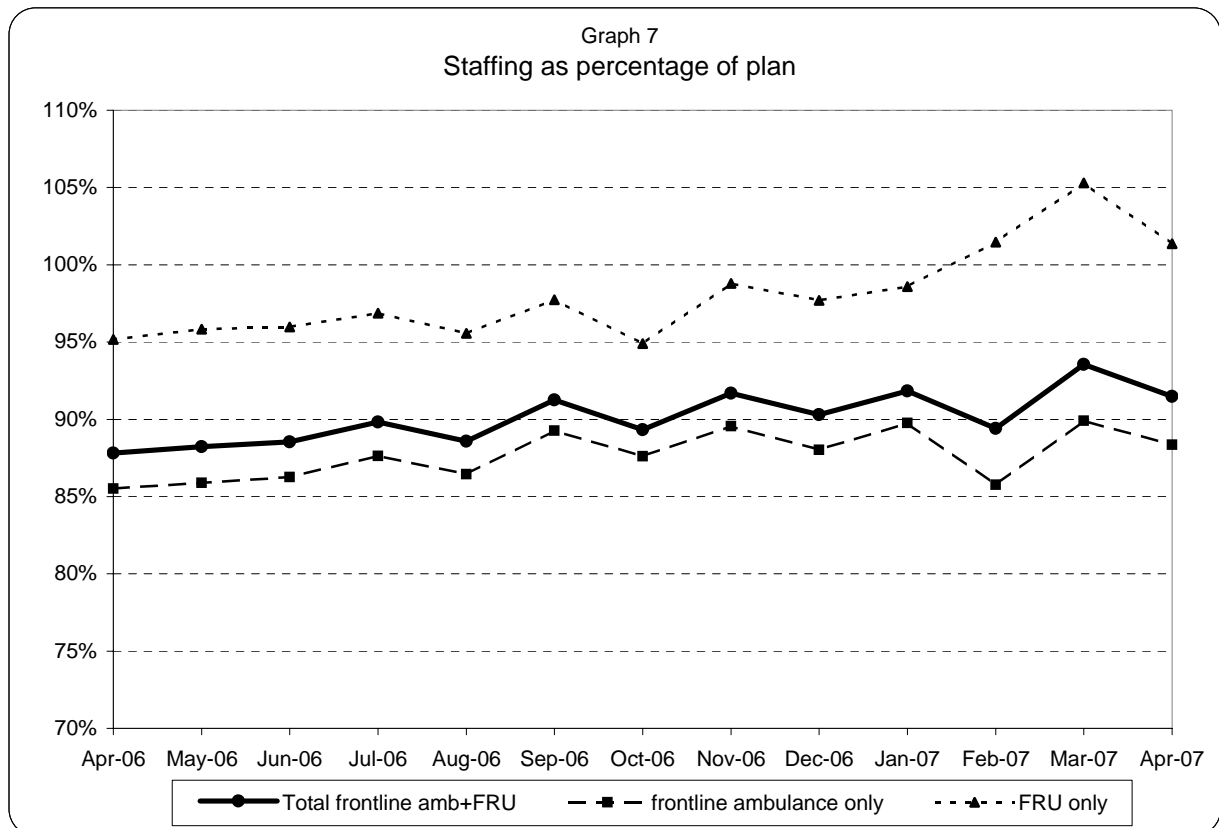
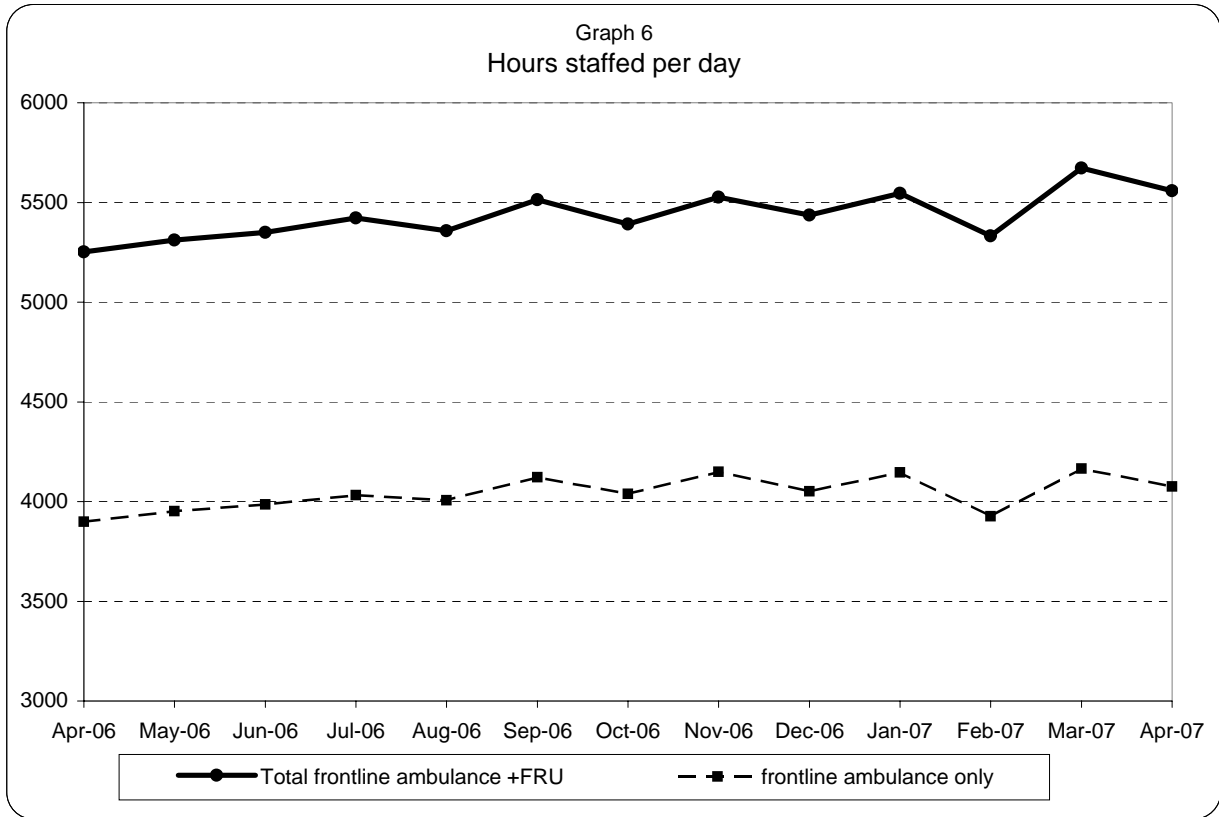
**London Ambulance Service NHS Trust
Accident and Emergency Service
Category A and Red Responses as a percentage of the total Cat A, B & C demand**

Graph 5
Category A and Red Responses as a percentage of the total Cat A, B & C demand



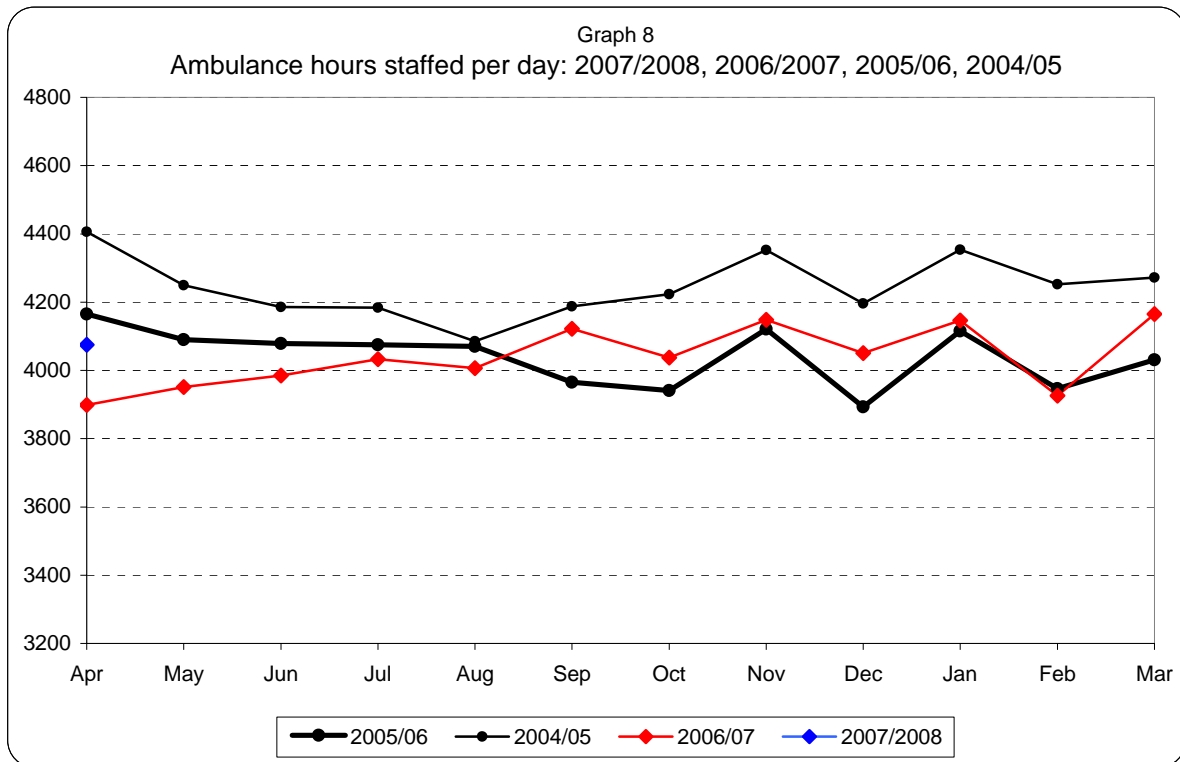
	Apr-06	May-06	Jun-06	Jul-06	Aug-06	Sep-06	Oct-06	Nov-06	Dec-06	Jan-07	Feb-07	Mar-07	Apr-07
Red as a % of Cat ABC	41%	40%	41%	41%	39%	40%	40%	40%	43%	42%	43%	41%	38%
Cat A as a % of Cat ABC	35%	35%	35%	35%	34%	34%	35%	35%	39%	38%	39%	37%	34%

**London Ambulance Service NHS Trust
Accident and Emergency Service
Ambulance and FRU staffing**



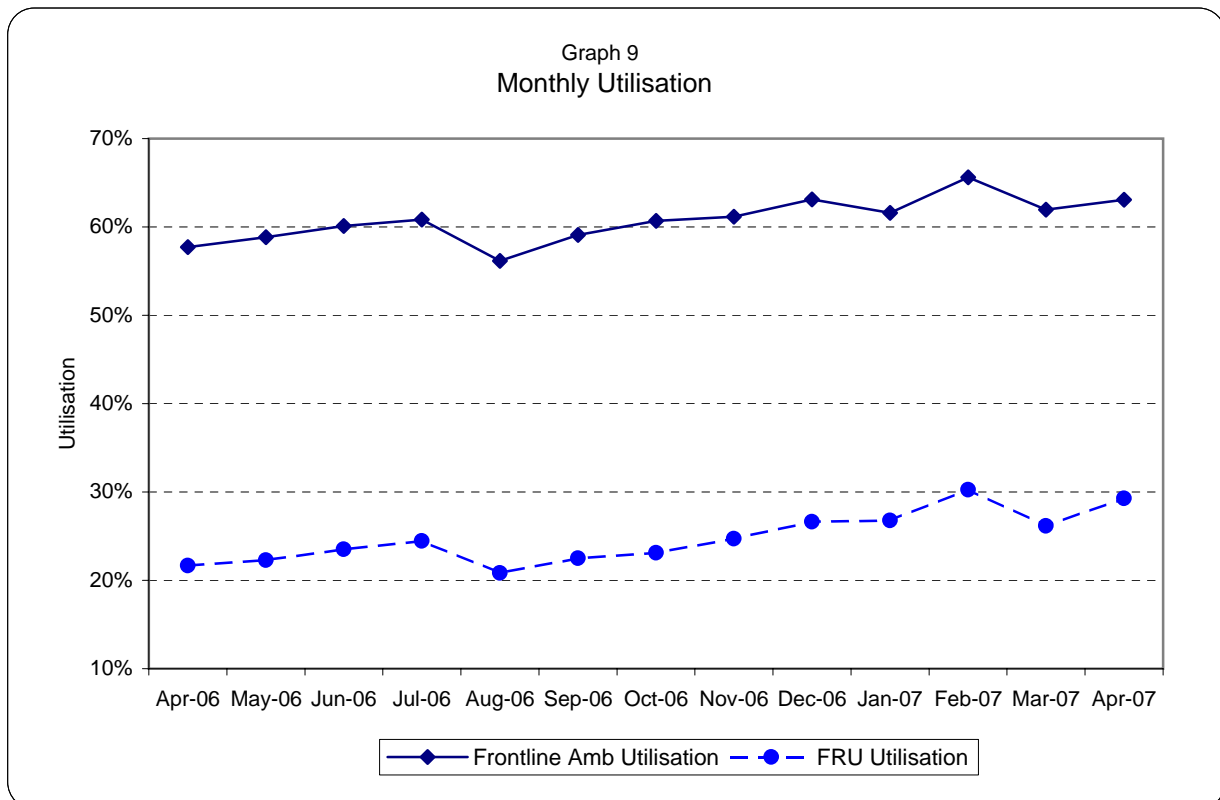
Note: staffed = (plan + additional - unmanned - single)/plan

**London Ambulance Service NHS Trust
Accident and Emergency Service
Yearly comparison of ambulance staffing and Average Monthly Utilisation**

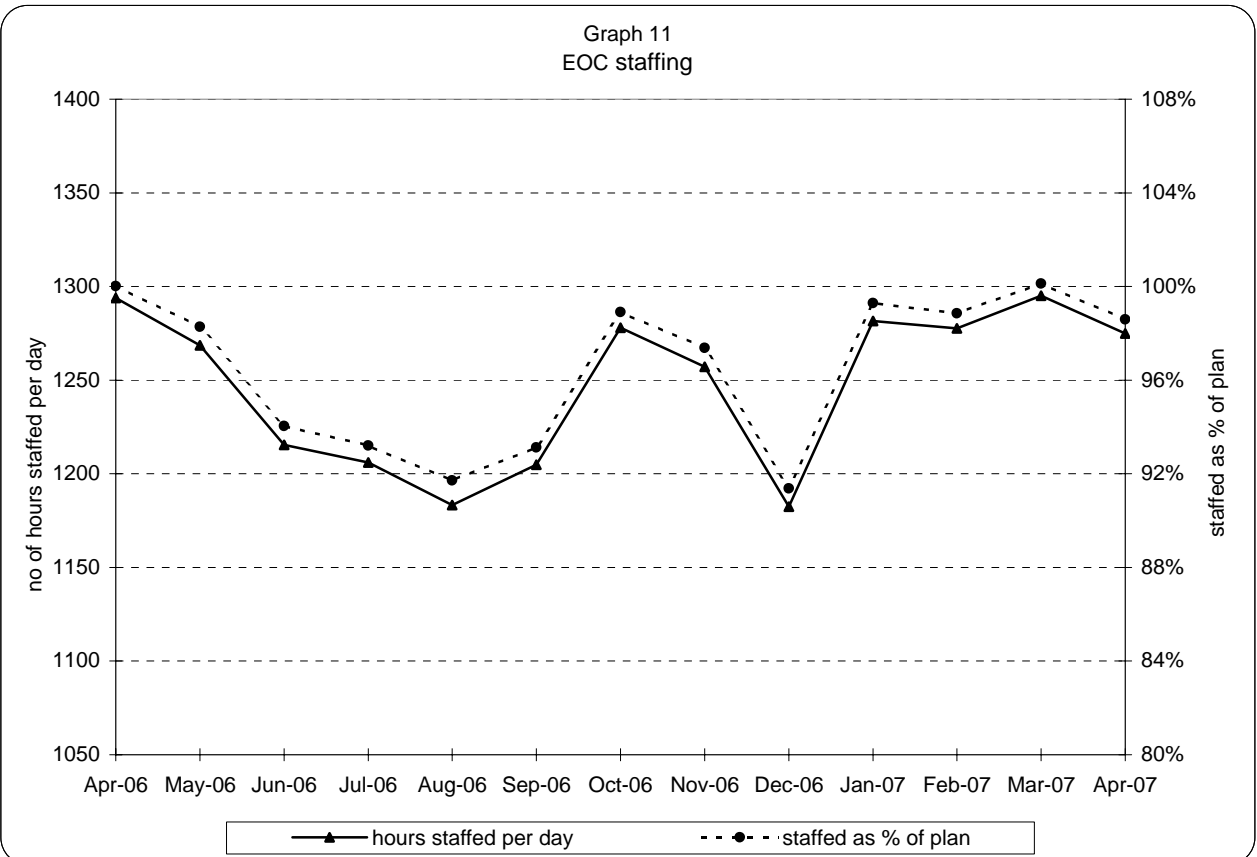
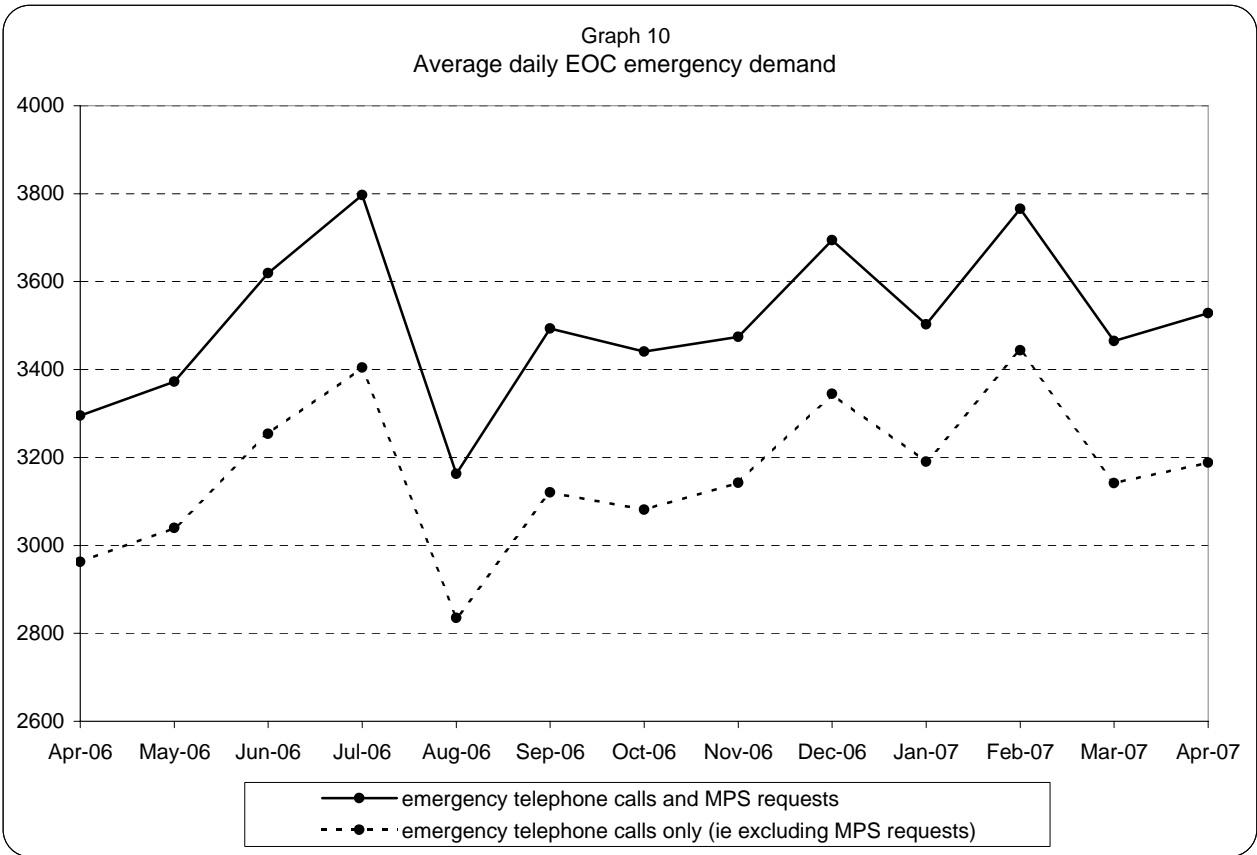


Note: staffed = plan + additional - unmanned - single

The 04/05 figures are taken from the old manning system. 05/06 figures onwards are from the new system

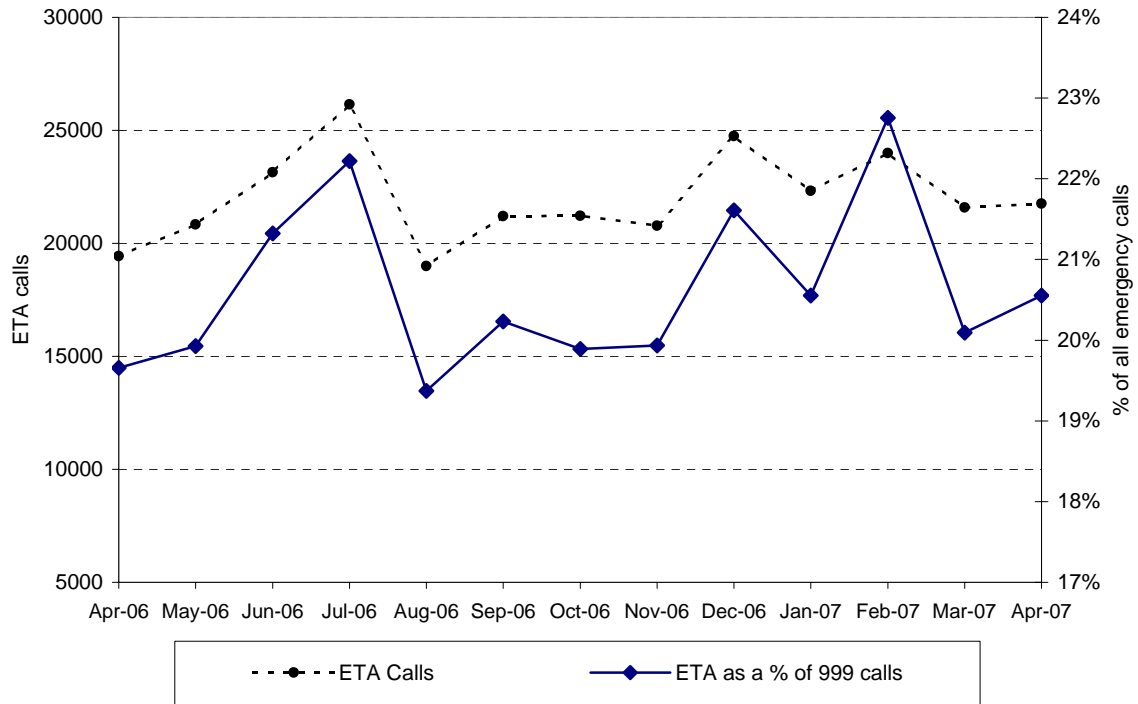


**London Ambulance Service NHS Trust
Accident and Emergency Service
EOC activity and staffing**

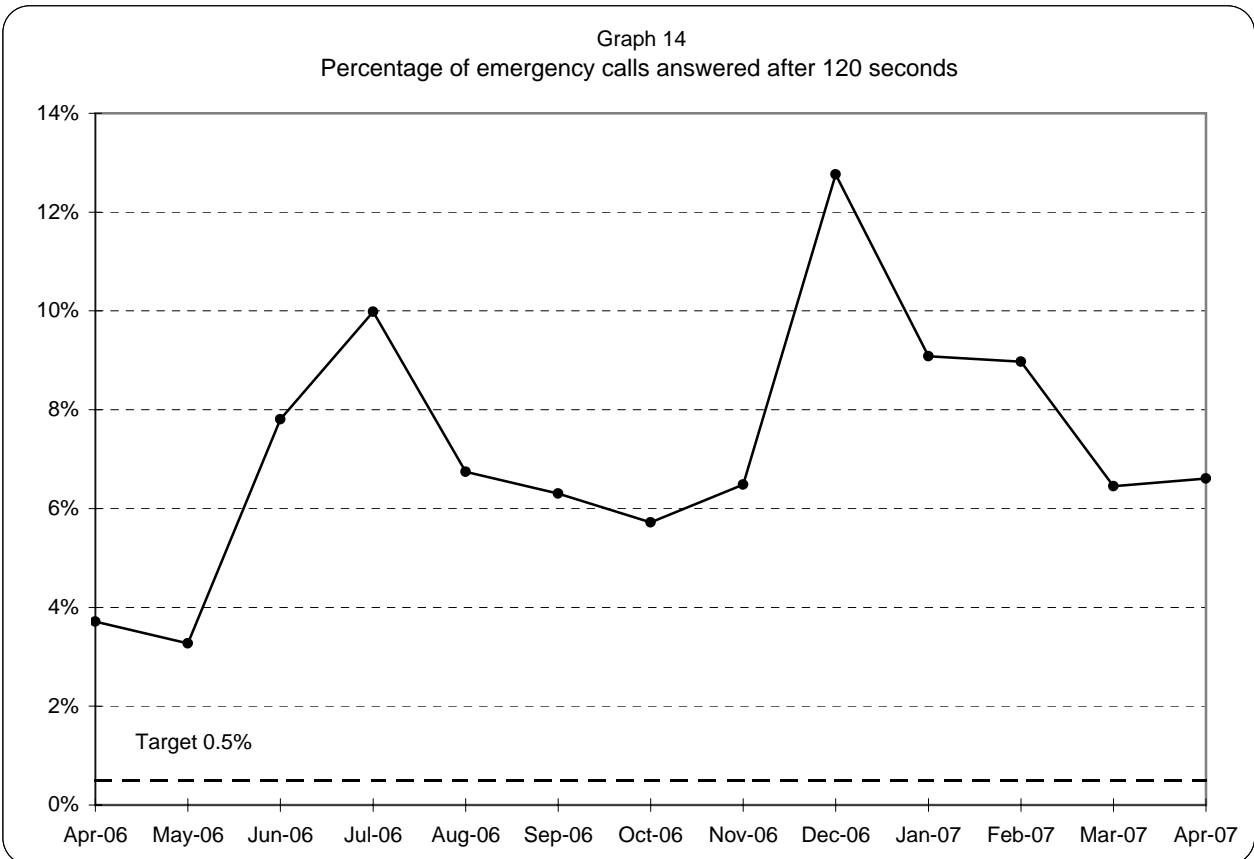
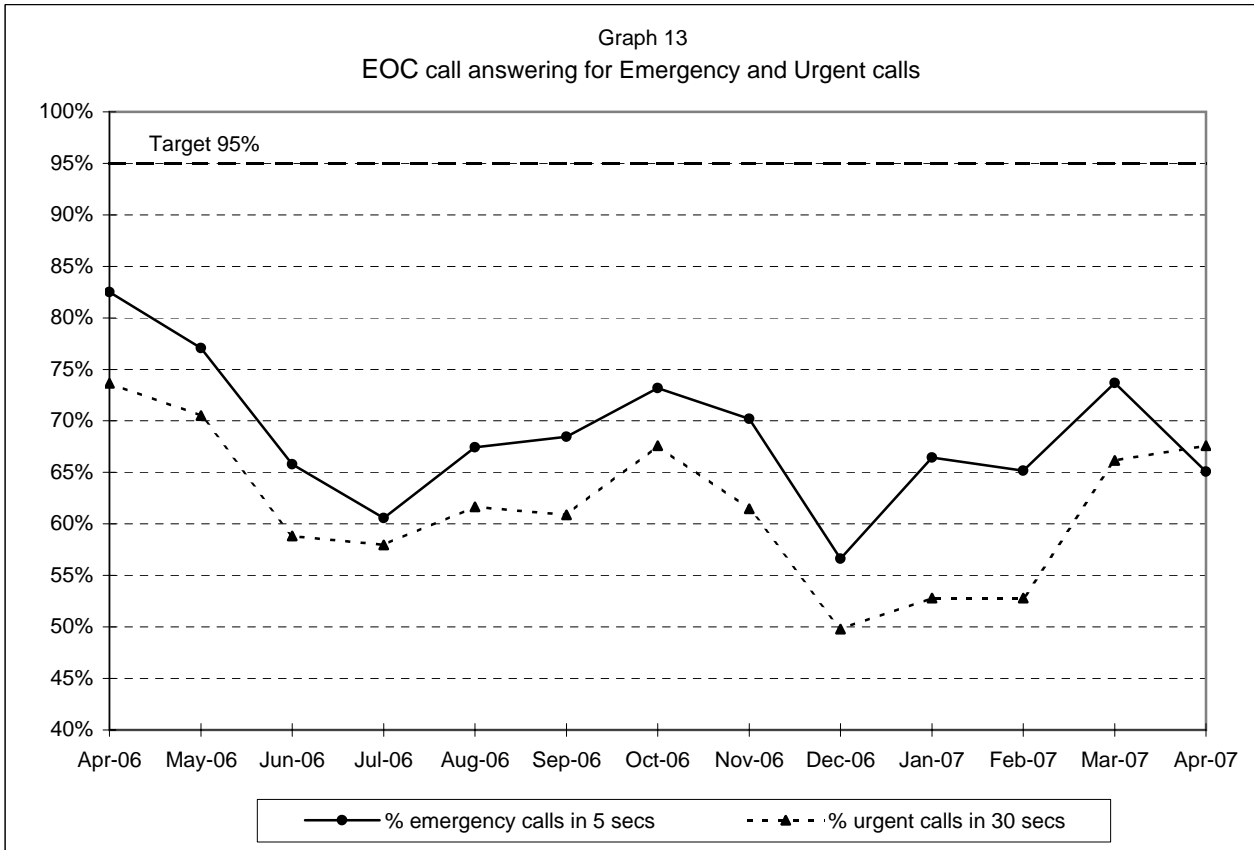


**London Ambulance Service NHS Trust
Accident and Emergency Service
ETA calls as a percentage of all emergency calls**

Graph 12
ETA calls as a percentage of all emergency calls



**London Ambulance Service NHS Trust
Accident and Emergency Service
EOC call answering performance**



Note: 95% target applies to both Emergency and Urgent call answering

**London Ambulance Service NHS Trust
Accident and Emergency Service
Urgent Care Service workload**

Table 1: Workload by UCS crews, for Green, Urgent, Non Urgent and CTA

Crew type	Feb-07	Mar-07	Apr-07
EMT 1	976	1086	1463
Whitework	1077	1113	997
PTS	266	173	139
ECP	279	287	313
CTA	3642	4527	4018
UCS Total (green, urgent, non urgent & CTA)	6240	7186	6930
Non UCS Total (green, urgent, non urgent)	12544	14818	14331
TOTAL	18784	22004	21261
% of total by UCS	33.2%	32.7%	32.6%

* Workload here refers to all arrivals on scene and will therefore include multiple responses to an incident (except for CTA, which refers to all calls passed to CTA)

London Ambulance Service NHS Trust
Accident and Emergency Service
Category A activity and performance by Primary Care Trust

Table 2

		Feb-07			Mar-07			Apr-07		
		Cat A resp	Cat A in 8	% cat A resp in 8 mins	Cat A resp	Cat A in 8	% cat A resp in 8 mins	Cat A resp	Cat A in 8	% cat A resp in 8 mins
5K5	Brent PCT	1,006	726	72%	940	752	80%	852	650	76%
5HX	Ealing PCT	1,188	763	64%	1,155	861	75%	982	721	73%
5H1	Hammersmith & Fulham PCT	579	458	79%	617	519	84%	563	455	81%
5K6	Harrow PCT	629	479	76%	646	543	84%	552	470	85%
5AT	Hillingdon PCT	1,001	719	72%	1,003	807	80%	864	640	74%
5HY	Hounslow PCT	798	529	66%	791	597	75%	676	516	76%
5LA	Kensington & Chelsea PCT	499	380	76%	442	369	83%	419	341	81%
5LC	Westminster PCT	1,138	898	79%	1,171	1,014	87%	1,048	841	80%
North West London Strategic HA		6,838	4,952	72%	6,765	5,462	81%	5,956	4,634	78%
5A9	Barnet PCT	967	665	69%	1,000	757	76%	864	636	74%
5K7	Camden PCT	869	730	84%	882	791	90%	786	695	88%
5C1	Enfield PCT	994	733	74%	994	812	82%	955	761	80%
5C9	Haringey PCT	888	627	71%	901	711	79%	855	636	74%
5K8	Islington PCT	729	571	78%	853	703	82%	702	576	82%
North Central London Strategic HA		4,447	3,326	75%	4,630	3,774	82%	4,162	3,304	79%
5C2	Barking & Dagenham PCT	764	490	64%	723	559	77%	649	494	76%
5C3	City & Hackney PCT	1,026	684	67%	1,099	874	80%	891	654	73%
5A4	Havering PCT	686	469	68%	731	550	75%	657	465	71%
5C5	Newham PCT	1,054	725	69%	1,039	815	78%	904	681	75%
5NA	Redbridge PCT	769	485	63%	815	655	80%	719	527	73%
5C4	Tower Hamlets PCT	943	603	64%	930	717	77%	856	621	73%
5NC	Waltham Forest PCT	776	529	68%	780	604	77%	704	518	74%
North East London Strategic HA		6,018	3,985	66%	6,117	4,774	78%	5,380	3,960	74%
5AX	Bexley PCT	658	456	69%	688	535	78%	576	429	74%
5A7	Bromley PCT	765	542	71%	868	695	80%	755	530	70%
5A8	Greenwich PCT	843	627	74%	850	700	82%	749	572	76%
5LD	Lambeth PCT	1,052	738	70%	1,093	864	79%	984	732	74%
5LF	Lewisham PCT	924	711	77%	976	789	81%	840	667	79%
5LE	Southwark PCT	1,103	844	77%	1,111	892	80%	1,072	819	76%
South East London Strategic HA		5,345	3,918	73%	5,586	4,475	80%	4,976	3,749	75%
5K9	Croydon PCT	1,116	768	69%	1,122	878	78%	1,060	763	72%
5A5	Kingston PCT	402	278	69%	446	348	78%	397	309	78%
5M6	Richmond & Twickenham PCT	449	298	66%	428	307	72%	388	292	75%
5M7	Sutton & Merton PCT	1,047	766	73%	1,051	798	76%	874	659	75%
5LG	Wandsworth PCT	802	573	71%	806	637	79%	768	576	75%
South West London Strategic HA		3,816	2,683	70%	3,853	2,968	77%	3,487	2,599	75%
	Lowest (excl out of London)			63%			72%			70%
	Highest (excl out of London)			84%			90%			88%
	Range			21%			18%			18%