



London Ambulance Service
NHS Trust

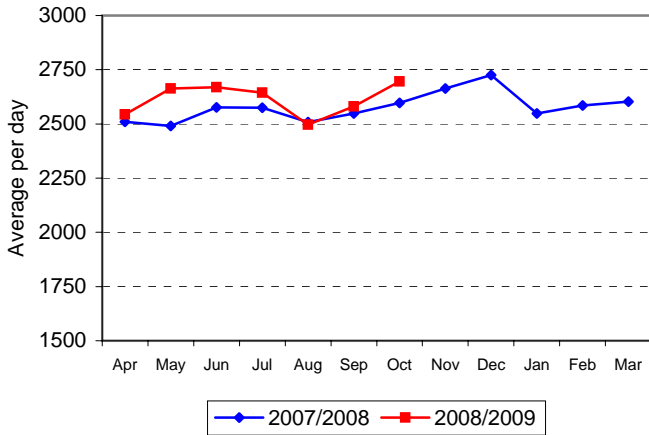
Information Pack for Trust Board

October 08

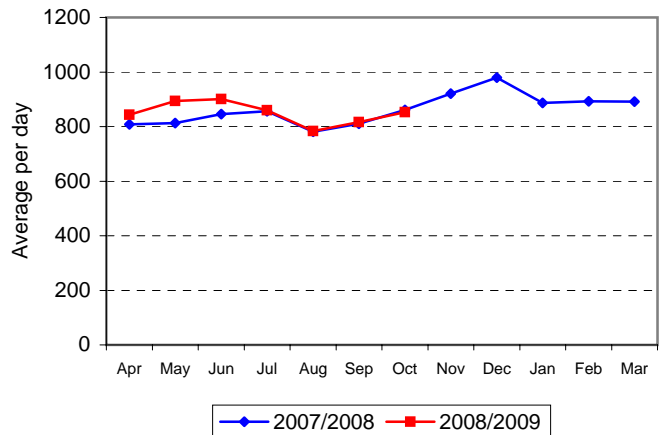
PRF data entry is not yet complete for October
Still awaiting staffing figures from Gareth Hughes

**London Ambulance Service NHS Trust
Accident and Emergency Service
Activity - October 2008**

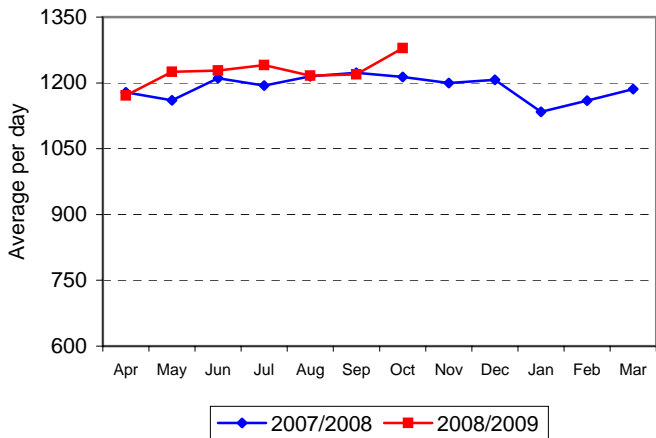
Graph 1
Average number of Cat A, B & C incidents per day



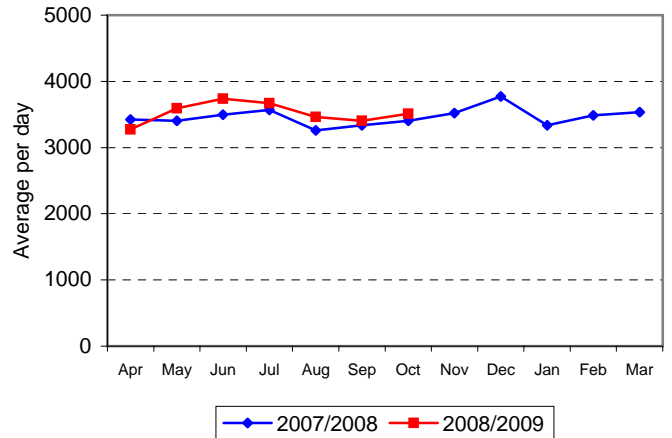
Graph 2
Average number of Cat A incidents per day



Graph 3
Average number of Cat B incidents per day

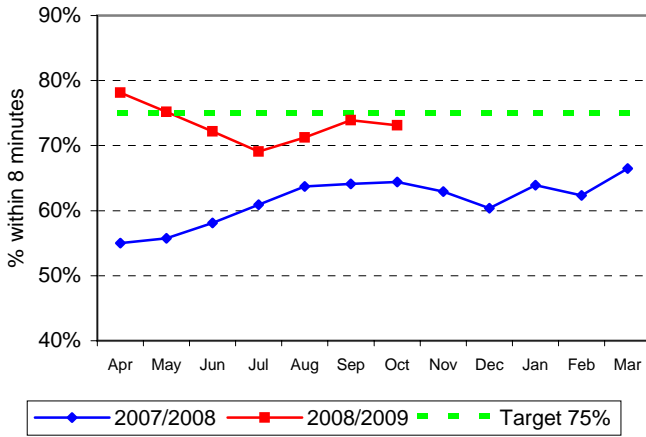


Graph 4
Average number of 999 calls received per day

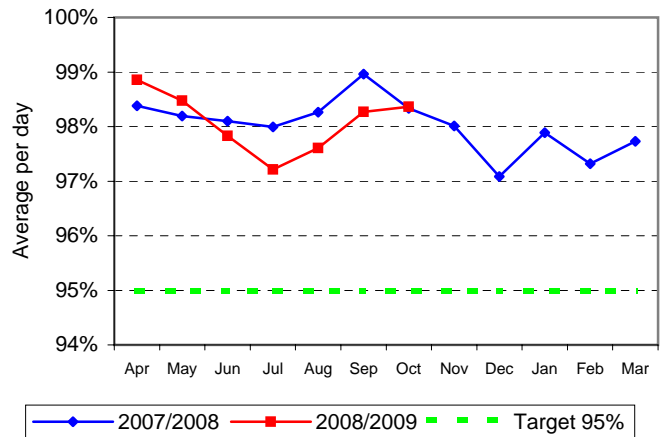


**London Ambulance Service NHS Trust
Accident and Emergency Service
Performance - October 2008**

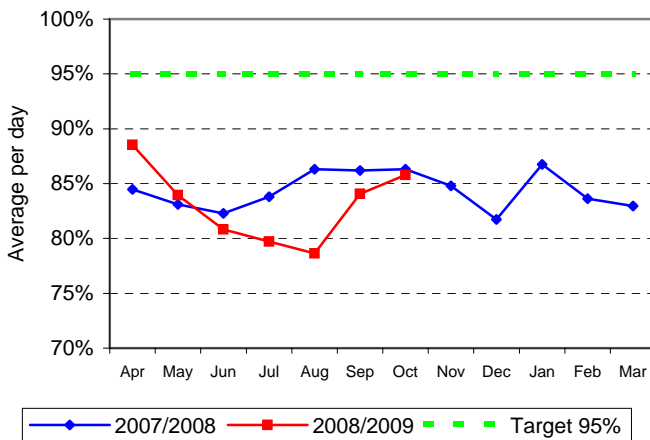
**Graph 5
Category A 8 minute performance**



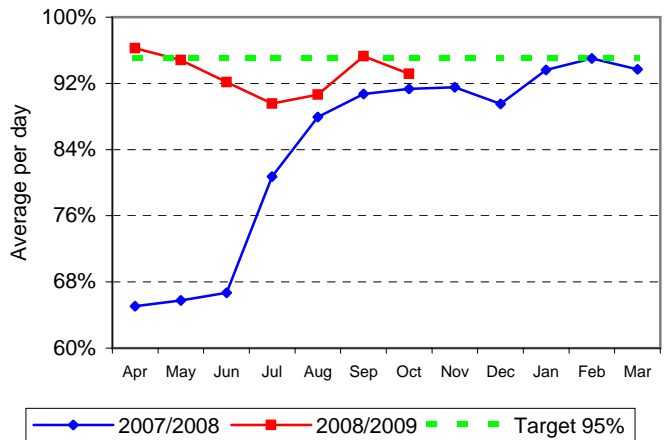
**Graph 6
Category A 19 minute performance**



**Graph 7
Category B 19 minute performance**

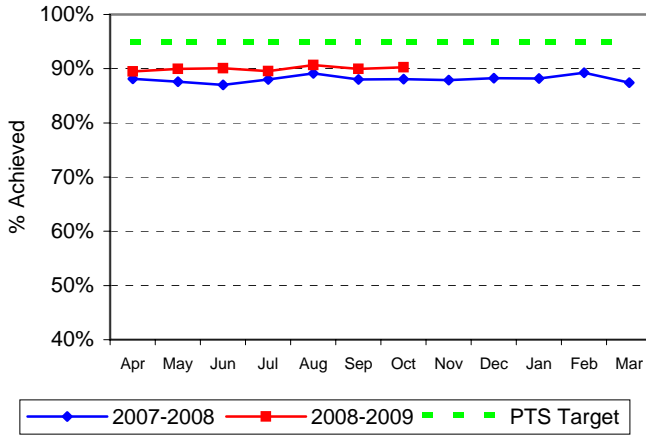


**Graph 8
Percentage of calls answered within 5 seconds**

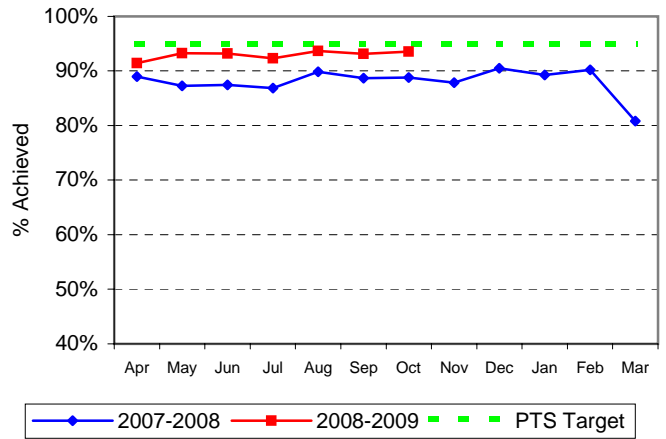


**London Ambulance Service NHS Trust
Patient Transport Service
Activity and Performance - October 2008**

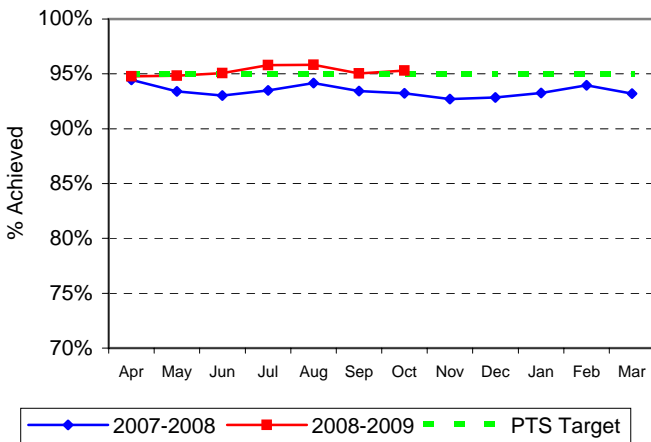
**Graph 9
Arrival at Hospital Against Appointment Time**



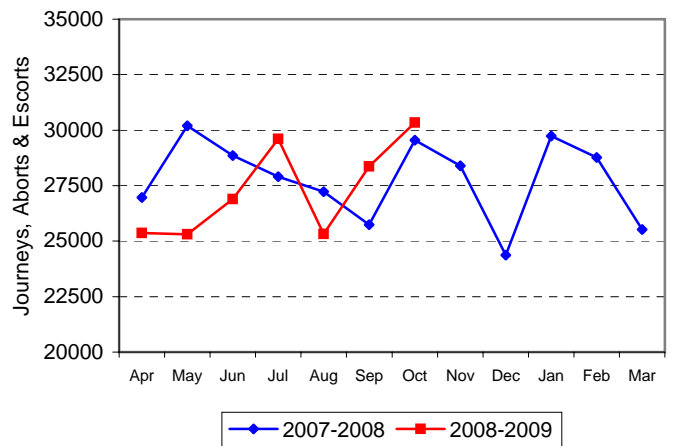
**Graph 10
Departure Against Ready Time**



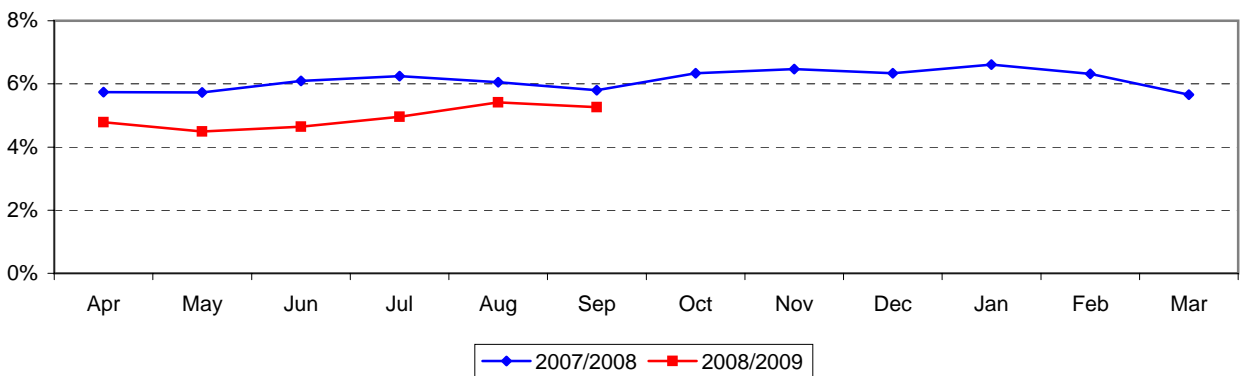
**Graph 11
Time spent on Vehicle**



**Graph 12
PTS Total Activity**

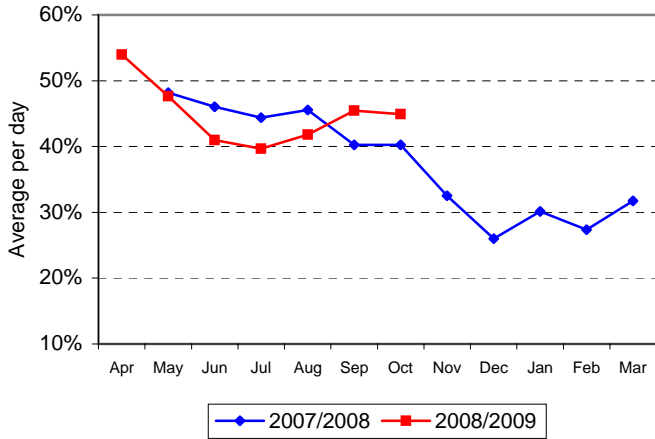


**Graph 13
Trust Sickness Levels**

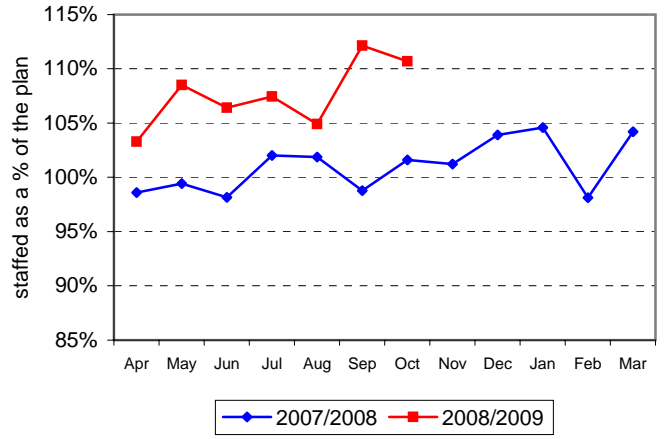


**London Ambulance Service NHS Trust
Accident and Emergency Service
Resourcing and Rest Breaks - October 2008**

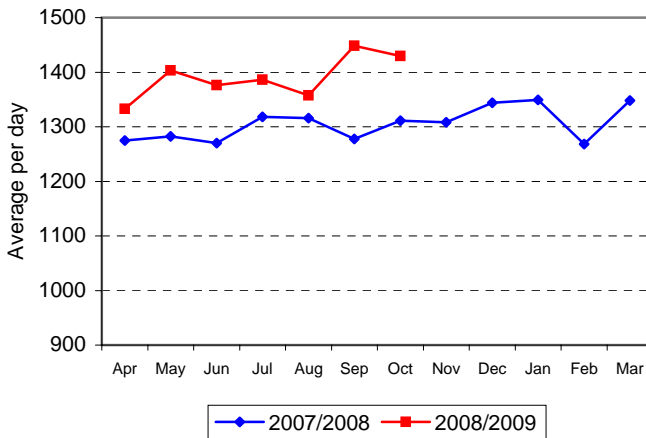
Graph 14
% of vehicles given a rest breaks



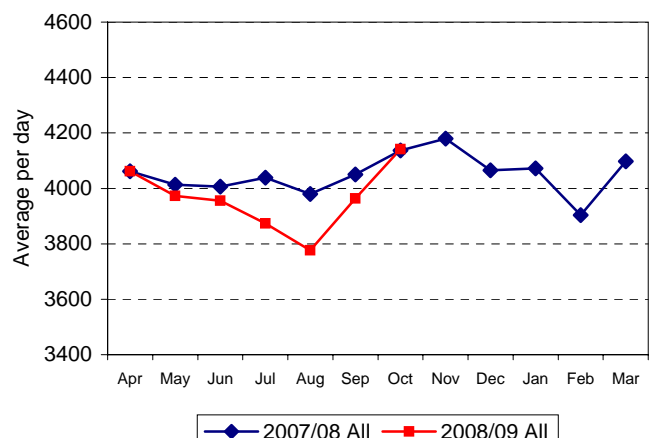
Graph 15
EOC Staffing as a % of the plan



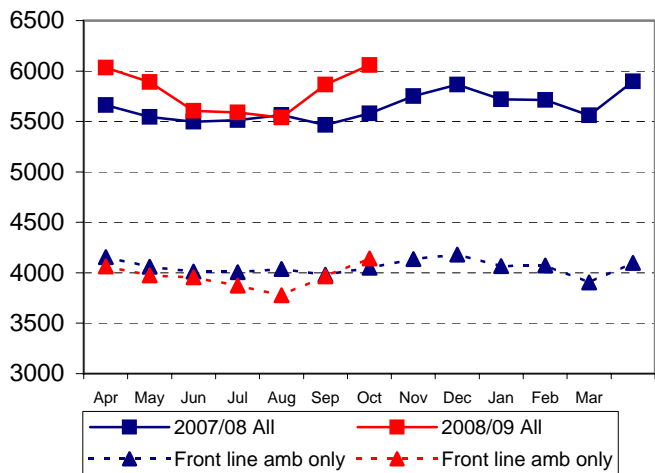
Graph 16
EOC hours staffed per day



Graph 17
Ambulance hours per day (now with VOR)



Graph 18
Hours staffed AEU + FRU per day (Avg 224hrs VOR)



Graph 19
Staffing as % of plan (Avg 54hrs VOR FRU)

